

Kuban State University

Hardware

Presentation by Ilyin Sergey

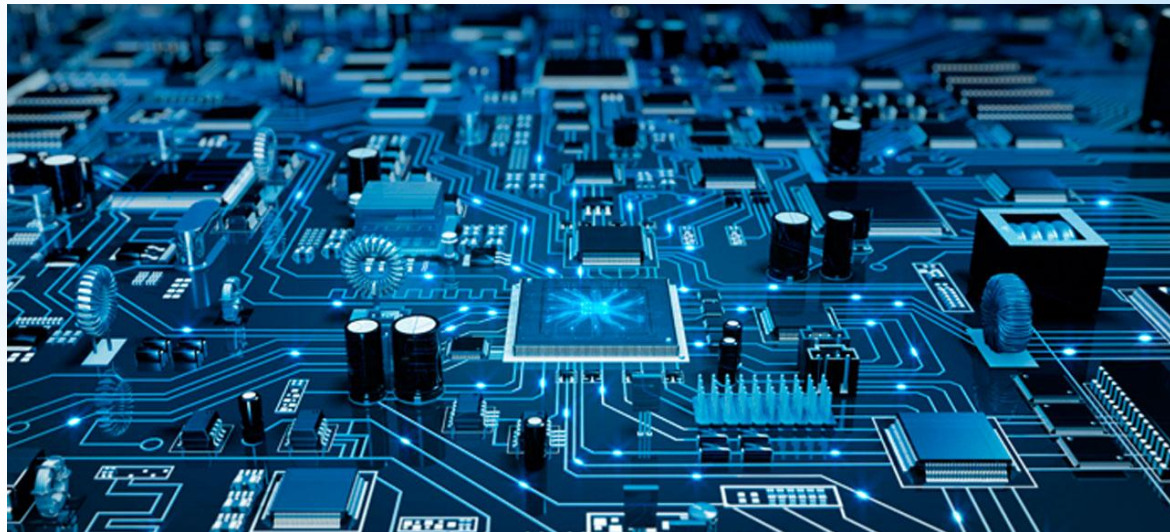
Group : ITiSS

Teacher: Kodrle Svetlana Vyacheslavovna

Krasnodar - 2018

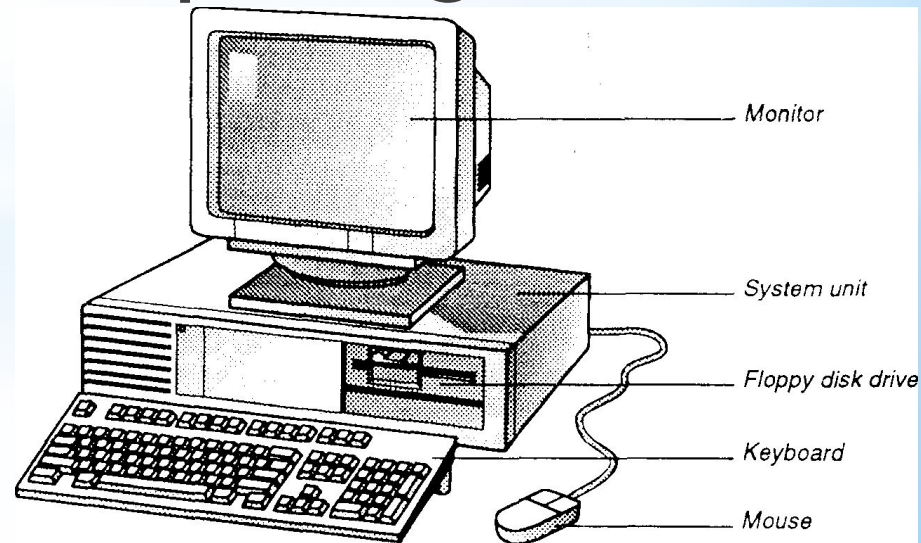
Plan of presentation

1. Definition of the hardware
2. Parts of the hardware:
 - a) Input hardware
 - b) Output hardware
 - c) Storage hardware
 - d) Processing hardware
3. Conclusion



Definition of hardware

Webster's dictionary gives us the following definition of the hardware - the mechanical, magnetic, electronic and electrical devices composing a computer system.



Input hardware

The purpose of the input hardware is to collect data and convert it into a form suitable for computer processing.



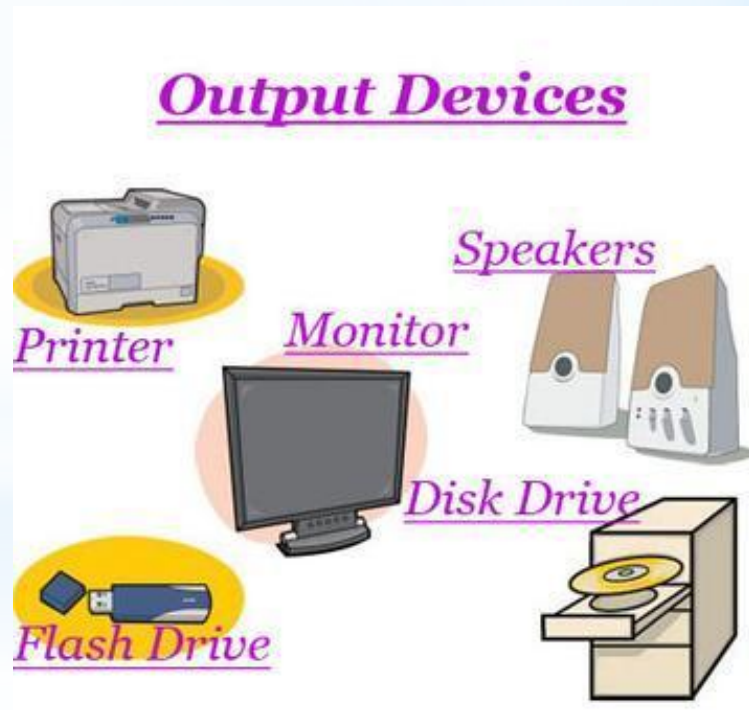
Input hardware consists of the following elements : light pen, typewriter, mouse, microphone , digital camera , etc .

The light pen uses a light sensitive photoelectric cell to signal screen position to the computer.



Output hardware

The purpose of output hardware is to provide the user with the means to view information produced by the computer system.



Output hardware consists of the following elements : printer, monitor, etc.

Printer is a computer output device that produces a paper copy of data or graphics.



Storage hardware

The purpose of storage hardware is to store computer instructions and data in a form that is relatively permanent.



Storage hardware consists of the following elements : Hard disk (HDD), floppy disk and CD - ROM.

CD - ROM is a compact disc on a which a large amount oof digitized read-only data can be stored.



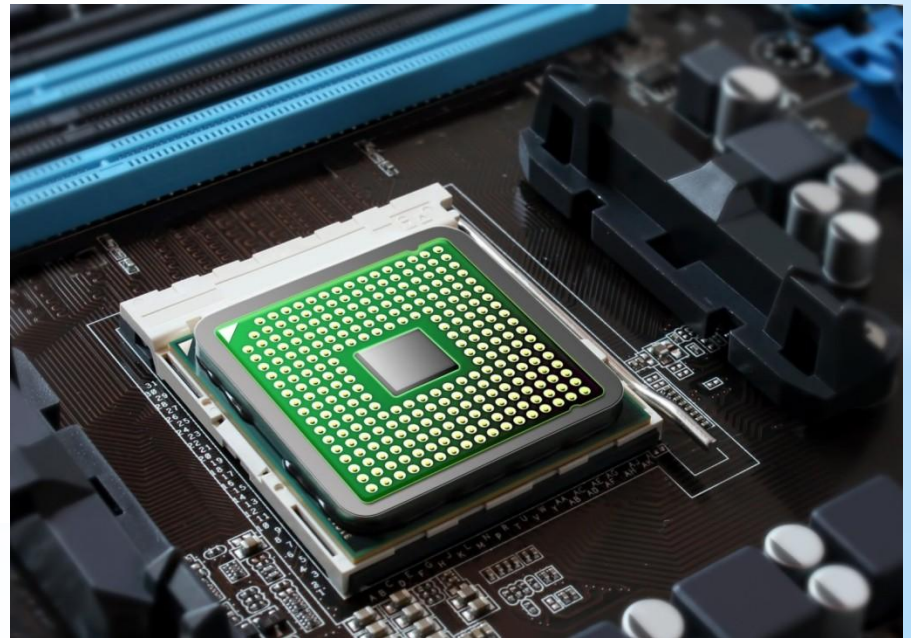
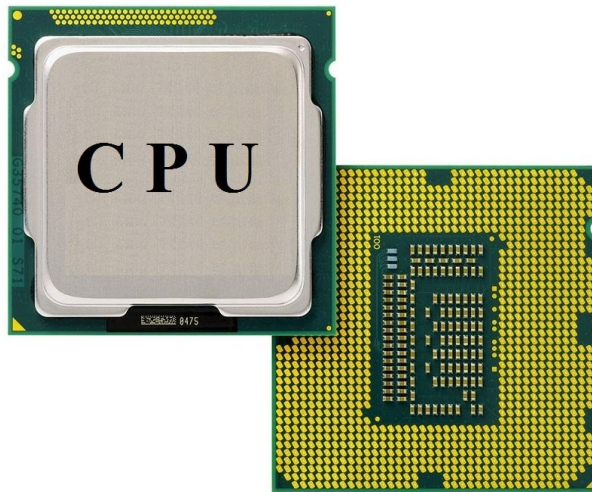
Processing hardware

The purpose of processing hardware is retrieve , interpret and direct the execution of software instructions provided to the computer.



Processing hardware consists of the following elements : Central Processing Unit (CPU), RAM , ROM .

CPU is the brain of the computer.



* Clearly, it was impossible to imagine life today without hardware because it remain of primary concern to most young people today.



**THANK YOU FOR YOUR
ATTENTION !**