

How to Make a Christmas Angel

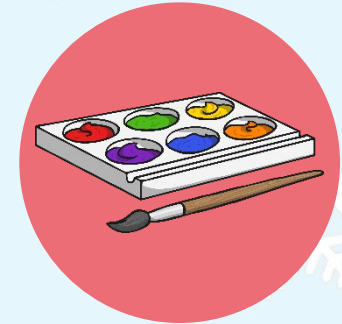
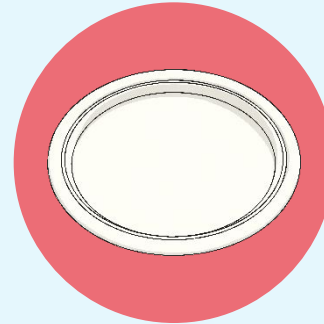
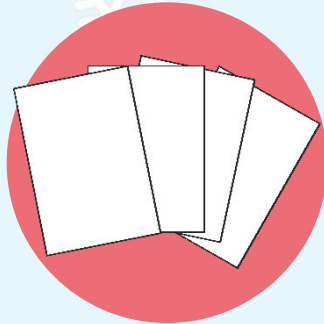


twinkl

How to Make a Christmas Angel

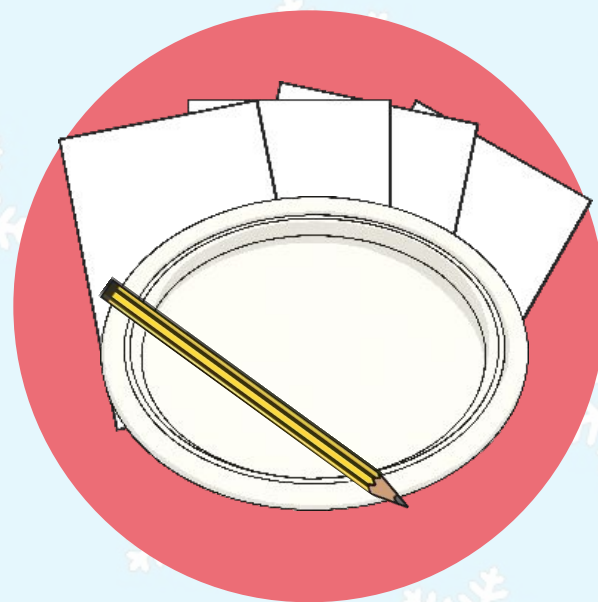
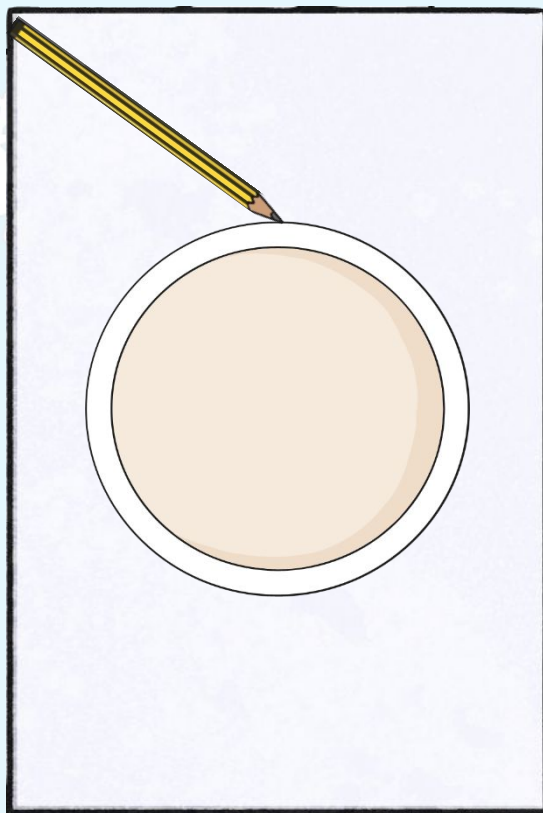
You Will Need:

- card
- saucer
- paint
- brushes
- muffin case
- glue and spreader
- scissors
- pencil
- wool
- glitter



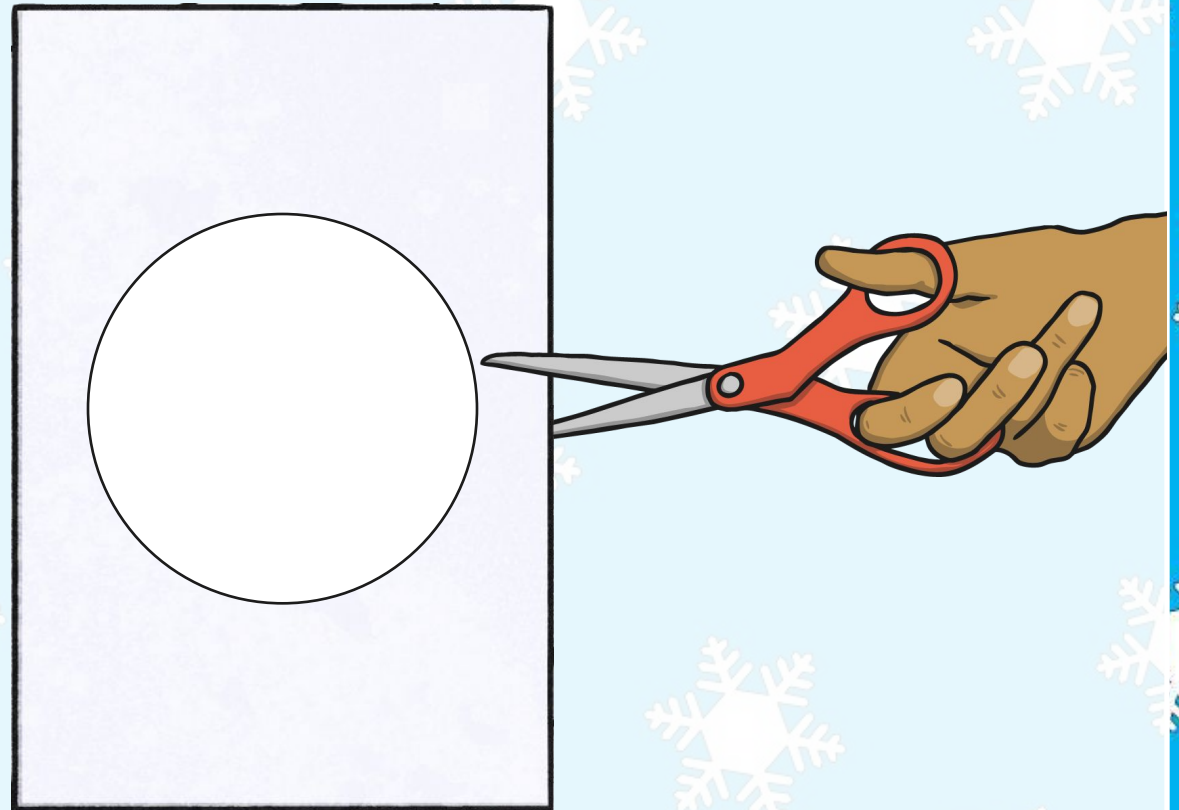
How to Make a Christmas Angel

Draw a circle onto a piece of card using the saucer as a guide.



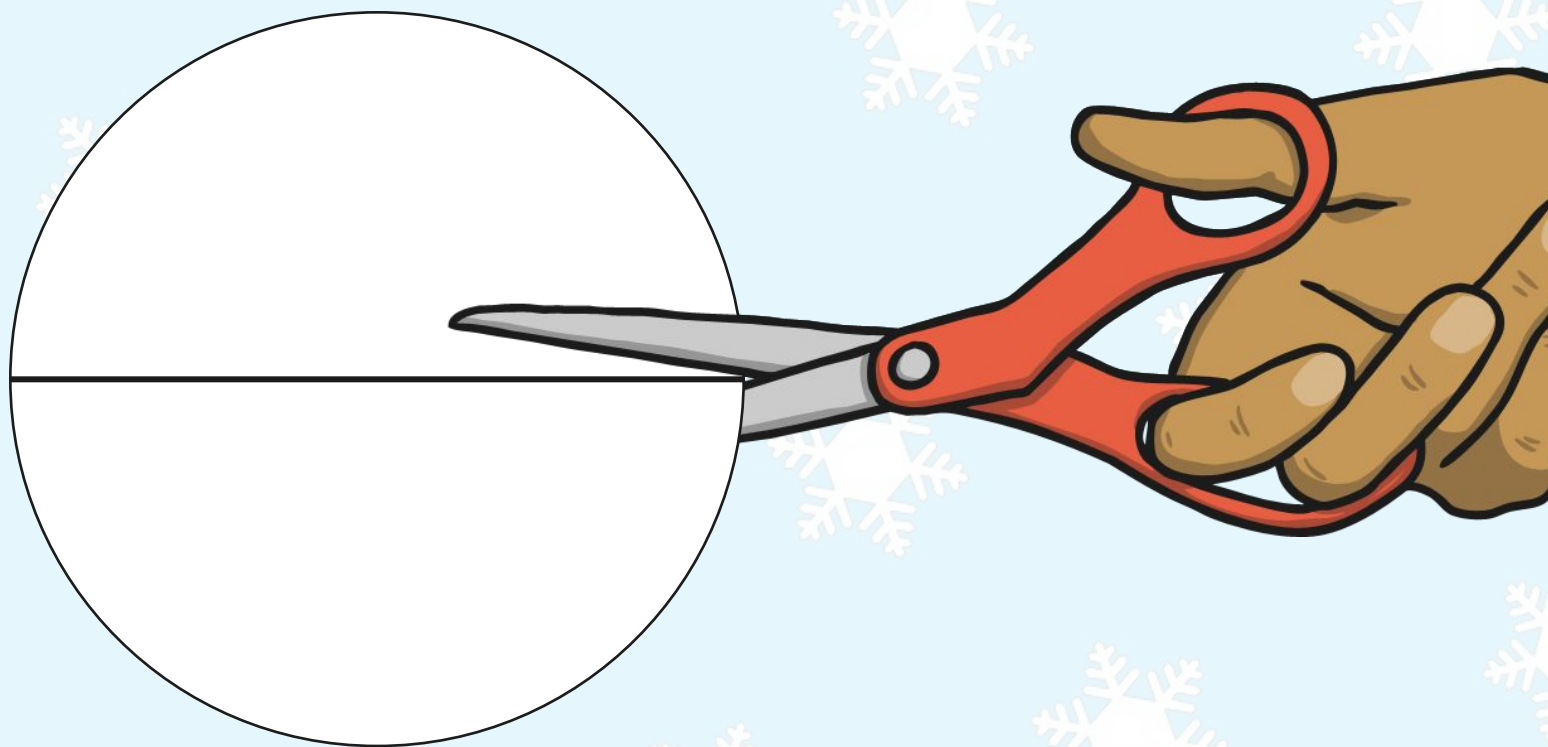
How to Make a Christmas Angel

Carefully cut out the circle with some scissors.



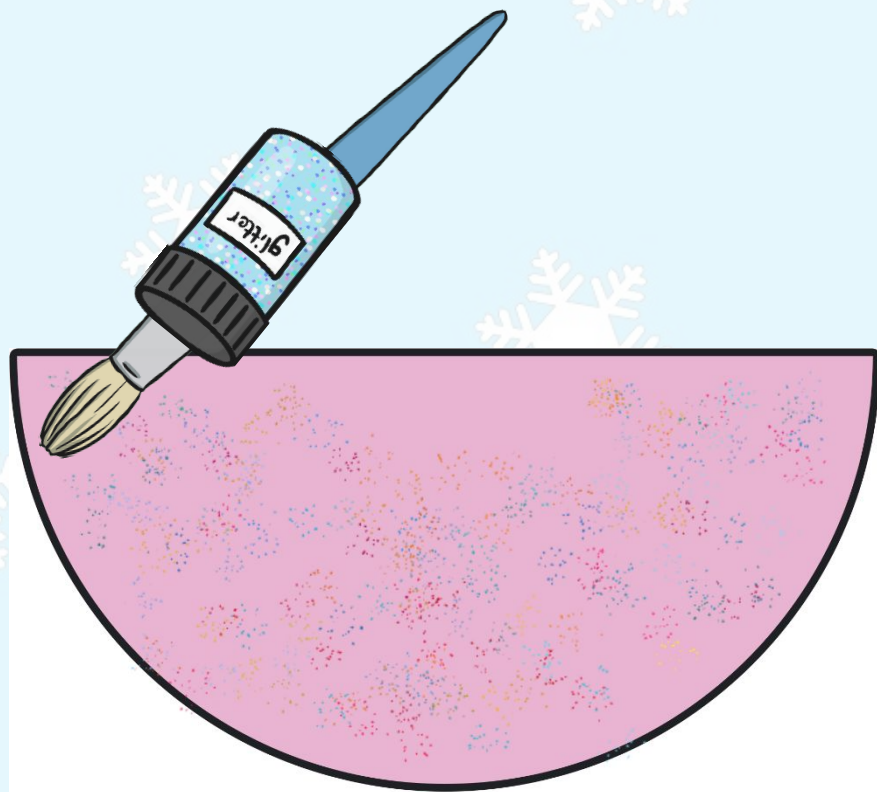
How to Make a Christmas Angel

Fold the circle in half and cut across the fold.



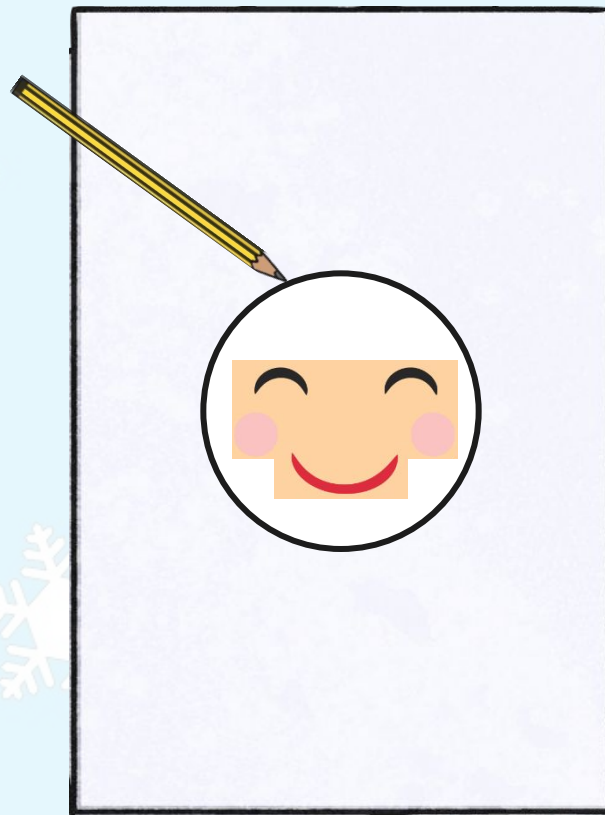
How to Make a Christmas Angel

Paint one of the semi-circles of card and sprinkle with glitter.



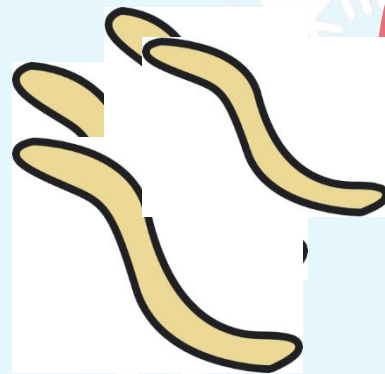
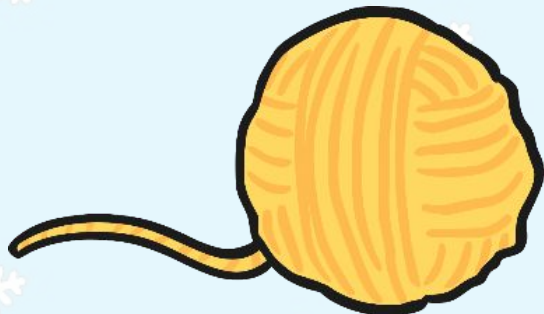
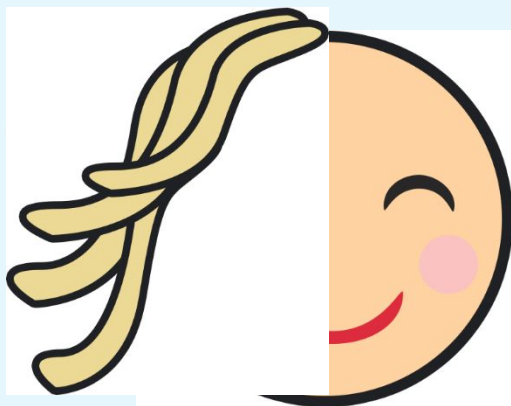
How to Make a Christmas Angel

Draw a face for your angel onto some card and cut it out.



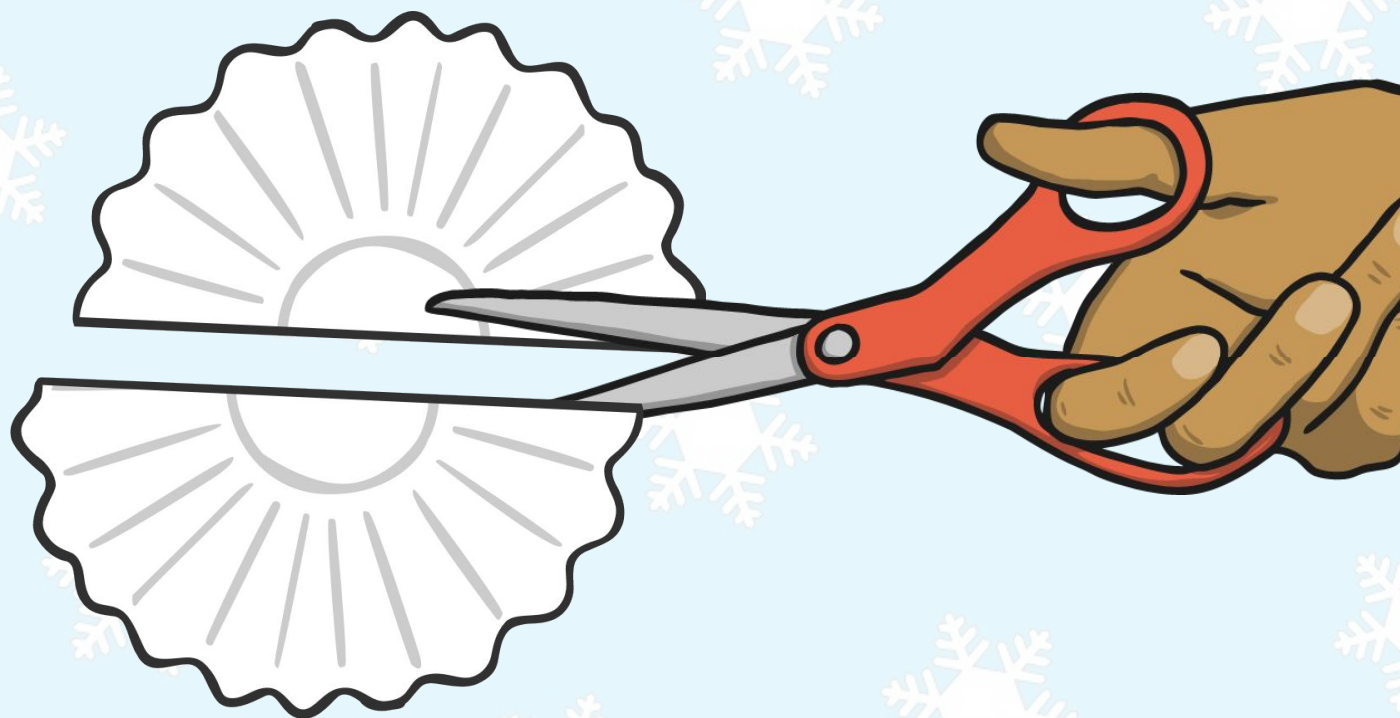
How to Make a Christmas Angel

Cut some pieces of wool for the hair and glue to the face.



How to Make a Christmas Angel

Cut the muffin case in half.



How to Make a Christmas Angel

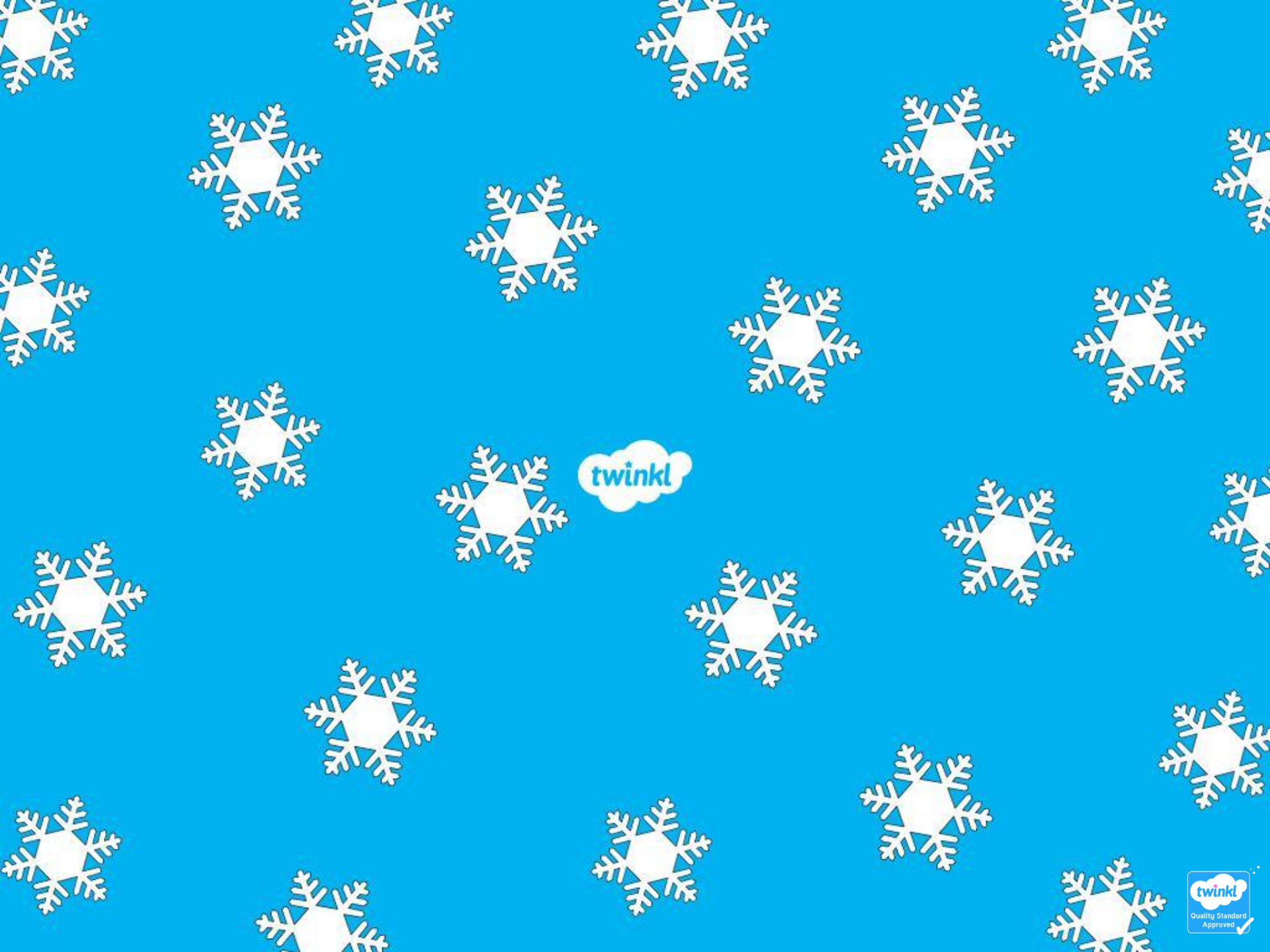
Glue the head and muffin case wings to the body.



How to Make a Christmas Angel

Attach a loop of wool to the back of the head.





twinkl