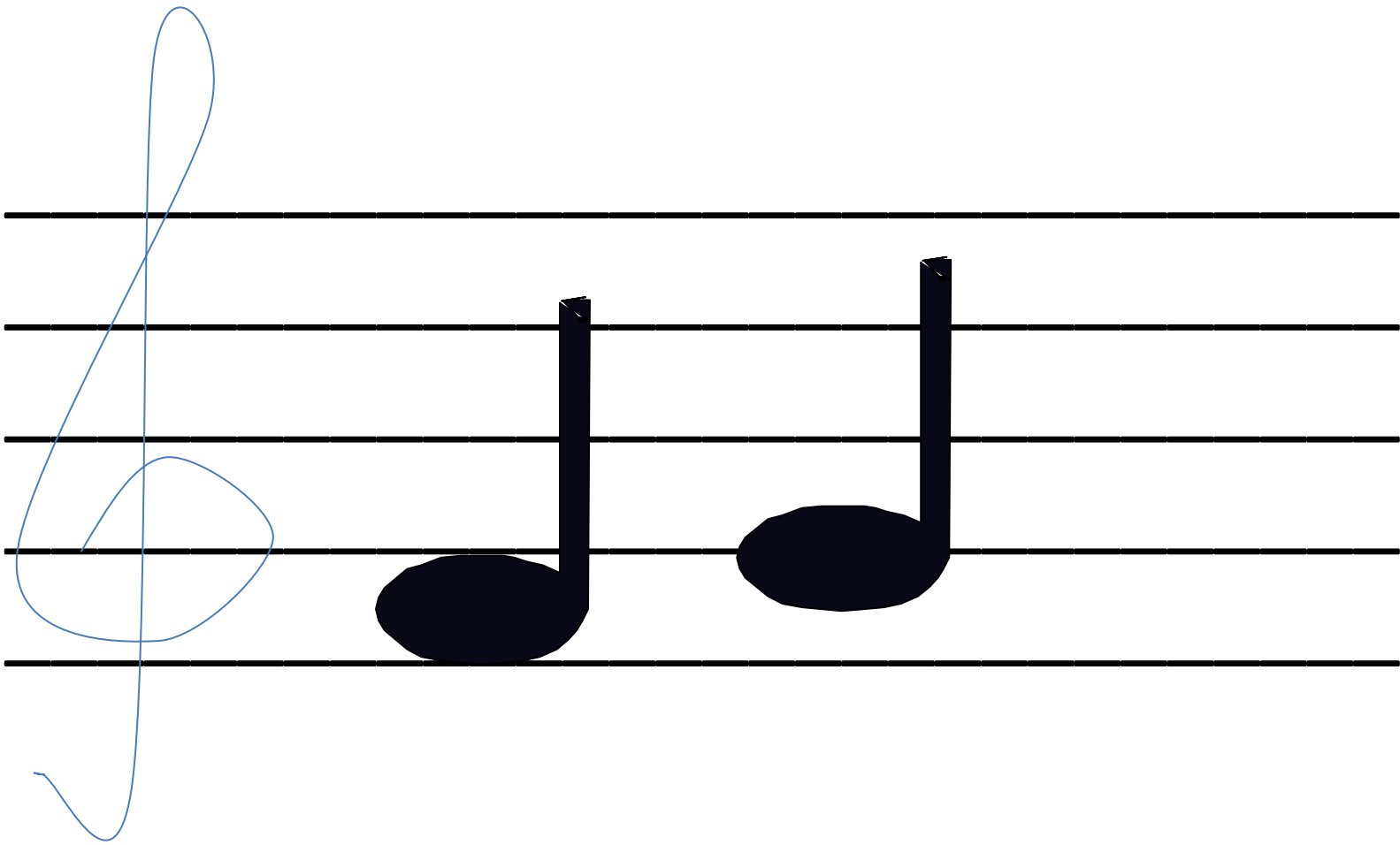
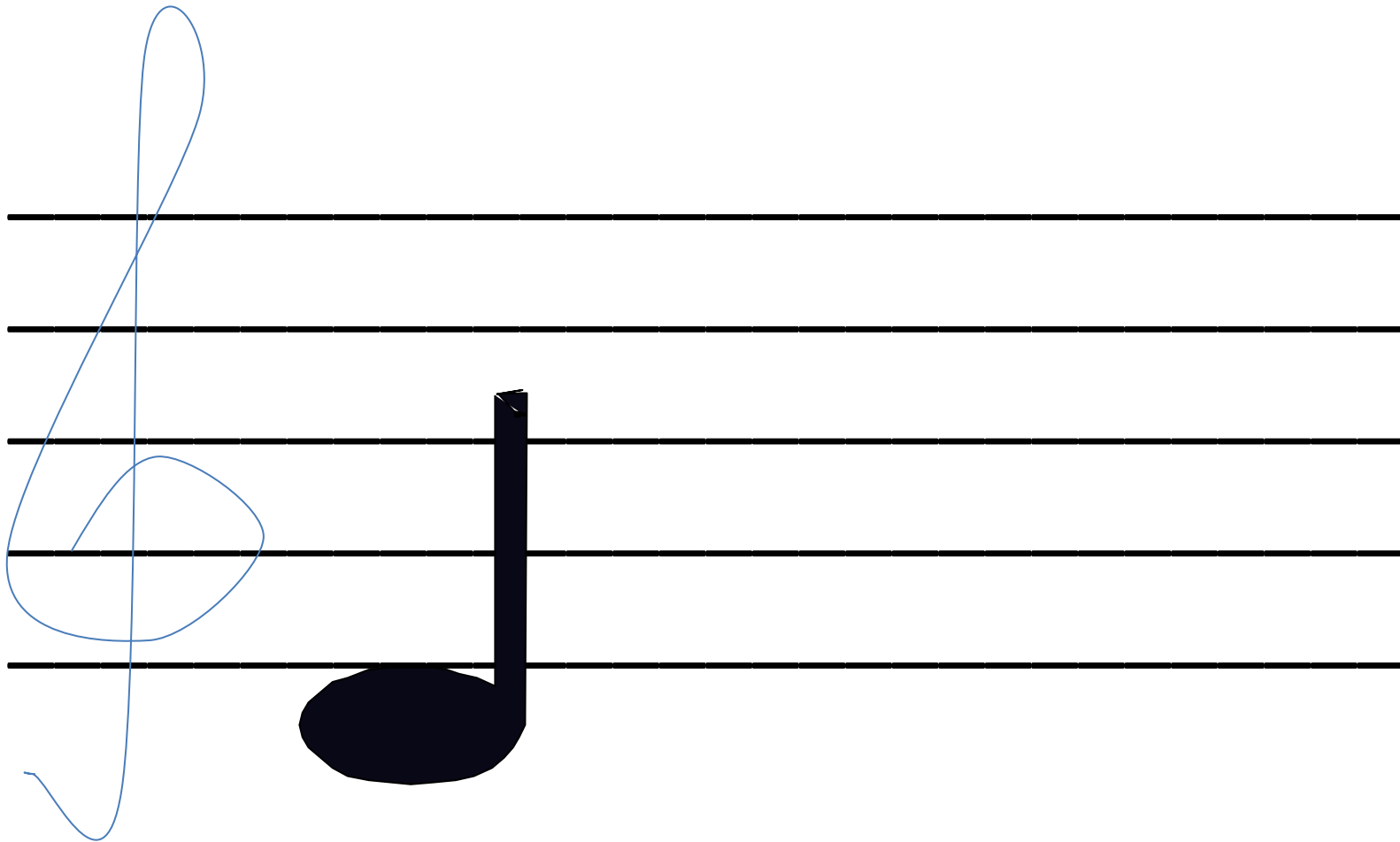


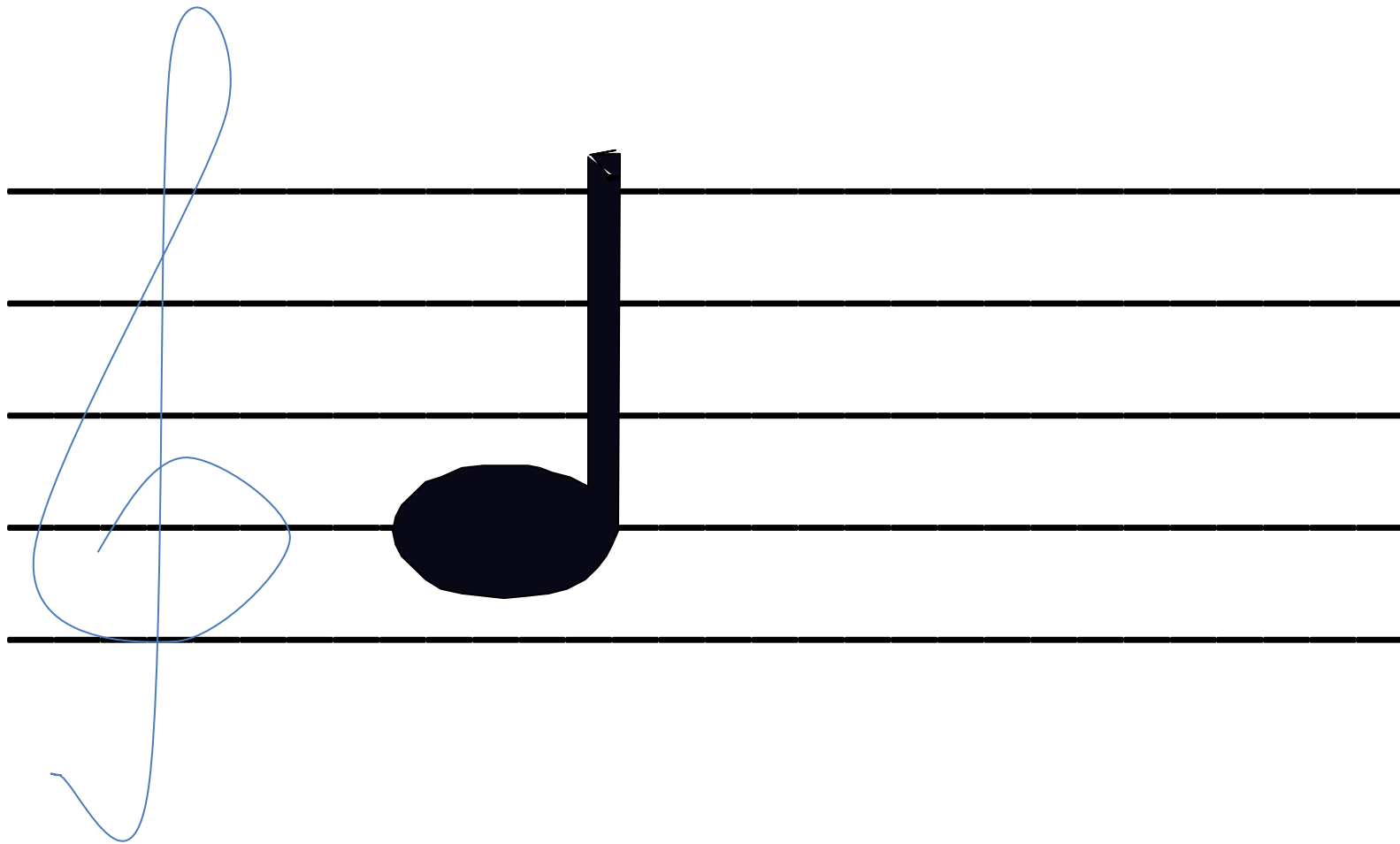
M

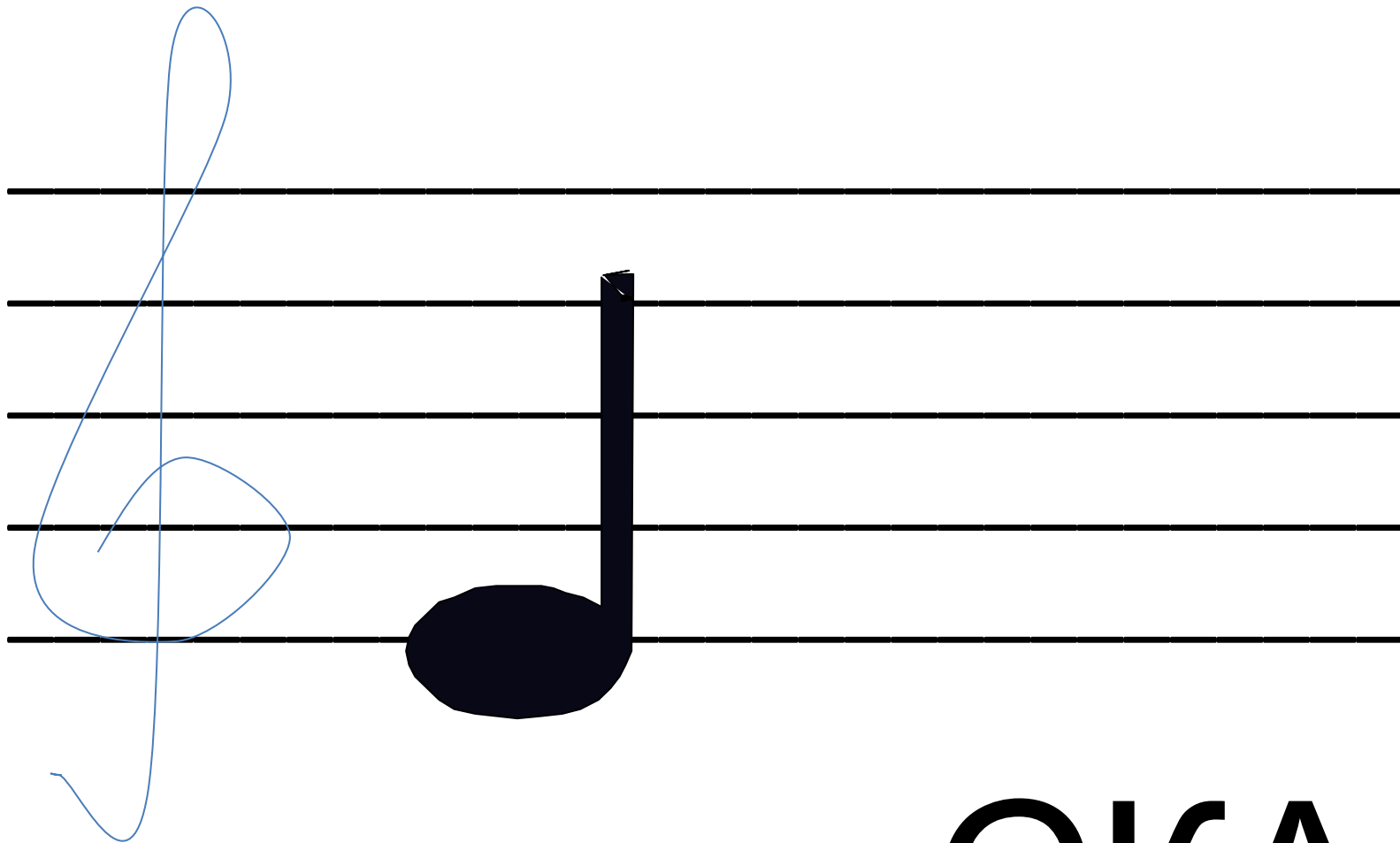




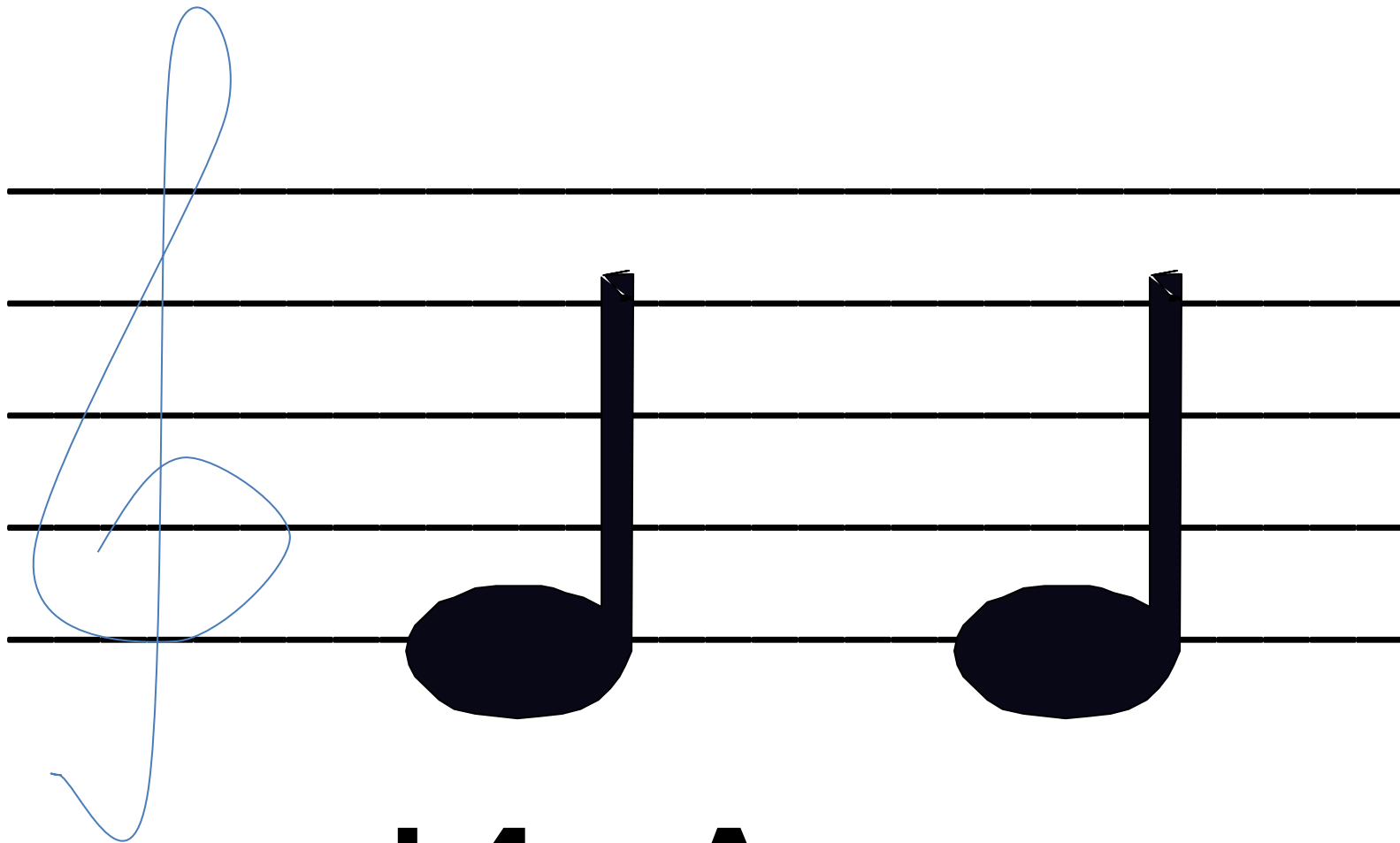
E = Ы

БА





CKA



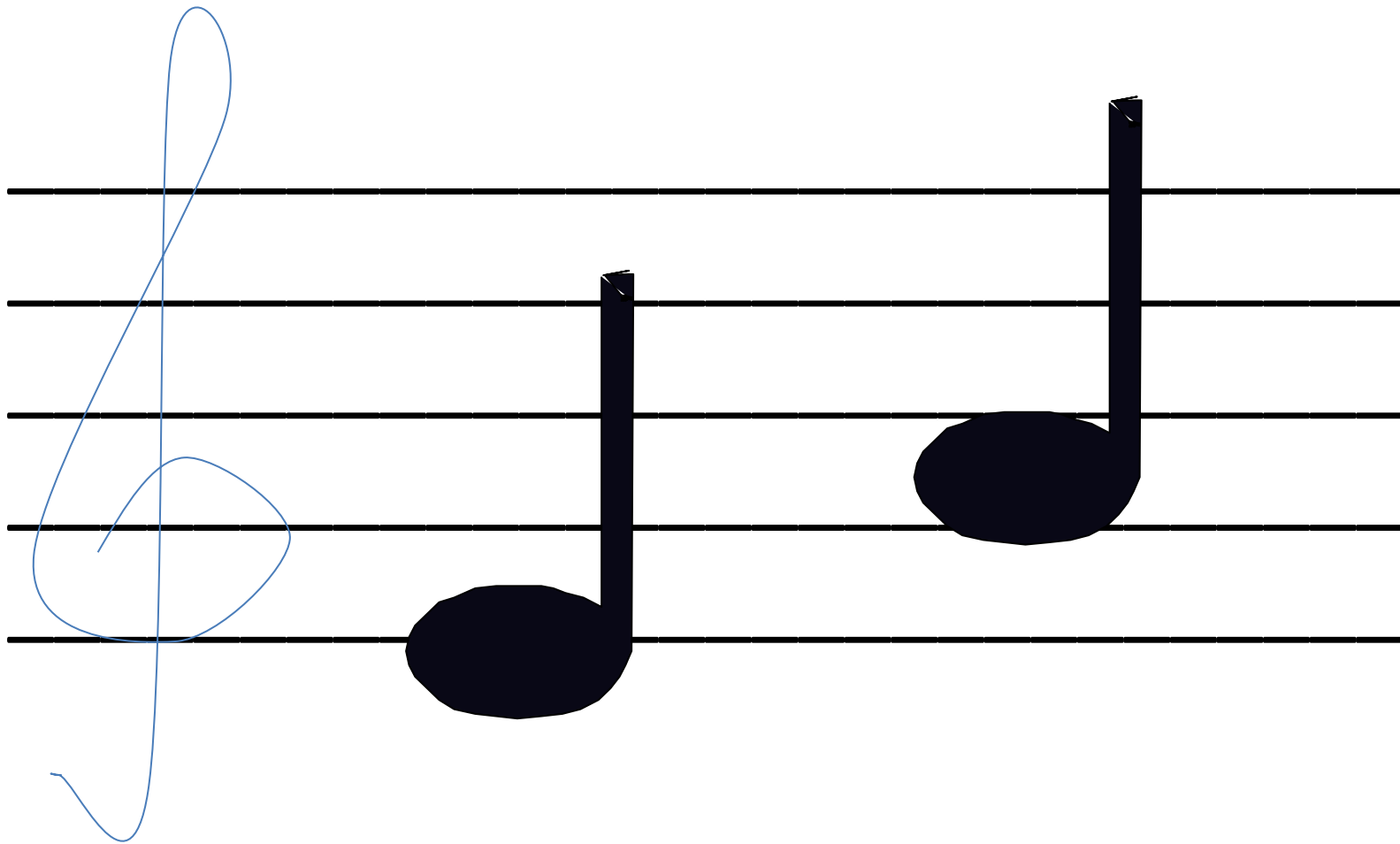
V=A

V=A



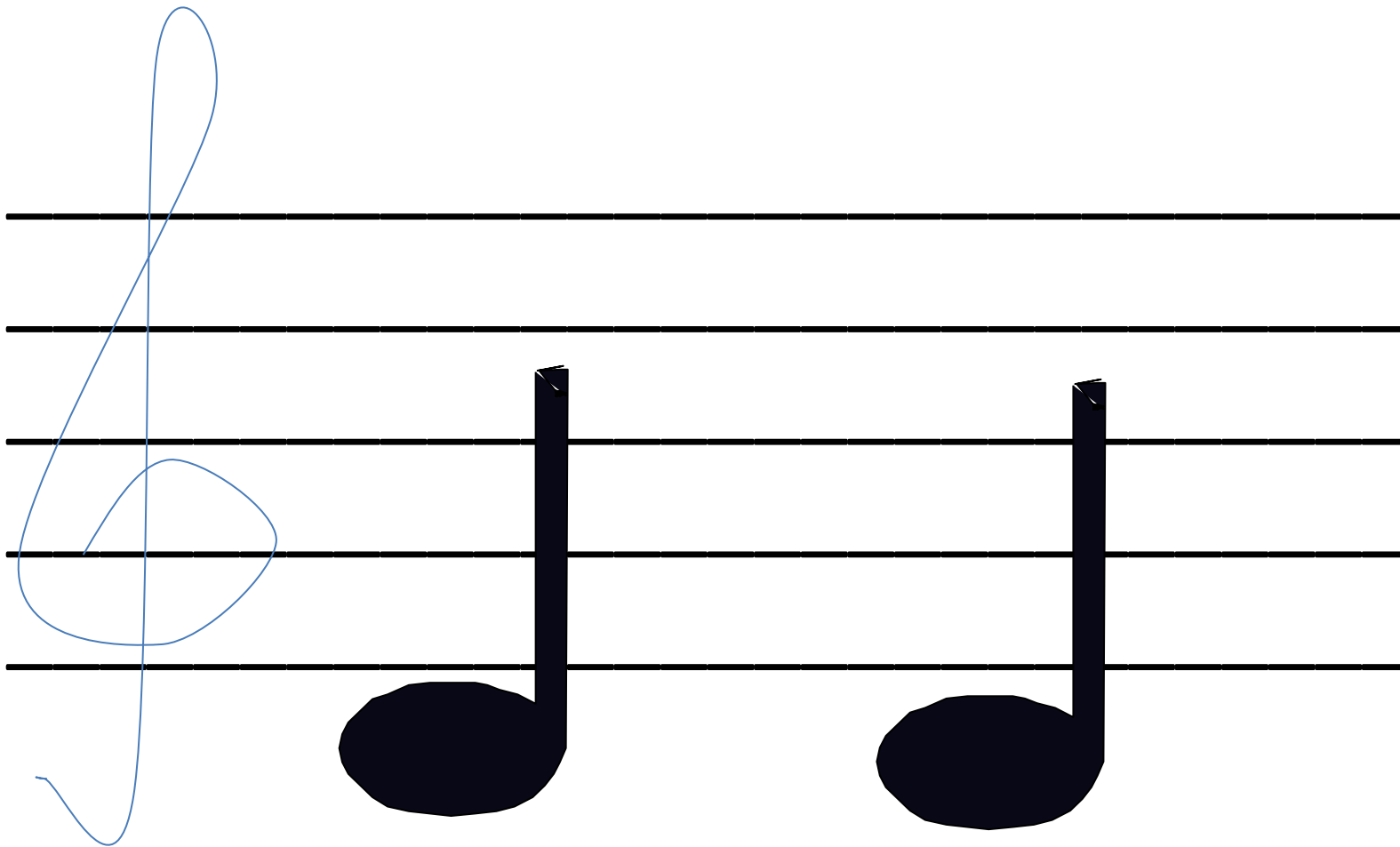
И=A ШИН

A



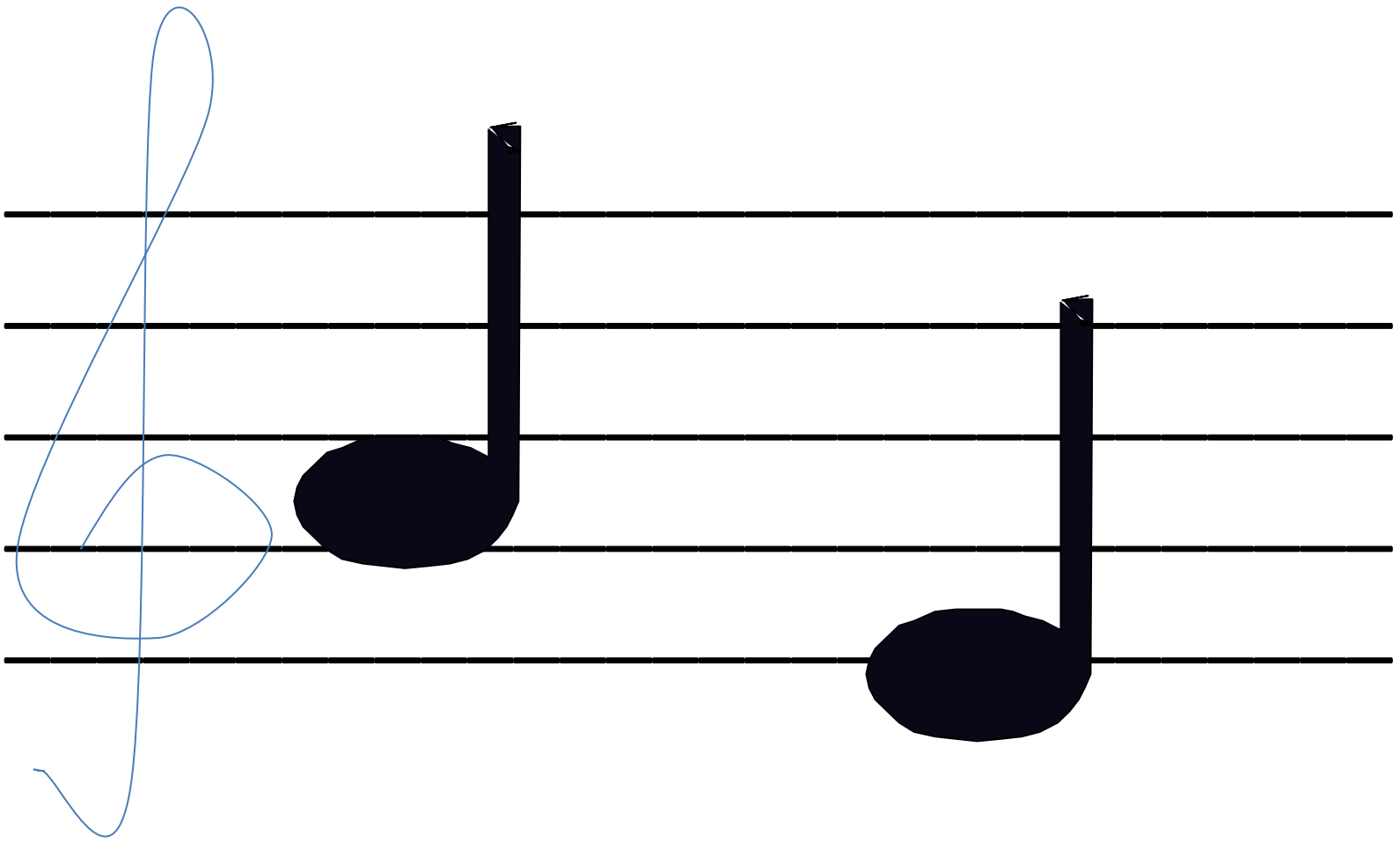


НИЦА



P=B

E=A



R=A

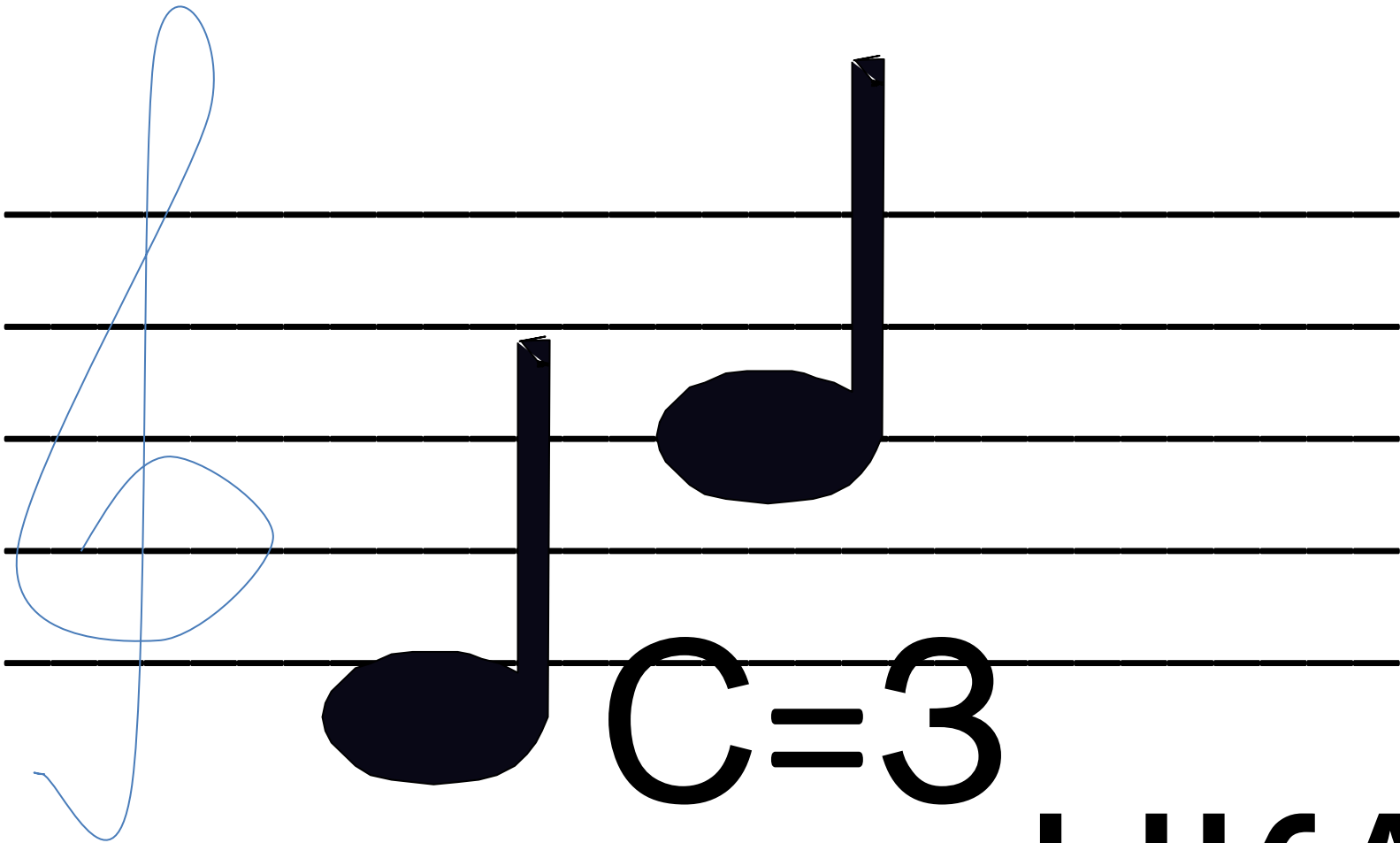
M=A



Я=И ЗА



Я=И ЗУН



HKA



Я=у

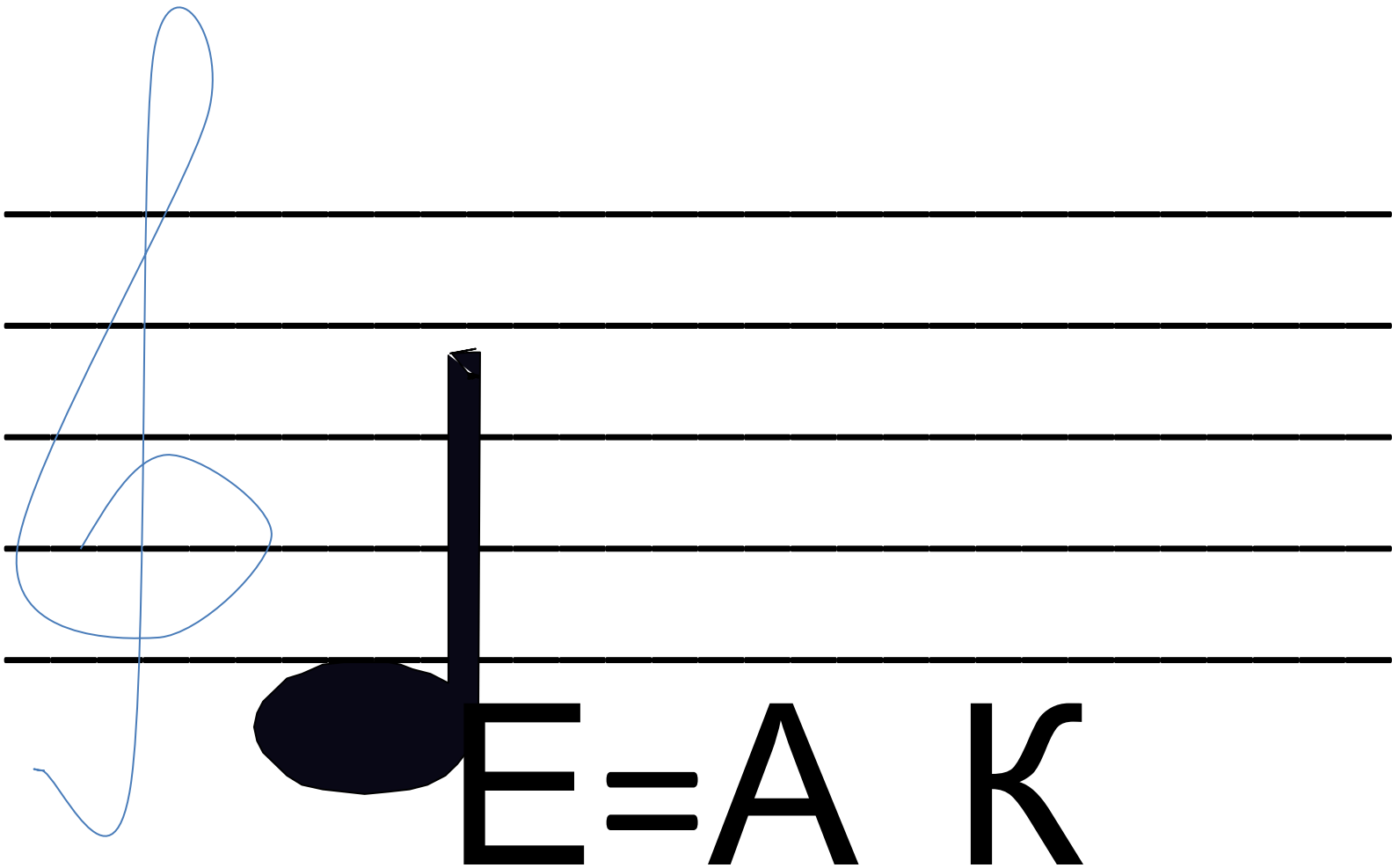
к



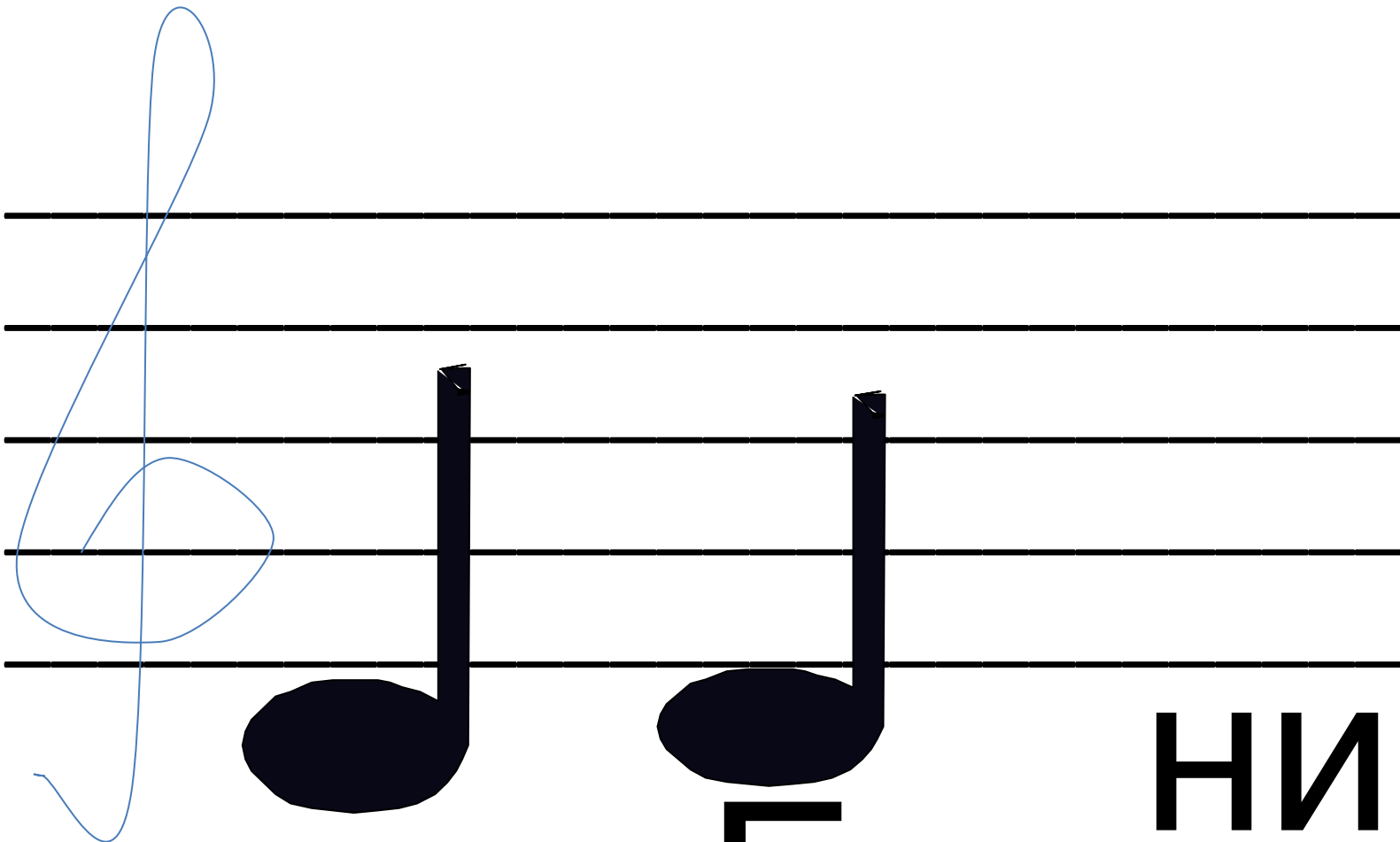
Я =

К

Ю



E=A K



Р =

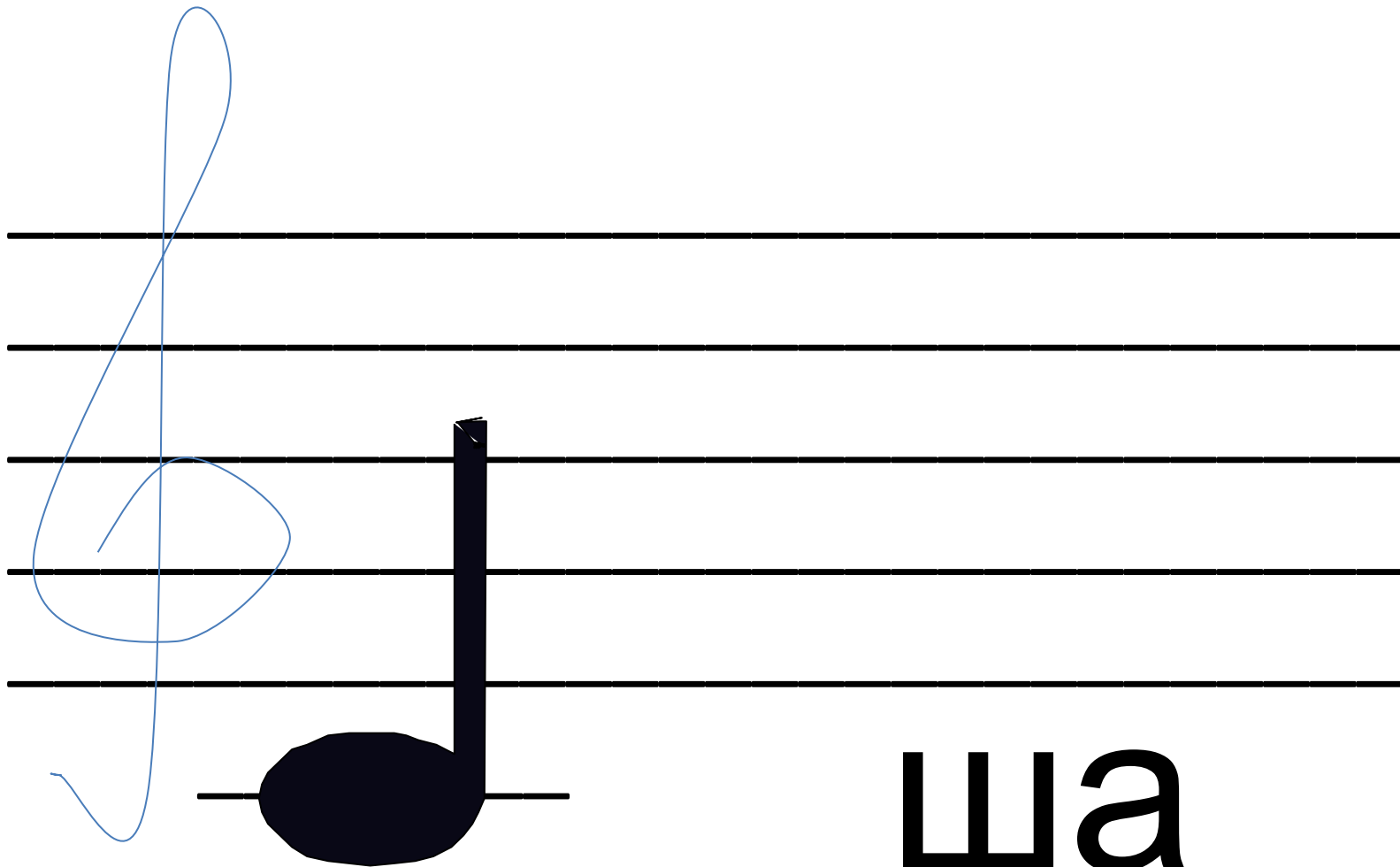
Е =

НИК

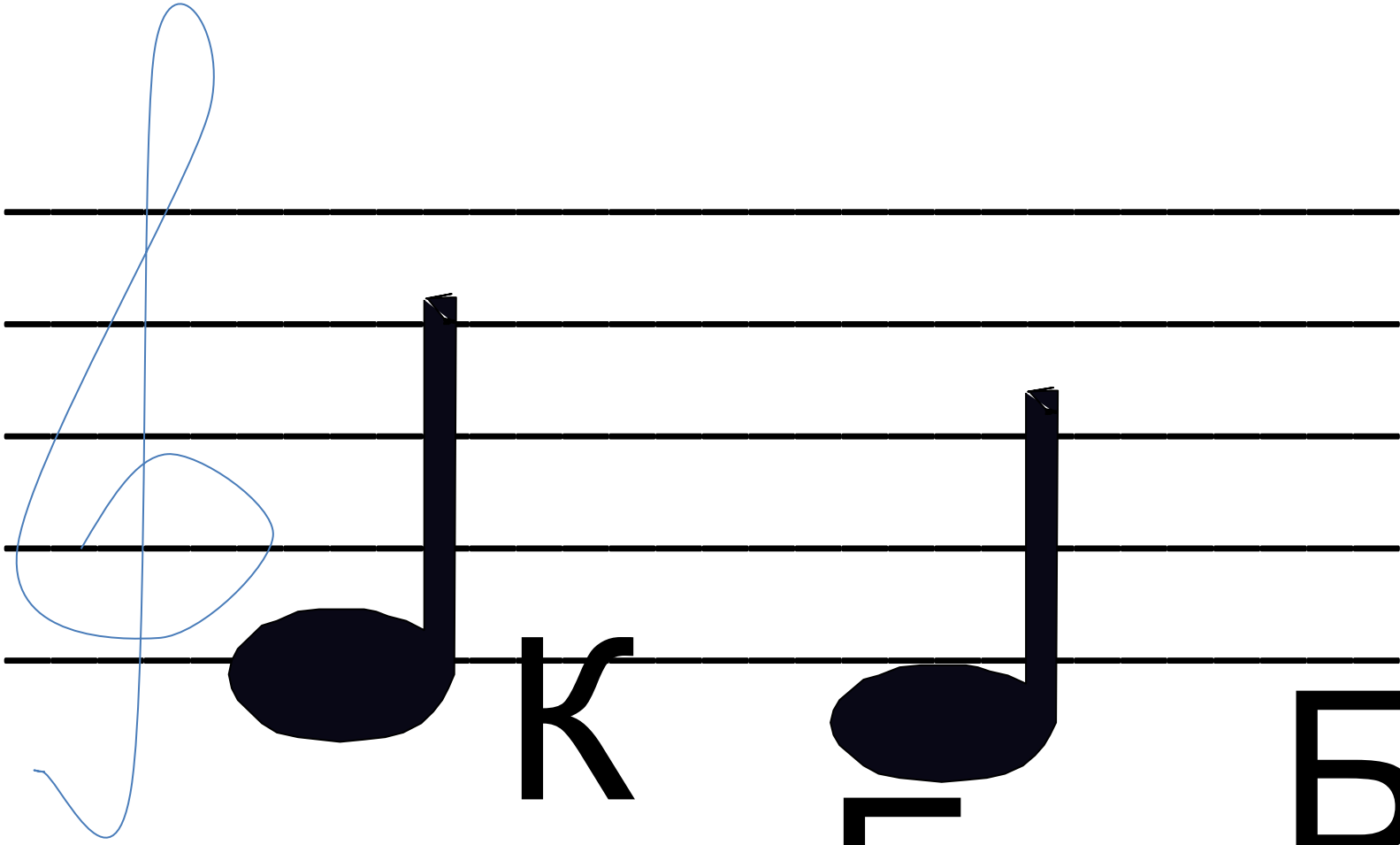
В

О

а

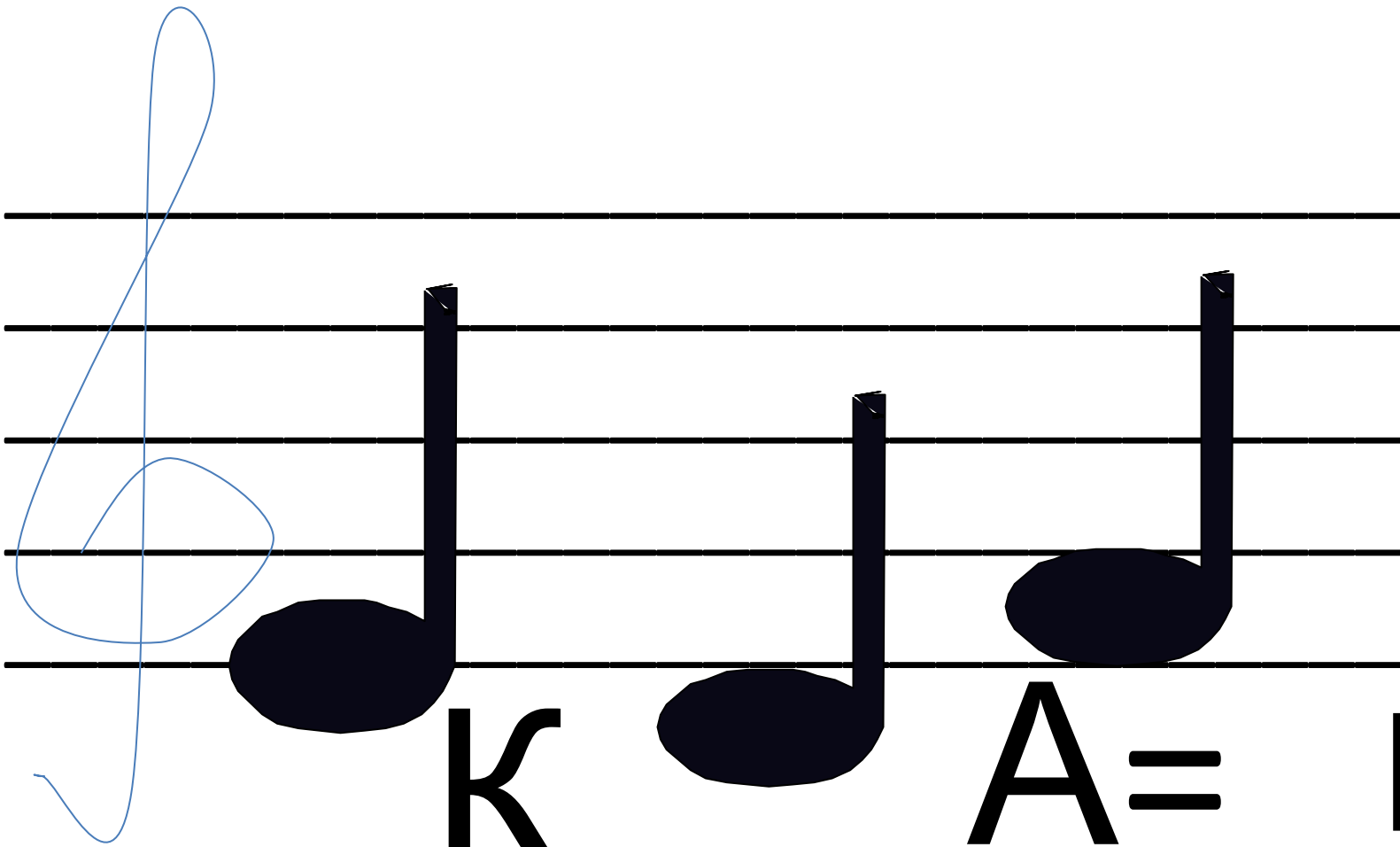


O=A

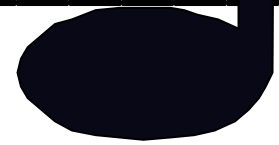


E =

O



K



A =

H

E =

O

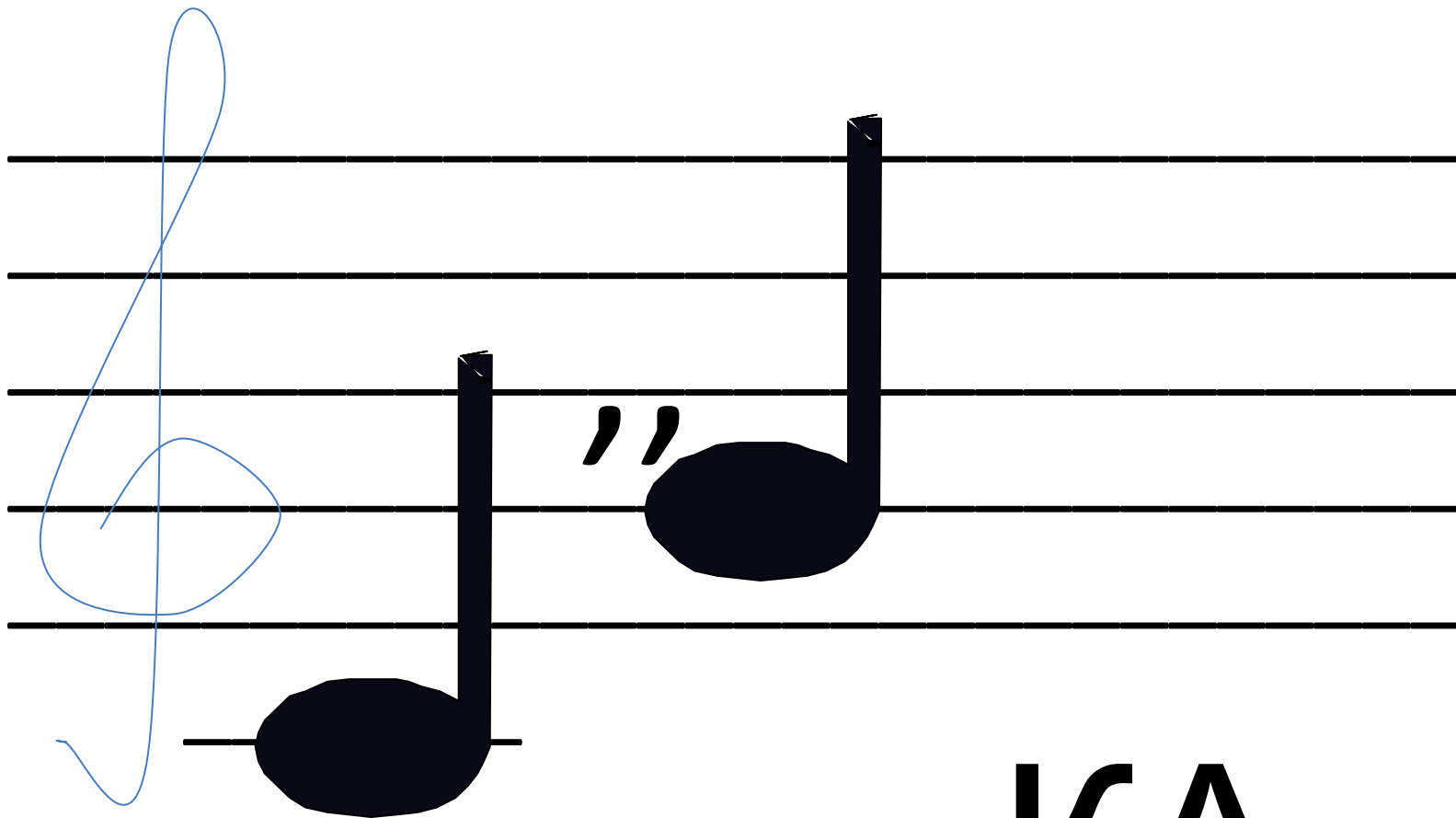
O

A musical staff with five horizontal lines. On the left, a blue treble clef is drawn. To its right, two double quotation marks are placed on the second line. Further right, a dark blue quarter note is positioned on the second line. To its right, a comma is placed on the second line. On the far right, another dark blue quarter note is positioned on the first line. Below the staff, the Cyrillic letters 'ПО Т' are written in a large, bold, black font, aligned with the musical elements above.



ΠΟ

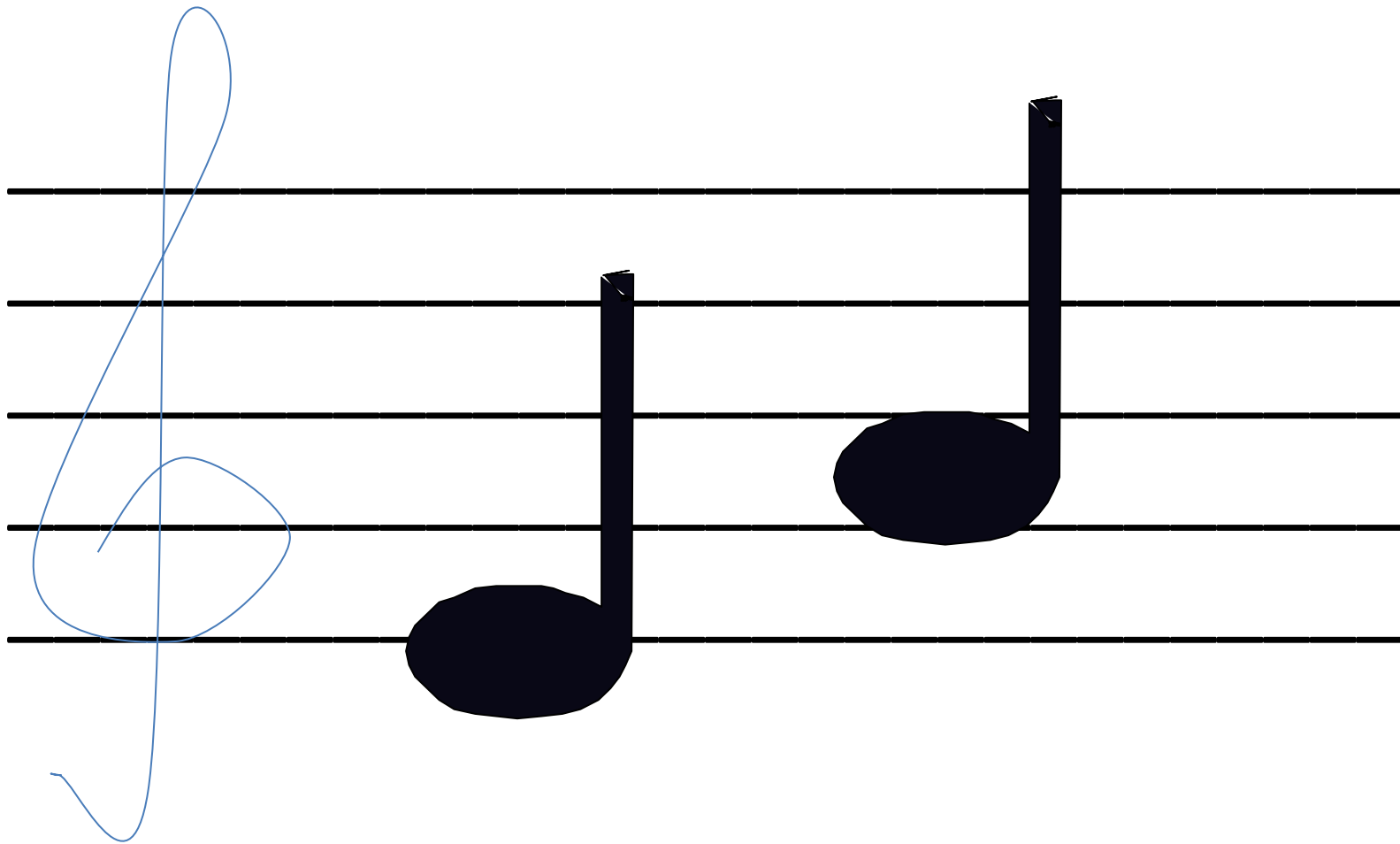
ΚΑ

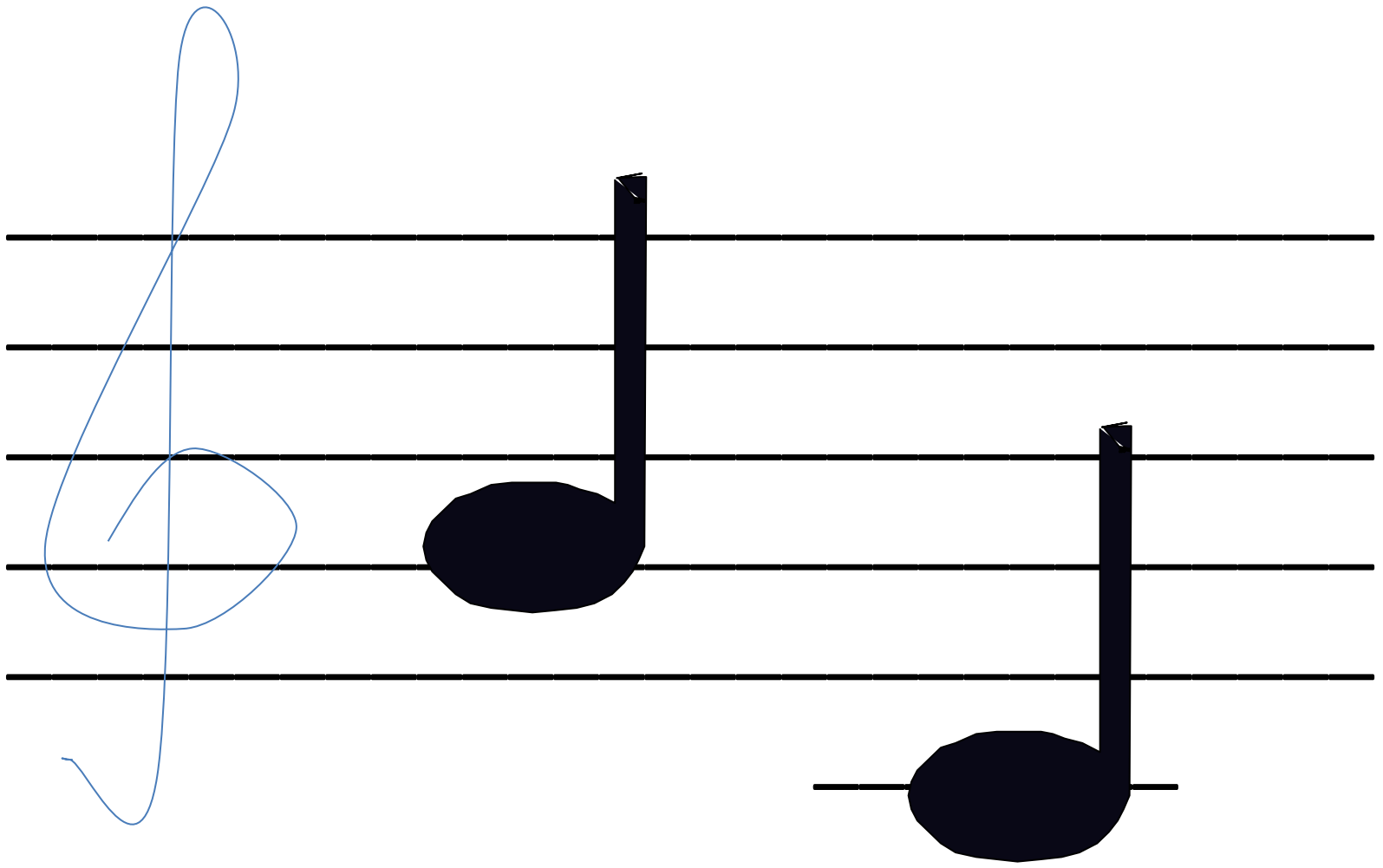


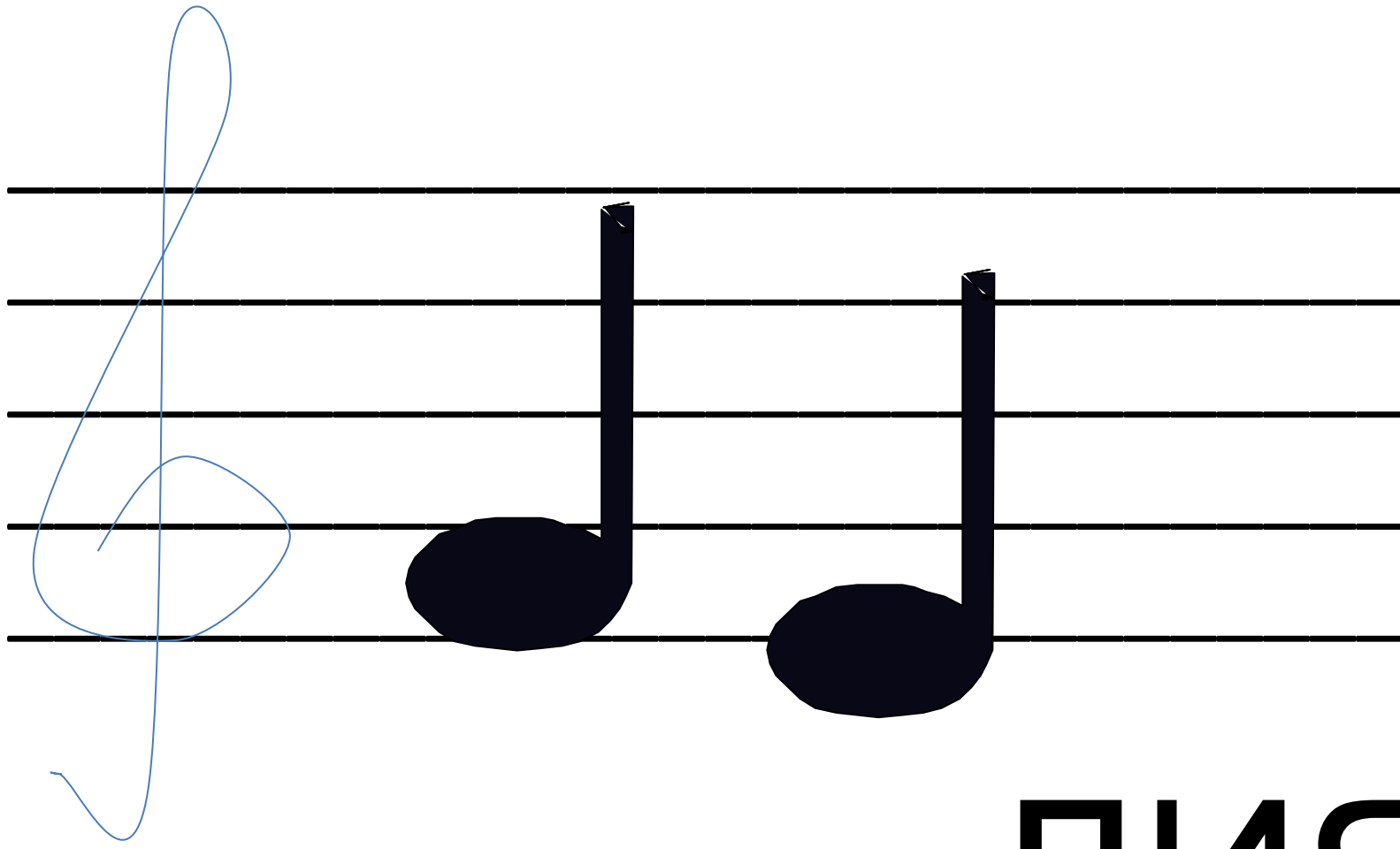
ПО

КА

A musical staff with five horizontal lines. On the left, a blue treble clef is drawn. The staff contains two black musical notes. The first note is a half note with its stem on the right and its head on the second line from the bottom. Below this note is the Cyrillic text "Я=A". The second note is a half note with its stem on the right and its head on the first line from the bottom. Below this note is the Cyrillic text "ПА". A small black comma is placed to the right of the second note.







ЛЯ