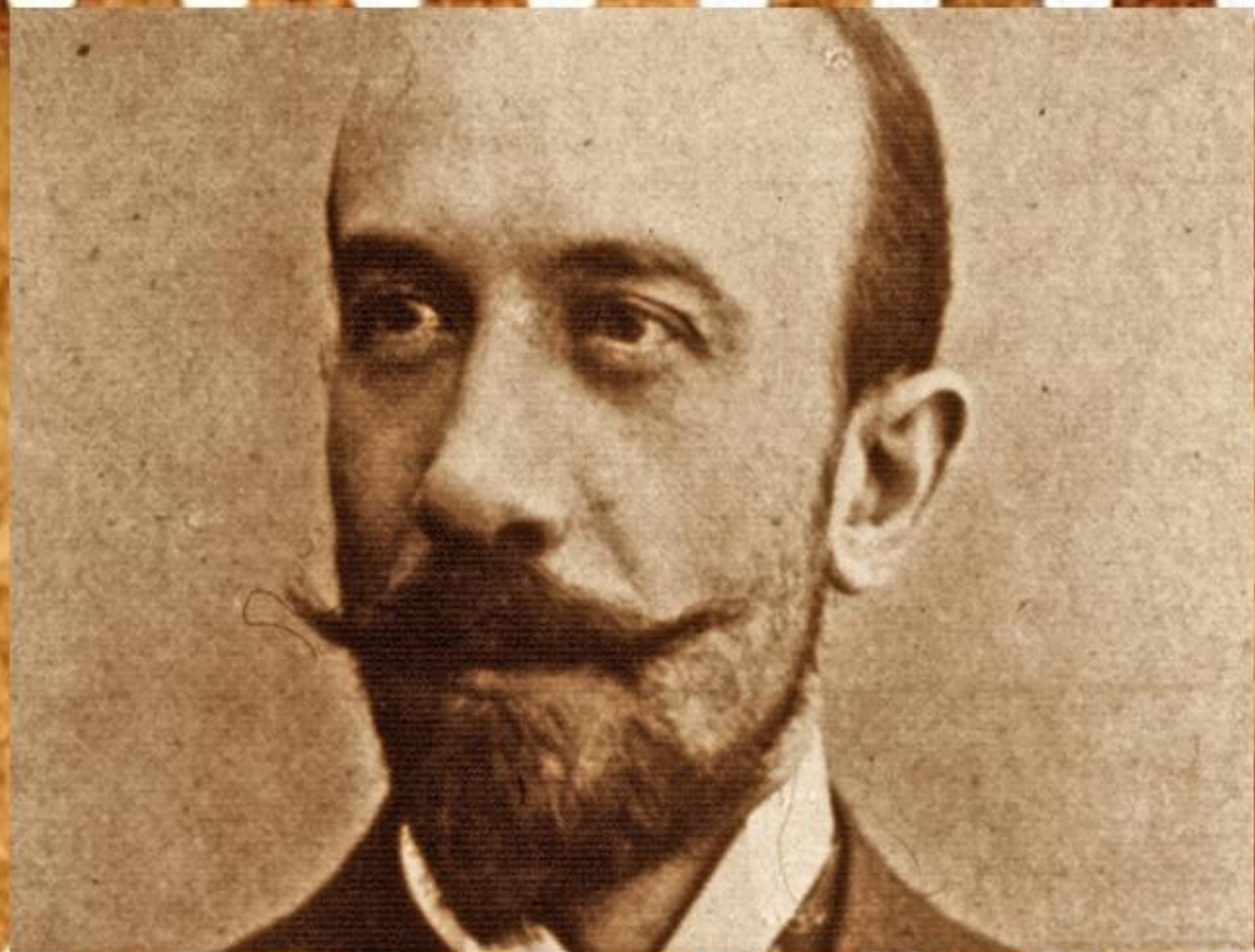




**Кино с 1909 по 1920-й:  
годы волшебных  
превращений.**













*The Supreme Picture of All Time*



*The* BIRTH OF A NATION

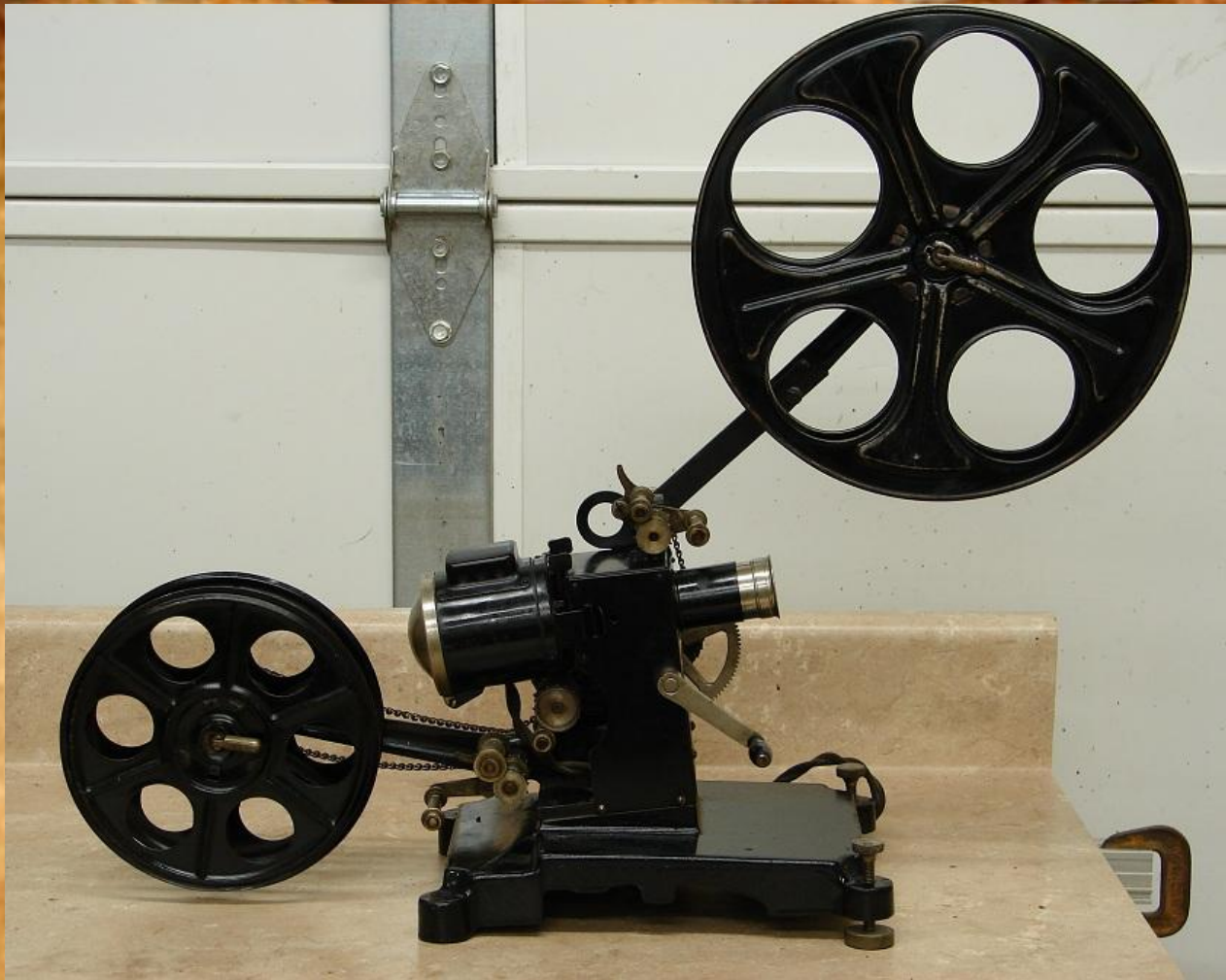


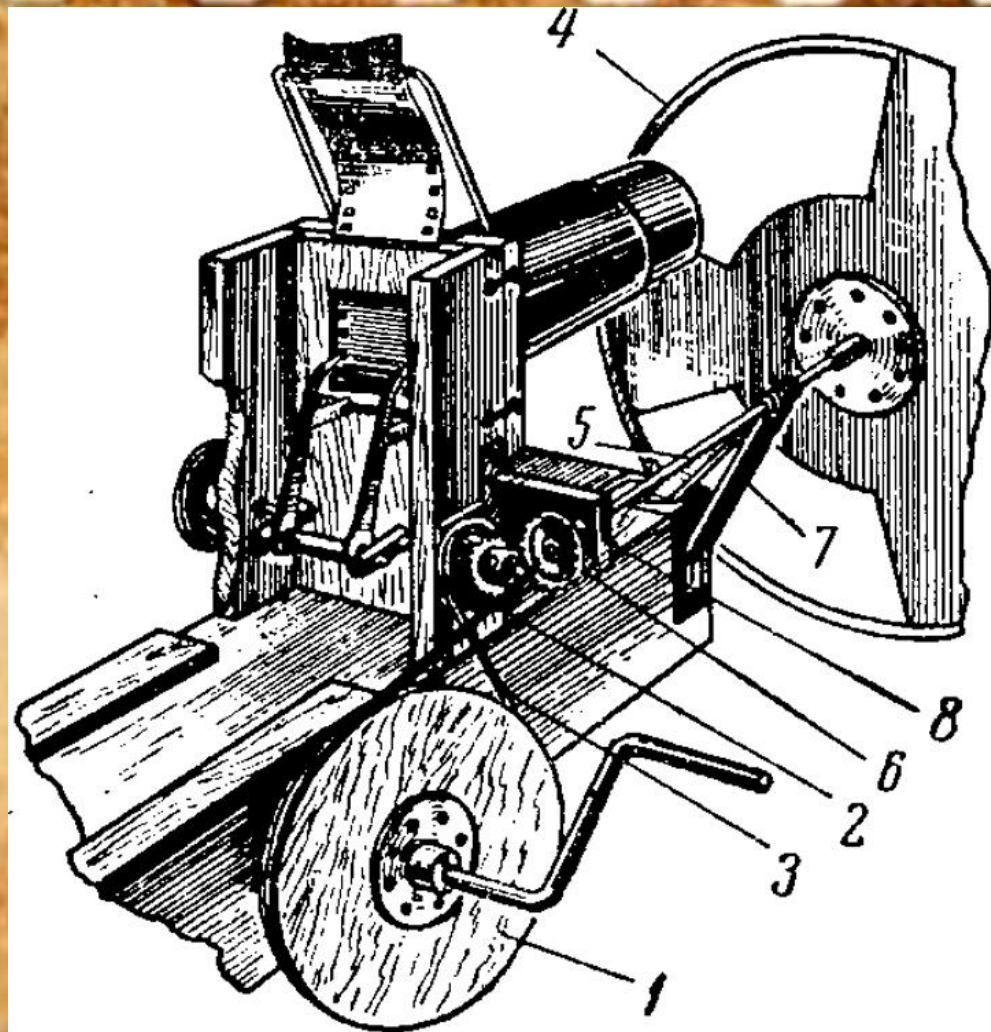


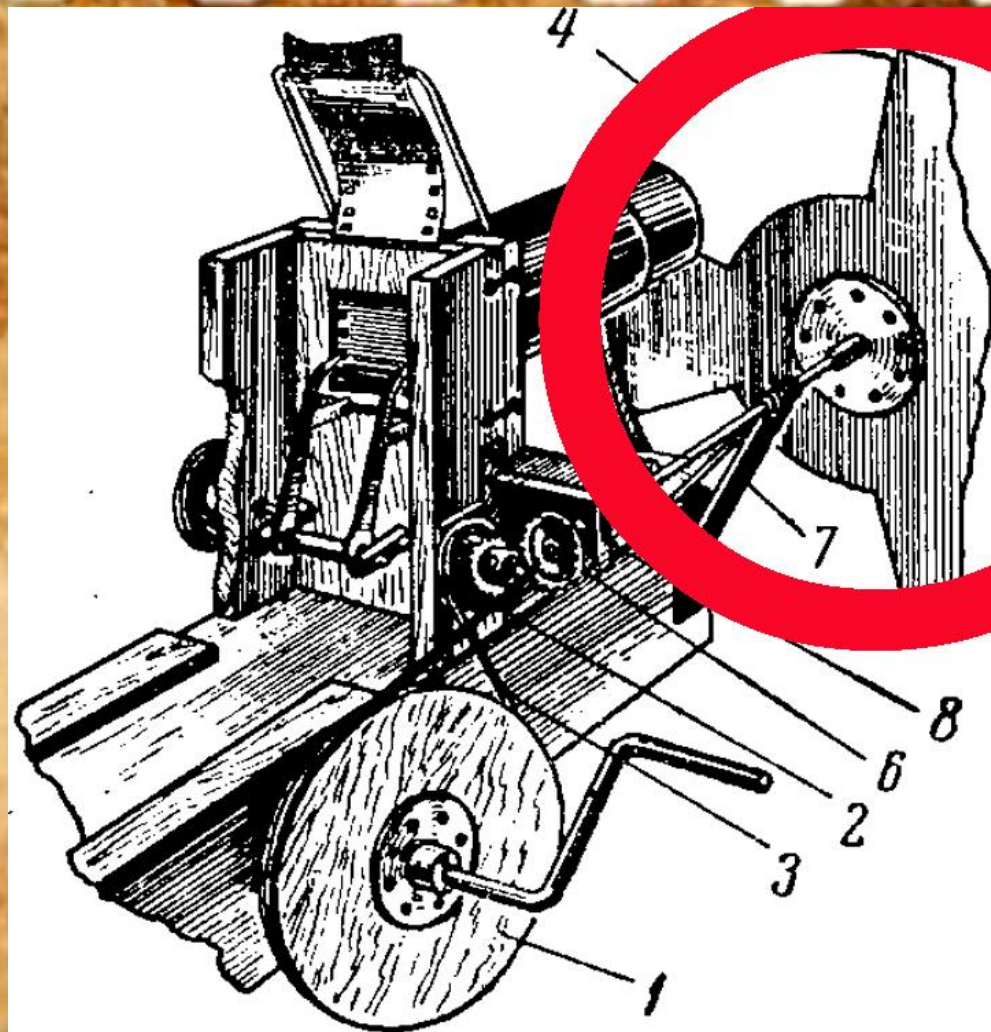


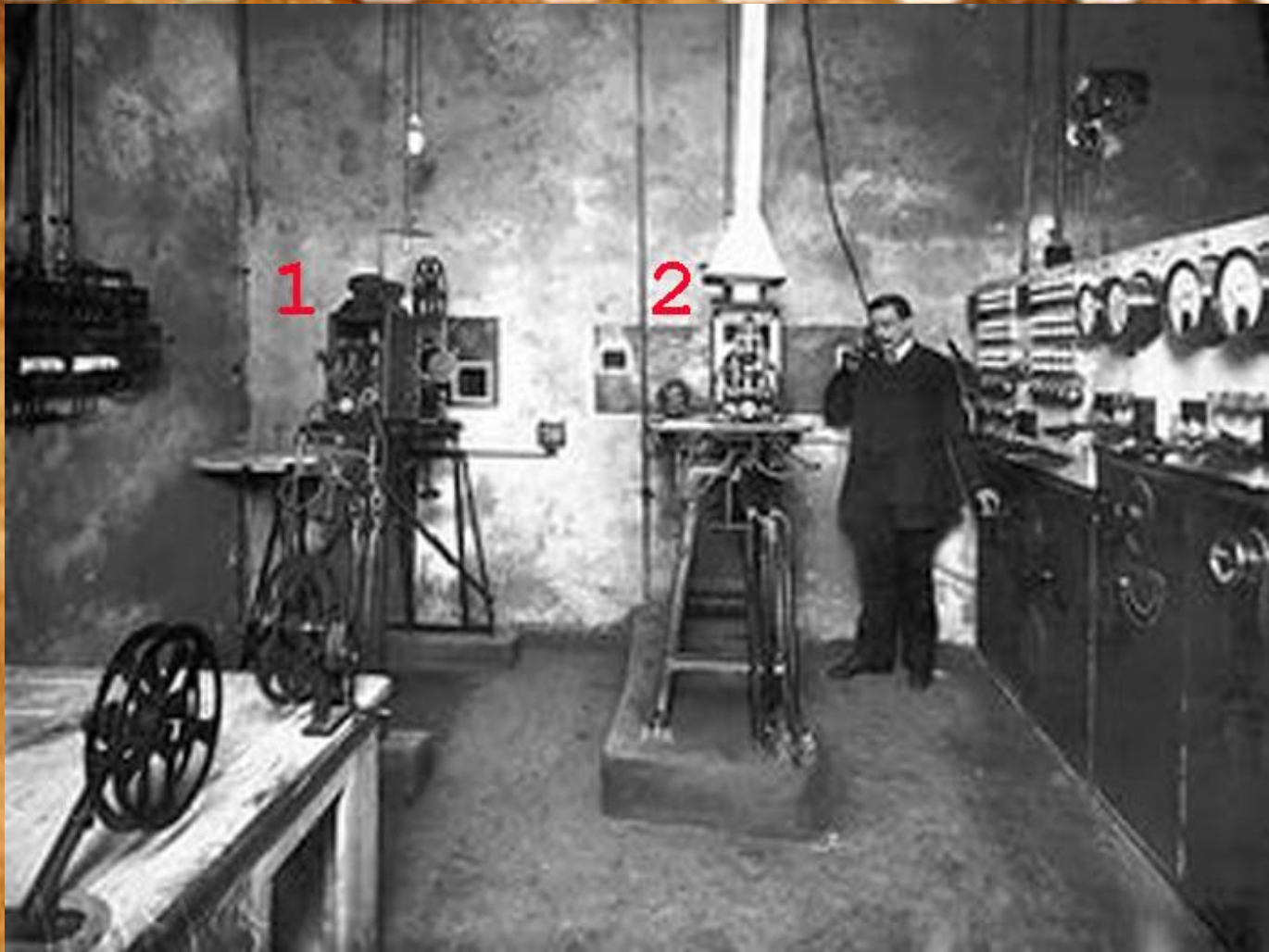






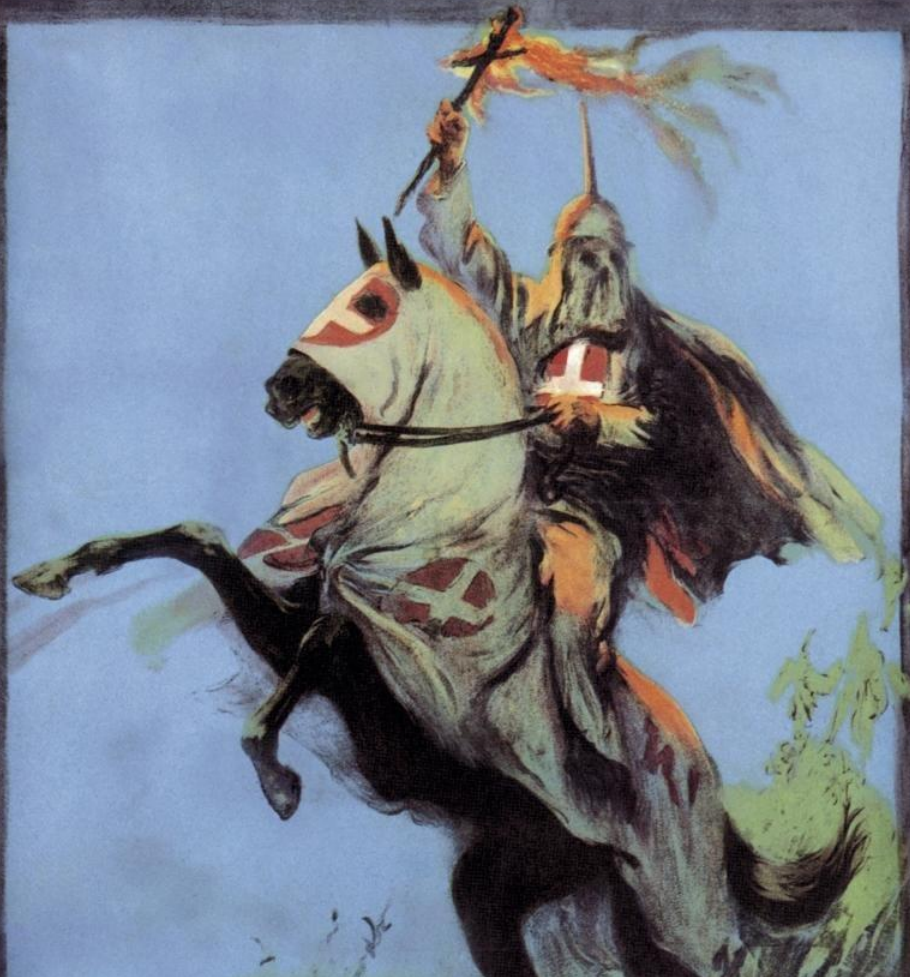












- THE FIERY CROSS OF THE KU KLUX KLAN -

D.W. GRIFFITH'S MIGHTY SPECTACLE

# THE BIRTH OF A NATION

FOUNDED ON  
THOMAS DIXON'S  
'THE CLANSMAN'

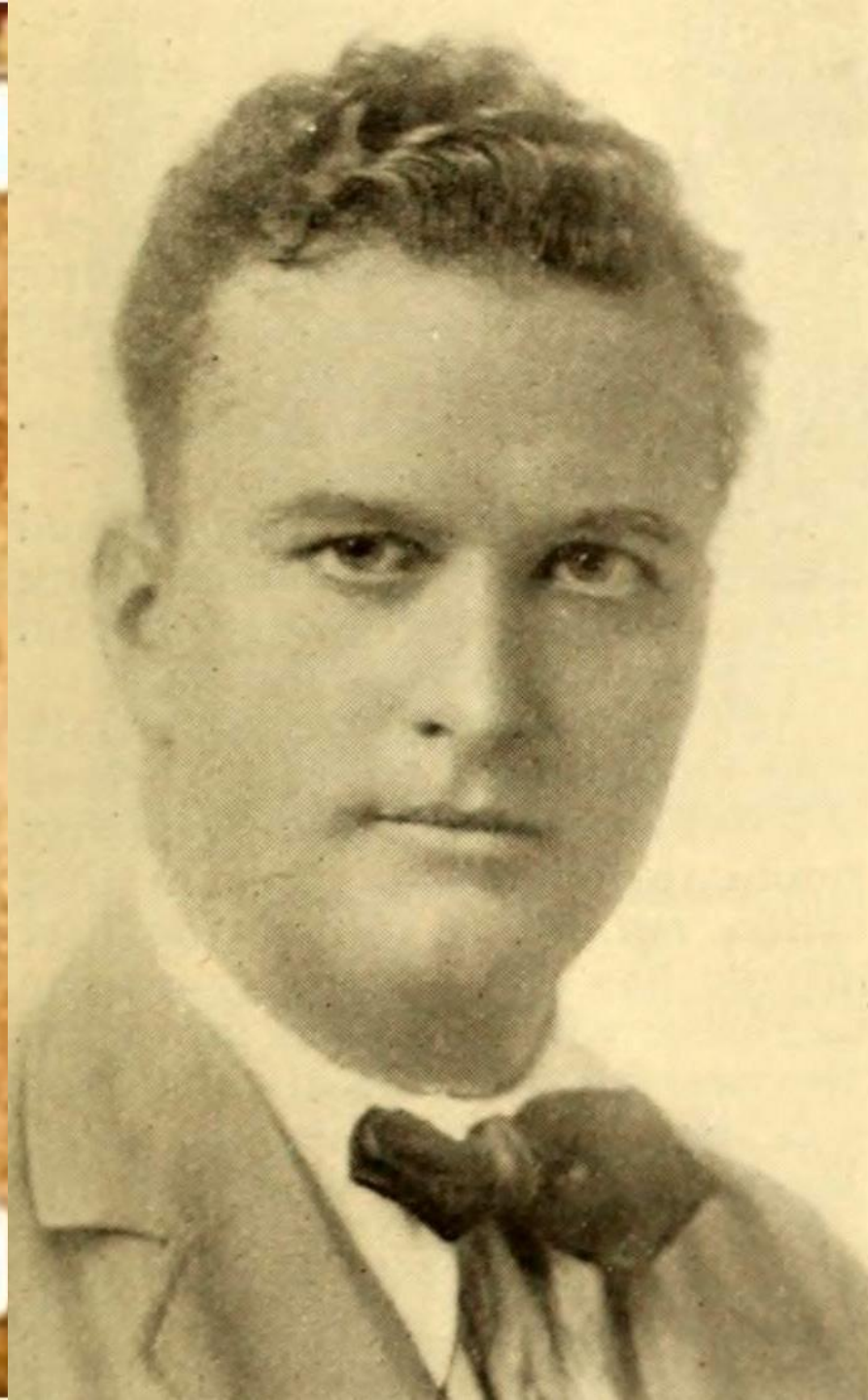


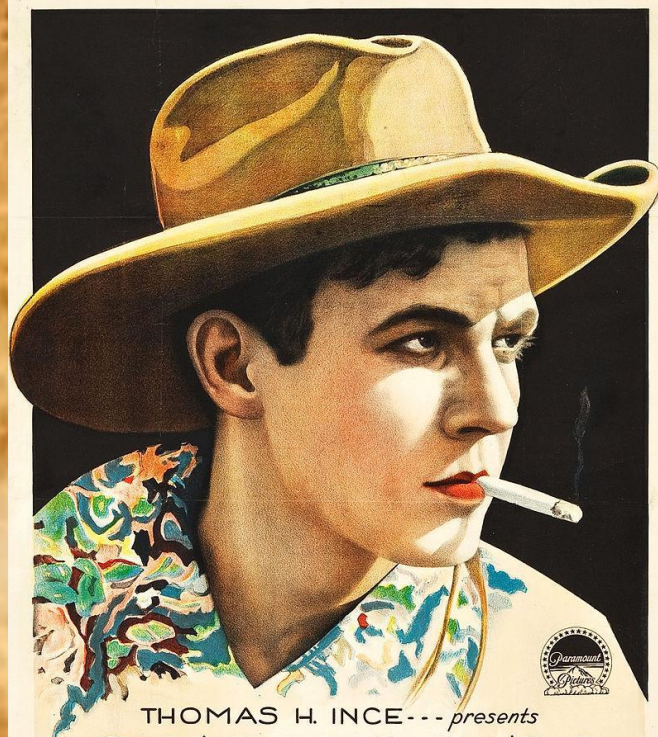




MISS FLORENCE LAWRENCE







THOMAS H. INCE... presents

# CHARLES RAY

IN  
"THE SHERIFF'S SON"

By WILLIAM McLEOD RAINE

Scenario by J. G. HAWKS ~~~ Directed by VICTOR L. SCHERTZINGER

Photographed by CHESTER LYONS ~~~ Produced by THOMAS H. INCE

A PARAMOUNT PICTURE

*Morgan*  
DISTRIBUTORS







AN ARTCRAFT PICTURE



THOMAS H. INCE  
PRESENTS

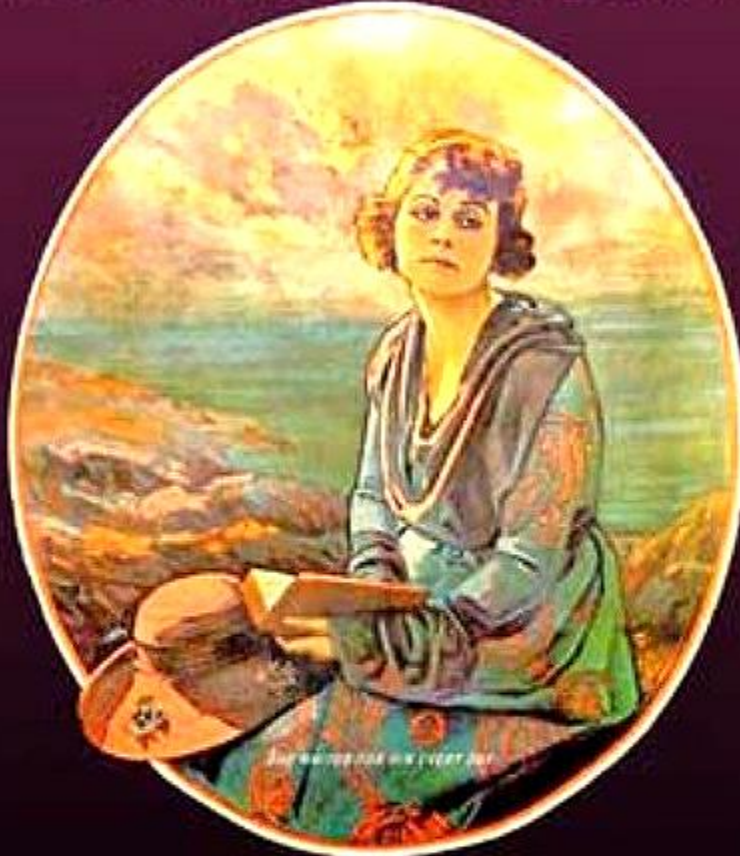
**WILLIAM S. HART**  
· IN ·  
**"RIDDLE GAWNE"**

BY CHARLES ALDEN SELTZER    PHOTOGRAPHED BY JOE AUGUST  
DIRECTED BY WILLIAM S. HART    SUPERVISION OF THOMAS H. INCE



Witzel  
47

A PARAMOUNT PICTURE



THE MATING OF MARCELLA IN 8 FEET AND

THOMAS H. INCE  
PRESENTS

**Dorothy Dalton**

*"The MATING of MARCELLA"*

by JOSEPH FRANKLIN POLAND

Directed by WILLIAM WELLS  
Photographed by JOHN F. STONE



Supervised by  
THOMAS H. INCE





THOMAS H. INCE PRODUCTION

" THE  
WEAKER  
SEX "

*Featuring*

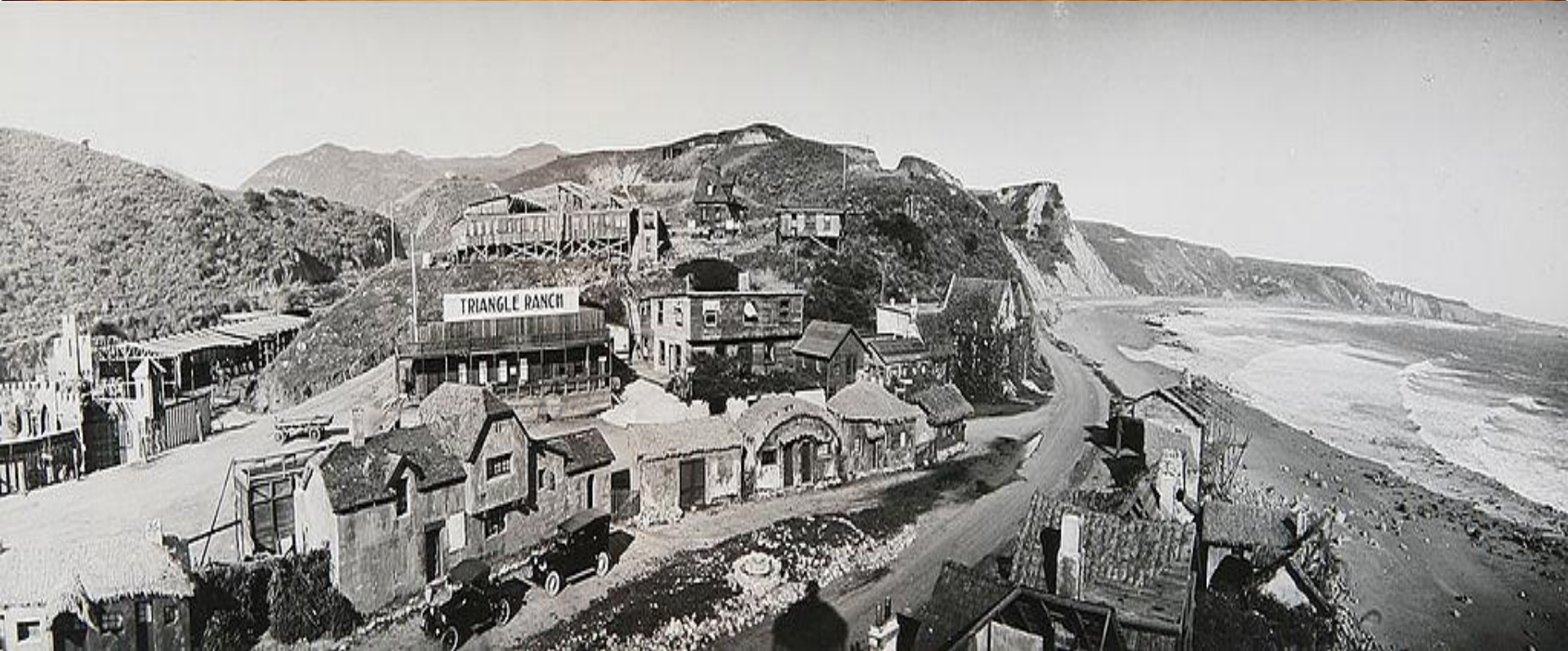
DOROTHY DALTON  
CHARLES RAY  
LOUISE GLAUM

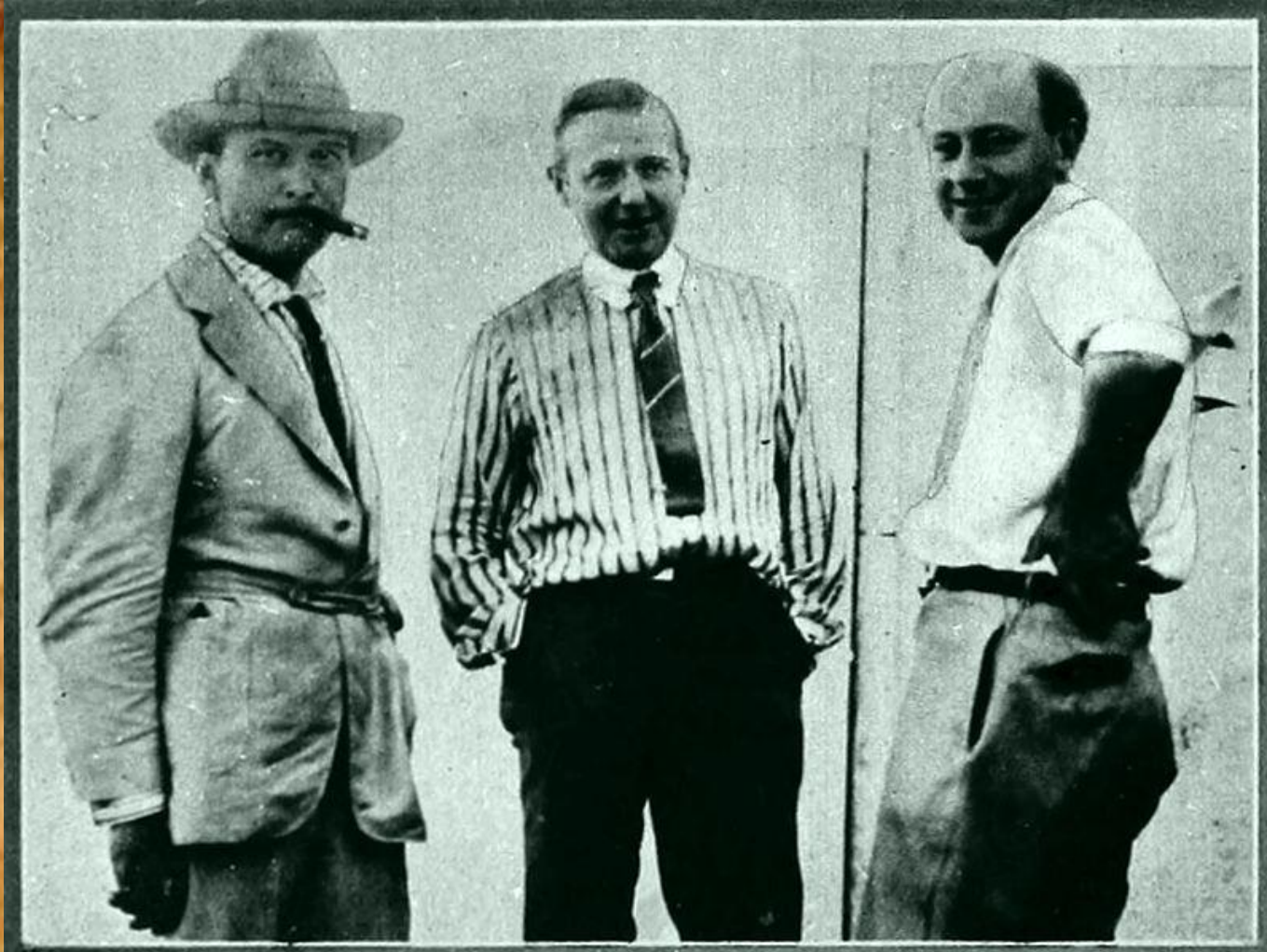


RELEASED THROUGH  
TRIANGLE DISTRIBUTING CORPORATION  
NEW YORK













**Голливуд.**

**Завоевание мира.**

