



Homemade sawmill

Norwegian houses made of dry timber

Homemade sawmill

The location of production

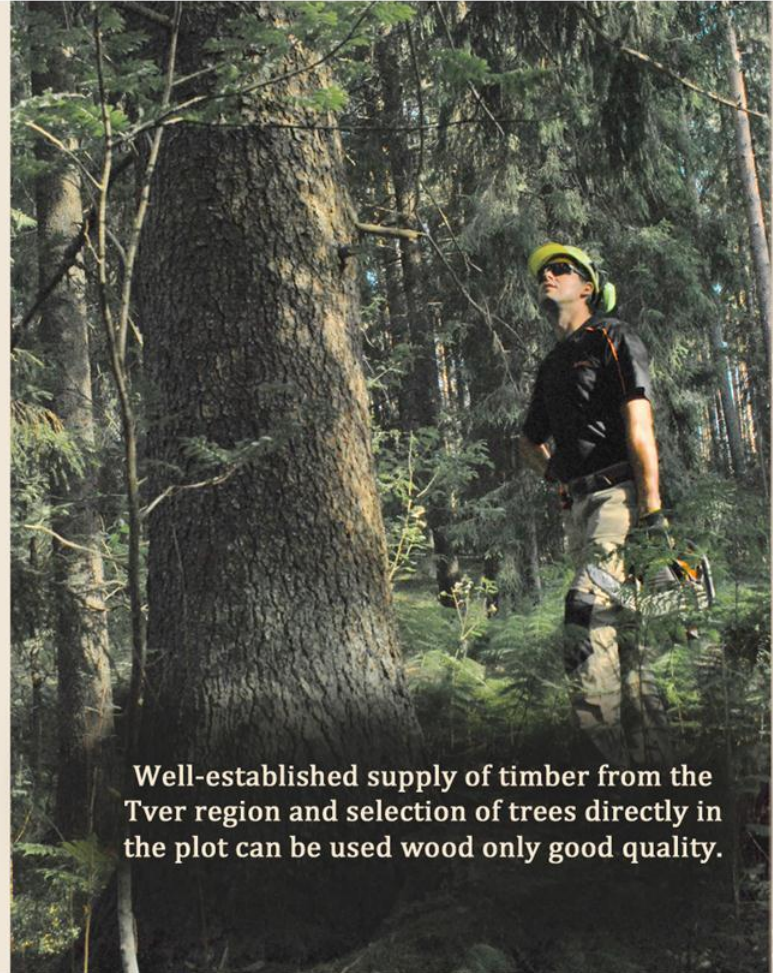
Russia, Tverskaya oblast, Penovskiy district, Bervenec village, area of 0.5 hectares

The essence of the project

Production of high-quality Norwegian houses made of dry two-sided cant in strict accordance with Norwegian standards

Our technology and know-how

- Selection of high-quality timber during harvesting stage
- Dry two-sided cant contains 20% moisture
- Chief Master taking refresher courses in Norway
- Original Norwegian books on woodcutting
- Swedish "Logosol" woodworking machines for cant manufacturing
- Connection of two-sided cant with self-blocking Norwegian lock.
- Original Norwegian hand-made axes
- W-shaped joisting sealant
- HollowFiber heat insulation
- Drip in lower timber set and curtained corner notches of timber blocking
- A patented method of longitudinal cant connection
- Environment friendly production
- Excellently equipped joinery workshop
- Artificial wood aging, wood brushing
- Artistic stained-glass windows



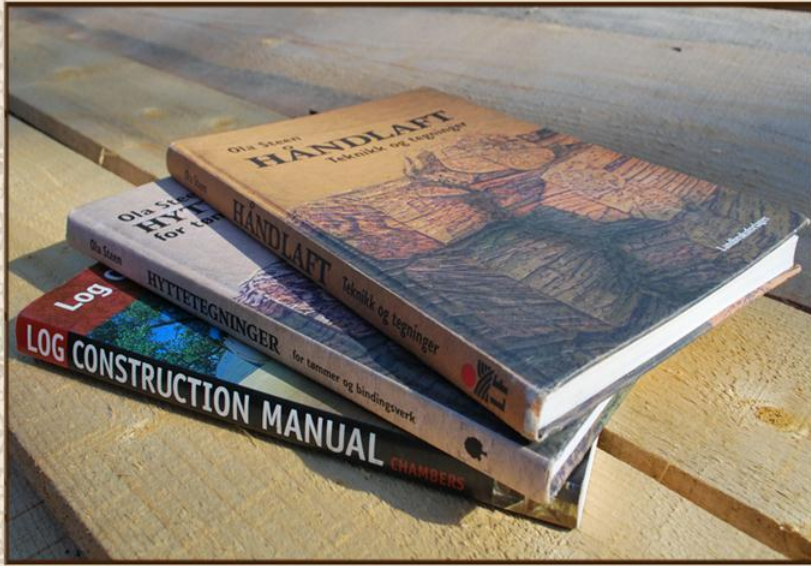
Well-established supply of timber from the Tver region and selection of trees directly in the plot can be used wood only good quality.



Dry cant won't "twist", there is no internal stress in it, antiseptic isn't necessary. It's easier to process and cracks less. House made of dry cant is move-in ready one month after assembling.



Chief cutter Igor Tereschenko, the one responsible for the quality at the construction site. He learned from one of the best Norwegian woodcutters – Utter Romtveid Norwegian's experience passes to our masters, it is a very productive and promising cooperation.



Books about carpentry craft from the best Norwegian woodcutters – great manual for both beginners and experienced masters. Norway woodwork is well known for its accuracy and precision.




Swedish "Logosol" woodworking machines allow to make cant with 1mm error on 6m piece. Such precision is possible only with high-class expensive woodworking machines.




“Norwegian cup” is the best gusset for two-sided cant. Tight fitting on the cutting stage produces a moisture- and airproof joint after shrinkage. It’s so tight, that it is impossible to shove a razor between timbers.



Norwegian axes have a special form and grinding angle, created exclusively for Norwegian cutting. Custom-made tools forged by the best Norwegian smiths Howard Berglund and Oyvind Klausen - excellent investment in quality and convenience of work..



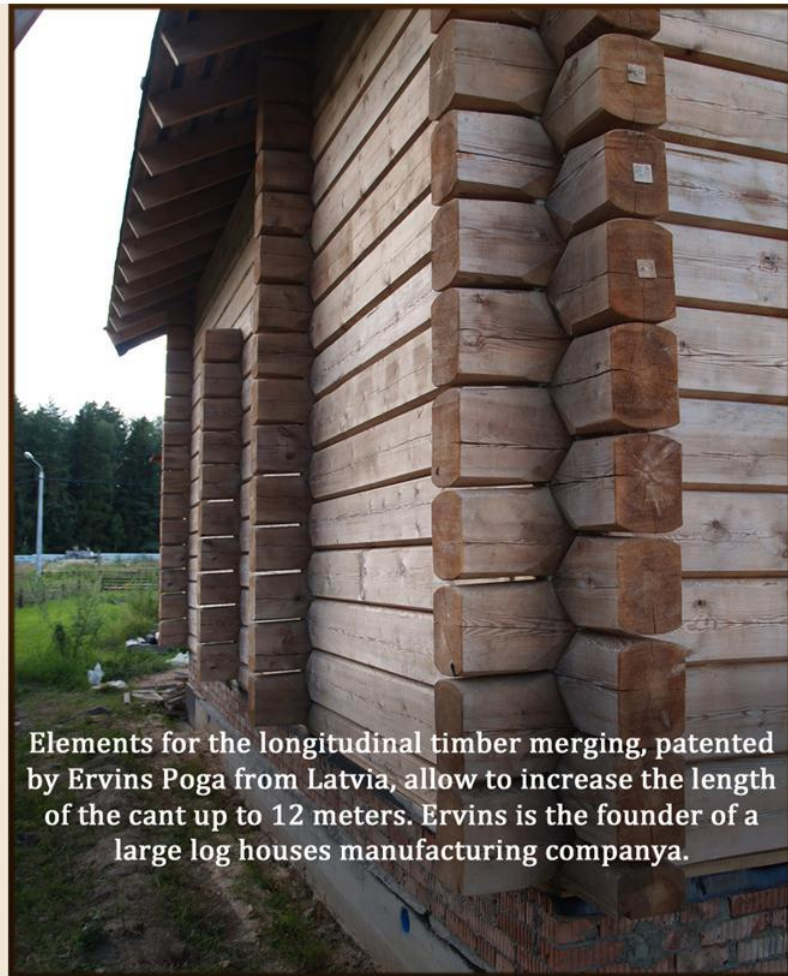
W-shaped longitudinal groove makes tight barrier and helps to maintain climate in the house. This connection method was patented by the Canadian master Lloyd Beckedorf in 1982 and since then has been used very successfully in manual cutting. In Russia we were the first to use it on the two-sided cant.



HollowFiber insulation is a nonwoven thermally-attached fiber. It doesn't lose its shape over the years, doesn't absorb moisture, doesn't burn, it's environmentally friendly and very easy to use.



A special groove in the groundsill helps to protect the foundation and walls of the house from moisture and rotting. Specially processed ends of the cant are well ventilated and protect the corners of the house from rain.



Elements for the longitudinal timber merging, patented by Ervins Poga from Latvia, allow to increase the length of the cant up to 12 meters. Ervins is the founder of a large log houses manufacturing company.



. We use only biodegradable lubricants and antiseptic liquids. When rip-sawing, we use only clean water for saw cooling.



We have a well-equipped carpentry workshop where it's possible to craft any furniture and home decoration items from solid wood - from doors and windows to spiral staircases and carved pillars.



Wood brushing is an excellent way to quickly and efficiently age a tree. A rotating nylon brush removes soft layers, producing pattern of hard fiber. It is used in the finishing of floors, walls and furniture.



Artistic stained-glass windows and a lot of experience with glass processing extend our opportunities in home decoration and interior design.

"Venice", 75 X 75cm



"Orchids" , 200 X 150cm



"Dragonflies", діам. 1м