

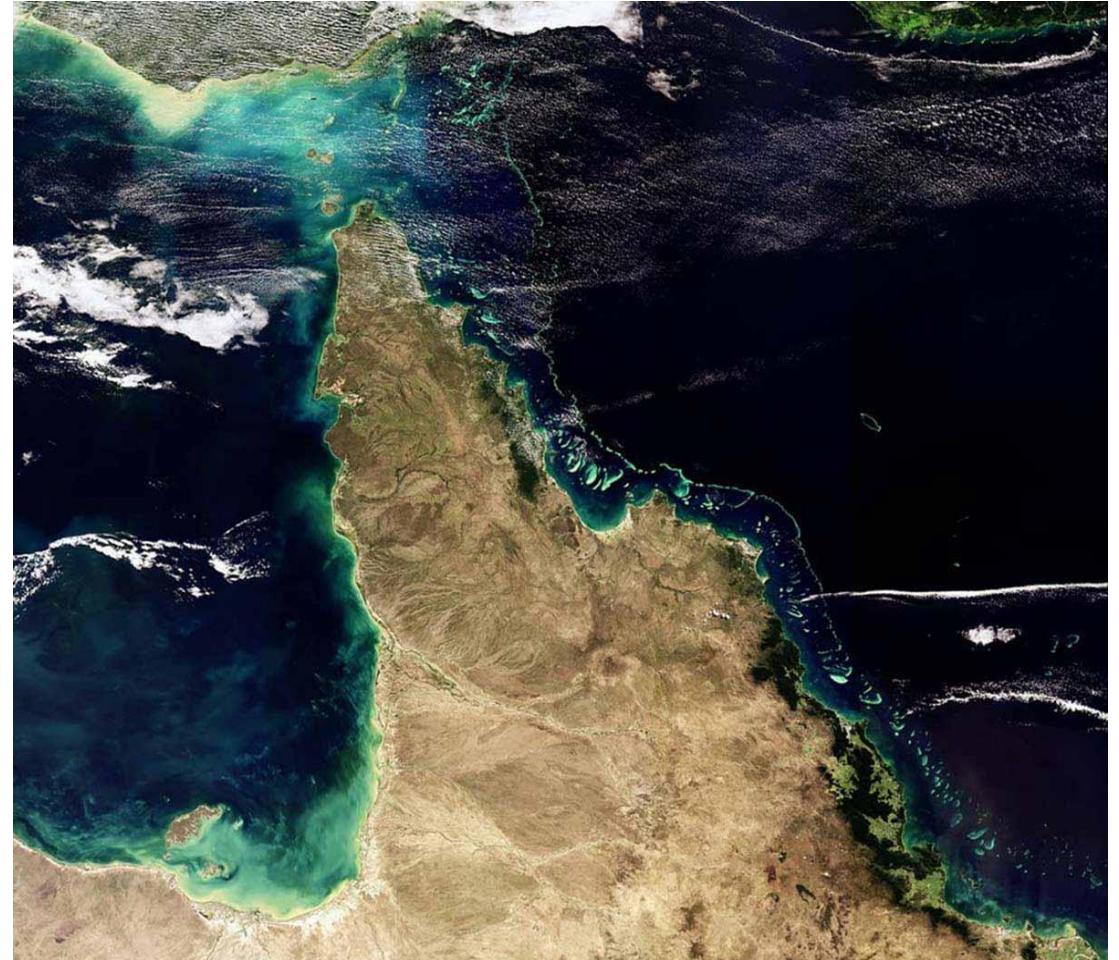
The Great Barrier Reef

By Daria Trubitsuna

325 group

Welcome to Australia's Great Barrier Reef!

The Great Barrier Reef is the largest coral system in the world. It is composed of over 2,900 individual reefs and 900 islands stretching for over 2,300 kilometres. The reef is located in the Coral Sea, off the coast of Queensland, Australia. It is so big that it can be seen from space!

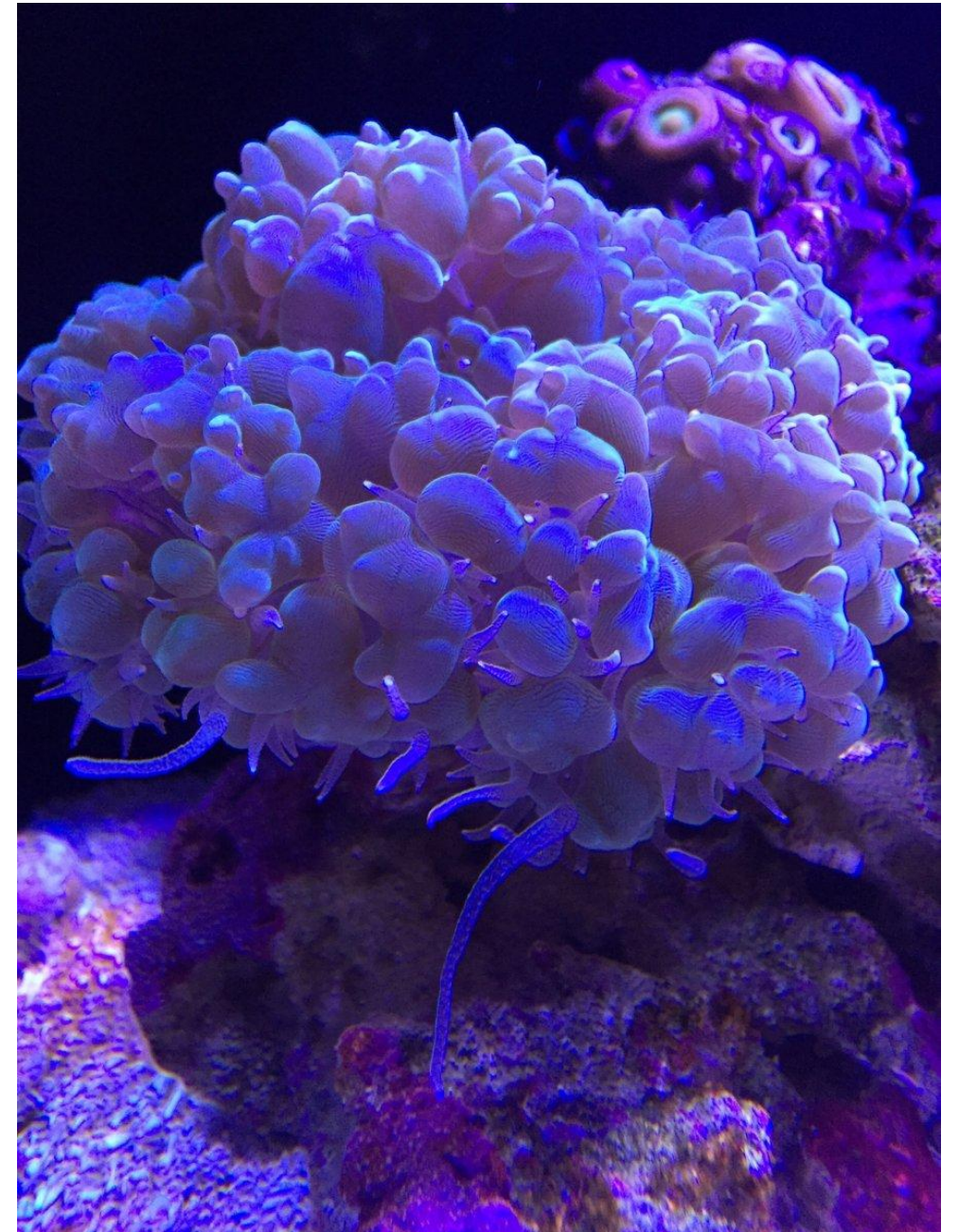


The inhabitants of the reef

The Great Barrier Reef supports an extraordinary diversity of life. The reef is a home to 1,500 species of tropical fish, over 200 types of bird and 20 species of reptile, including the endangered Green Sea Turtle.



The reef itself is a living organism. It has been formed over thousands of years by the action of tiny creatures called coral polyps.



Ecological situation



A large part of the reef is protected by the Great Barrier Reef Marine Park, which helps to limit the impact of human use, such as fishing and tourism. But there are still problems affecting the ecological state of the reef, for example: climate change, pollution, pollution from mining and etc..

Tourism

Despite ecological problems, some parts of the reef are used for tourism. The reef is a very popular destination, especially for scuba divers.



Thanks for your attention!