

Directions for Main Character

Actual Image of Lalitha Devi - check notes for more



Base Image of Lalitha Devi - the key part which differentiates Lalitha Devi from rest of the Devi images is that Lalitha Devi has sugar cane in her right hand

Below are sample Devi images - use them as template to come up with the main character design - you can mix up 2 or more image features but make sure that she represents the actual goddess (& has sugarcane in her left hand). Refer to actual image slide for reference



Base Image of Lalitha Devi - the key part which differentiates Lalitha Devi from rest of the Devi images is that Lalitha Devi has a sugar cane in her right hand



Below are sample Devi images - use them as a template to come up with the main character design - you can mix up 2 or more image features but make sure that she represents the actual goddess (& has a sugar cane in her left hand). Refer to the actual image slide for reference



1. Shrimata

Meaning - *Mother who gives immeasurable wealth who removes all sorrows and gives only happiness - indicates also her role of creation.*

Image - Main character Image

1. Shrimaharagni

Meaning - *She who is the empress who takes care of the universe- indicates her role of protection*

Image - Add universe to the main character image - somewhat looks like this



3. Shrimat Simhasaneshwari -

Meaning - She who sits on the throne of lions - indicates her role of destruction

Image - Main character image sits on the throne as shown below - emphasize the lions in illustration



4. Chidagni Kunda Sambootha

Meaning - She who rose from the fire of knowledge and is the ultimate truth

Image - Illustration should look like the image shown below - add fire to the standing main character image



5. Deva karya samudyatha

Meaning - *She who is interested in helping devas*

Image - Illustration should look like the image shown below - add more god images to base image



6. Udyat bhanu sahasrabha

Meaning - *She who glitters like thousand rising suns*

Image - Add sun behind the main character image

7. Chatur bahu samanvidha

Meaning - *She who has four arms*

Image - *Main character image*

8. Raga Swaroopā pasadya

Meaning - *Who holds in her lower left hand a noose representing the power of love*

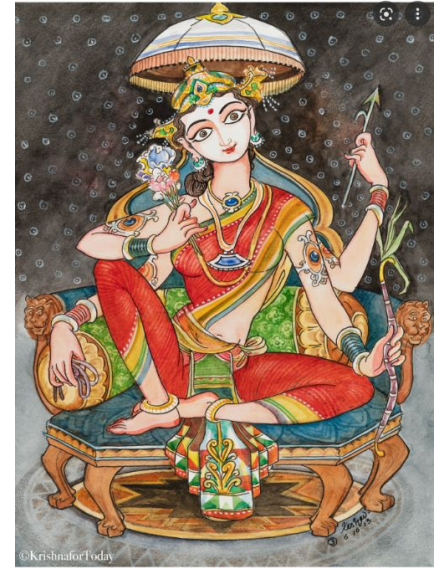
Image - *highlight the left hand signifying love*

9. Krodhakarankusojwala

Meaning - *Krodha* means hatred and *akāra* means knowledge. This *nāma* talks about subtle body. Knowledge is always subtle.

She uses this elephant hook to destroy the hatred if developed in Her devotees and gives them knowledge.

Image - show this hook in right upper arm of the main character image



10. Mano Rupeshu Kodanda

Meaning - *She who has the bow of sweet cane which is her mind-in one of her left hands*

Image - Highlight the sugar cane from the main character image

11. Pancha than mathra sayaka

Meaning - *She who is holding the arrows of the five subtle elements*

The five subtle elements are her five arrows, and they are rasa (taste), rupa(form), sabda (sound), sparsa (touch) and gandha (smell).

Image - use the below image as reference



