

747/767/777 Floor Coverings

Kozlov Egor

NIK Ltd

We do:

- Mat installations
- Threshold installations
- Carpet installations

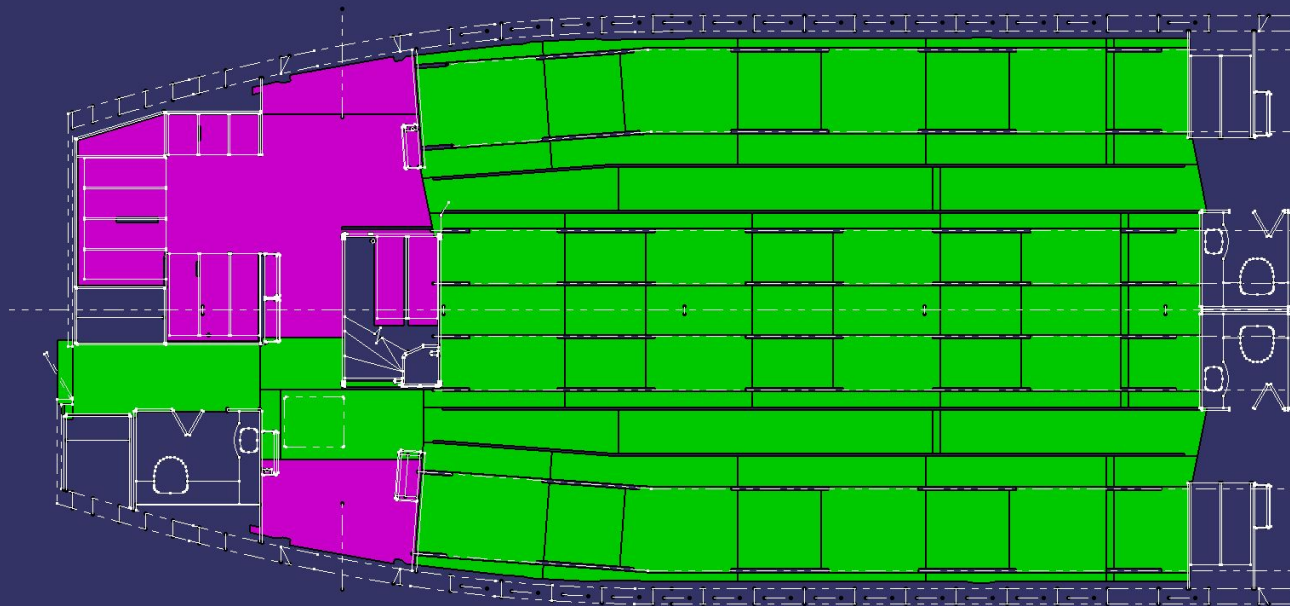
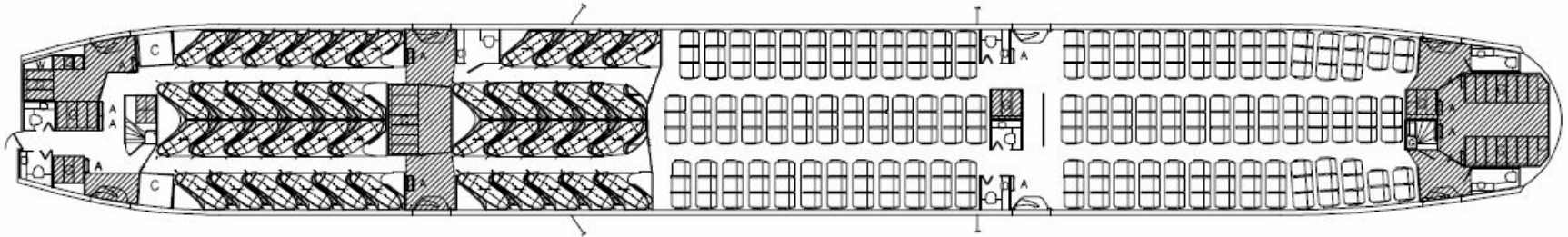
- Kick strip installations

- Moisture barrier installations
- Laminate installations
- Splashguard installations U/D
- Seat track cover installations

Stages of work

Get task	< ETAC
Find models	< PDM, IVT
Load models	Catia < Enovia
Create models	Catia
Create INSTL drawing	Catia
Create Module	PDM
Create Action	Enovia
Check	
Check in	
Design Review	

Mats and Carpets

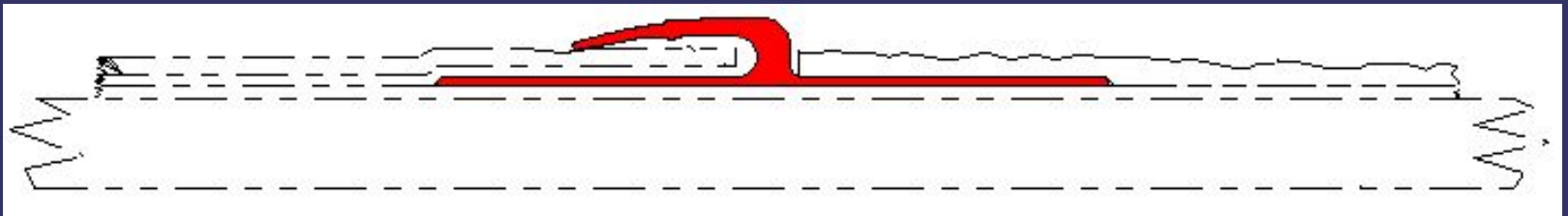


Functions

Carpets:

Mats:

Thresholds: divide mats and carpets



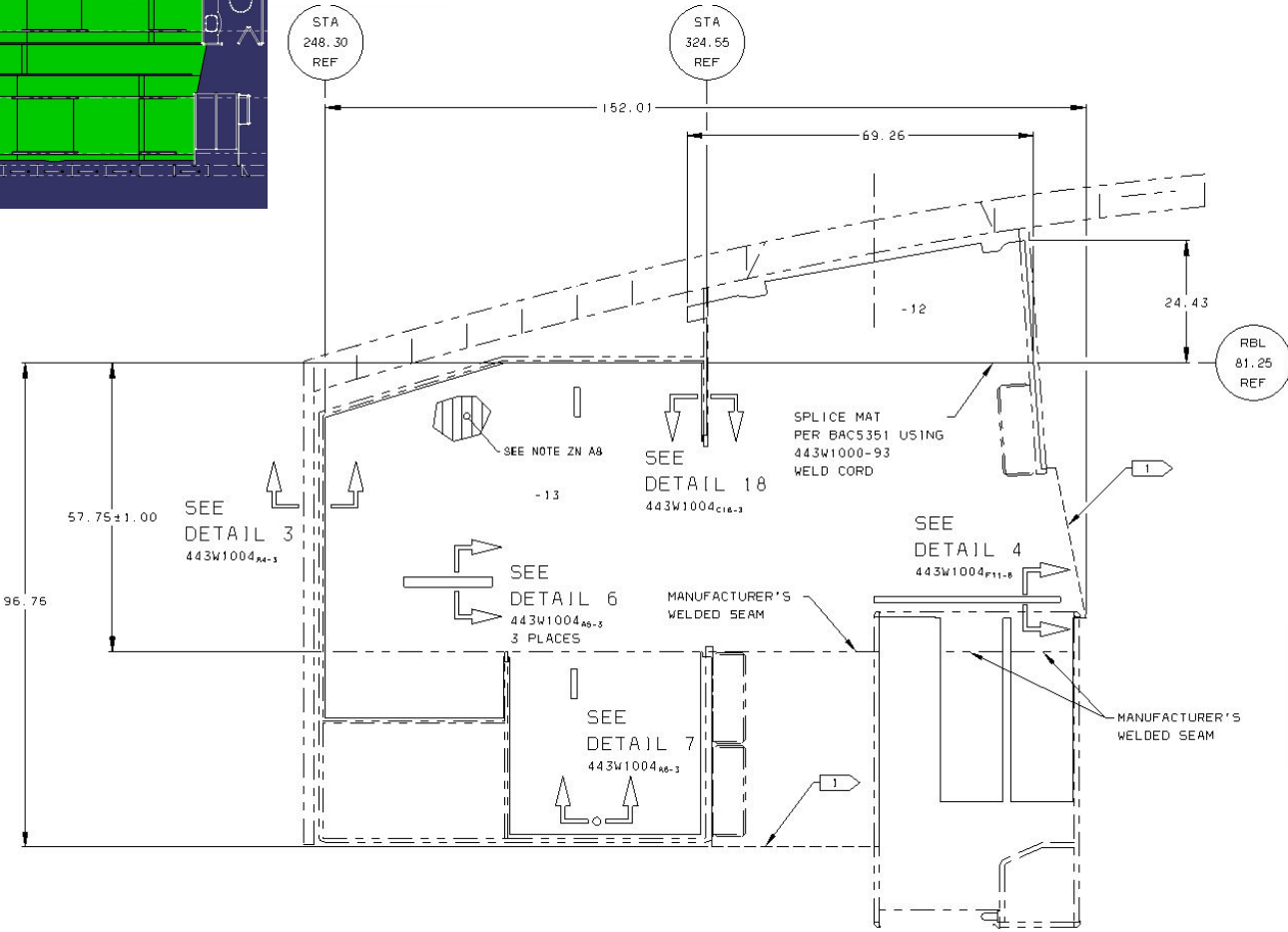
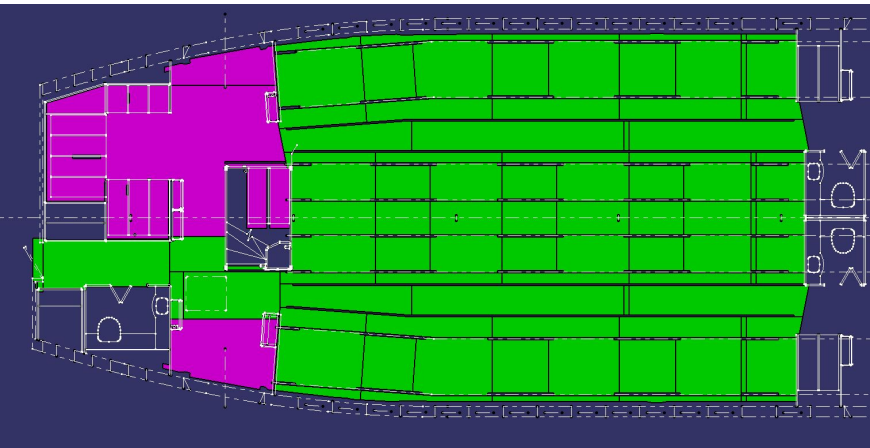
On a plane it looks like that:



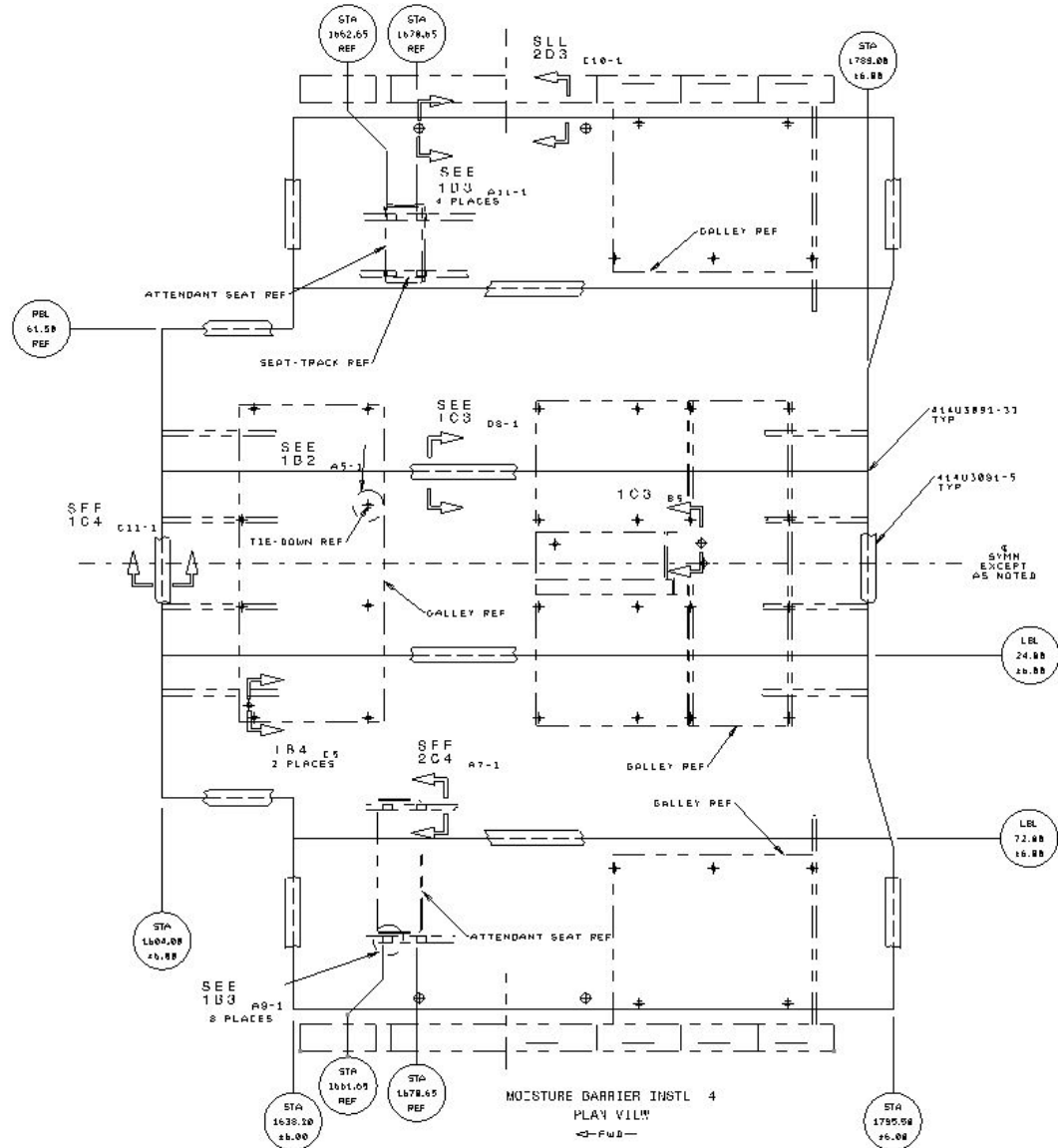
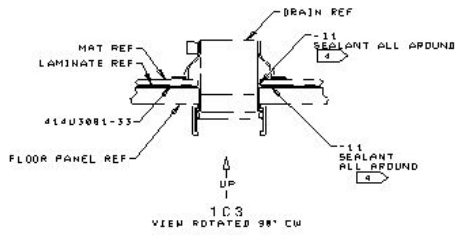
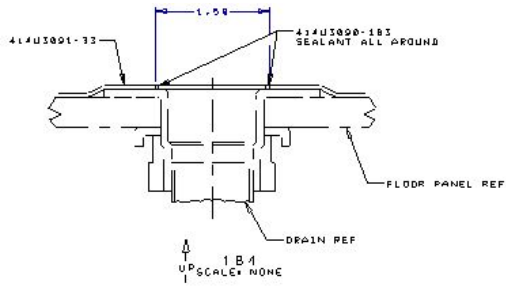
Production



Model and PS



Moisture Barriers 747



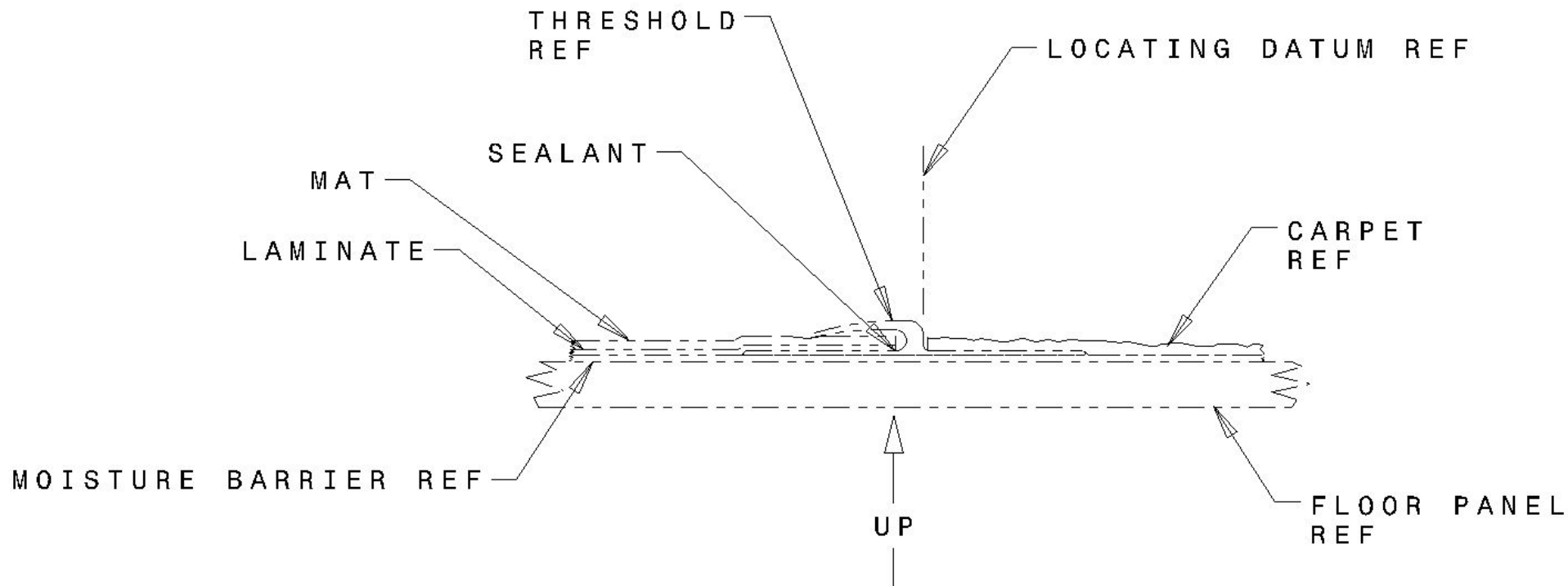
Laminates



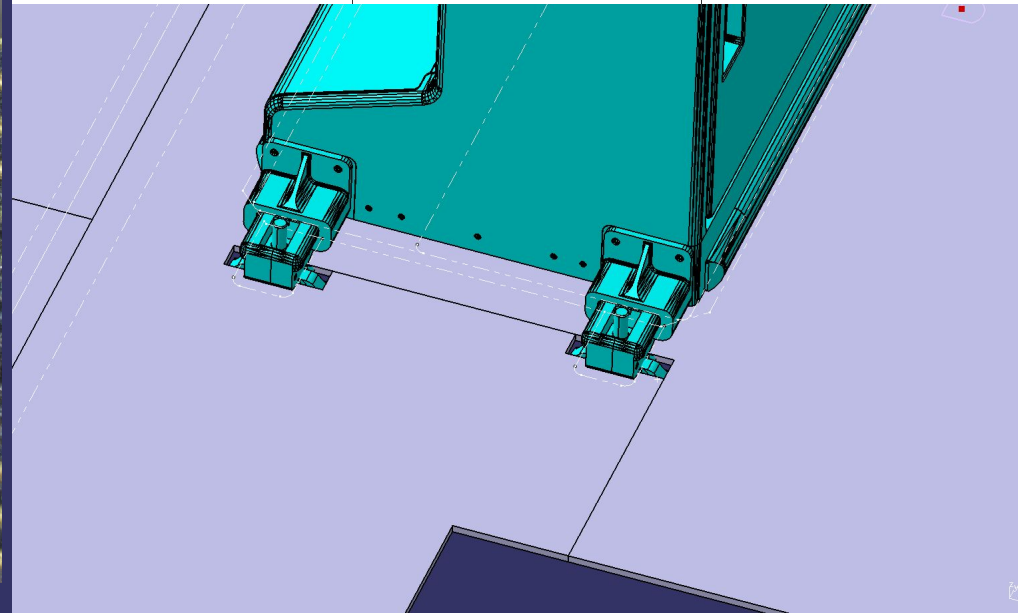
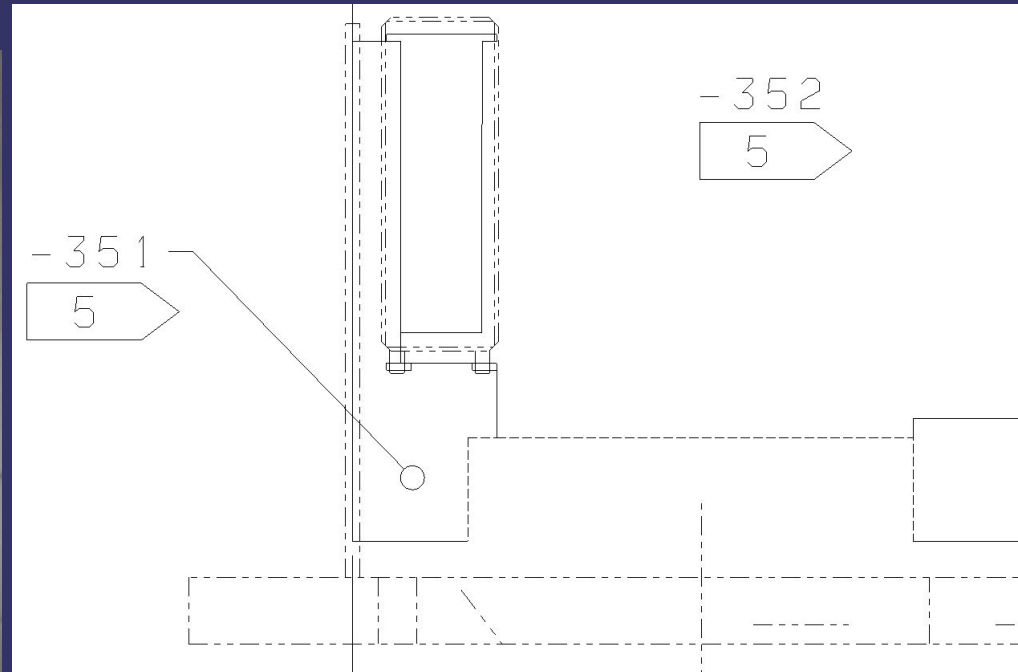
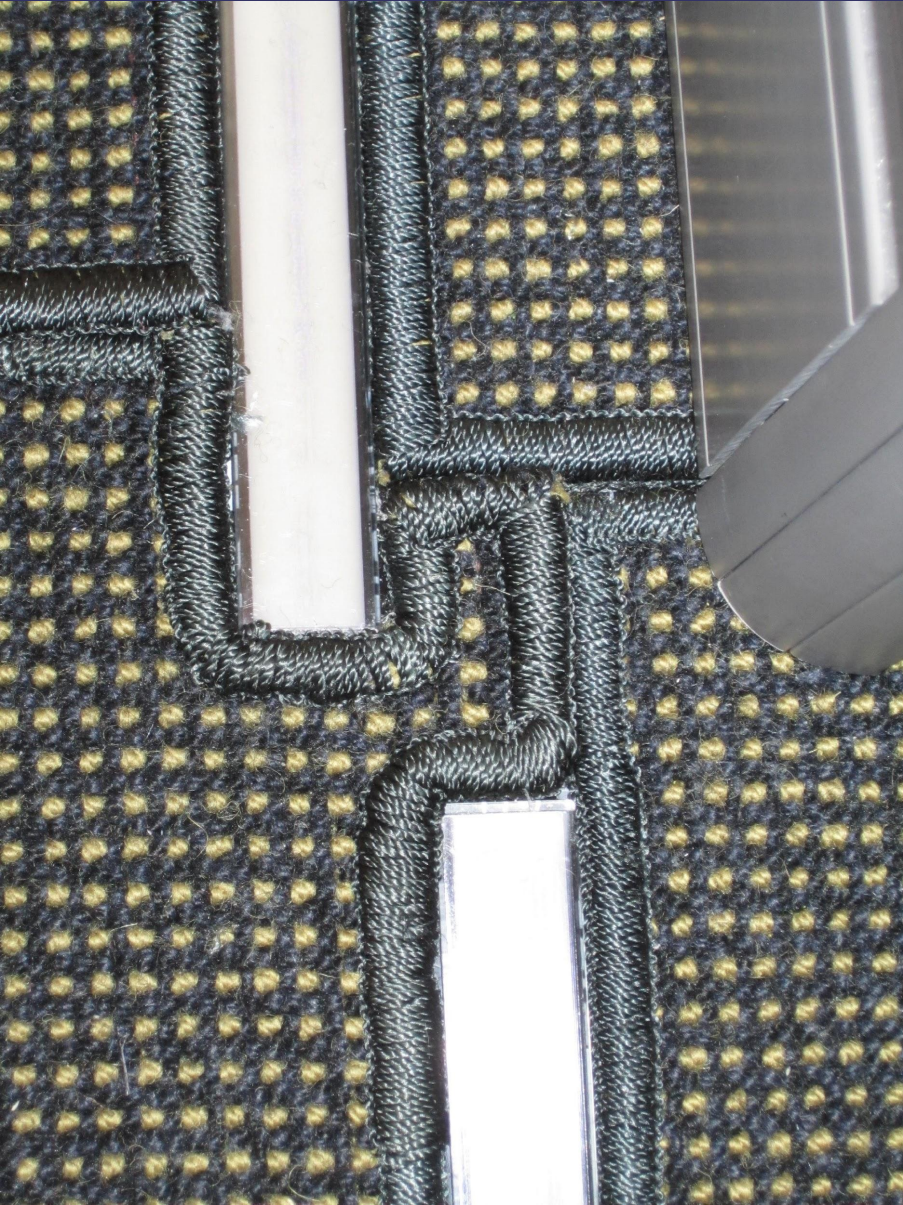
Some customers
choose using of
laminates

- + smooth floor
- heavy
- expensive

Most covered floor



Problems



Closeout Seals

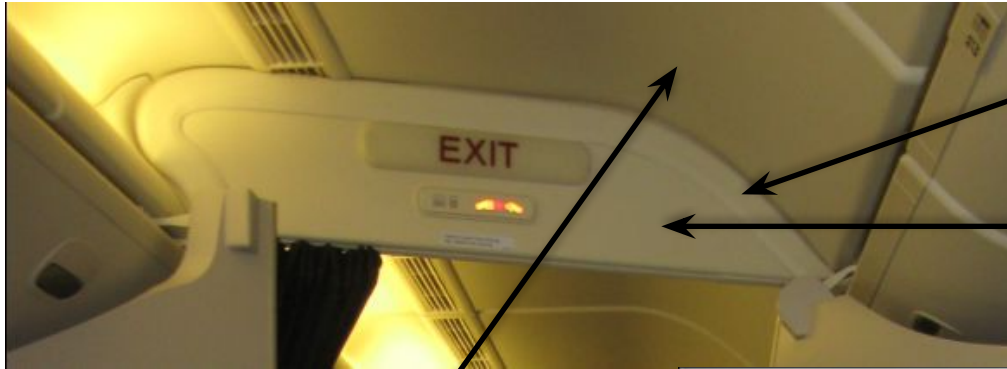
Closeout Seals are plastic and self-skinning foam flexible parts that fill gaps in the airplane interior between Monuments, Sidewalls, Stowage Bins, etc., that can be classified as a trash trap or light leak.

Closeout Seals provide a finished appearance while allowing for airframe flexibility, and manufacturing tolerance and fit up. Closeout Seals typically snap-in-place to pre-installed seal retainers, or sometimes glued in place when required. Closeout Seals are easy to clean. When possible, the Closeout Seal design group participates in the development of the interface to be closed out. Gap Management does not necessarily require 'seals' as the end result, but rather designing gaps such that 'seals' may not be required.

Main functions of closeout seals:

- 1) Fire hazard protection (FAA requirement: areas and gaps in the airplane must be such that trash or debris can be easily removed)
- 2) Aesthetics function (passengers or crew must not view unfinished architecture)

Closeout Seals on a Plane



Light Block Seal

Curtain Header

Ceiling

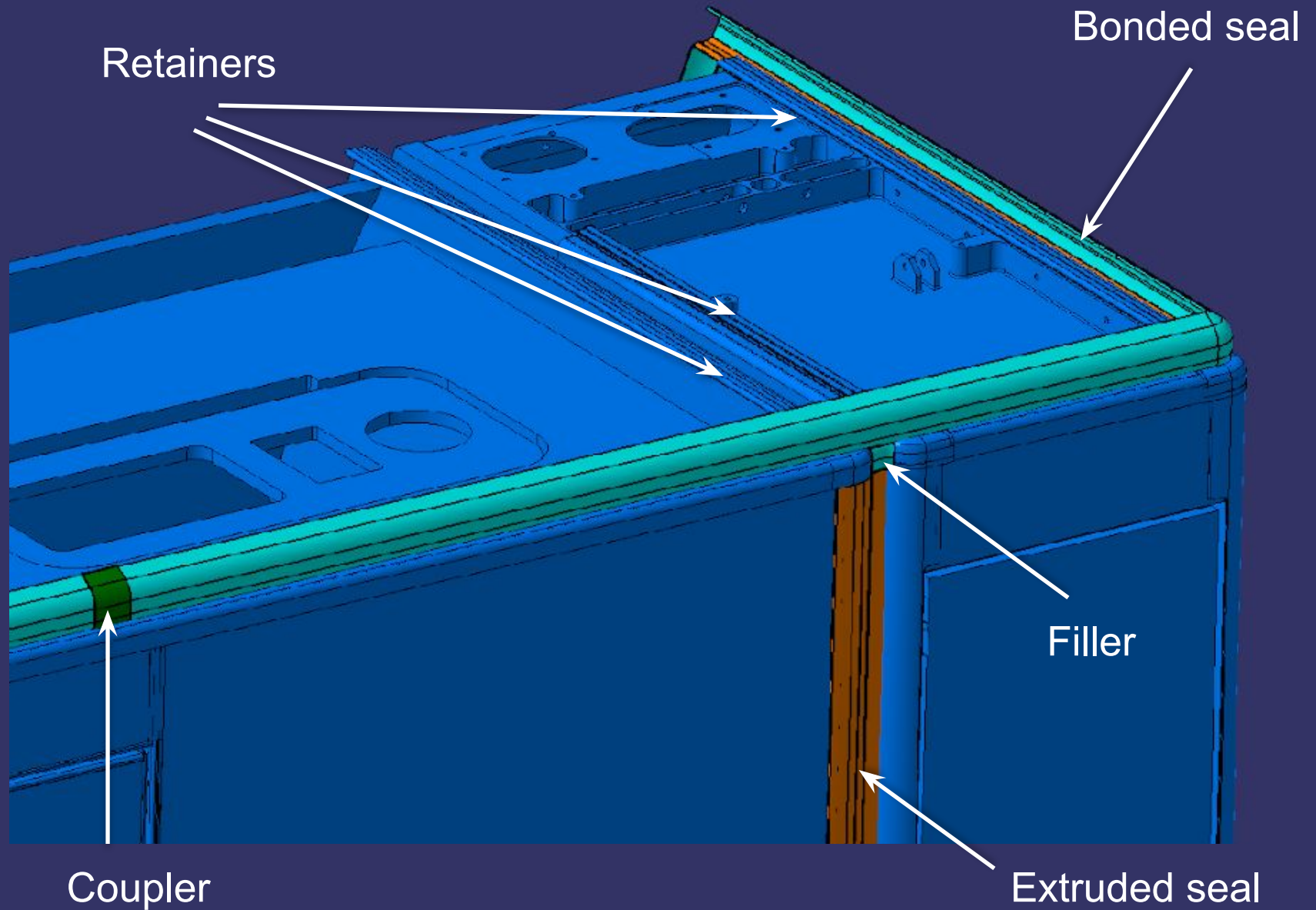
Top Seal

Lavatory

Retainers



Model

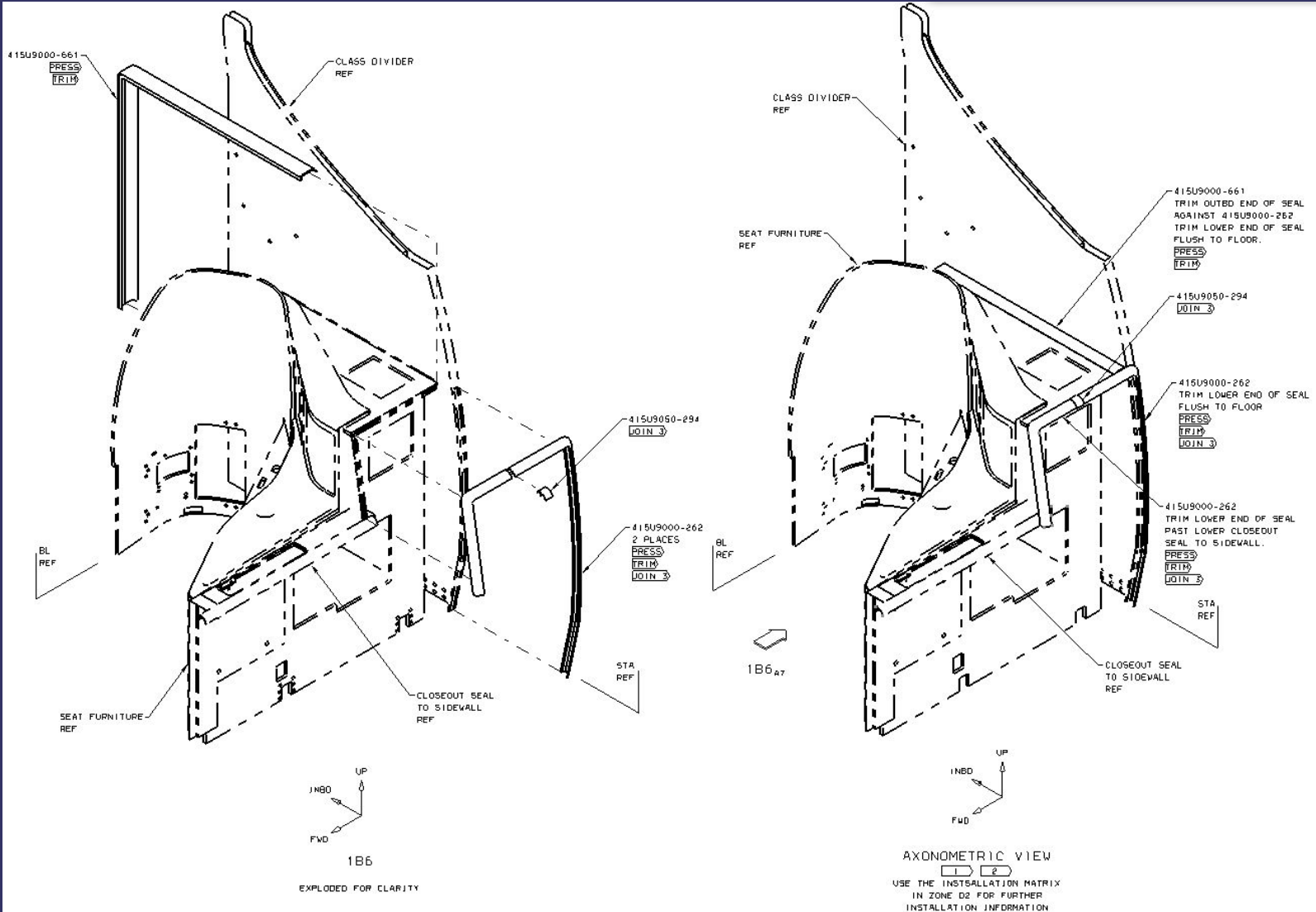


Getting Task

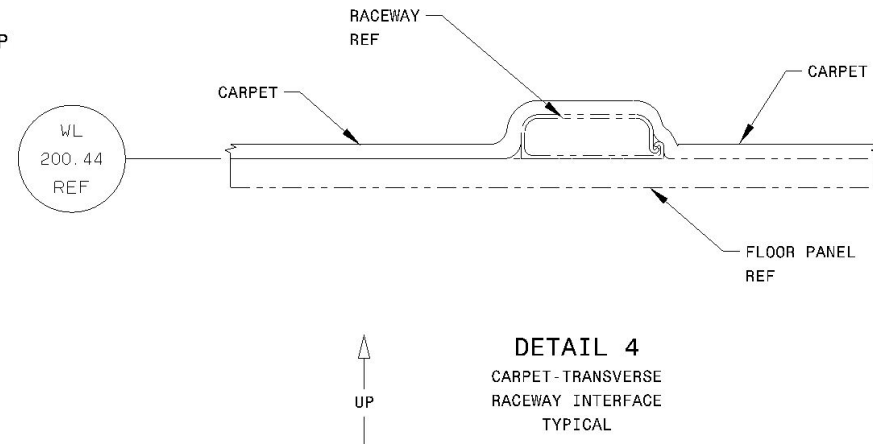
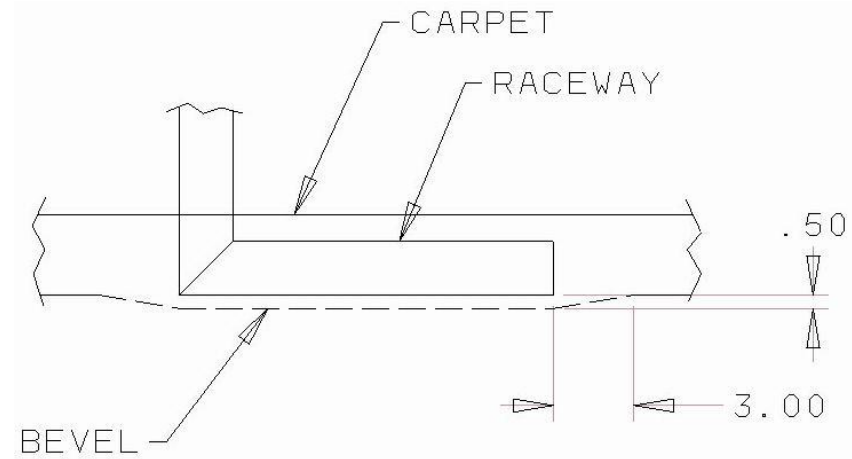
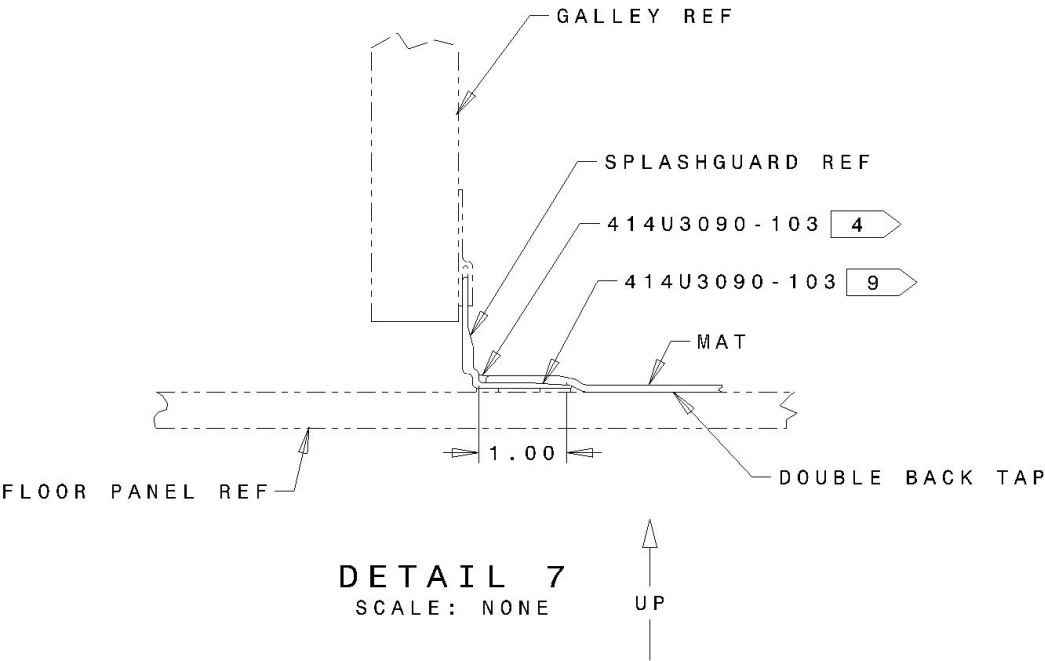
Investigation

Performing:

3D MODEL □ DRAWING □ ENOVIA/PDM



Forms of Installed floor coverings



Thresholds on PS

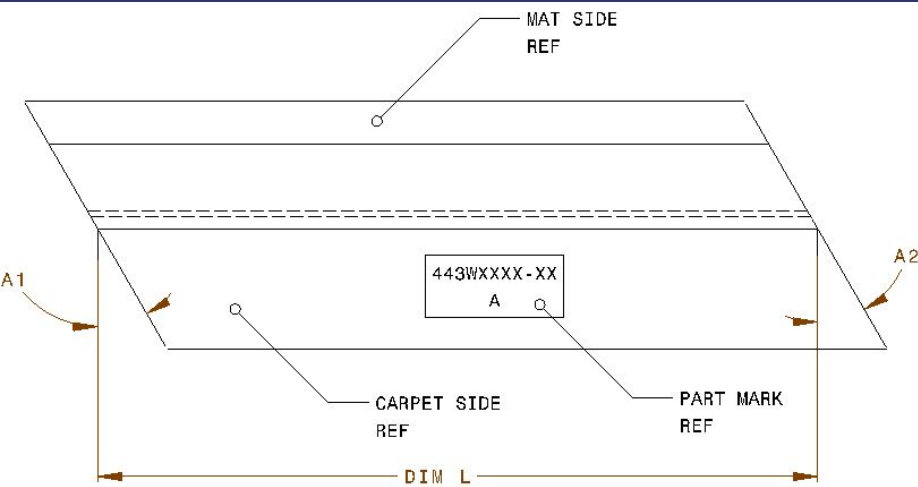


TABLE VIEW

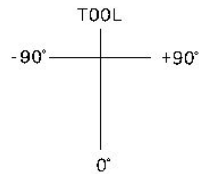


TABLE - SECTION 47
FOR FEEDER LINE USE ONLY

PART NO.	DIM L	A1	A2	QTY
D	24.72	25°	29°	1
E	24.72	-29°	-25°	1

