



TOYOTA COMPANY

Content

- *Information (history)*
- *Production*
- *Activities*
- *Competitors*
- *Model range*



TOYOTA

INFORMATION

- ***Toyota Motor Corporation - largest Japanese automotive corporation. The main office of the company is located in the city of Toyot, Aichi Prefecture (Japan). The company ranks 9th in the Fortune Global 500 (2015). Toyota Motor Corporation is the main member of the Toyota Group. With this company is mainly associated with the brand Toyota. The***

Divisions

- ***Lexus***
- ***Scion (defunct)***
- ***TRD***
- ***DAIHATSU***

Subsidiaries 545

- ***Revenue ¥28.40 trillion (2016)***
- ***Profit ¥2.31 trillion (2016)***

The new headquarters of the Toyota Motor Corporation, opened in February 2005 in Toyota City.



Key people

- Takeshi Uchiyamada (Chairman)
- Shigeru Hayakawa (Vice Chairman)
- Akio Toyoda (President)



• Takeshi Uchiyamada (Chairman)



• Akio Toyoda (President)
Grandson



**Kiichiro
Toyoda**

(1904 - 1955)


- In 1929, Kiichiro Toyoda, son of Sakichi Toyoda, traveled to Europe and the United States to study the automotive industry and in 1930 began to develop cars with a gasoline engine. In 1933 the company for the production of automatic looms Toyoda Automatic

- Toyota Motor Co., Ltd. was founded as an independent company in 1937. Despite the fact that the name of the founders of the company sounds like Toyoda, to simplify the pronunciation and as a symbol of the separation of business activities from family life, the company was decided to give the name "Toyot". In Japan, the name "Toyota" (トヨタ) is considered a better name than "Toyoda" (豊田), since 8 is considered a lucky number, and the word "Toyota", written by katakana, consists of 8 traits.

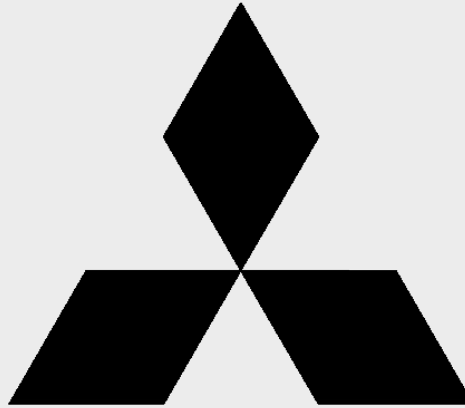
First Toyota model



**Toyota Model
A1, 1935 .**

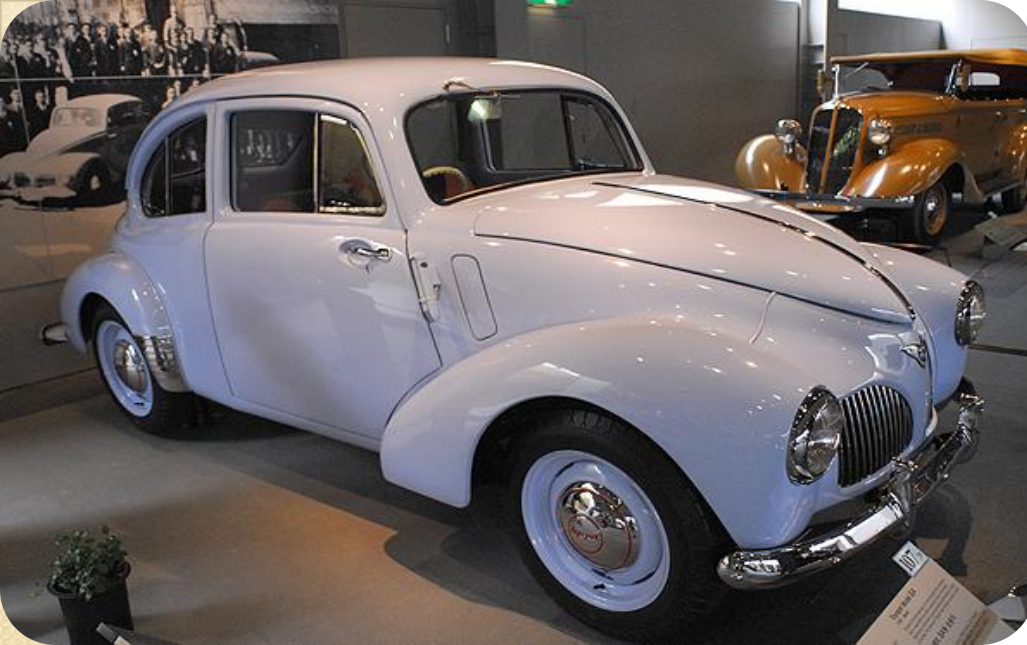
- 
- *The main activity of Toyota Motors Corporation is the production and sale of passenger and commercial vehicles, as well as buses under the brands Toyota, Lexus, Scion, Daihatsu, Hino. USA (Kentucky, 7.5 thousand employees), Canada, (Ontario, 7 thousand employees), Indonesia (Jakarta, 5, 5 thousand employees)*

The main Toyota competitors



MITSUBISHI

MITSUBISHI



***Toyota Model SA
1947***

***Toyota Publica
1961***





**Corolla
1966**

**Celica
1970**





Camry 1982

CAMRY

Lexus LS400 1989





***Toyota Prius
1997***

***Land Cruiser 100
1998***



The latest Toyota models



***Land Cruiser 200
2017***

***Toyota Camry 60
2017***



Toyota Center in Almaty

