



What do you need to do before going on a trip?

There are different forms
of traveling



There are different forms
of traveling



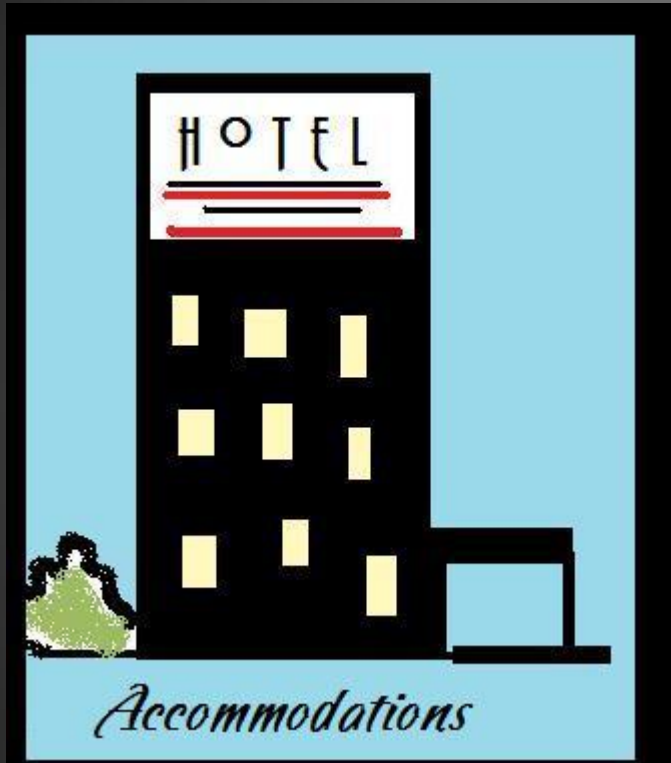
There are different forms
of traveling



Preparations for a trip



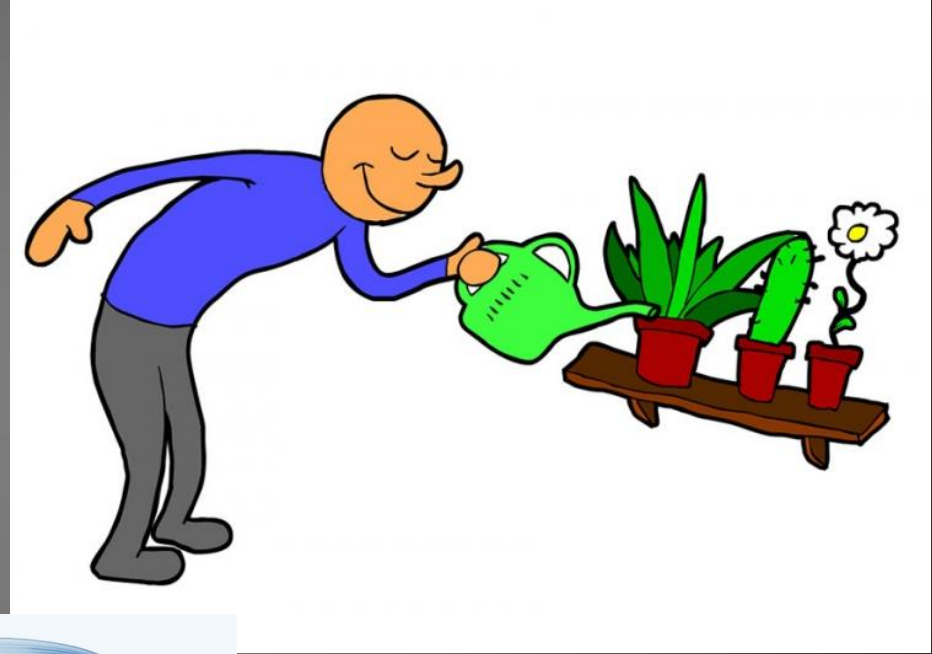
Preparations for a trip



Preparations for a trip



Preparations for a trip



Preparations for a trip



Preparations for a trip

Trail	Date	GWL Mile Point	Landmark	Pace (miles/day)	Segment Length	Days
GAP	9-Apr	0.0	Grandview Point Grand Canyon National Park	31.1	479.1	15.4
	24-Apr	479.1	Parker, AZ Colorado River, AZ-CA state border	32.5	188.5	5.8
	30-Apr	667.6	Morongo Valley, CA W side of Joshua Tree National Park	35.0	236.6	6.8
PCT	6-May	904.2	Agua Dulce, CA	33.6	248.4	7.4
	14-May	1152.6	Kennedy Meadows Start of High Sierra (Sequoia, Kings C, Yosemite)	30.0	391.7	13.1
	27-May	1544.3	Echo Lake Near South Tahoe City	35.2	735.9	20.9
	17-Jun	2280.2	Crater Lake National Park	37.5	320.5	8.5
	25-Jun	2600.7	Cascade Locks, OR Columbia River, OR-WA state border	36.5	246.7	6.8
	2-Jul	2847.4	Snoqualmie Pass (I-90)	36.0	894.0	24.9
PNT	27-Jul	3741.4	Polebridge, MT West side of Glacier National Park	35.0	124.0	3.5
CDT	31-Jul	3865.4	East Glacier, MT End of Glacier NP, start of Bob Marshall Wilderness	34.7	736.6	21.2
	21-Aug	4602.0	Old Faithful Village, WY Yellowstone National Park	35.8	688.6	19.2
	9-Sep	5290.6	Silverthorne, CO (I-70)	33.7	148.0	4.4
	13-Sep	5438.6	Monarch Pass (Salida, CO) Start of Cochetopa Hills then San Juan's	32.5	410.2	12.6
	26-Sep	5848.8	Cuba, NM First town south of San Juan's and San Pedro Peaks	34.0	474.6	13.9
GET	10-Oct	6323.4	Safford, AZ	32.5	211.8	6.5
AZT	16-Oct	6535.2	Roosevelt Lake Marain Closest access to Phoenix	35.0	222.0	6.3
	23-Oct	6757.2	Flagstaff, AZ Last resupply!	35.0	93.7	2.7
AZT	26-Oct	6850.9	Grandview Point	-	-	-
TOTALS & AVERAGES				34.3	6850.9	200.0

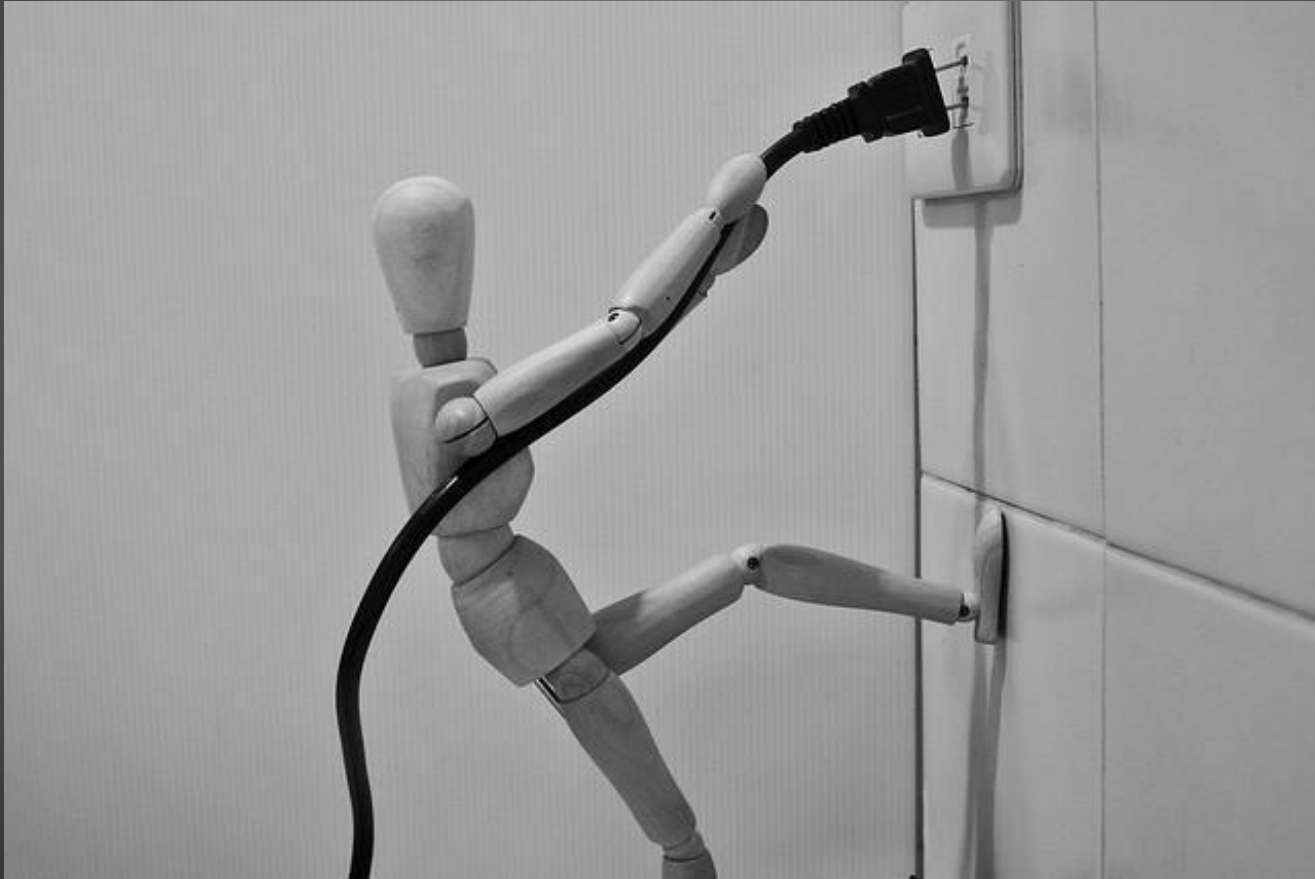
Preparations for a trip



Preparations for a trip



Preparations for a trip



Have a nice trip!

