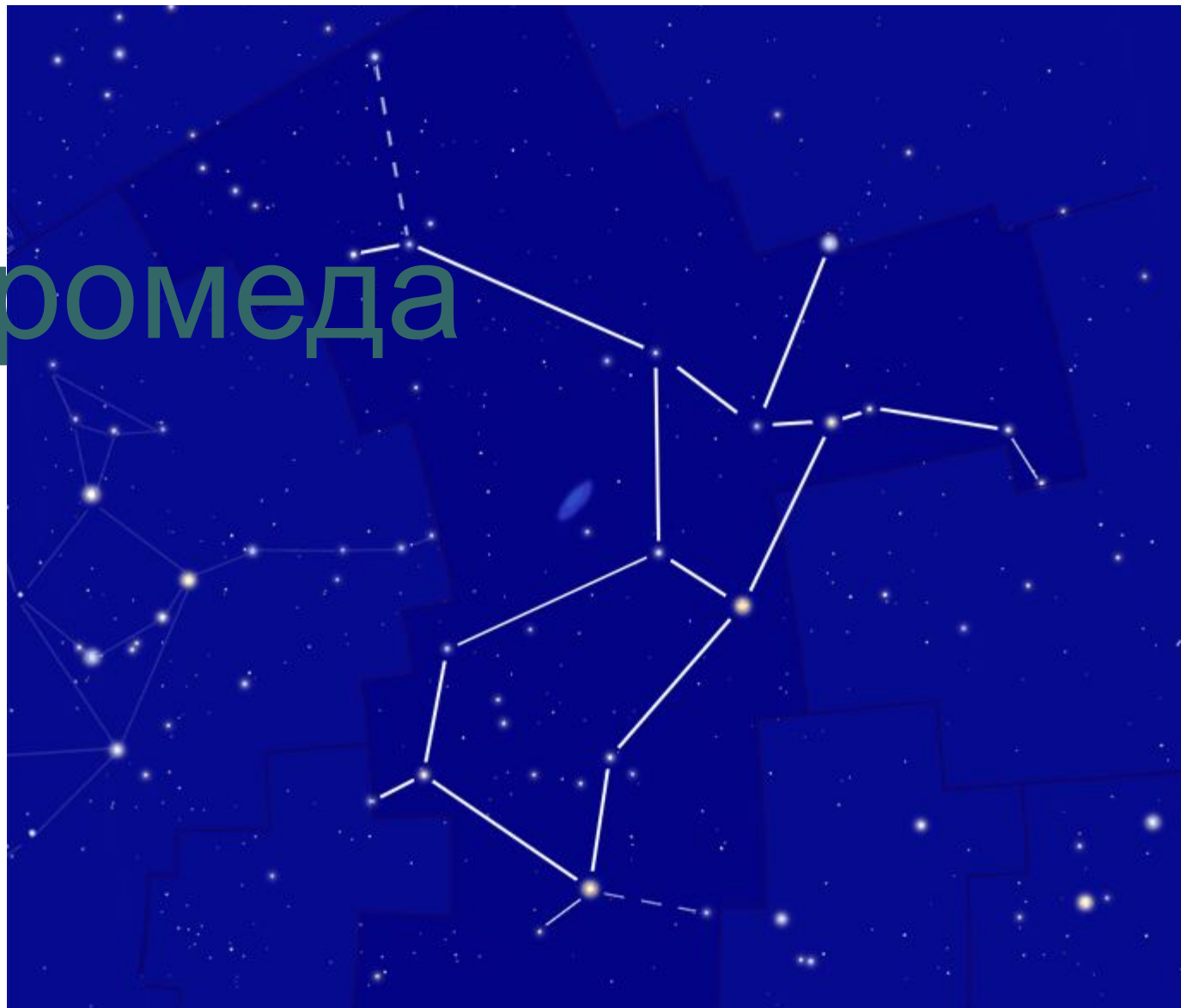


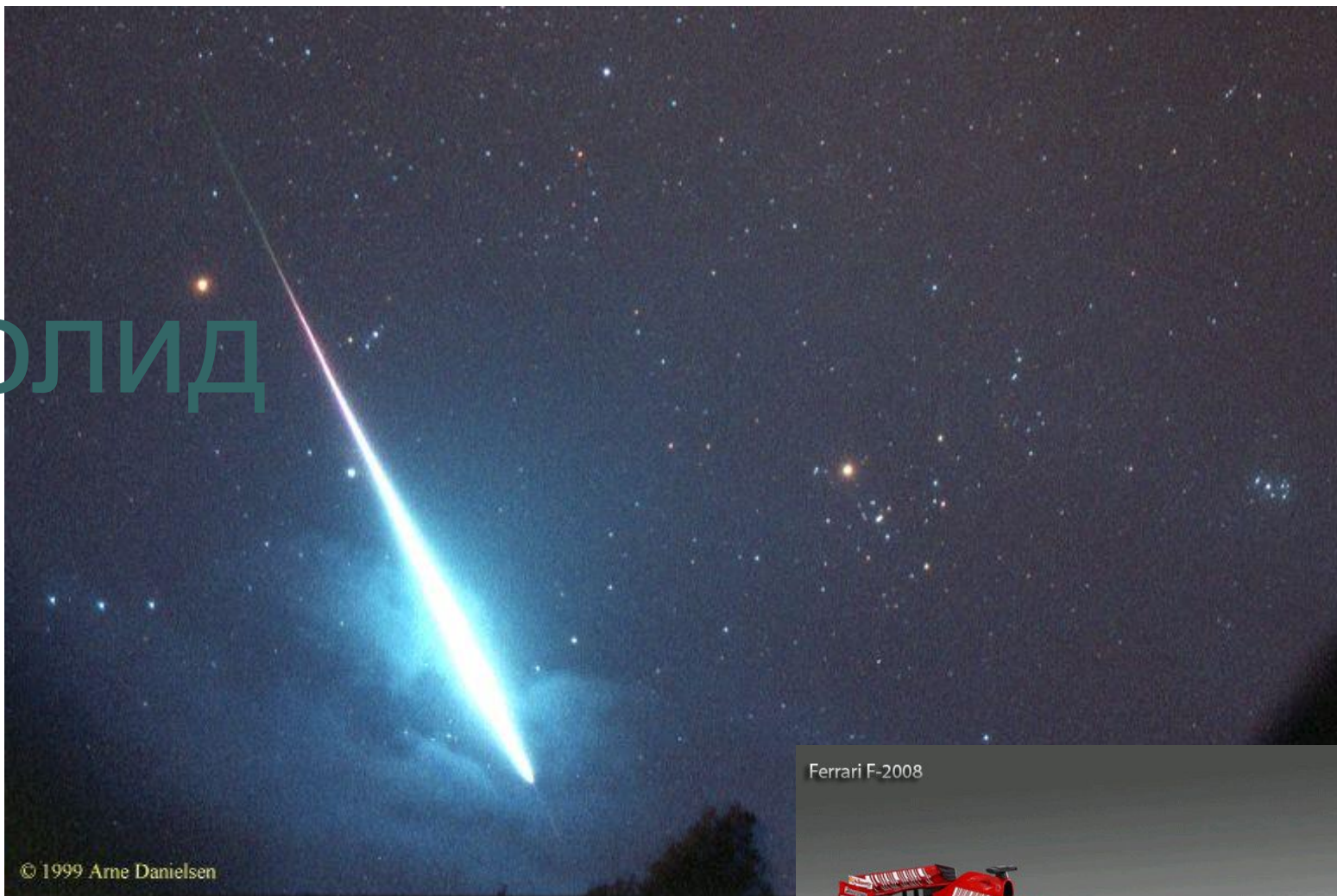


# Андромеда





# Б о л и д



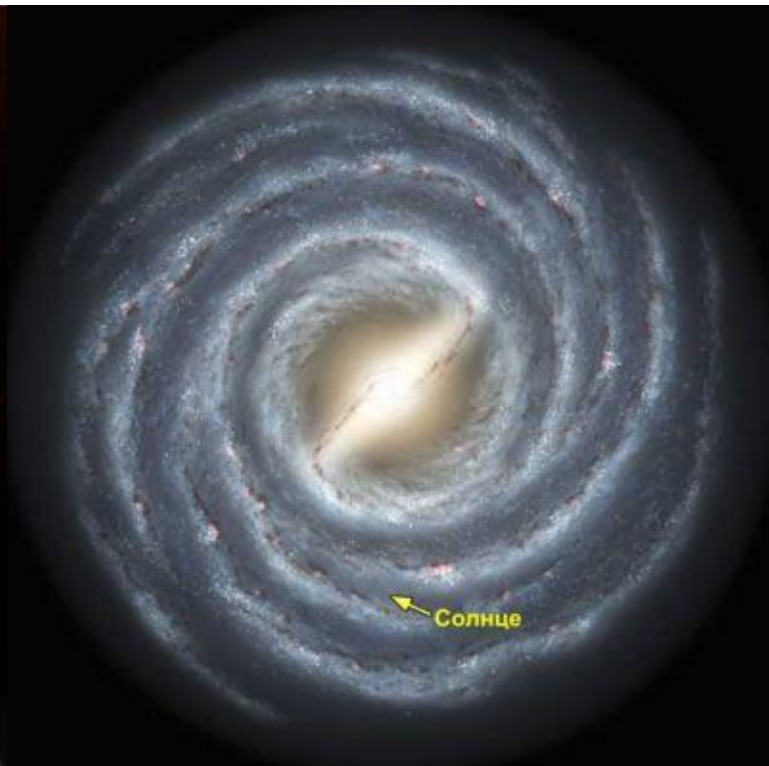


# В

# ерхние



Галактика





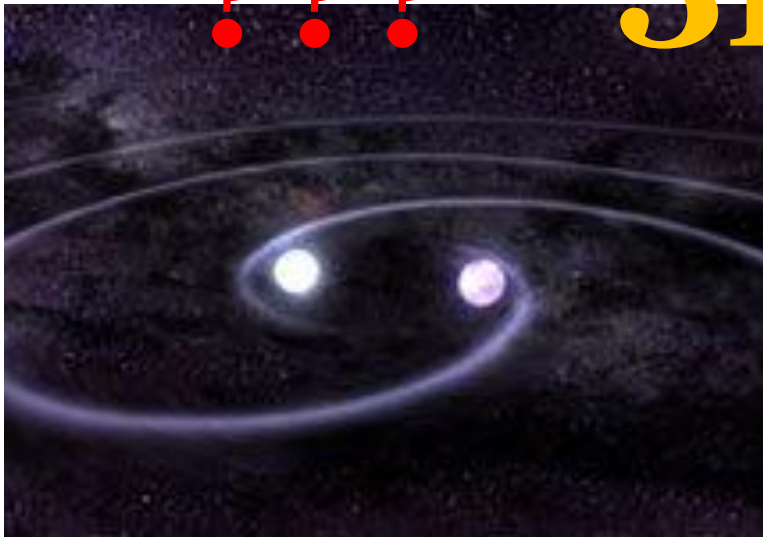
ДВОЙНЫЕ

Д



???

ЗВЁЗДЫ

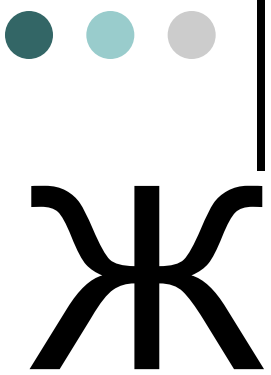




Е

ДИНОРОГ



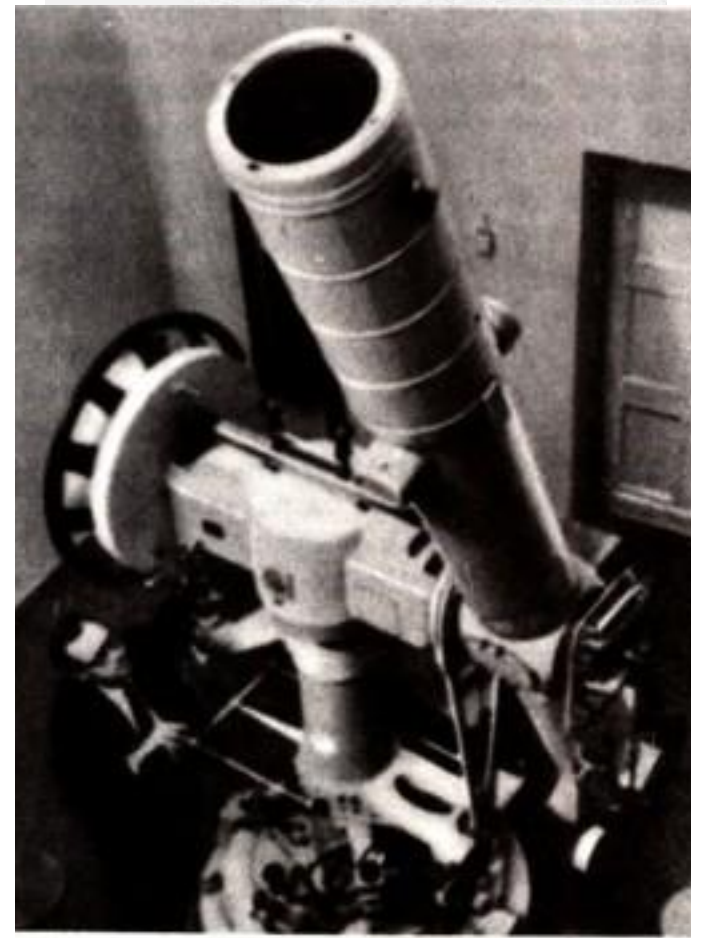
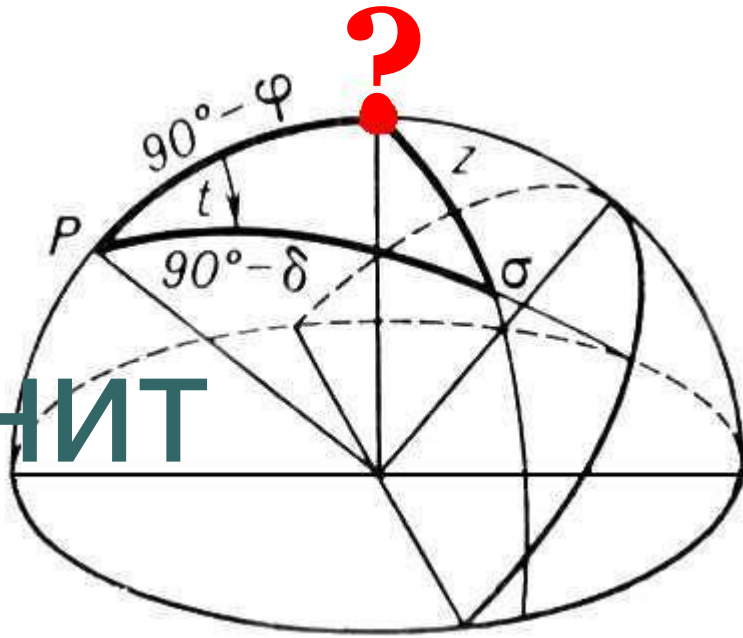


# Железный метеорит





# Зенит

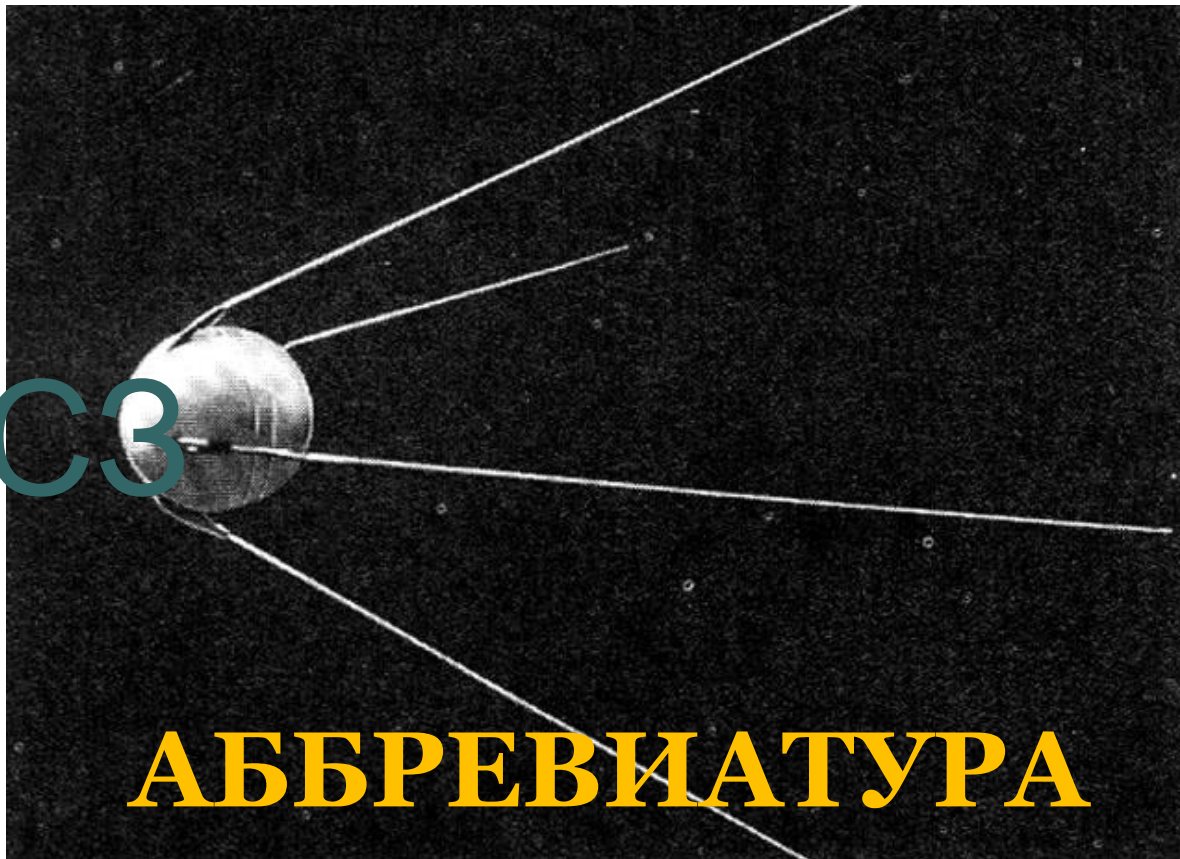






И

СЗ



**АББРЕВИАТУРА**





# Комета



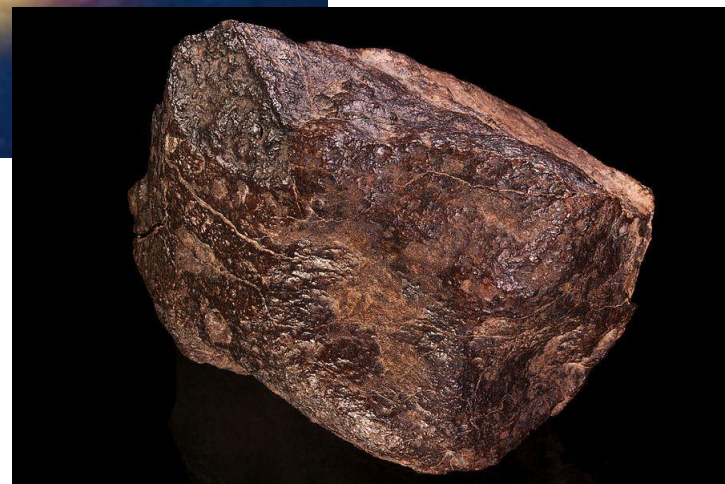


# Луна





# Метеорит





# Наблюдение





# О бсерватория



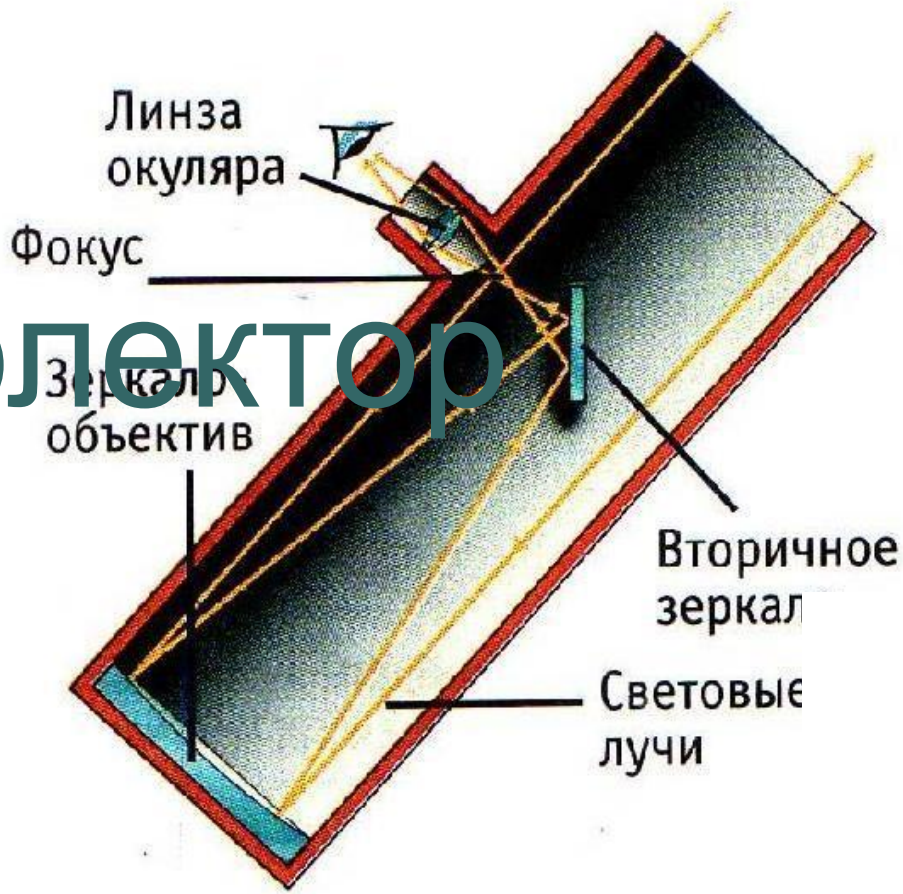


# Полярная звезда





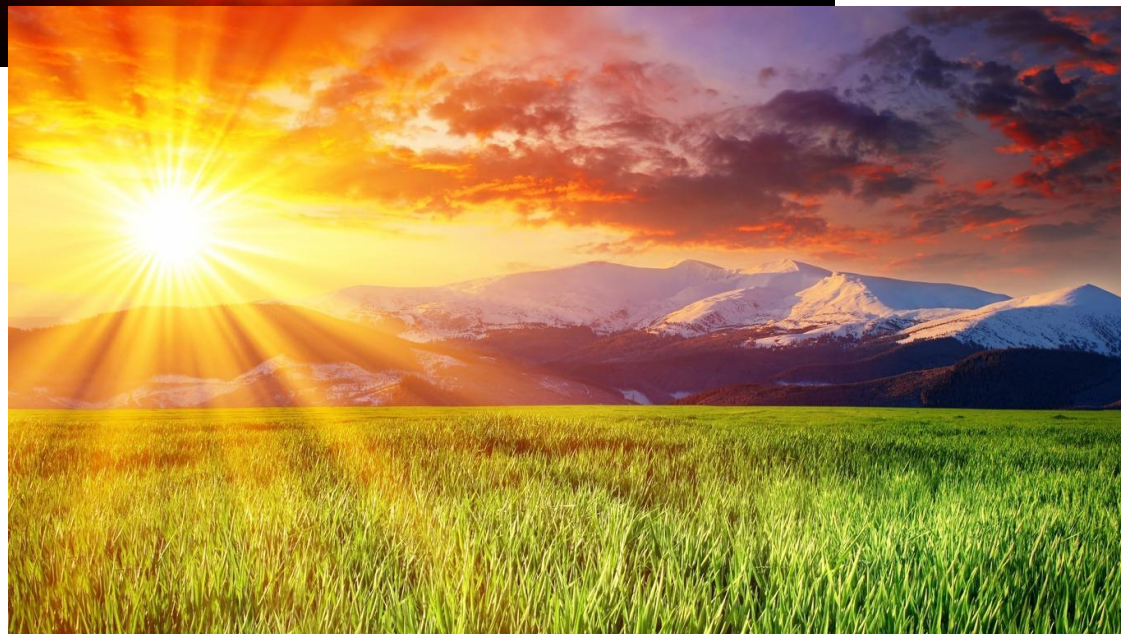
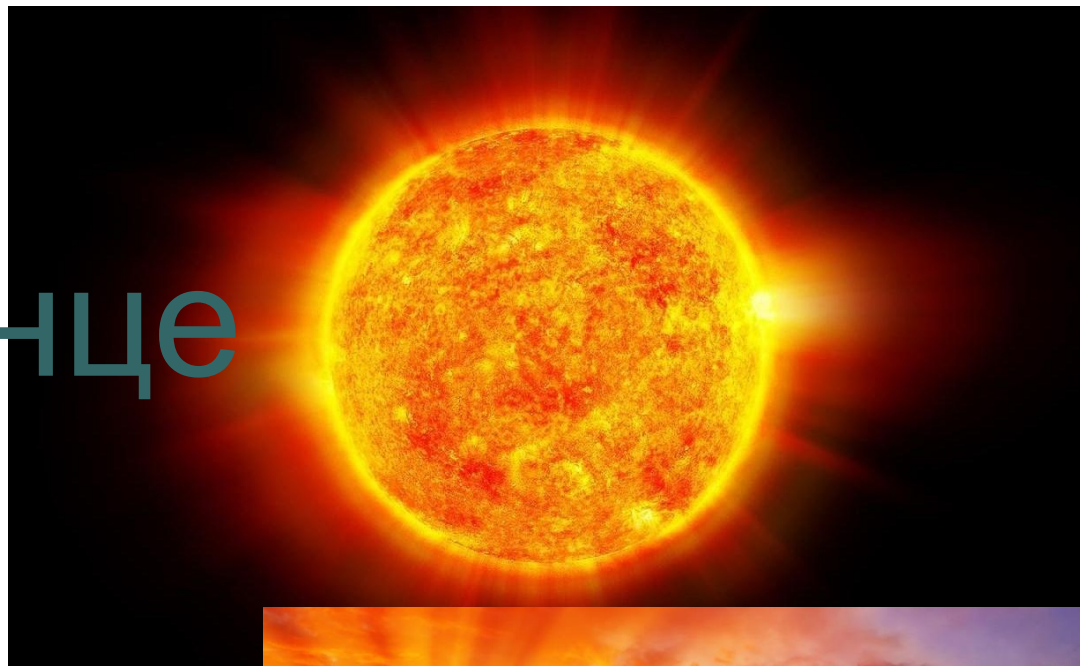
# Рефлектор





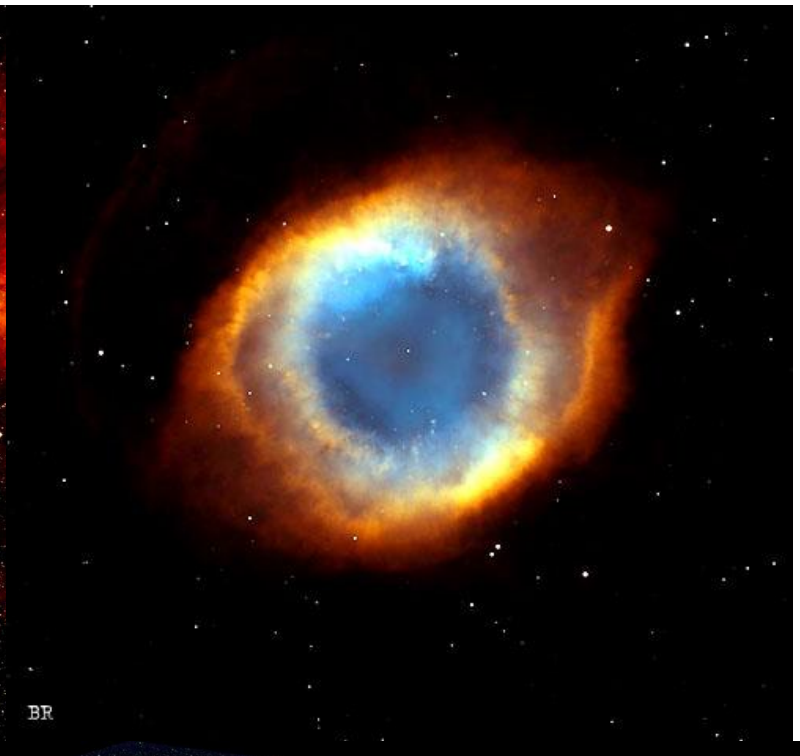


# Солнце

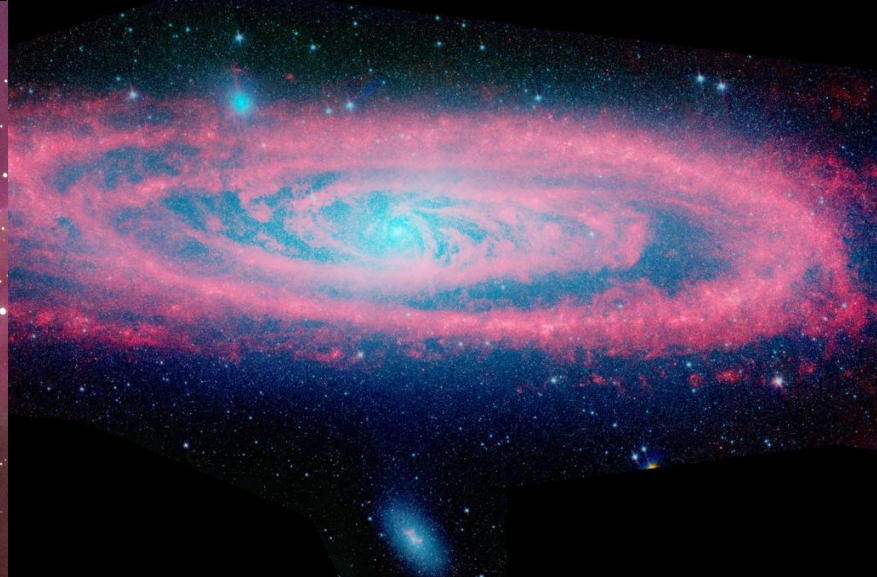




# Туманность

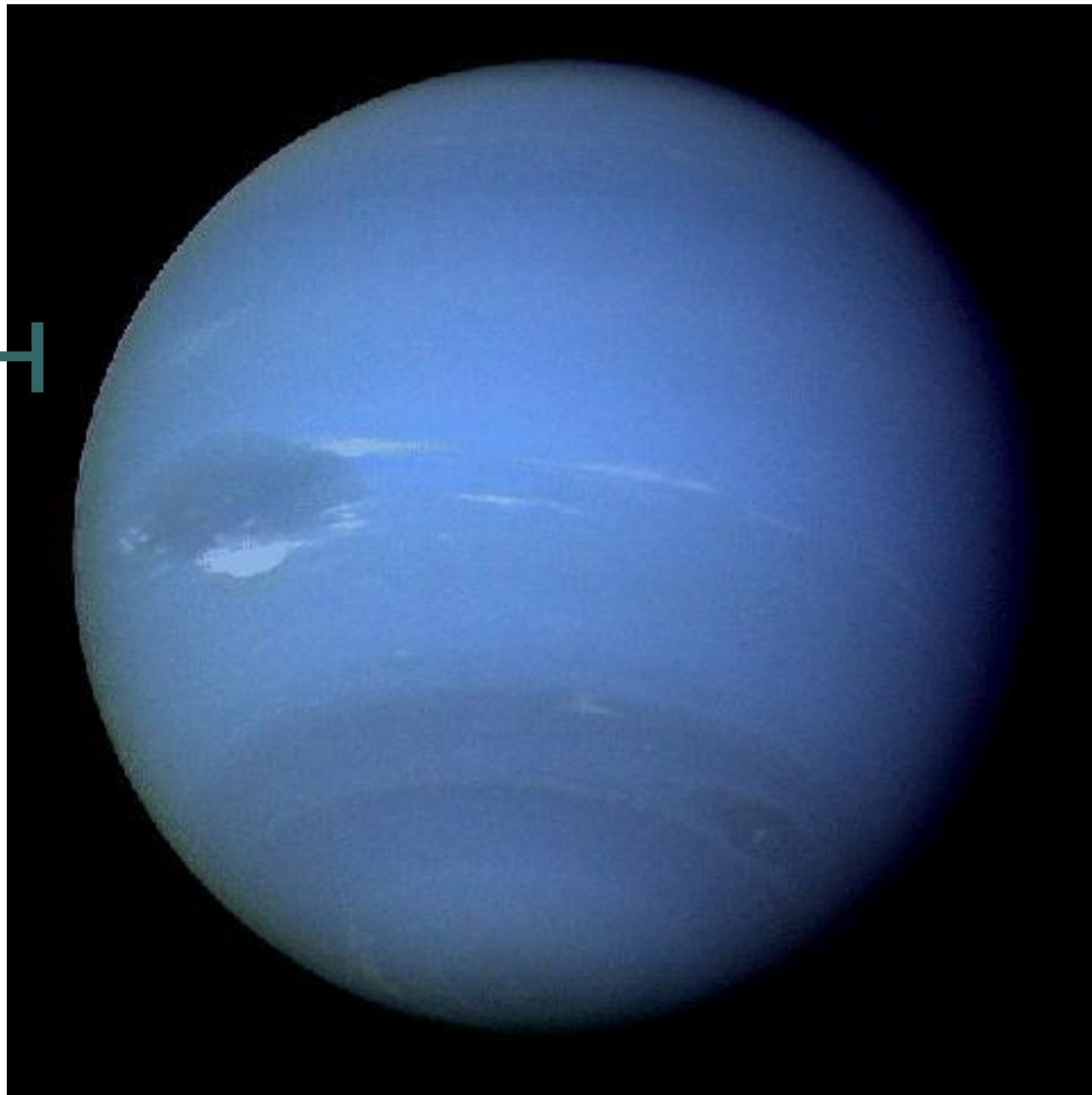


BR



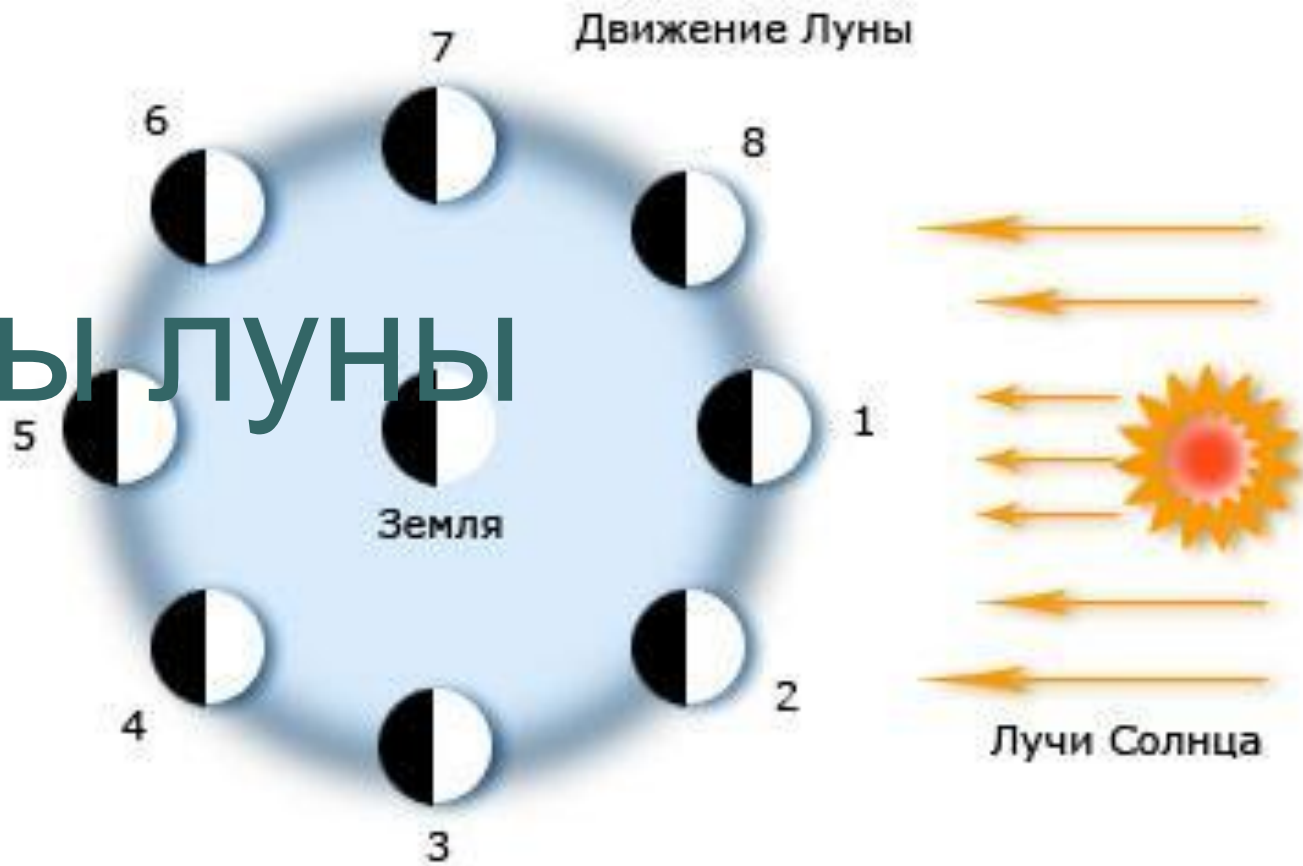


Уран





# Фазы луны

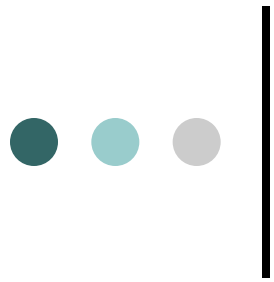


Вид Луны для земного наблюдателя





Хаббл

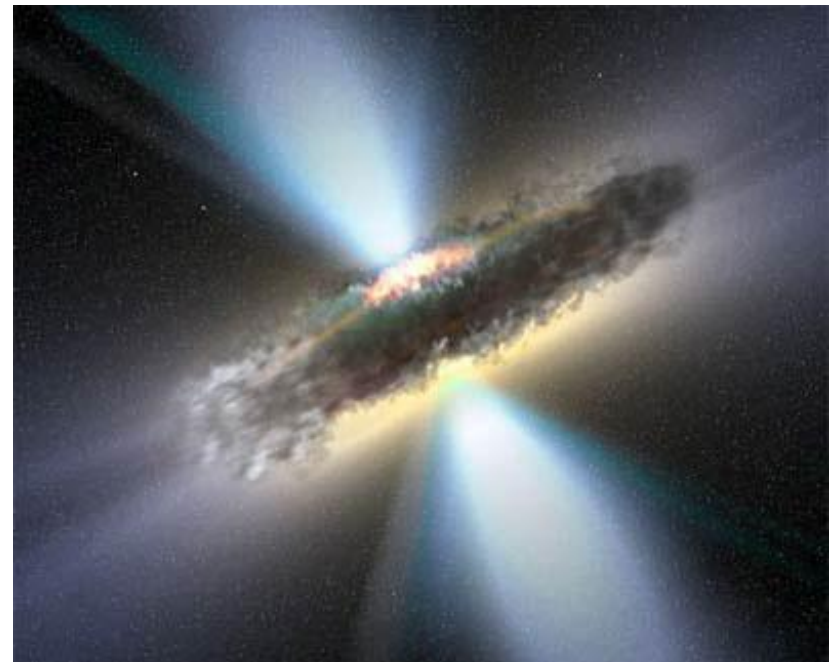
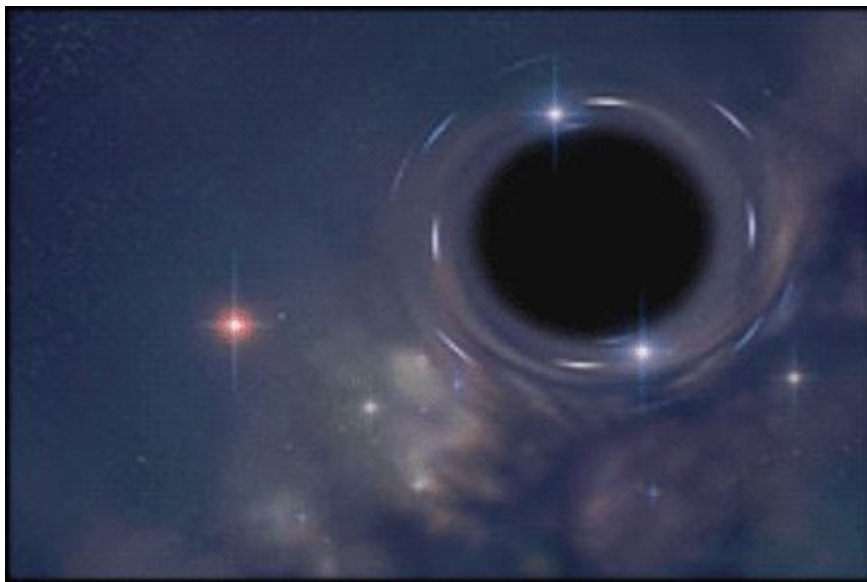
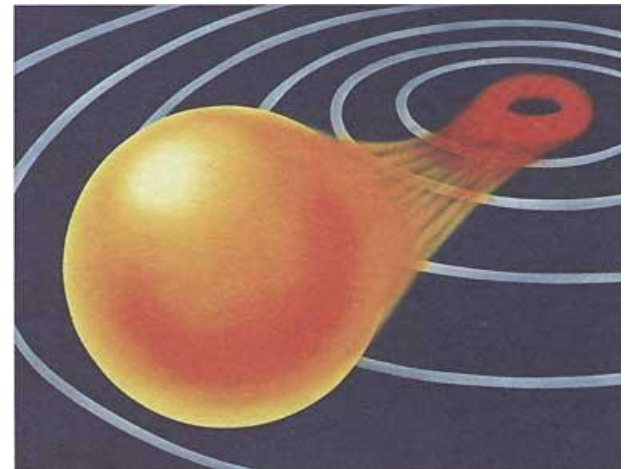


# Цефеи





# Чёрная дыра





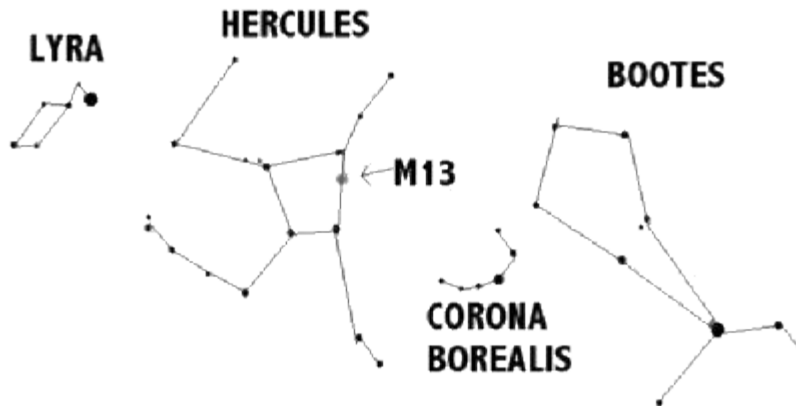
Ш

аровая галактика



???

ЗВЁЗДНОЕ  
СКОПЛЕНИЕ

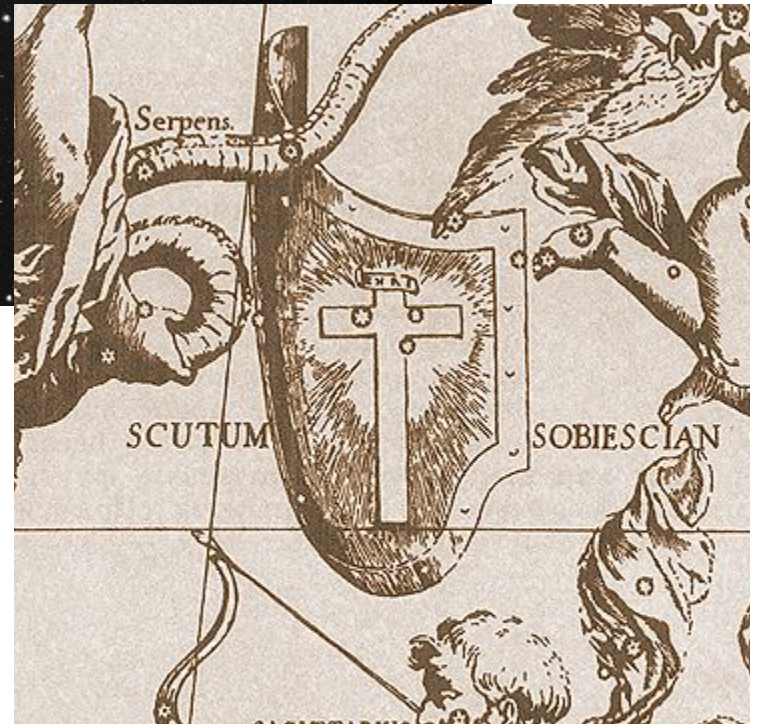






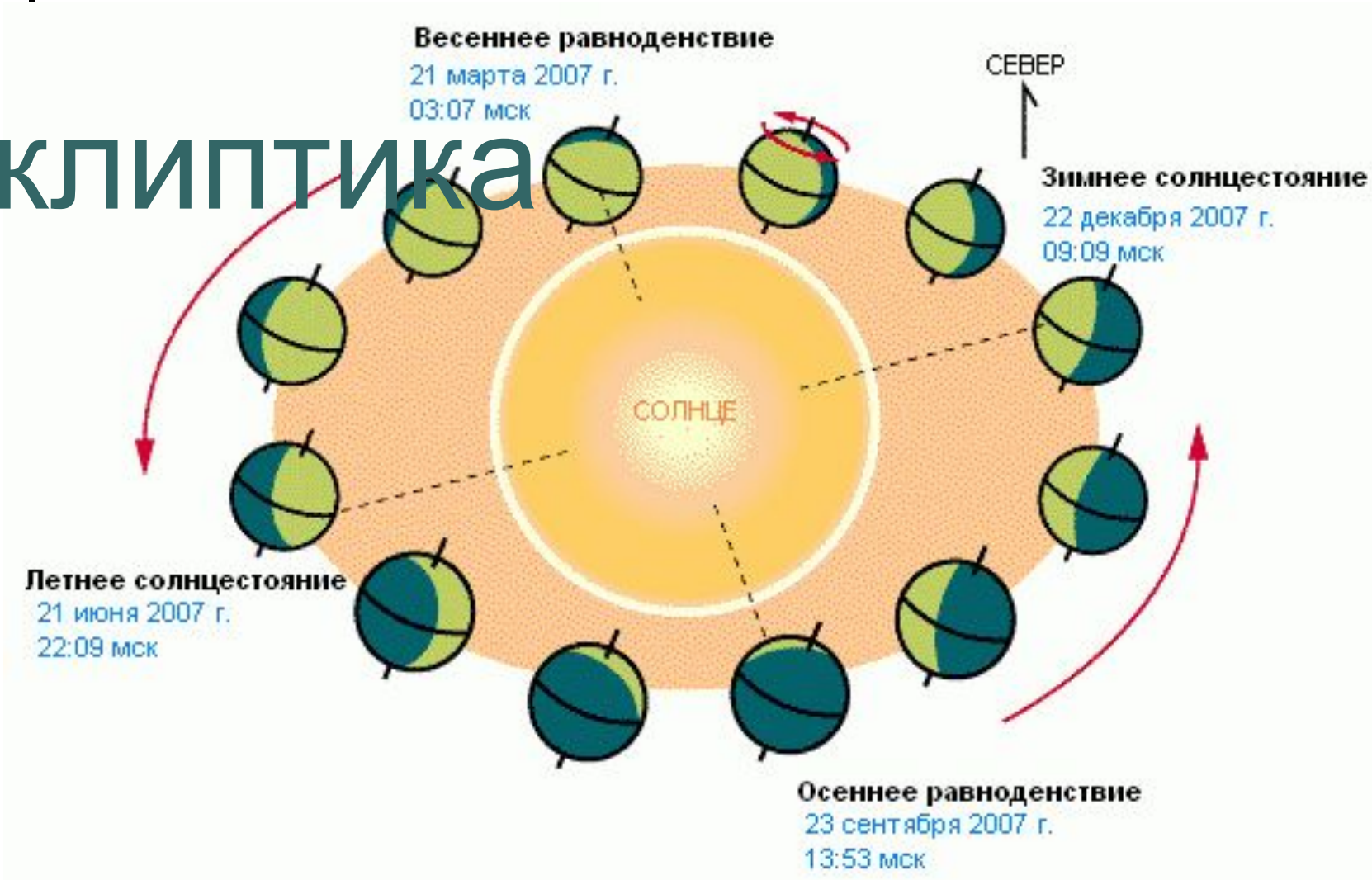
Щ

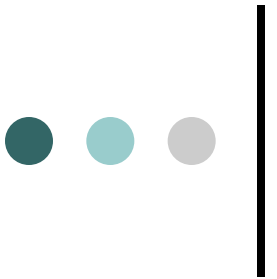
# ИТ (СОЗВЕЗДИЕ СКИТУМ)





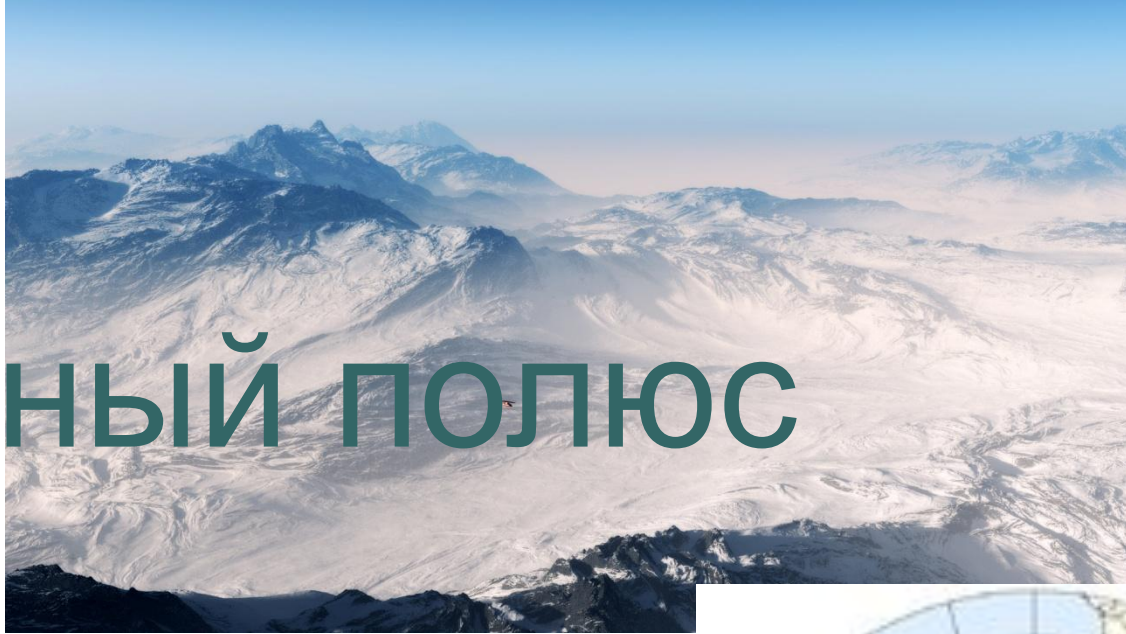
# Эклиптика





Ю

ЖНЫЙ ПОЛЮС



• • • |  
Ядро

