



# Khvalynsk – native land

---

COMPLETED: BYKOV DENIS

GROUP: 21102

*A city in the Saratov region of Russia, the administrative center of the Khvalynsky district.*

*Population - 12143 people .*

*Area: 46 km<sup>2</sup>*

*Date of foundation: 1556*



# GENERAL INFORMATION

*In 1606, the entire settlement was moved to the site of present-day Khvalynsk and became known as Sosnovy Ostrov, the settlement received the status of a county town and was renamed Khvalynsk.*

*In the 18-19 centuries Khvalynsk was known as a local center of trade in bread and agricultural products*

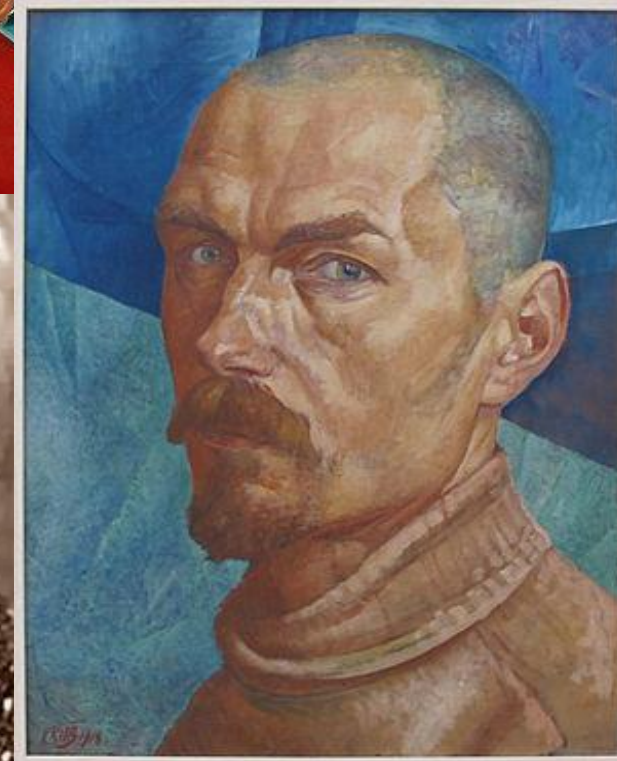
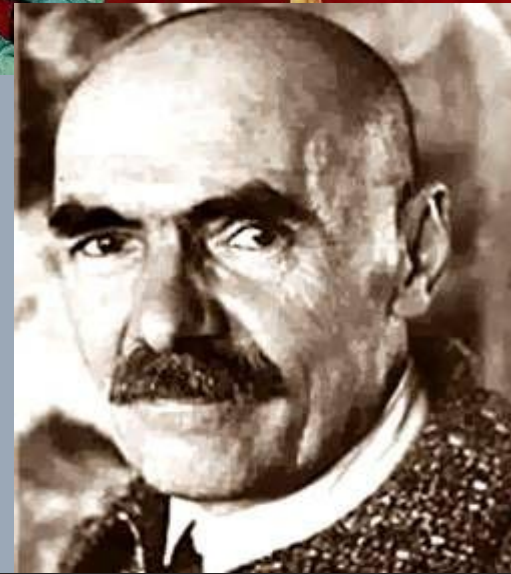


# HISTORY

*Khvalynsk is the birthplace of the artist **Kuzma Petrov-Vodkin**, whose museum was established in the city in 1995. "Bathing of the Red Horse", which is now in the State Tretyakov Gallery on Krymsky Val.*



***Vyacheslav Petrovich Radishchev** is a Soviet inorganic chemist.*



**FAMOUS PEOPLE AND  
CULTURE**

## **Food**

*In the city there is a butter factory — a producer of dairy, fermented milk products and butter, a plant of canned vegetables and fruit "Cheremshanskoe" and a dumpling factory. The plant for the production of vegetable oils is used today only an elevator.*

## **Building materials**

*A brick factory operated in the city.*

## **Tourism**

*An important component of the economy of modern Khvalynsk is the tourism sector. The tourist flow to the city comes not only from the Saratov region, but also from other regions of Russia. Khvalynsky National Park with a ski resort located on its territory is located not far from the city.*



# ECONOMY

## **Food**

*In the city there is a butter factory — a producer of dairy, fermented milk products and butter, a plant of canned vegetables and fruit "Cheremshanskoe" and a dumpling factory. The plant for the production of vegetable oils is used today only an elevator.*

## **Building materials**

*A brick factory operated in the city.*

## **Tourism**

*An important component of the economy of modern Khvalynsk is the tourism sector. The tourist flow to the city comes not only from the Saratov region, but also from other regions of Russia. Khvalynsky National Park with a ski resort located on its territory is located not far from the city.*



# ECONOMY

*- In the film Operation "Y" and other adventures of Shurik, in the novella The Partner, the foreman performed by Mikhail Pugovkin mentioned the city of Khvalynsk in conversation*

*- Khvalynsk was used by Nikolai Gogol as a setting for the play "The Inspector".*

*- the film "The Enchanted Wanderer" starring Alexander Mikhailov was filmed in the expanses of the Khvalyn Mountains.*



# INTERESTING FACTS

---

СПАСИБО ЗА  
ВНИМАНИЕ !



Список литературы:

<https://en.wikipedia.org/wiki/Khvalynsk>

[https://en.wikipedia.org/wiki/Kuzma Petrov-Vodkin](https://en.wikipedia.org/wiki/Kuzma_Petrov-Vodkin)

[https://ru.wikipedia.org/wiki/Хвалынский национальный парк](https://ru.wikipedia.org/wiki/Хвалынский_национальный_парк)