



The Australian Labor Party

The presentation is made by

Alina Korytnaya
the group : 21-KA



A large red rectangular box with a white drop shadow is positioned in the lower center of the slide. The word "Labor" is written in a large, white, bold, sans-serif font across the center of the red box.



Labor




-
- The Australian Labor Party (ALP), also simply known as Labor and historically spelt Labour, is a major centre-left political party in Australia. The party has been in opposition at the federal level since the 2013 federal election. The party is a federal party with branches in each state and territory.

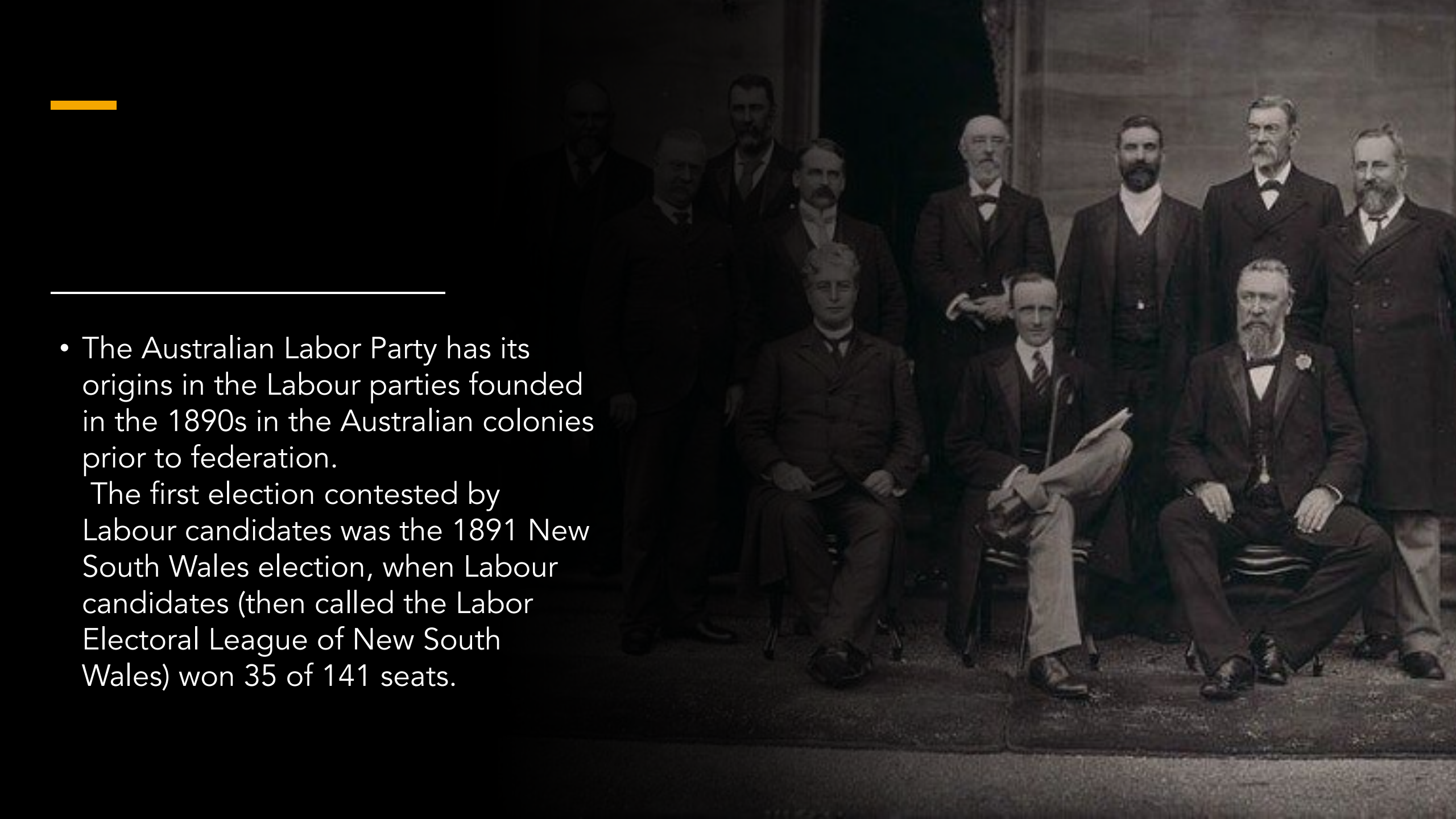


-
- The party competes against the Liberal / National Coalition for political office at the federal, state and sometimes local levels. It is the oldest political party in Australia. Labor's current National Platform describes the party as "a modern social democratic party".

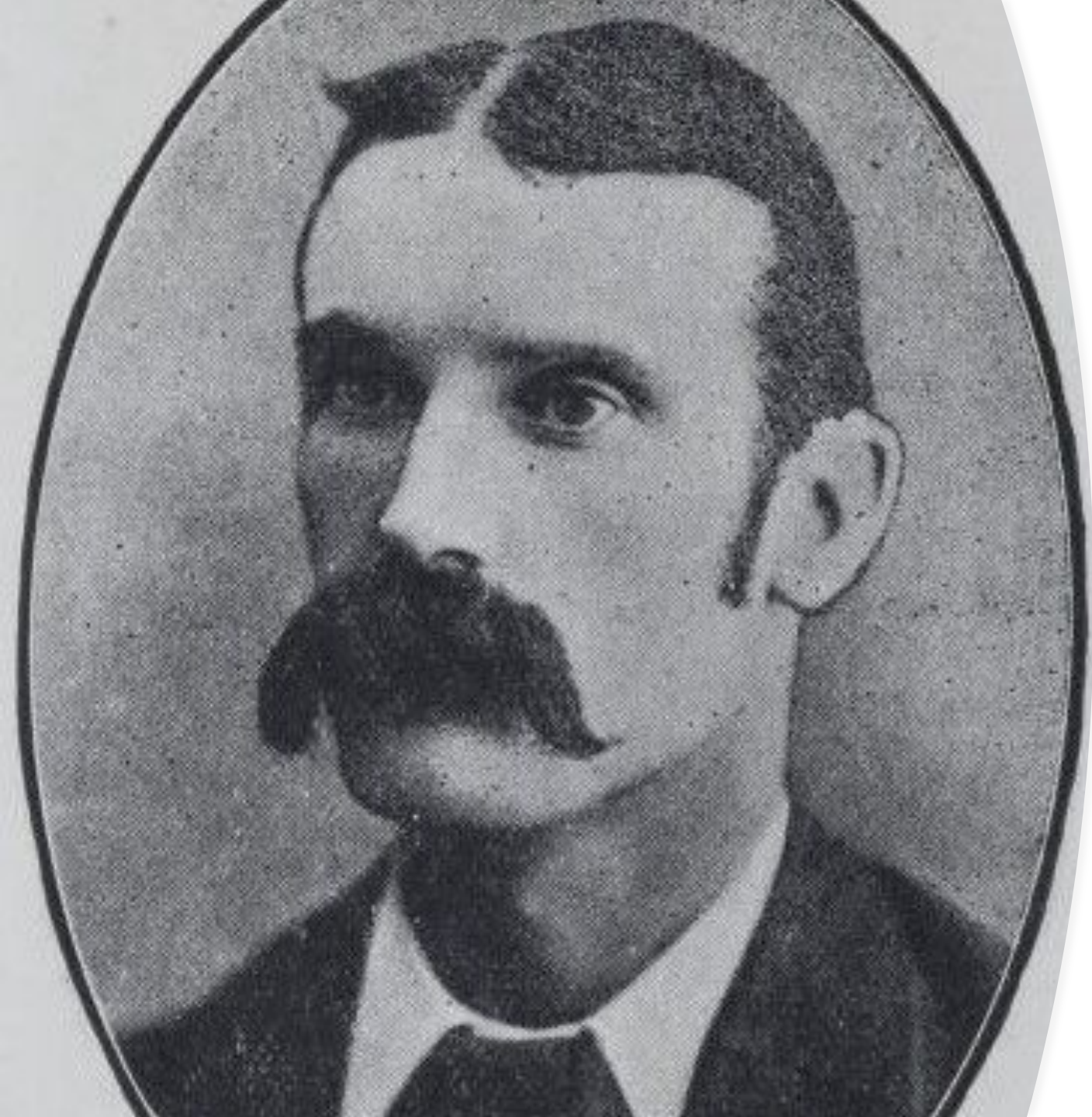
-
- The ALP was not founded as a federal party until after the first sitting of the Australian Parliament in 1901. Nevertheless, it is considered as descended from labor parties founded in the various Australian colonies by the emerging labor movement in Australia, formally beginning in 1891.




- 
- The ALP formed the world's first labor party government as well as the world's first social democratic government at a national level. Labor was the first party in Australia to win a majority in either house of the Australian Parliament, at the 1910 federal election.

- 
-
- The Australian Labor Party has its origins in the Labour parties founded in the 1890s in the Australian colonies prior to federation.

The first election contested by Labour candidates was the 1891 New South Wales election, when Labour candidates (then called the Labor Electoral League of New South Wales) won 35 of 141 seats.



-
- The United Labor Party (ULP) of South Australia was founded in 1891, and three candidates were that year elected to the South Australian Legislative Council. The first successful South Australian House of Assembly candidate was John McPherson at the 1892 East Adelaide by-election.

- 
-
- Anthony Albanese is the leader of the federal Labor party, serving since 30 May 2019. The deputy leader is Richard Marles, also serving since 30 May 2019.

Australian
Labor



A New Way

Building for
the Future

-
- The Australian Labor Party is beginning to formally recognise single interest groups within the party. The national platform currently encourages state branches to formally establish these groups known as policy action caucuses. Examples of such groups include the Labor Environment Action Network, Rainbow Labor, and Labor for Refugees.





-
- The Labor Party has always had a left wing and a right wing, but since the 1970s it has been organised into formal factions, to which party members may belong and often pay an additional membership fee. The two largest factions are Labor Unity (National Right) and the Socialist Left (National Left).



—

Thanks for
your
attention!

Aust
Labo

A Ne

Building f
the Future

