

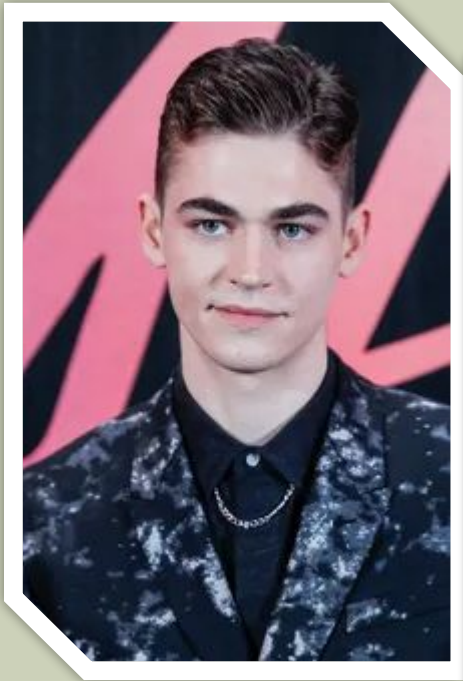
FIENNES-TIFFIN, HIRO



Nadia Yudina

WHAT TIME DOES IT GET UP

- Fiennes-Tiffin, Hiro gets up very early . Sometimes even before sunrise. He's a morning person .





WORK

Even though he still gets up for work, he's still late. He gets to work in his .But he works very hard. 8-9 hours a day own car.

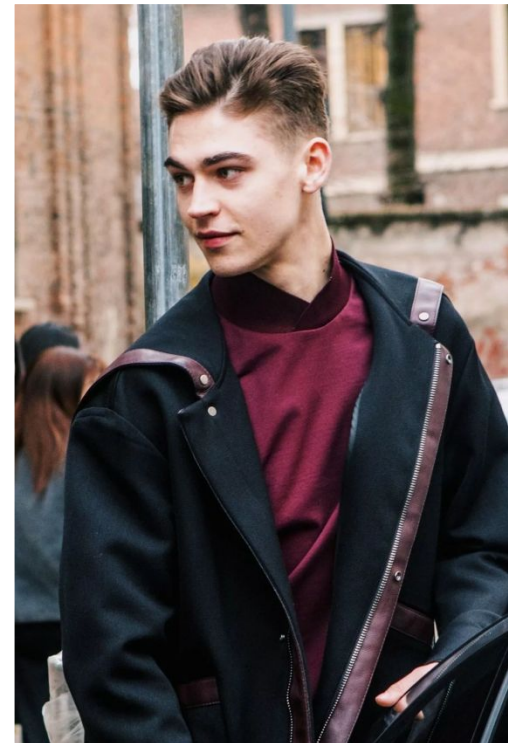
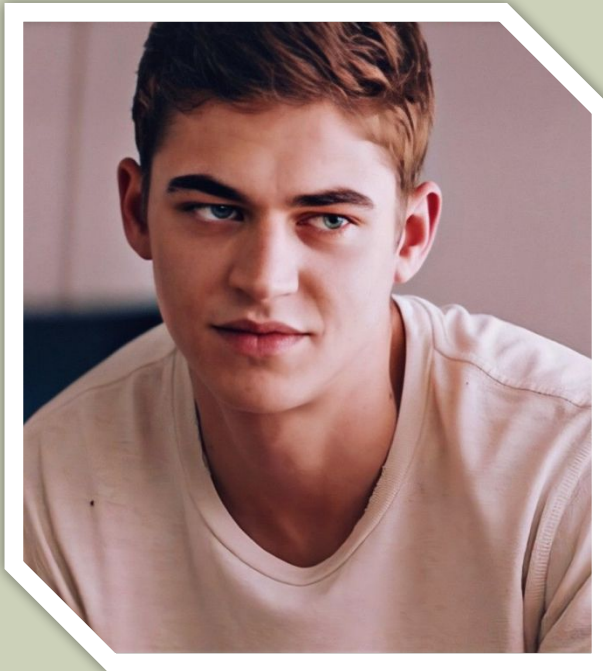
WHEN AND WHERE DOES HE EAT

During breaks, he goes to a cafe and sometimes can look into a restaurant. He usually eats Breakfast and dinner at home . But sometimes you can go to coffee



WHAT DOES HE DO AFTER WORK

After work, he usually goes home. Sometimes you can spend time with friends go to a movie or restaurant spend time with colleagues
At home, he can watch a movie or play games or do work around the house .





WHAT TIME DO I GO TO BED

He does not go to bed so early at 10-11 am. But if you really are tired of 8-9 hours.

THE QUESTIONS FOR THE INTERVIEW

Why do you spend a lot of time at home?

Is it more comfortable for you?

Which of your colleagues do you have the best relationship with ?

How long ago did you buy a car? Why do you get up so early

