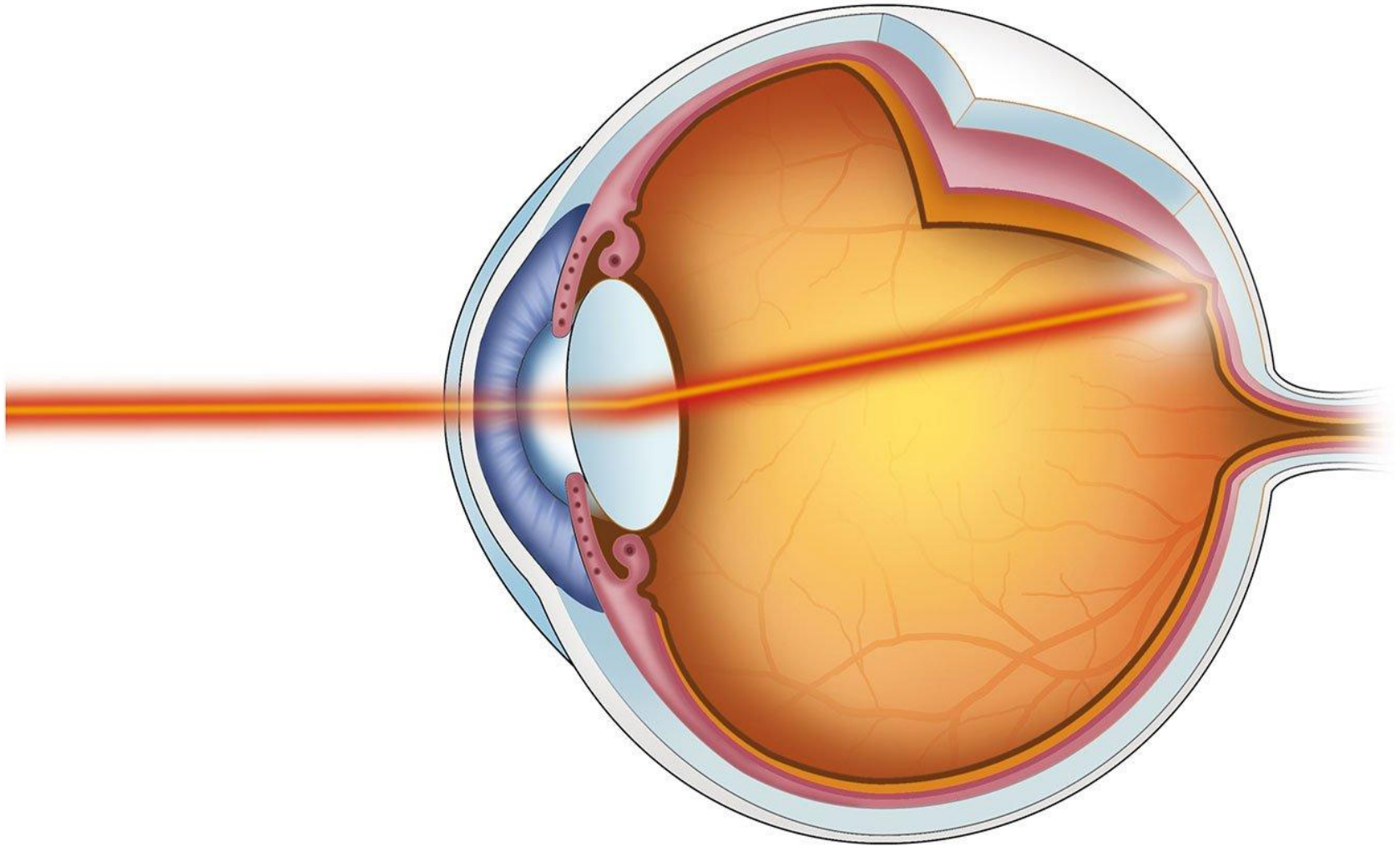


OHIO EYE RETINA TREATMENT



CRAO / BRAO

Most people know that high blood pressure and other heart diseases pose risks to your overall health. But many do not know that that high blood pressure can affect vision by damaging the arteries in the eye.



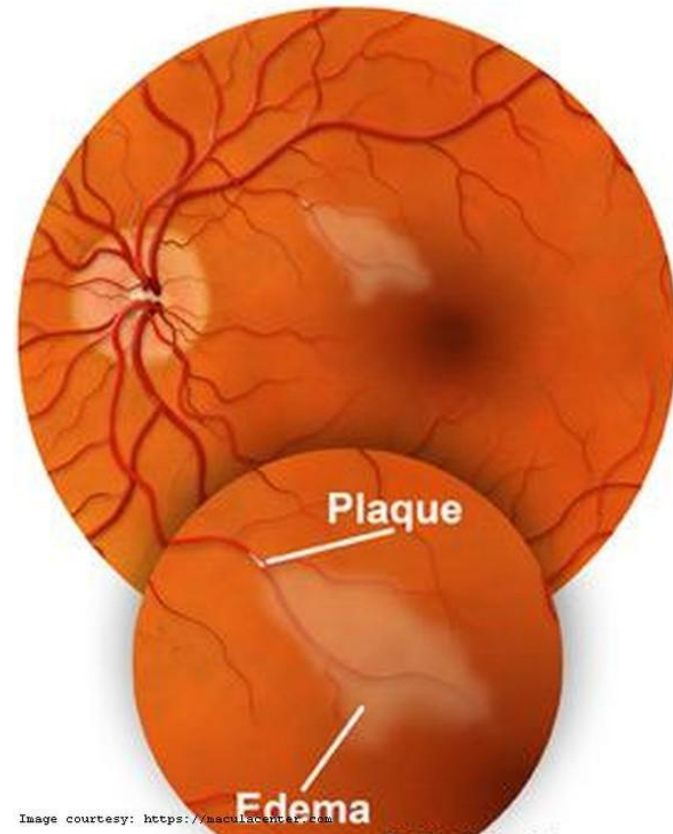


Who Is At Risk for a Retinal Artery Occlusion (RAO)?

Men are more likely to have an RAO than women. The disease is most commonly found in people in their '60s. Having certain diseases increases your risk of RAO. These include:

- Cardiovascular disease;
- Diabetes;
- High cholesterol;
- High blood pressure; and
- Narrowing of the carotid arteries.

Branch Retinal Artery Occlusion



Treatment of a Retinal Artery Occlusion

Several treatments may be tried but none have ever been proven to help consistently. These treatments must be given within a few hours after symptoms begin to be helpful. Some patients regain vision after a retinal artery occlusion, although vision is often not as good as it was before. In some cases, vision loss can be permanent.

<https://josepheyeandlaser.com/retina/>

