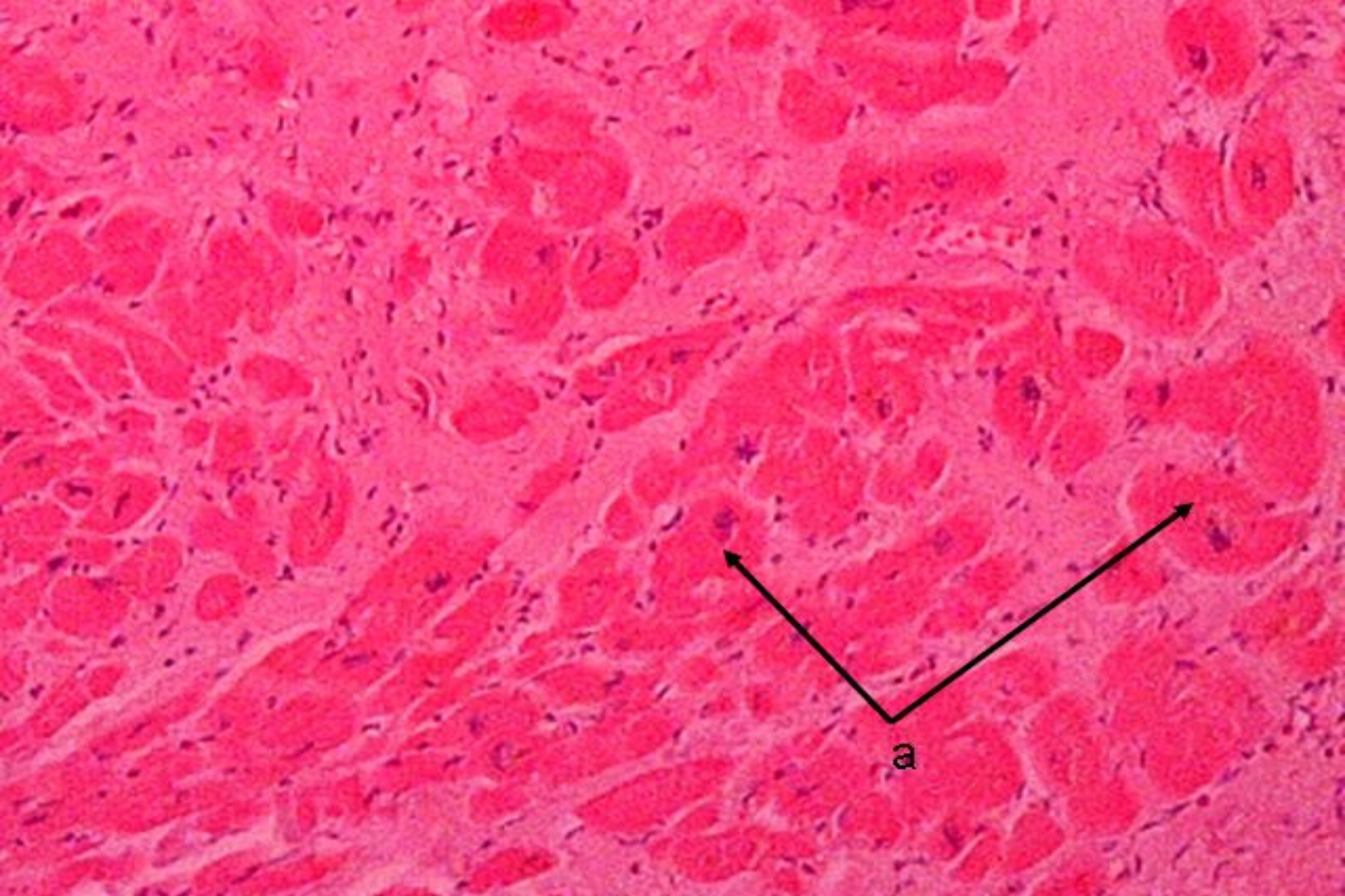


Topic № 9. Morphological characteristic of processes of adaptation and compensation: atrophy, hypertrophy (hyperplasia), organization, reorganization of tissues, metaplasia & dysplasia. Regeneration of certain tissues and organs. Repair of wounds.

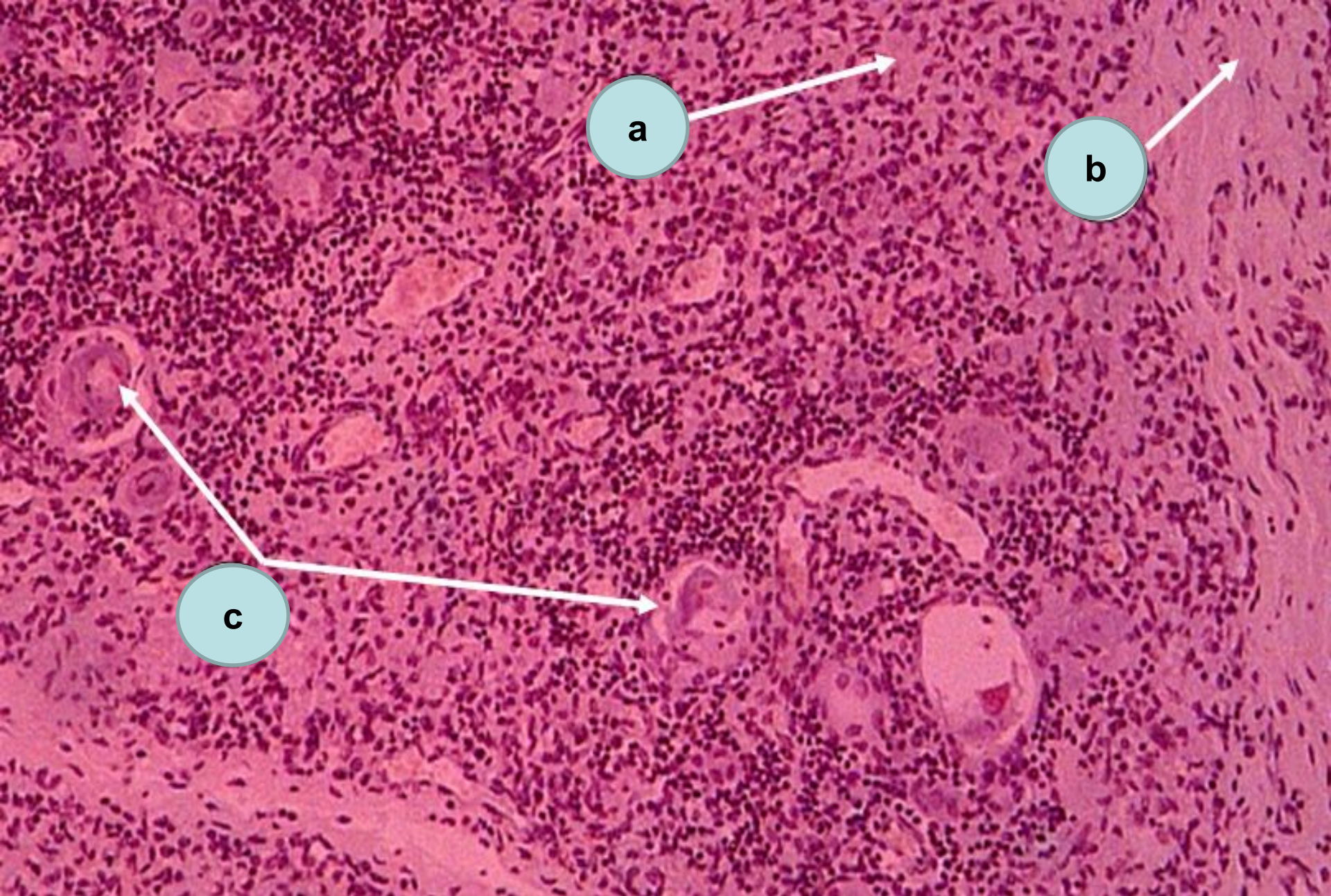
Prepared by
d.m.s. Shabdarbaeva D.M.



Hypertrophy of myocardium
a – hypertrophic cardiomyocytes



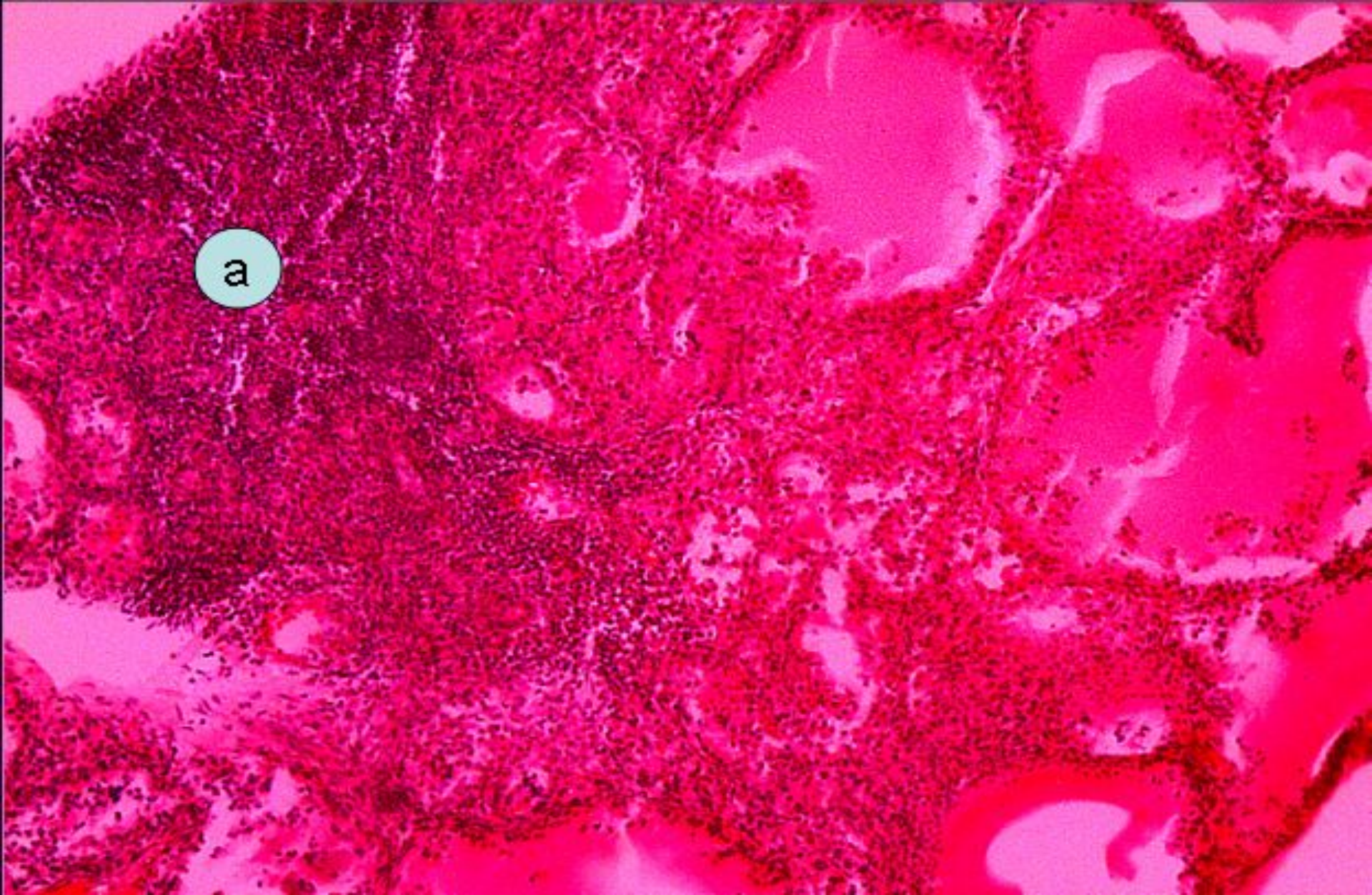
Nodular glandular hyperplasia of prostate
a – glandular tubes of different diameter
b – high columnar epithelium with light cytoplasm



Accidental atrophy of thymus gland

a – decreasing of number of lymphocytes in cortex; b – thickening of interlobular septi

c – Gassal's bodies



Autoimmune thyroiditis (Hashimoto goitre)
a – cellular infiltration