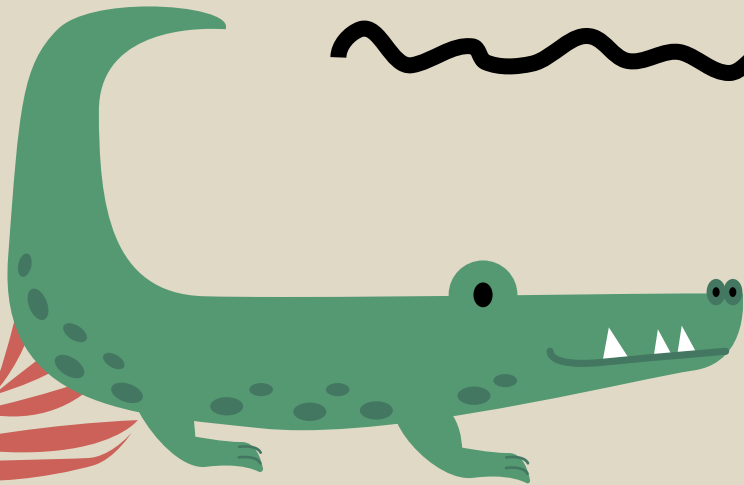


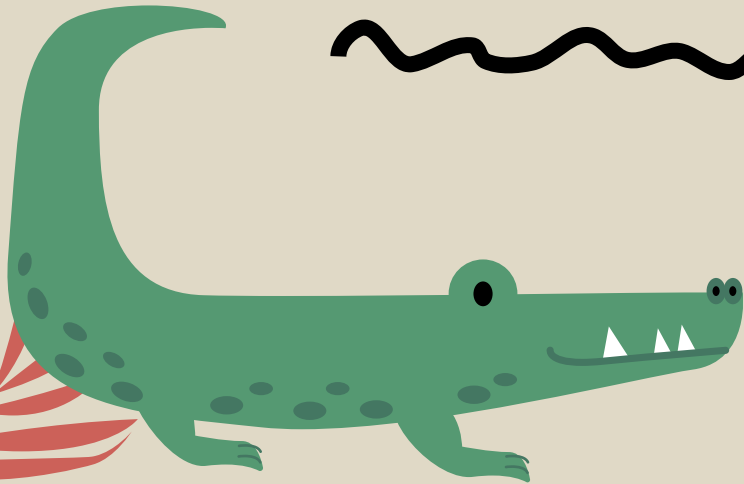
A cluster of tropical leaves in shades of green, red, and yellow in the top-left corner.A cluster of tropical leaves in shades of green and yellow in the top-right corner.A black, hand-drawn wavy line above the text.

National Parks

A black, hand-drawn wavy line below the text.



READING



Read the text.

**Match the paragraphs A-C
with the questions 1-3**

1. **What can people do there?**
2. **Where is it, how big is it?**
3. **What is the scenery like?**

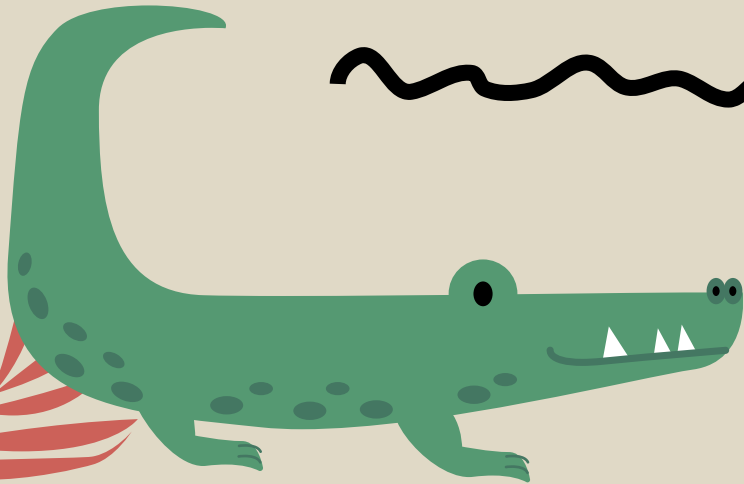
A The Lake District National Park is in the North of England. There are 15 National Parks in Britain, but the Lake District is bigger than the others. It's about 55 kilometres from east to west and 55 kilometres from north to south. There are mountains, lakes, woods, towns, villages and even some beaches.

B The Lake District is famous for its beautiful scenery. There are a lot of mountains and hundreds of hills. There are 16 large lakes and many smaller ones. This area has also got a lot of different animals: for example you can see rare animals like the red squirrel and the Golden Eagle.

C Over 40000 people live and work in the Lake District. There are also many visitors every year. You can go walking and climbing in the hills, and go swimming and sailing on the lakes. You can also visit many pretty villages and towns. It's a very popular place for visitor because there's something for everyone!



Are these statements
True or False?



There are 15 National Parks in the South of England

True

False

A

B

The Lake District National Park is in the North of England. There are 15 National Parks in Britain, but the Lake District is bigger than the others. It's about 55 kilometres from east to west and 55 kilometres from north to south. There are mountains, lakes, woods, towns, villages and even some beaches.

The Lake District is famous for its beautiful scenery. There are a lot of mountains and hundreds of hills. There are 16 large lakes and many smaller ones. This area has also got a lot of different animals: for example you can see rare animals like the red squirrel and the Golden Eagle.

Over 40000 people live and work in the Lake District. There are also many visitors every year. You can go walking and climbing in the hills, and go swimming and sailing on the lakes. You can also visit many pretty villages and towns. It's a very popular place for visitor because there's something for everyone!

**The Lake district is
forty-five kilometres
wide**

True

False

A

B

The Lake District National Park is in the North of England. There are 15 National Parks in Britain, but the Lake District is bigger than the others. It's about 55 kilometres from east to west and 55 kilometres from north to south. There are mountains, lakes, woods, towns, villages and even some beaches.

The Lake District is famous for its beautiful scenery. There are a lot of mountains and hundreds of hills. There are 16 large lakes and many smaller ones. This area has also got a lot of different animals: for example you can see rare animals like the red squirrel and the Golden Eagle.

Over 40000 people live and work in the Lake District. There are also many visitors every year. You can go walking and climbing in the hills, and go swimming and sailing on the lakes. You can also visit many pretty villages and towns. It's a very popular place for visitor because there's something for everyone!

There aren't any beaches in the Lake District

True

False

A

B

The Lake District National Park is in the North of England. There are 15 National Parks in Britain, but the Lake District is bigger than the others. It's about 55 kilometres from east to west and 55 kilometres from north to south. There are mountains, lakes, woods, towns, villages and even some beaches.

The Lake District is famous for its beautiful scenery. There are a lot of mountains and hundreds of hills. There are 16 large lakes and many smaller ones. This area has also got a lot of different animals: for example you can see rare animals like the red squirrel and the Golden Eagle.

Over 40000 people live and work in the Lake District. There are also many visitors every year. You can go walking and climbing in the hills, and go swimming and sailing on the lakes. You can also visit many pretty villages and towns. It's a very popular place for visitor because there's something for everyone!

There are more than sixteen lakes

True

False

A

B

The Lake District National Park is in the North of England. There are 15 National Parks in Britain, but the Lake District is bigger than the others. It's about 55 kilometres from east to west and 55 kilometres from north to south. There are mountains, lakes, woods, towns, villages and even some beaches.

The Lake District is famous for its beautiful scenery. There are a lot of mountains and hundreds of hills. There are 16 large lakes and many smaller ones. This area has also got a lot of different animals: for example you can see rare animals like the red squirrel and the Golden Eagle.

Over 40000 people live and work in the Lake District. There are also many visitors every year. You can go walking and climbing in the hills, and go swimming and sailing on the lakes. You can also visit many pretty villages and towns. It's a very popular place for visitor because there's something for everyone!

**Forty thousand people
visit the Lake District
every year**

True

False

A

B

The Lake District National Park is in the North of England. There are 15 National Parks in Britain, but the Lake District is bigger than the others. It's about 55 kilometres from east to west and 55 kilometres from north to south. There are mountains, lakes, woods, towns, villages and even some beaches.

The Lake District is famous for its beautiful scenery. There are a lot of mountains and hundreds of hills. There are 16 large lakes and many smaller ones. This area has also got a lot of different animals: for example you can see rare animals like the red squirrel and the Golden Eagle.

Over 40000 people live and work in the Lake District. There are also many visitors every year. You can go walking and climbing in the hills, and go swimming and sailing on the lakes. You can also visit many pretty villages and towns. It's a very popular place for visitor because there's something for everyone!

You can find red squirrels there

True

False

A

B

The Lake District National Park is in the North of England. There are 15 National Parks in Britain, but the Lake District is bigger than the others. It's about 55 kilometres from east to west and 55 kilometres from north to south. There are mountains, lakes, woods, towns, villages and even some beaches.

The Lake District is famous for its beautiful scenery. There are a lot of mountains and hundreds of hills. There are 16 large lakes and many smaller ones. This area has also got a lot of different animals: for example you can see rare animals like the red squirrel and the Golden Eagle.

Over 40000 people live and work in the Lake District. There are also many visitors every year. You can go walking and climbing in the hills, and go swimming and sailing on the lakes. You can also visit many pretty villages and towns. It's a very popular place for visitor because there's something for everyone!

Which of these outdoor activities are mentioned in the text?

Bird watching

Canoeing

Climbing

Cycling

Diving

Fishing

Horse Riding

Mountain biking

Snowboarding

Sailing

Swimming

Skiing

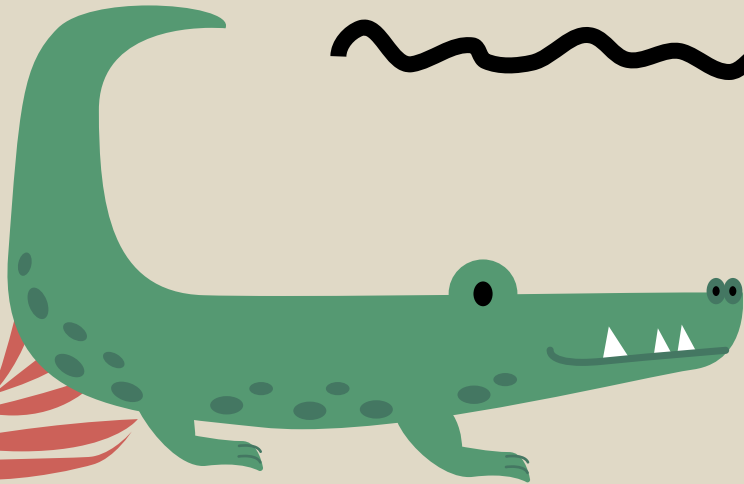
The Lake District National Park is in the North of England. There are 15 National Parks in Britain, but the Lake District is bigger than the others. It's about 55 kilometres from east to west and 55 kilometres from north to south. There are mountains, lakes, woods, towns, villages and even some beaches.

The Lake District is famous for its beautiful scenery. There are a lot of mountains and hundreds of hills. There are 16 large lakes and many smaller ones. This area has also got a lot of different animals: for example you can see rare animals like the red squirrel and the Golden Eagle.

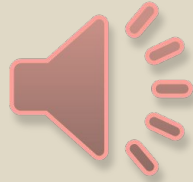
Over 40000 people live and work in the Lake District. There are also many visitors every year. You can go walking and climbing in the hills, and go swimming and sailing on the lakes. You can also visit many pretty villages and towns. It's a very popular place for visitor because there's something for everyone!

A cluster of tropical leaves in shades of green, red, and yellow in the top-left corner.A cluster of tropical leaves in shades of green and yellow in the top-right corner.A cluster of tropical leaves in shades of yellow and green in the bottom-right corner.A cluster of tropical leaves in shades of red and green in the bottom-left corner.

LISTENING



A: Killarney National Park

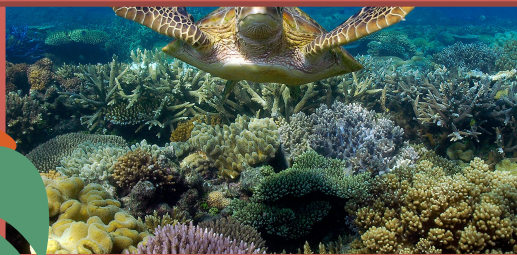


**Listen to 3 speakers
and match their
descriptions of
national parks with
the photos**



B: Banff National Park



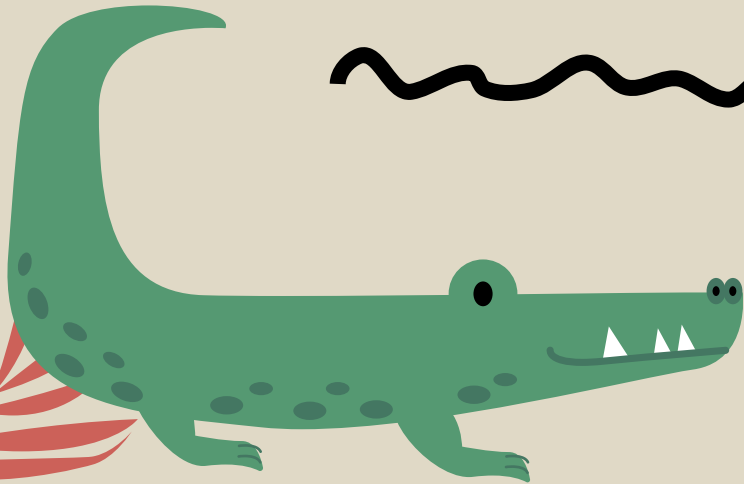

C: Great Barrier Reef
National Park



**Speaker 1: Photo
Speaker 2: Photo
Speaker 3: Photo**



Listen again and complete
the chart



Great Barrier Reef National Park



Natural features: ¹ _____ with beaches

Activities: swimming, ² _____, ³ _____

Killarney National Park

Natural features: ⁴ _____, ⁵ _____ forest

Activities: sailing, ⁶ _____, walking

Banff National Park

Natural features: ⁷ _____ lakes

Activities: skiing, ⁸ _____, ⁹ _____, canoeing



Great Job!

