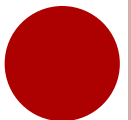


TASHKENT PEDIATRIC MEDICAL INSTITUTE

FOREIGN LANGUAGES DEPARTMENT

- Educational branch:
- Pediatrics
- Medical business
- Medical Biology
- Medical pedagogics
- Course: 1
- Theme: Digestive system(Anatomy)
- Lesson №16
- Instructor: Sharipova F.I.



AIM AND OBJECTIVES OF THE LESSON

ACQUIRE BASIC LANGUAGE SKILLS (LISTENING, SPEAKING, READING AND WRITING) THROUGH GIVEN TOPIC

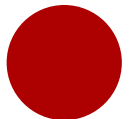
By the end of the lesson, learners should know:

1. The pronunciation of new words relating to the topic
2. Translation of new words relating to the topic
3. Use the new words of the topic

Learners will be able to:

1. Identify the various parts of the digestive system.
2. Speak about the various parts of the digestive system.

| Time | Mode of interaction | Content | Materials |
|-------------|---|---|---|
| 8.30-9.00 | Roll call. Checking covered material. | Activity "Music box" Check students awareness of previous lesson topic. | Music tape recorder |
| 9.00- 9.10 | Present stage. Warm up whole group | Bring a picture to a class. (The picture of alimentary tract) Elicit from Ss the different opinions and write them on the board. Ss work in pairs. They tell each other what part of the body in the picture is and its functions. Ask your students to discuss the following questions: 1. What is the alimentary tract? 2. For what purpose the digestion of food takes place in our body? (for liberation of energy.) 3. Which part of our body is responsible for the digestion of food? (alimentary canal) 4. In which part of the alimentary canal does the digestion of food begins? (mouth) | Poster Slide |
| 9.10-9.30 | Video watching. Whole group | Let the students watch the video about digestive system and do the tasks related to the topic. | computer LCD projector handouts |
| 9.30-9.45 | Practice Reading and speaking | Ss read the text about digestive system and discuss the questions about the text orally | (A.M.Maslova "Essential English for medical students"). |
| 9.45-10.00 | Produce Cluster Pair work | Show the Ss the sample of cluster and ask them to make the cluster according to the text. | Board Marker Handout |
| 10.00-10.05 | Assessment | Teacher assesses students according to their participation during the lesson | |



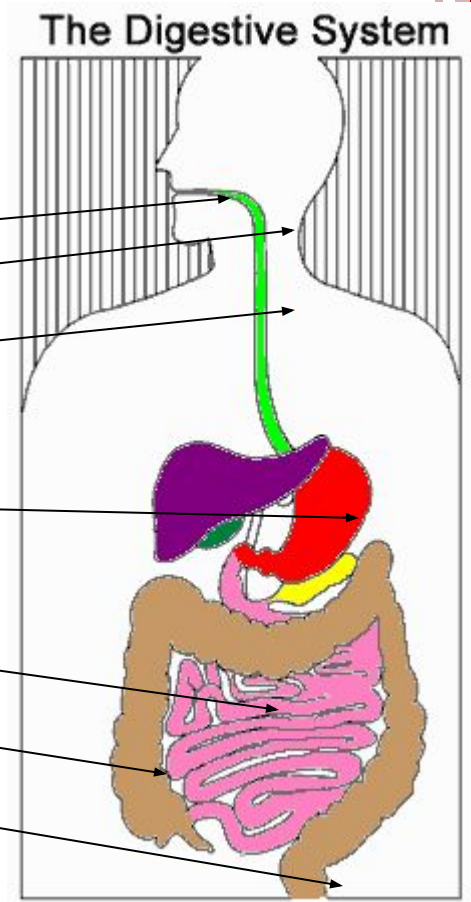
DIGESTIVE SYSTEM ORGANIZATION

▶ Gastrointestinal (GI) tract

- ▶ Tube within a tube
- ▶ Direct **link/path** between organs

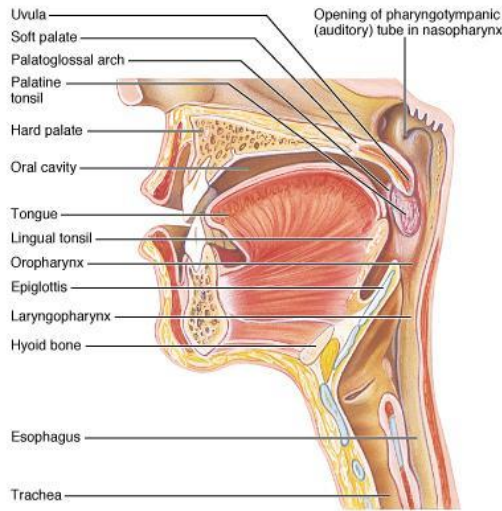
▶ Structures

- ▶ Mouth
- ▶ Pharynx
- ▶ Esophagus
- ▶ Stomach
- ▶ Small intestine
- ▶ Large Intestine
- ▶ Rectum



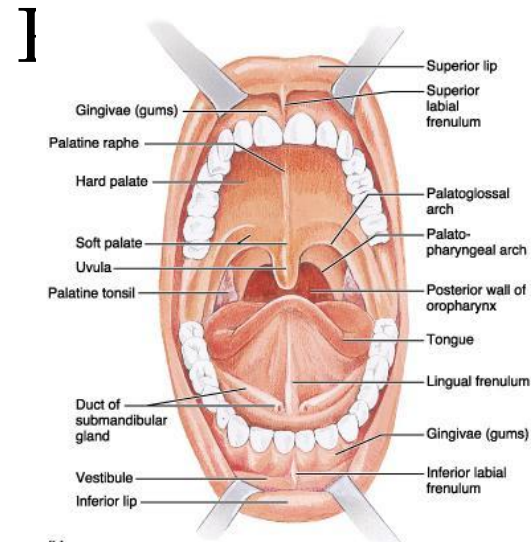
MOUTH

Teeth mechanically break down food into small pieces. Tongue mixes food with saliva (contains amylase, which helps break down starch).

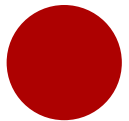


(a)
Copyright © 2001 Benjamin Cummings, an imprint of Addison Wesley Longman, Inc.

Epiglottis is a flap-like structure at the back of the throat that closes over the trachea preventing food from entering it. It is located in the



(b)
Copyright © 2001 Benjamin Cummings, an imprint of Addison Wesley Longman, Inc.

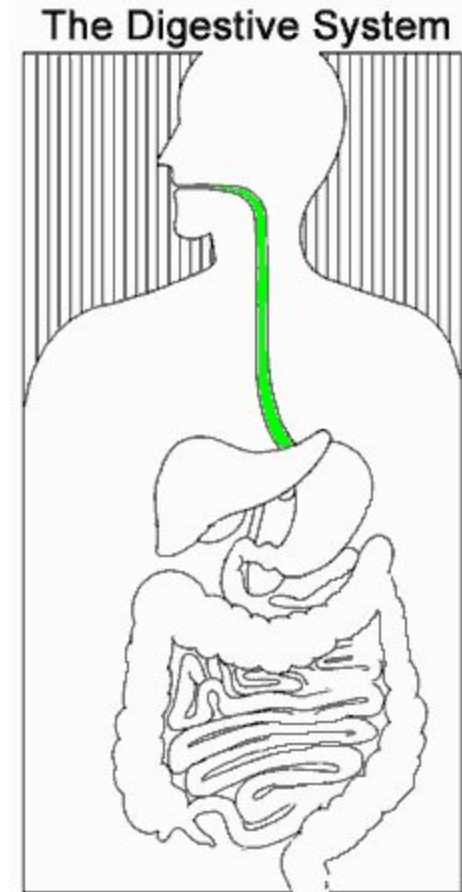


ESOPHAGUS

- ▶ Approximately 20 cm long.
- ▶ Functions include:
 1. Secrete **mucus**
 2. Moves food from the throat to the stomach using muscle movement called **peristalsis**
- ▶ If acid from the stomach gets in here that's **heartburn**.

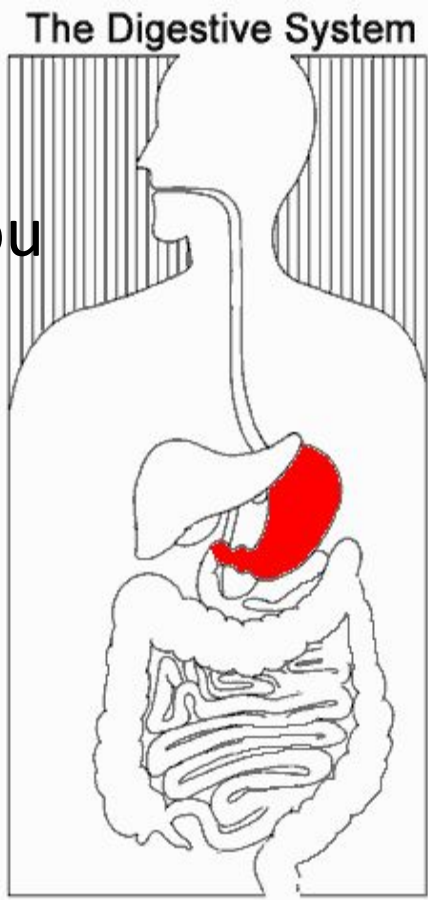
[Esophagus Video](#)

[Mouth, Pharynx and](#)



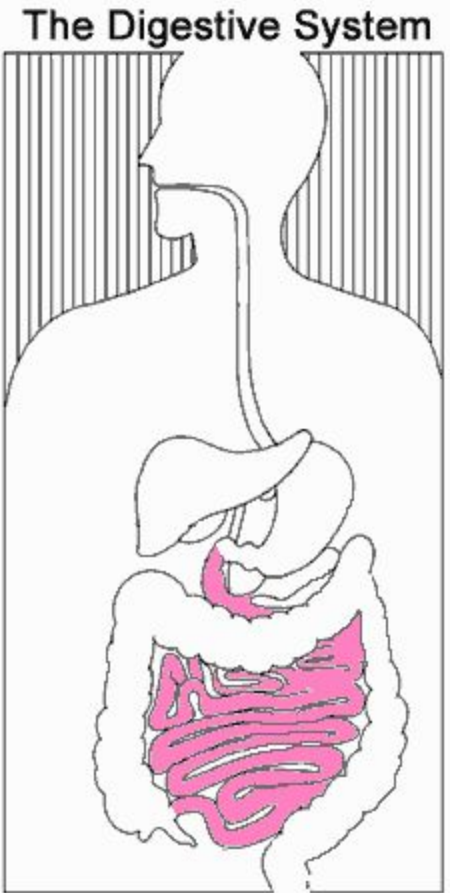
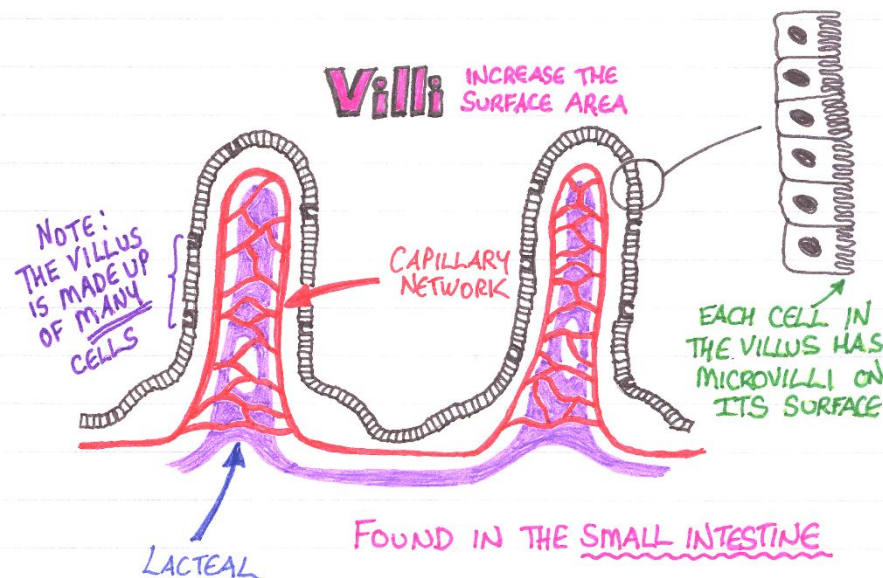
STOMACH

- J-shaped muscular bag that stores the food you eat, breaks it down into tiny pieces.
- Mixes food with **Digestive Juices** that contain enzymes to break down **Proteins and Lipids**.
- **Acid (HCl)** in the stomach Kills Bacteria.
- Food found in the stomach is called Chyme.



SMALL INTESTINE

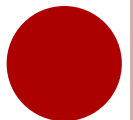
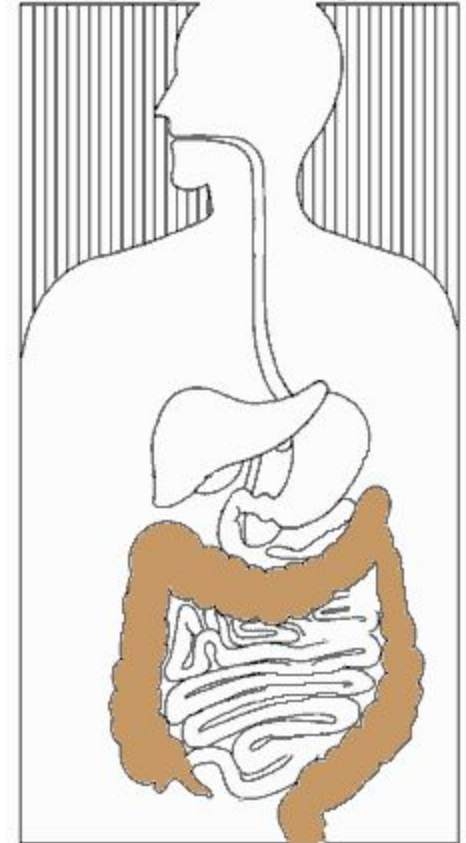
- Small intestines are roughly 7 meters long
- Lining of intestine walls has finger-like projections called **villi**, to increase surface area.
- The villi are covered in **microvilli** which further increase surface area for absorption.



LARGE INTESTINE

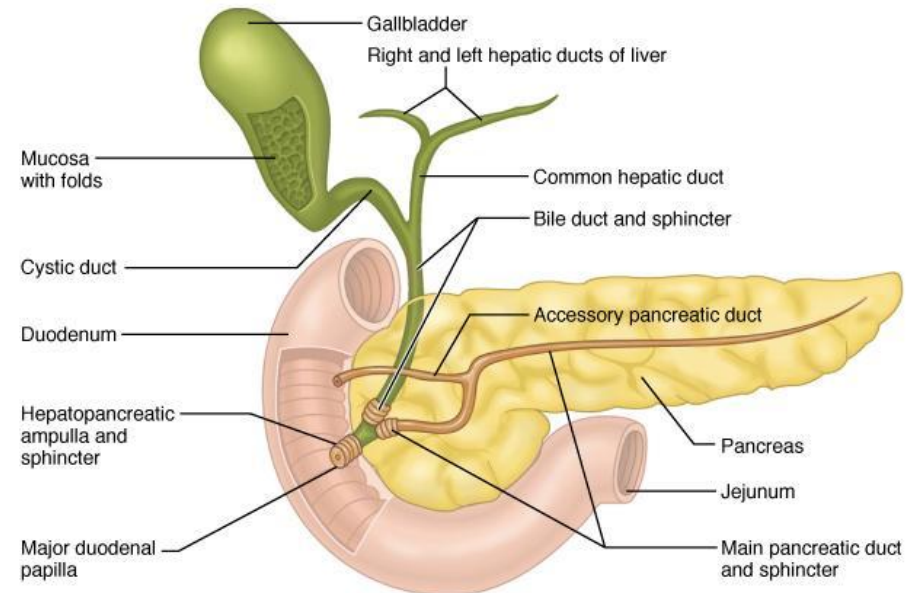
- About **1.5 meters** long
- Accepts what small intestines don't absorb
- **Rectum** (short term storage which holds feces before it is expelled).

The Digestive System



ACCESSORY ORGANS THE GLANDS

- Not part of the path of food, but play a critical role.
- Include: Liver, gall bladder, and pancreas

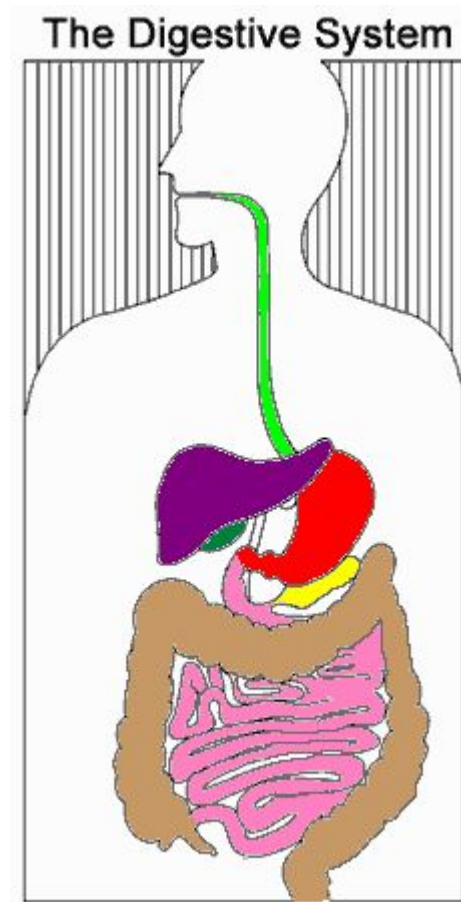


Copyright © 2001 Benjamin Cummings, an imprint of Addison Wesley Longman, Inc.



On a sheet of paper, write the name of each colored organ:

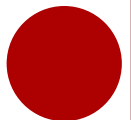
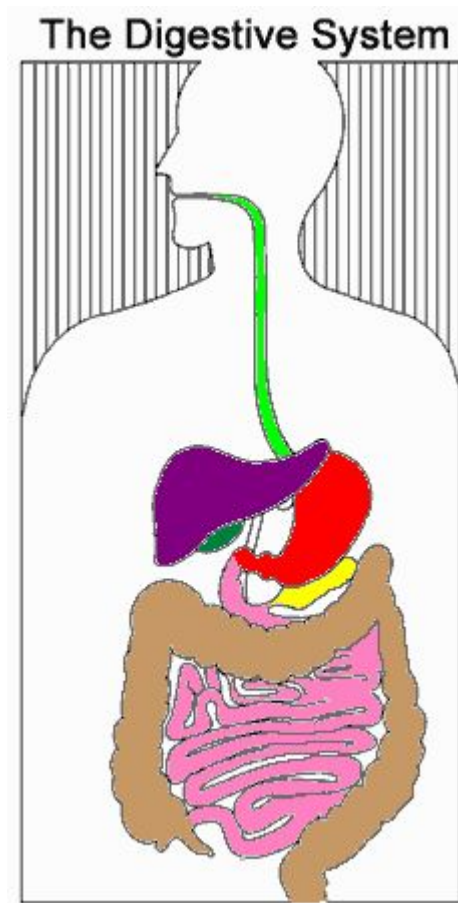
- Green:
- Red:
- Pink:
- Brown:
- Purple:
- Green:
- Yellow:



HOW'D YOU DO?

- Green: Esophagus
- Red: Stomach
- Pink: Small Intestine
- Brown: Large Intestine
- Purple: Liver
- Green: Gall Bladder
- Yellow: Pancreas

Great Job!

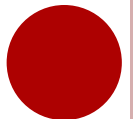


HANDOUT

- ▣ **1. Make up at least 8 sentences using words given below.**

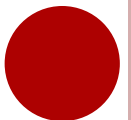
- ▣ **Digestive**
- ▣ **Mouth**
- ▣ **Pharynx**
- ▣ **Esophagus**
- ▣ **Stomach**
- ▣ **small intestine**
- ▣ **large intestine**
- ▣ **liver**
- ▣ **gallbladder**
- ▣ **gland**
- ▣ **abdomen**
- ▣ **capacity**
- ▣ **to serve**
- ▣ **to deliver**
- ▣ **nutrients**

- ▣ **2. Fill in the blanks using words from the box.**
- ▣ **Alimentary, teeth, tongue, soft and hard palates, pharynx, esophagus, stomach, small intestine, duodenum, jejunum , liver, ileum, large intestine, pancreas, gallbladder.**
- ▣ **1.The ...is a musculomembraneous canal about 8| 12 meters in length.**
- ▣ **2.Important structures of the mouth are the and....**
- ▣ **3.The.... and...and the salivary glands are also in the oral cavity.**
- ▣ **4.From the mouth food passes through the.... To the... and then... to the....**
- ▣ **5.The...is a thin-walled muscular tube about 6-5 meters long.**
- ▣ **6.The small intestine is composed of the..., ...,**
- ▣ **7.The.... divided, into caecum, colon, sigmoid and rectum.**
- ▣ **8.The...is the largest gland in the human body.**
- ▣ **9.The...is a long thin gland lying behind the stomach.**
- ▣ **10.The...is hollow sac lying on the lower surface of the liver.**



REFERENCES:

- 1. English in Topics M.Sh.Kamilova, M.A. Shukurova, Tashkent, 2010.
- 2. Essential Medical Terminology M.Sh.Kamilova, Kh.D.Aymetova, D.R.Nabiyeva, Tashkent, 2010.



CONTROL QUESTIONS

- 1. Have you had breakfast?
- 2. What is the alimentary tract?
- 3. For what purpose the digestion of food takes place in our body? (for liberation of energy.)
- 4. Which part of our body is responsible for the digestion of food? (alimentary canal)
- 5. In which part of the alimentary canal does the digestion of food begins? (mouth)

