



*You are not fighting alone*

02.04.22

*World Cancer  
Awareness  
Day*

‘CLOSE THE CARE GAP’





# *Whoa!*

---

I am PAYAL SHARMA,  
4<sup>TH</sup> year, General Medicine,  
Altai State Medical University

02.04.22



02.04.22

01

*Facts !*

---

No, it is not communicable  
diseases.



*Close the care gap*



## *Did you know?*

Approximately there are 200 types of cancer in the world.

Among 1.4 million people die because of lung cancer.

# *About World Cancer Awareness Day*

---

World Cancer Day, annual observance held on **February 4** that is intended

- to increase global awareness of cancer.
- to inform and encourage people on its prevention, early detection, and treatment.



# History of World Cancer Day

*Declared  
world day*

First World Summit  
Against Cancer,  
which was held in  
Paris

*Better  
facilitation*

Begining of an  
international  
collaboration to  
improve cancer-care  
resources.

*“Not beyond  
us” theme*

demonstrates  
a **positive and  
proactive approach  
toward the disease**

*“close the  
care gap”  
theme*

About equity and it  
concerns everyone.

2000

2007

2015

2022



~~*Cancer is a word,  
not a sentence.*~~

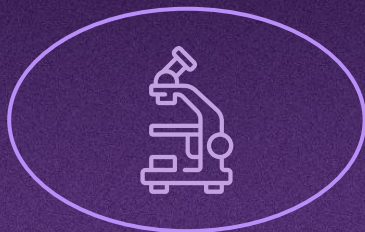
---



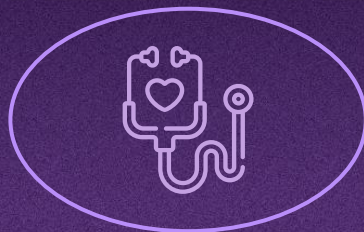
# Our goals



*Healthy  
lives*



*Early  
detection*



*Treatment  
for all*



*Quality of  
life for all*





02.04.22

“

“We have two options, Medically or Emotionally: give up or fight like hell.”

—*Lance Armstrong*

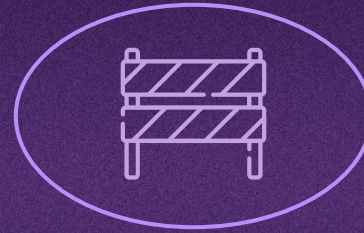


# Realizing the problem



## *Inequity*

Inequity in cancer care costs lives.



## *Barriers*

People who seek cancer care hit barriers at every turn.





# *Barriers in cancer care*



*Gender  
discrimination*



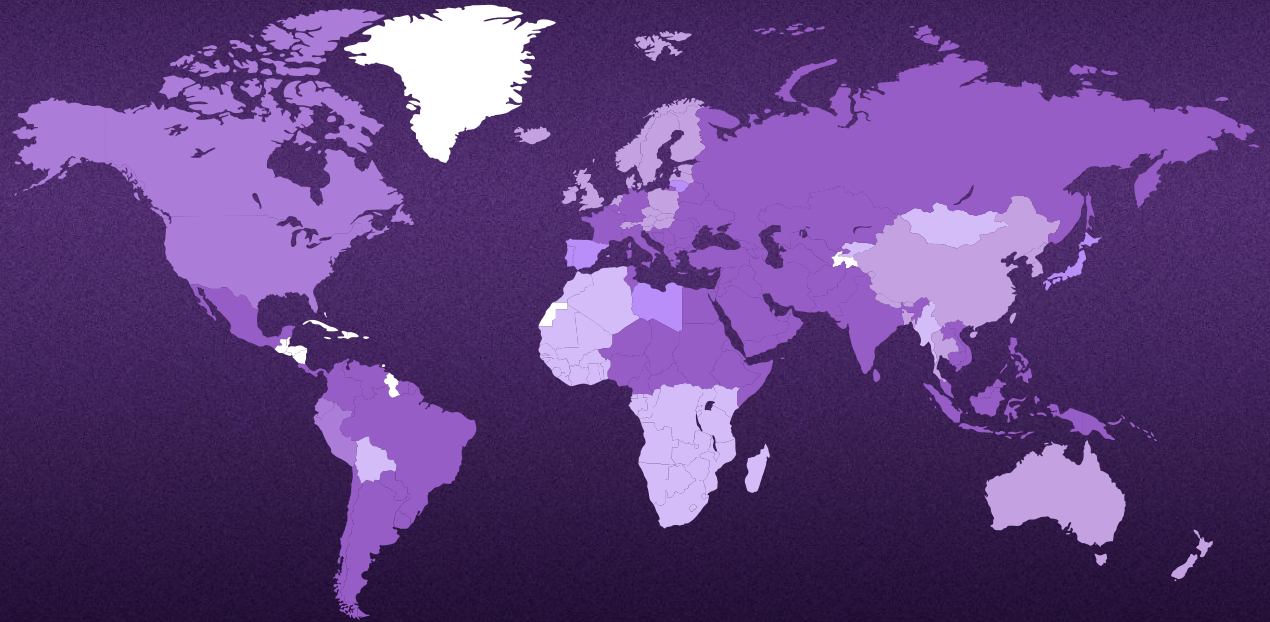
*Socioeconomic  
status & poverty*



*Age  
discrimination*

# Cancer mortality

- Breast
- Lung
- Colorectum
- Stomach
- Liver
- No data



# *Risk factors*

*Tobacco*

*Alcohol*

*Environmental*

*Unhealthy diet*

*No exercise*

*Infections*

# *How and when is it diagnosed?*

Stage 1 

Stage 2 

Stage 3 

Stage 4 

Stage unknown 

Follow the link in the graph to modify its data and then paste the new one here. For more info, [click here](#)



02

## *Statistics*

---

Breast cancer 17%

Lung cancer 15%

Colorectal cancer 12%

Prostate cancer 10%

*You are the hero*

# Today vs. 2030



14m

*New cancer cases  
in 2022*



21.7m

*Predicted cancer  
cases in 2030*

*We believe in you*



# Survival statistics

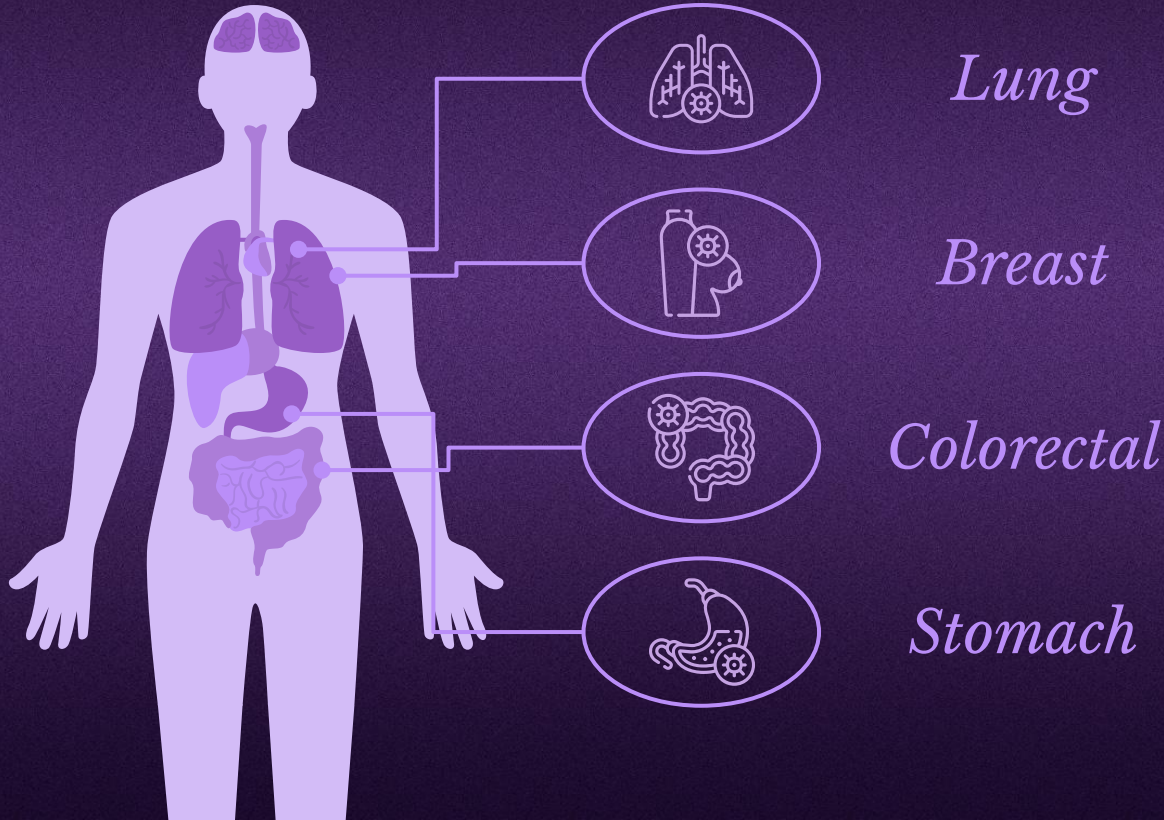
<i>Type of cancer</i>	<i>Early detection</i>	<i>Late detection</i>
Colon	91%	11%
Lung	49%	3%
Bladder	92%	6%
Renal	90%	10%
Prostate	99%	32%
Breast	98%	27%



*Never give up, Never give  
in !!*



# Most frequent cancers





8,800,000

---

Number of people who die of cancer every year



02.04.22

# Usual treatments



*Surgery*

65%

*Radiotherapy*

50%

*Medicines*

46%

# *World Cancer Day themes*

<i>Year</i>	<i>Theme</i>
2019-2021	I am and I will
2016-2018	We can. I can
2015	Not beyond us
2014	Debunk the myths
2013	Cancer myths. Get the facts
2012	Together let's do something
2010-2011	Cancer can be prevented

# Know the ribbons



*For all*



*Breast*



*Thyroid*



*Bladder*



*Bone*



*Ovarian*



*Cervical*



*Prostate*



*Testicular*



*Lung*



# Key issues



## *Access care equity*

Mercury is the closest planet to the Sun



## *Awareness*

Despite being red, Mars is actually a cold place



## *Risk reduction*

Venus is the second planet from the Sun



## *Emotional impact*

Earth is the third planet from the Sun



# Care guidelines



*Be informed*

*Special care*

*Support*

*Counseling*

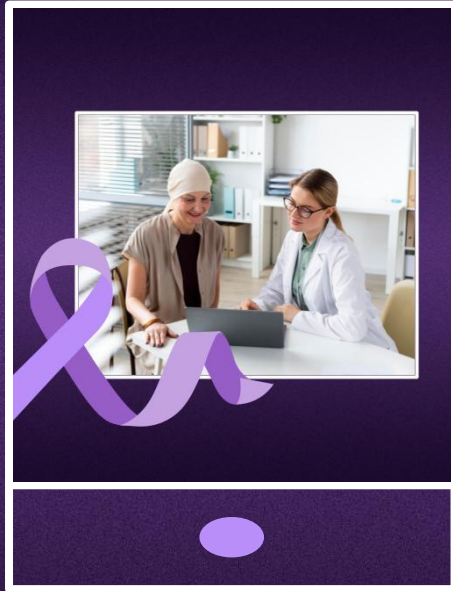
*Resources*



## Conclusions

- Awareness about the usage of alcohol and tobacco..
- Importance of diet and nutrition, food habits.
- Importance of physical activity and overweight issues.
- Importance of self-awareness, early detection and treatment of cancer.





*Thanks!*

*02.04.22*

