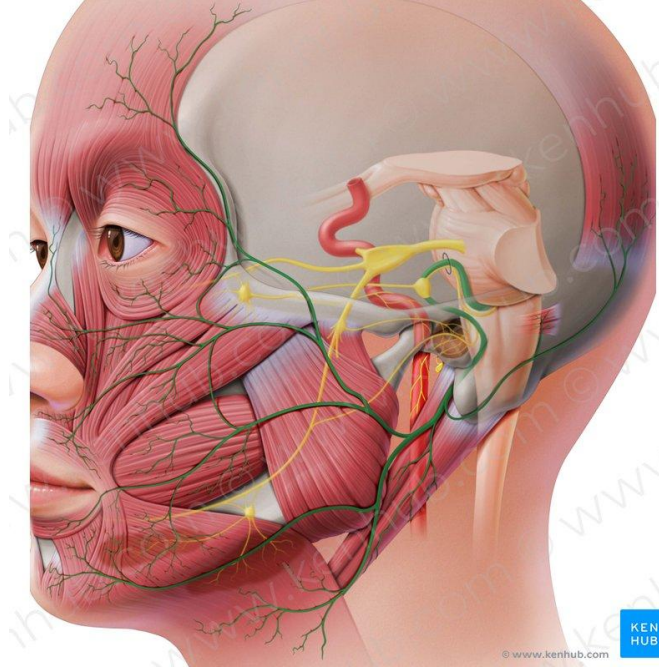
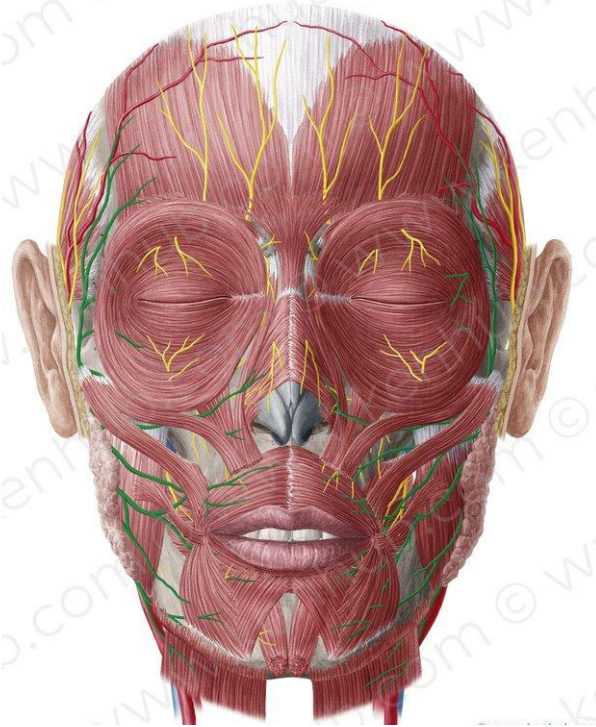
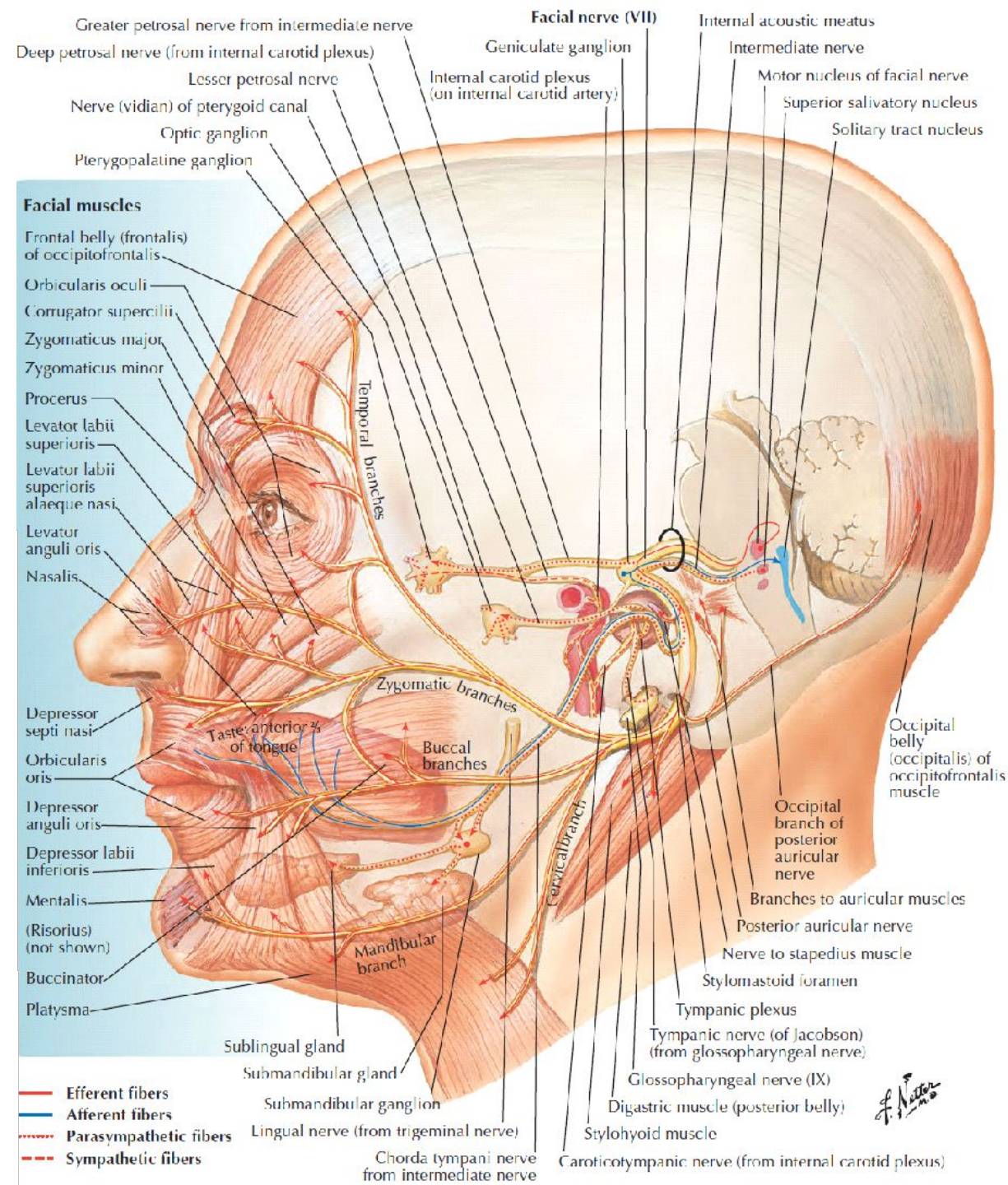


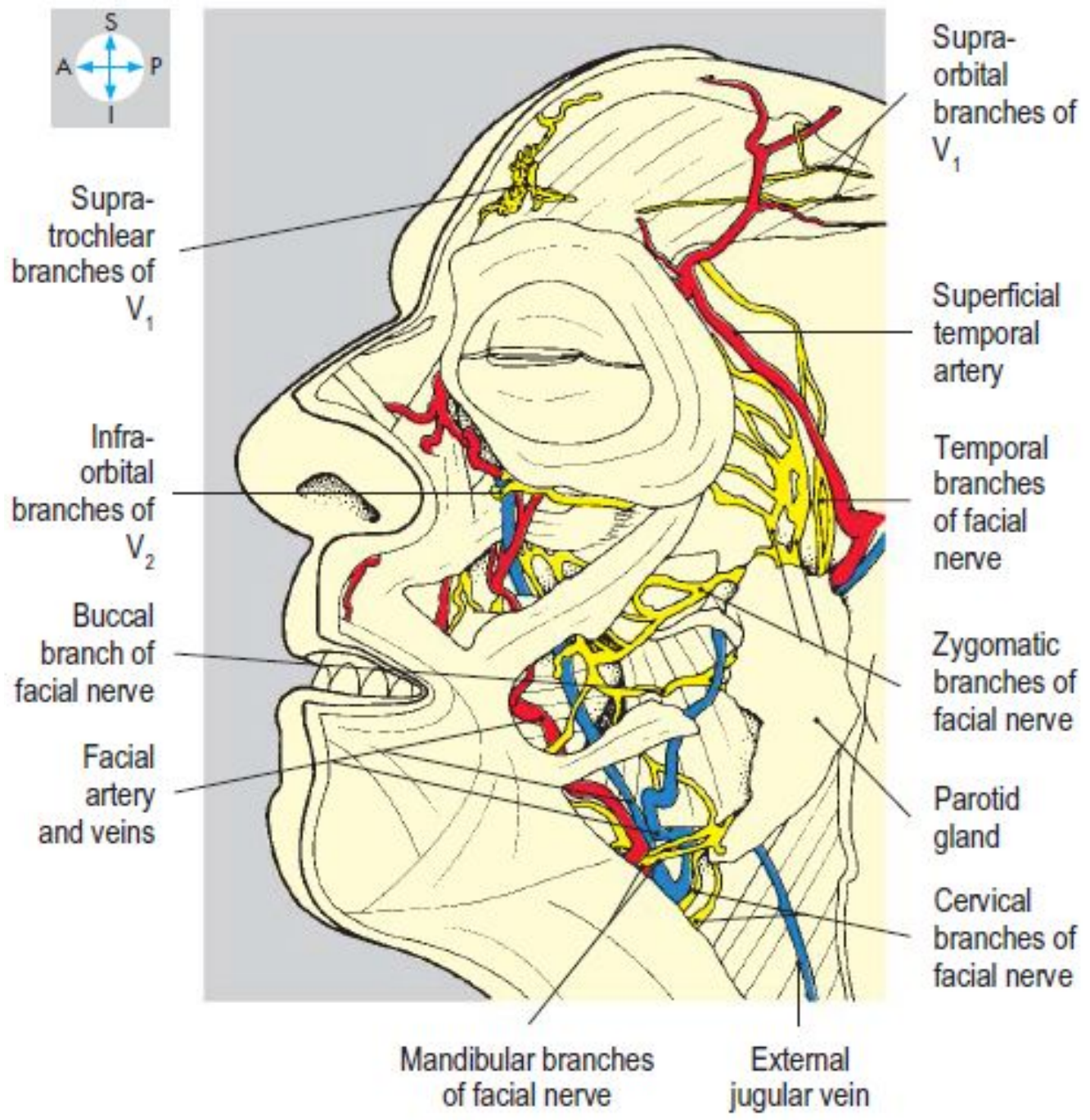
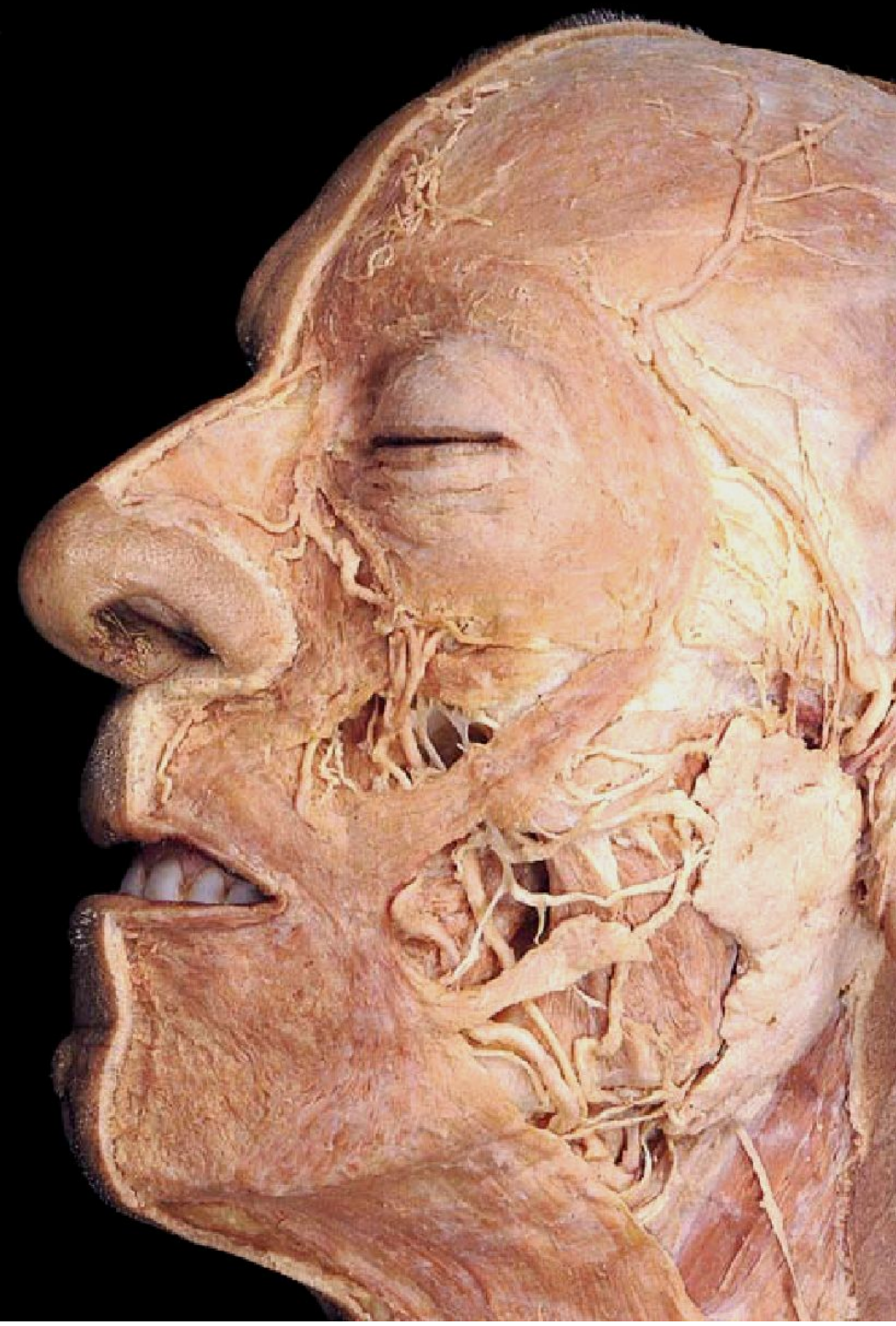
Extracranial branches

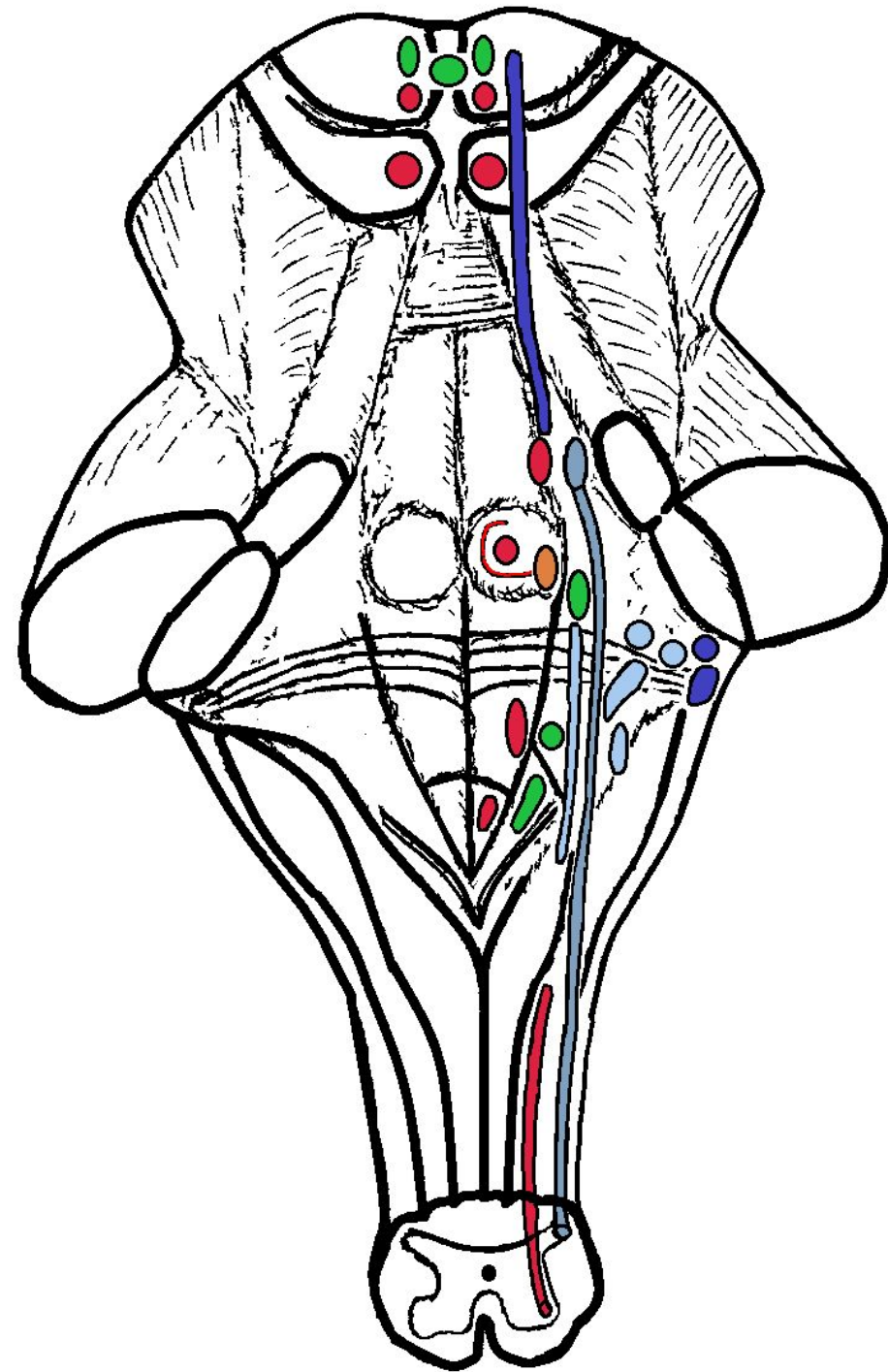
- Posterior auricular nerve – controls movements of some of the scalp muscles around the ear
- Branch to posterior belly of digastric muscle as well as the stylohyoid muscle
- Five major facial branches (in parotid gland) – from top to bottom:
 - Temporal branch
 - Zygomatic branch
 - Buccal branch
 - Marginal mandibular branch
 - Cervical branch

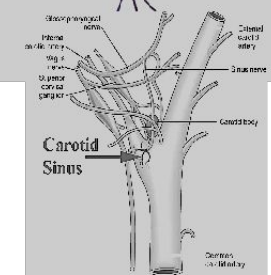
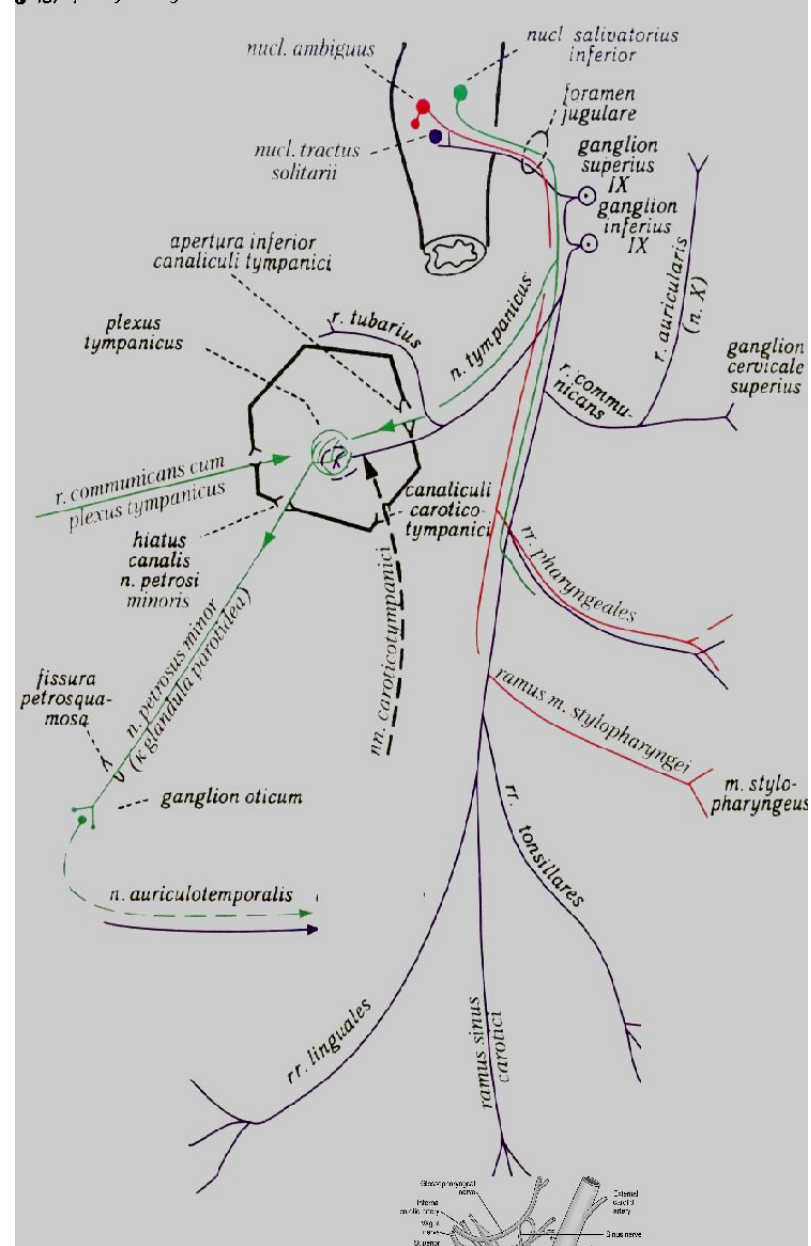
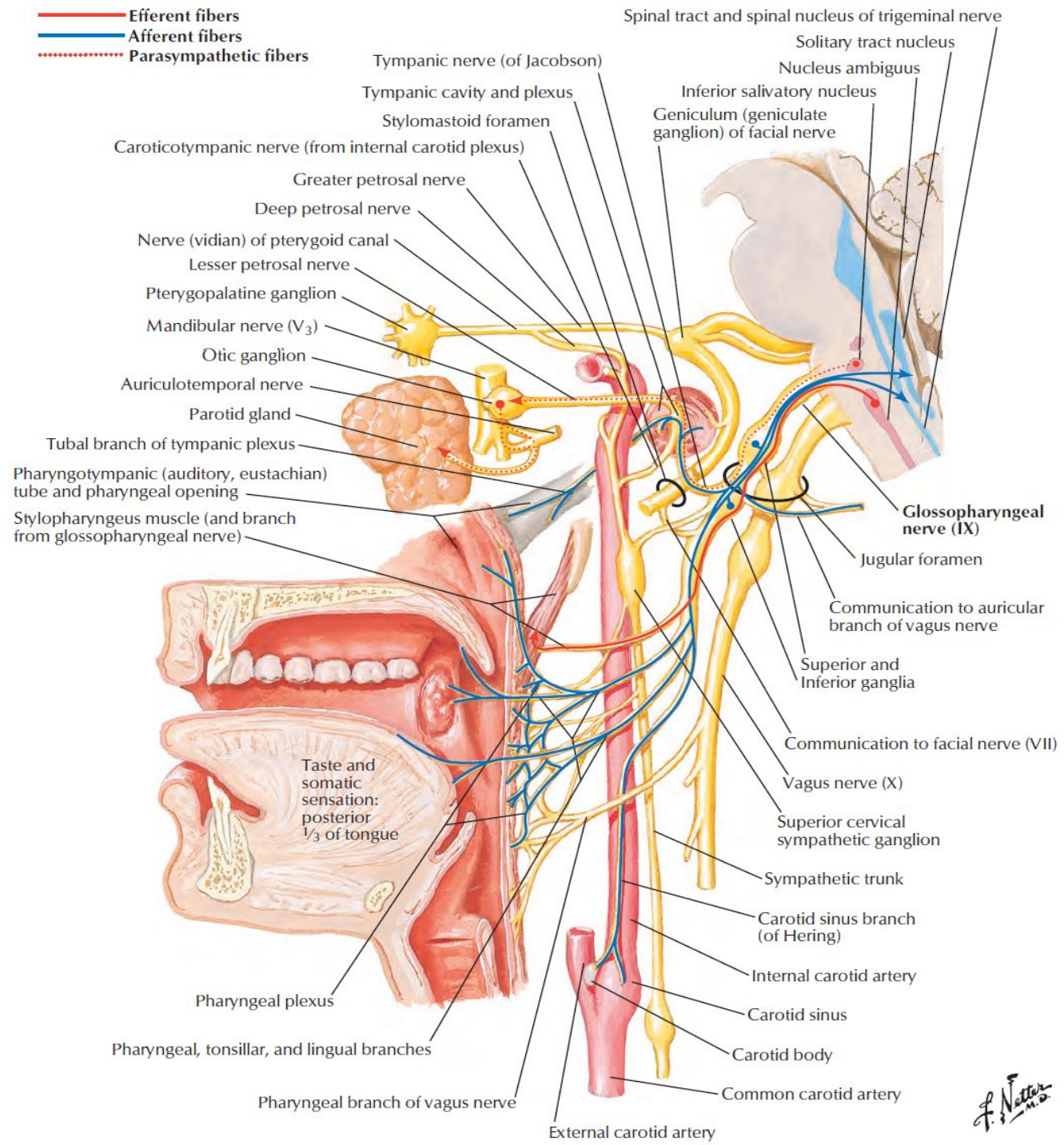


- **Intracranial branches**
- Greater petrosal nerve
- Communicating branch to the otic ganglion
- Nerve to stapedius
- Chorda tympani
- **Extracranial branches**
- Posterior auricular nerve
- Digastric
- Five major facial branches (in parotid gland) – from top to bottom:
 - Temporal branch
 - Zygomatic branch
 - Buccal branch
 - Marginal mandibular branch
 - Cervical branch



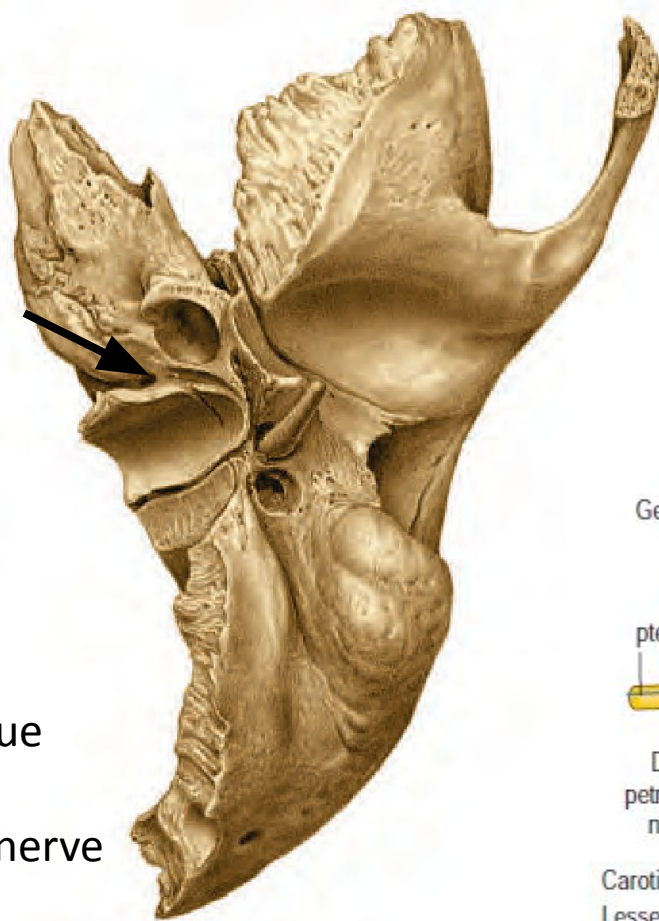




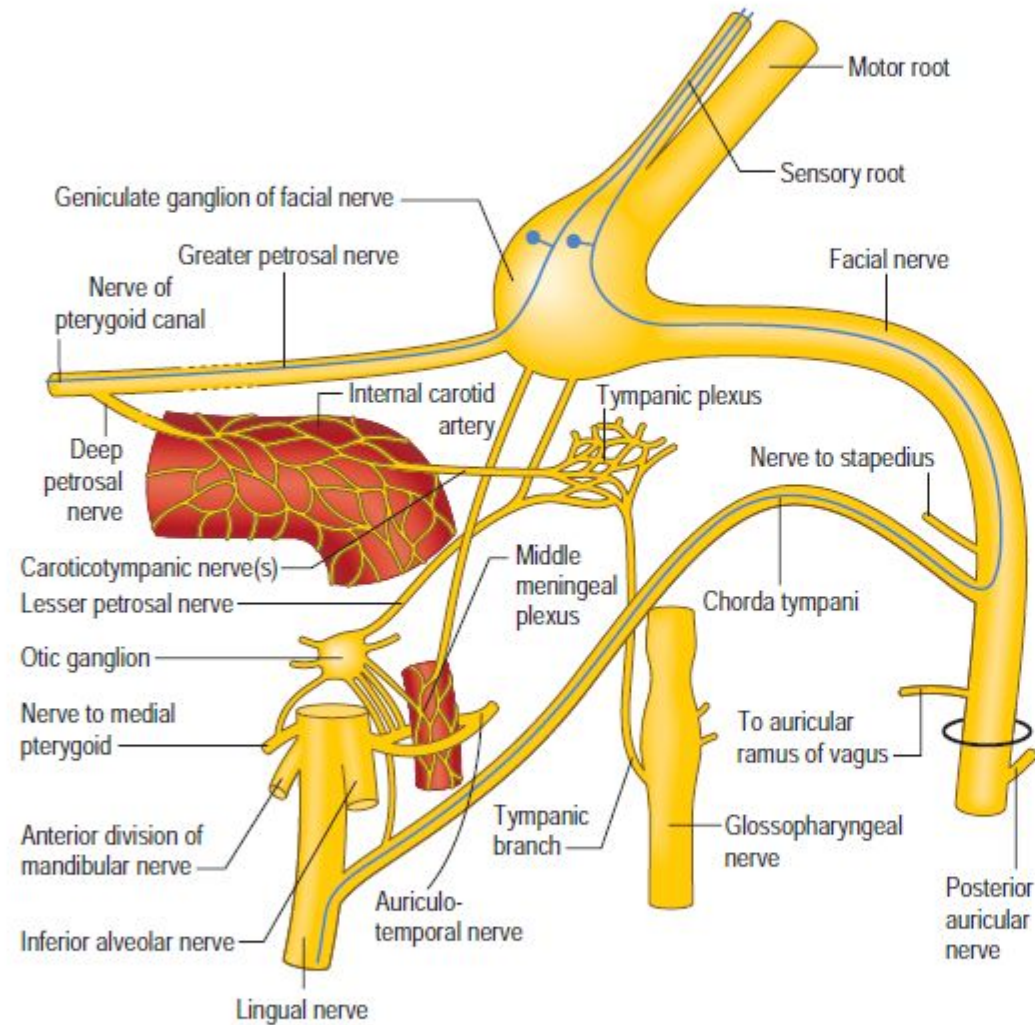


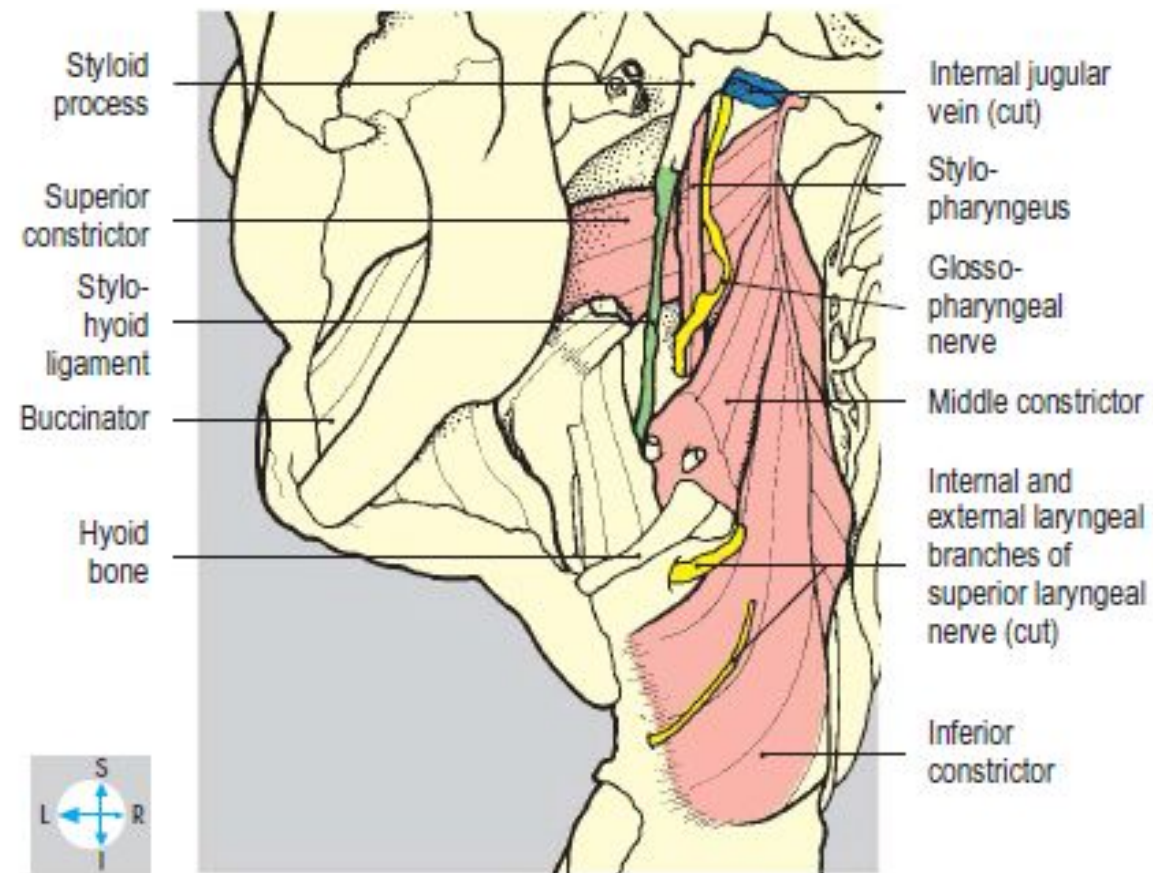
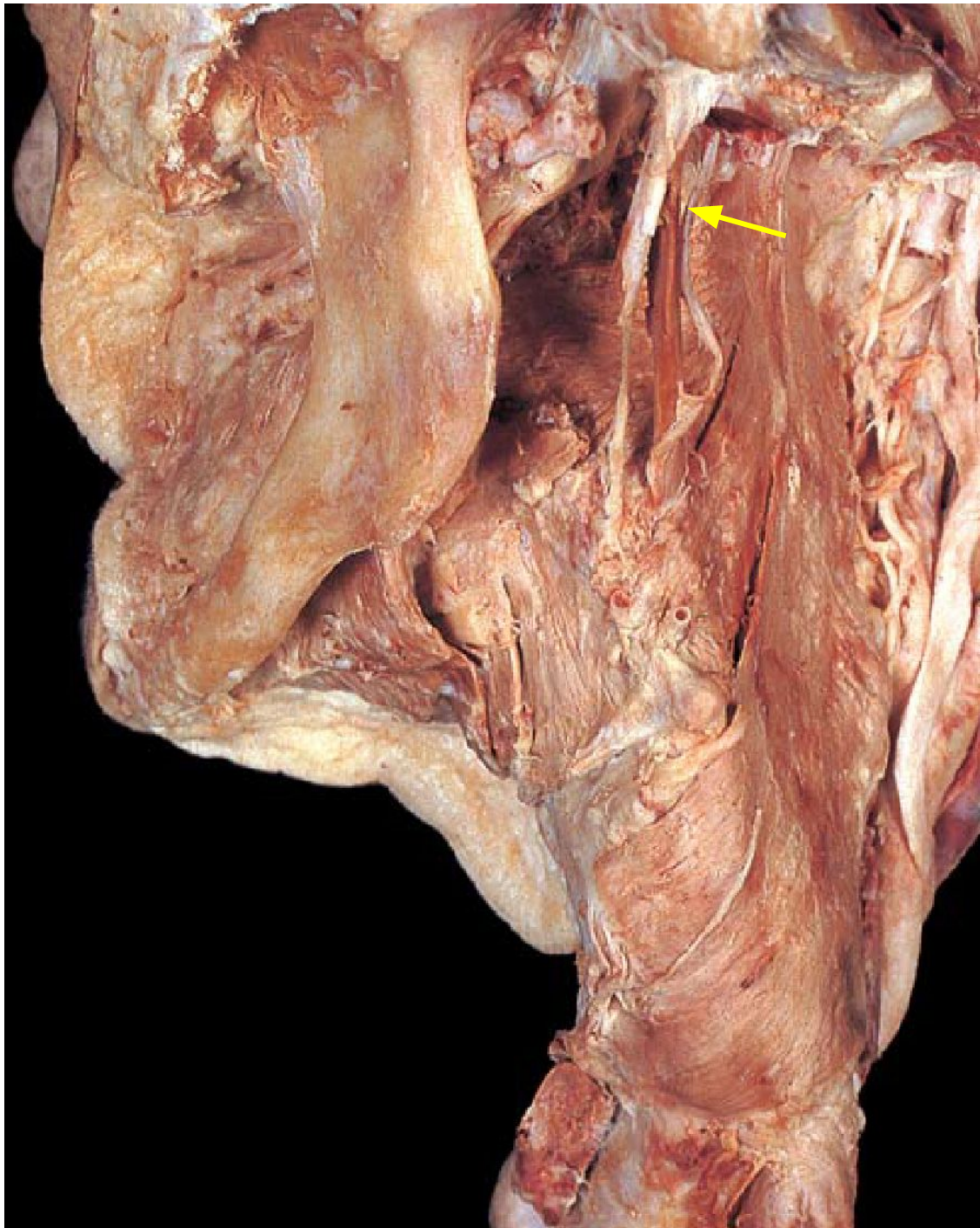
F. Netter M.D.

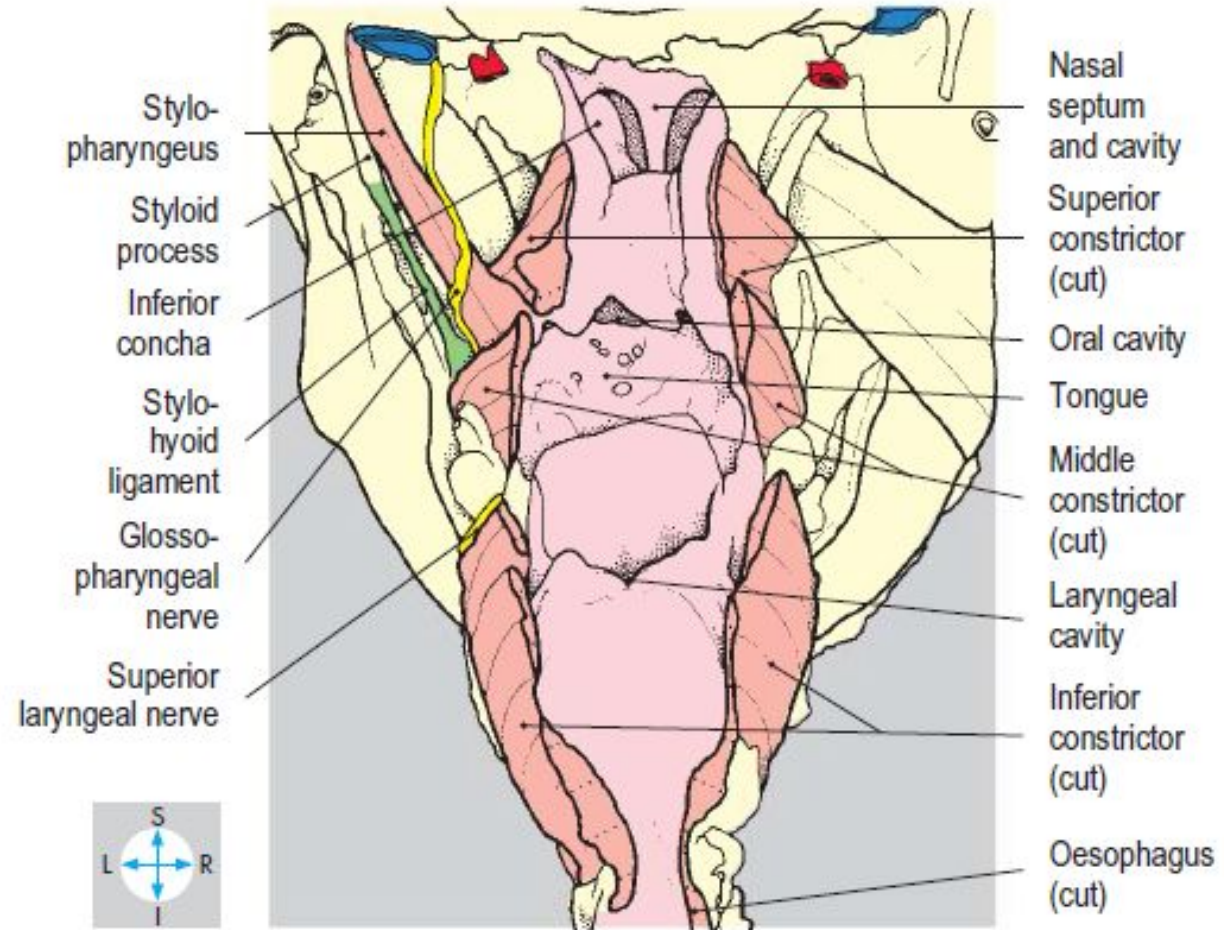
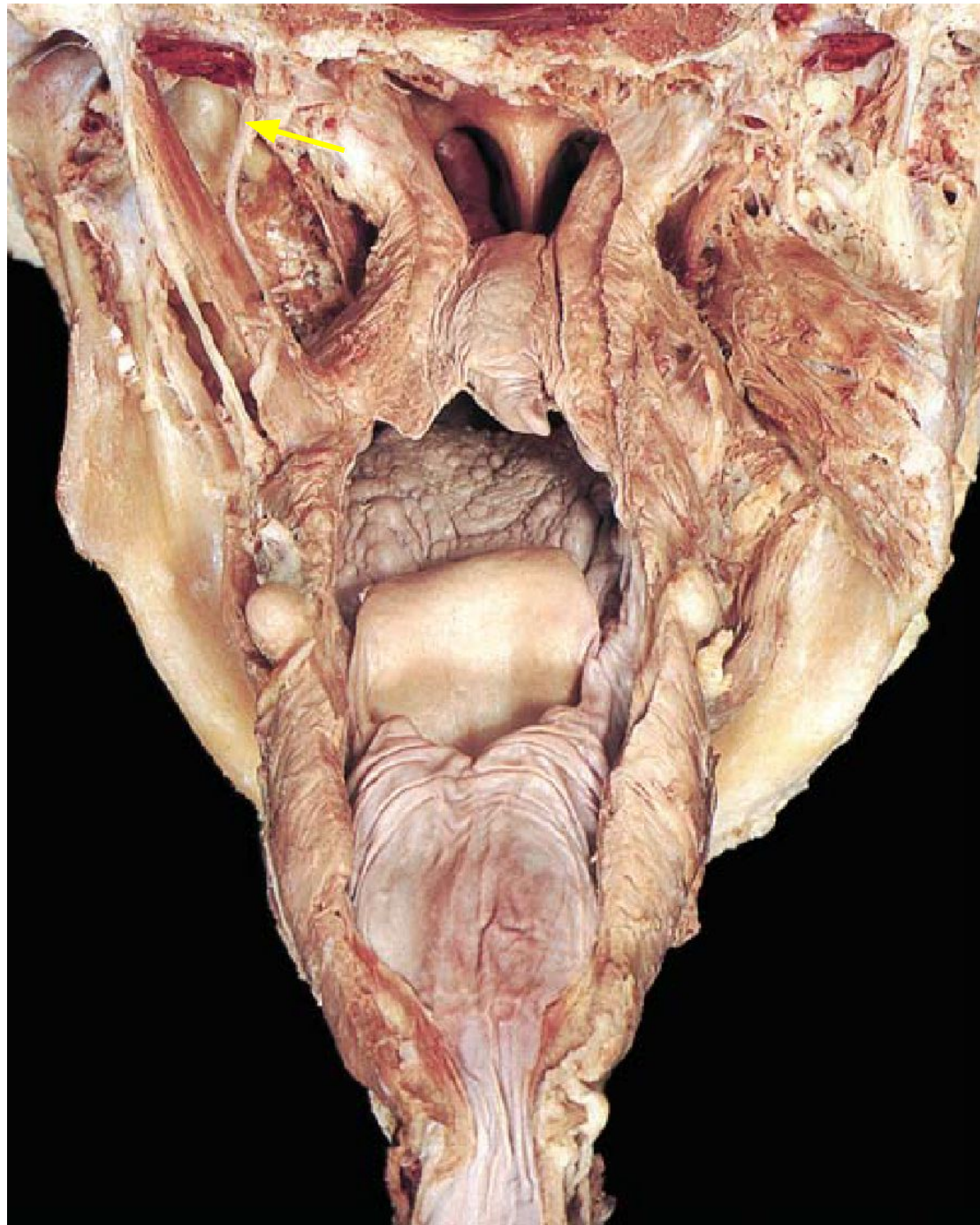
fossula petrosa ossis temporalis

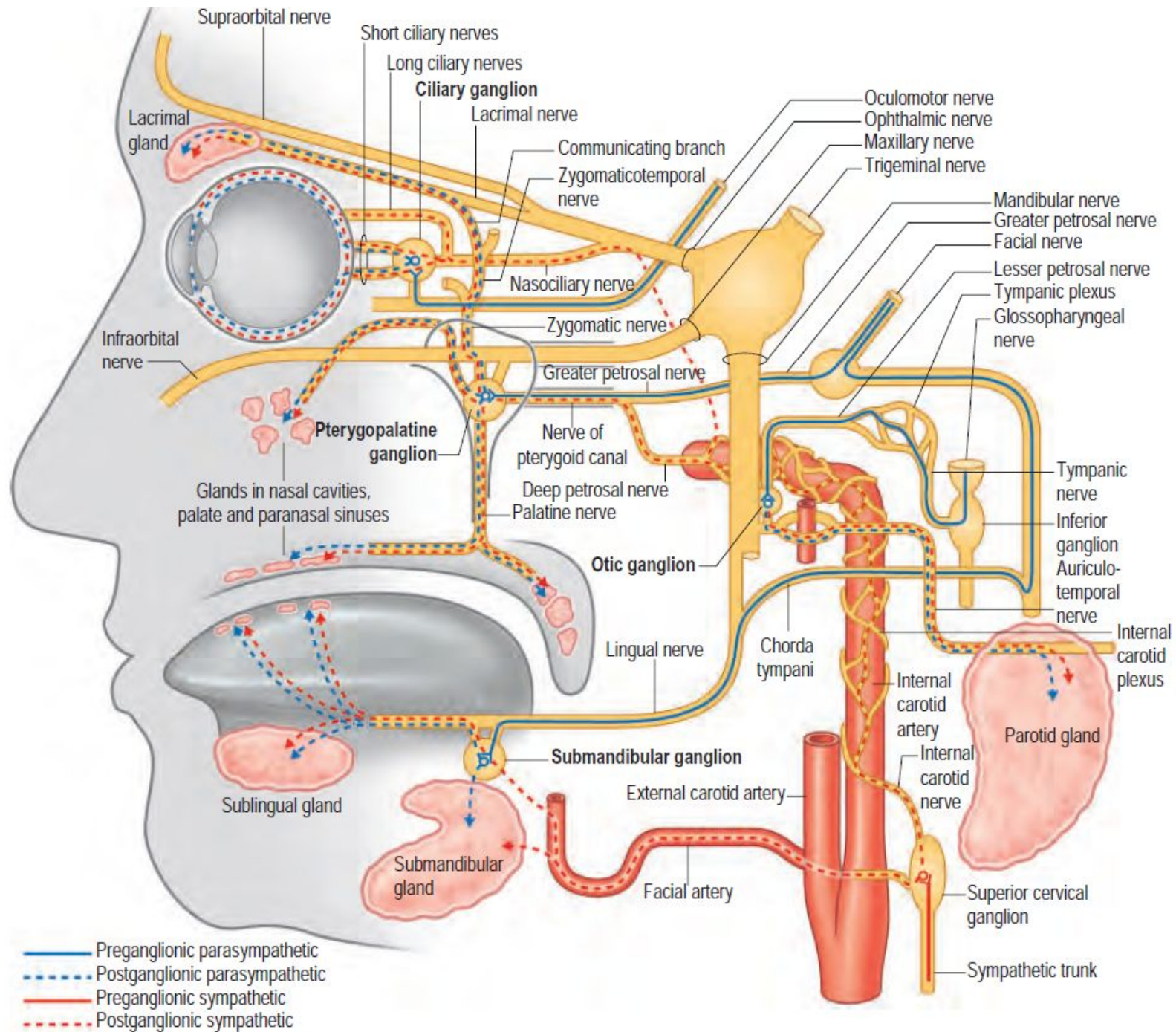


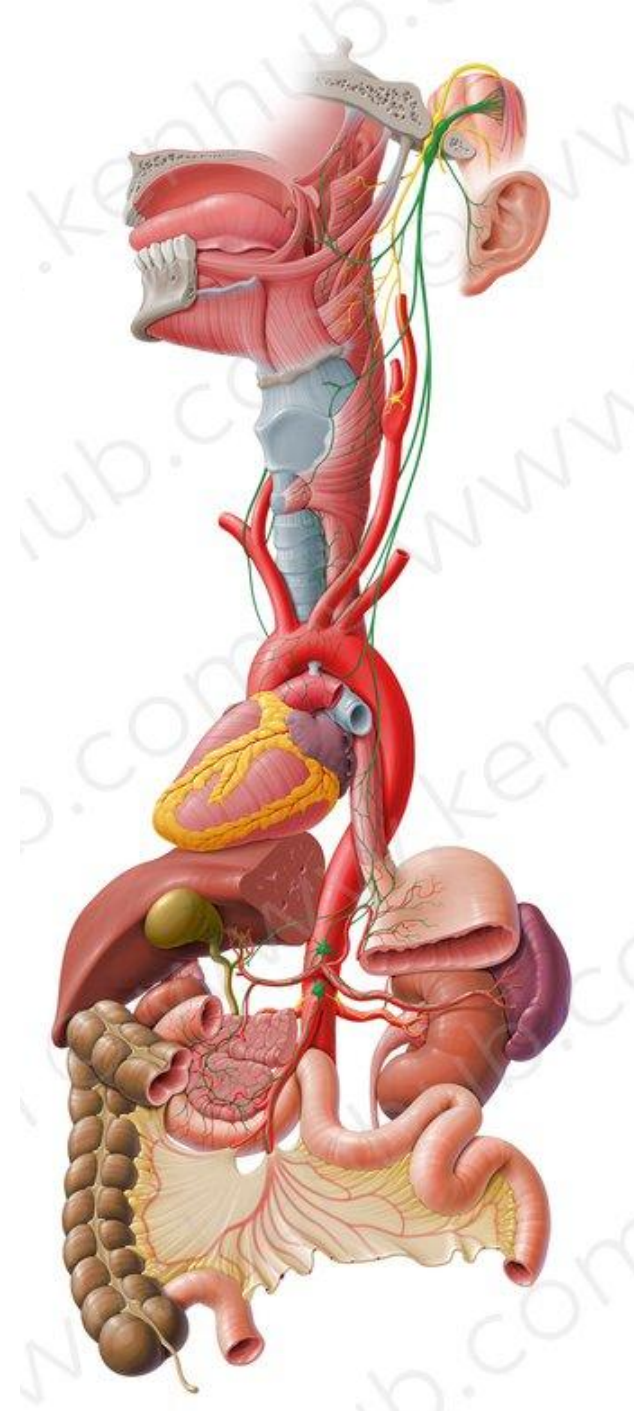
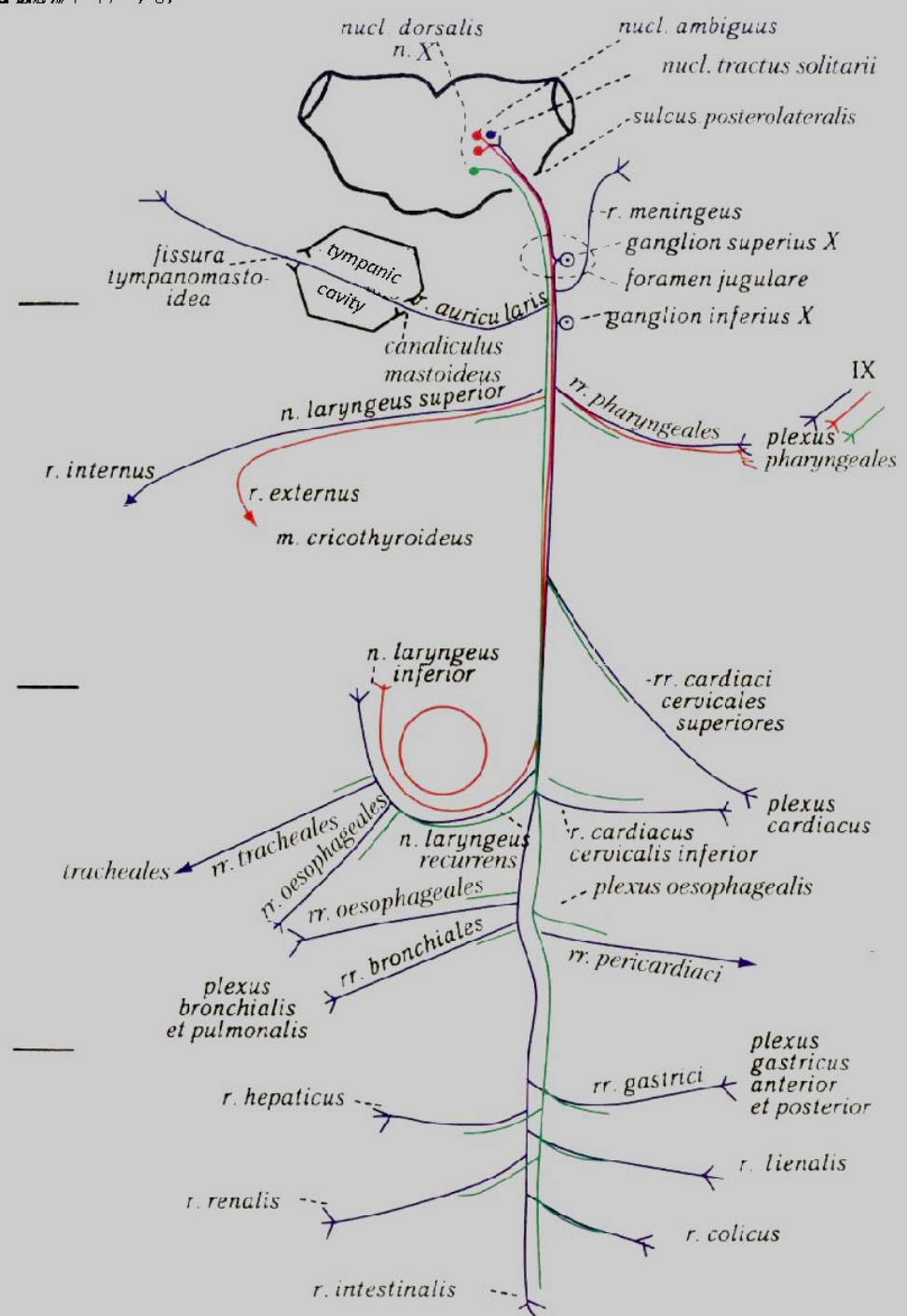
- Tympanic
- Stylopharyngeal
- Tonsillar
- carotid sinus nerve
- Branches to the posterior third of tongue
- Lingual branches
- A communicating branch to the Vagus nerve





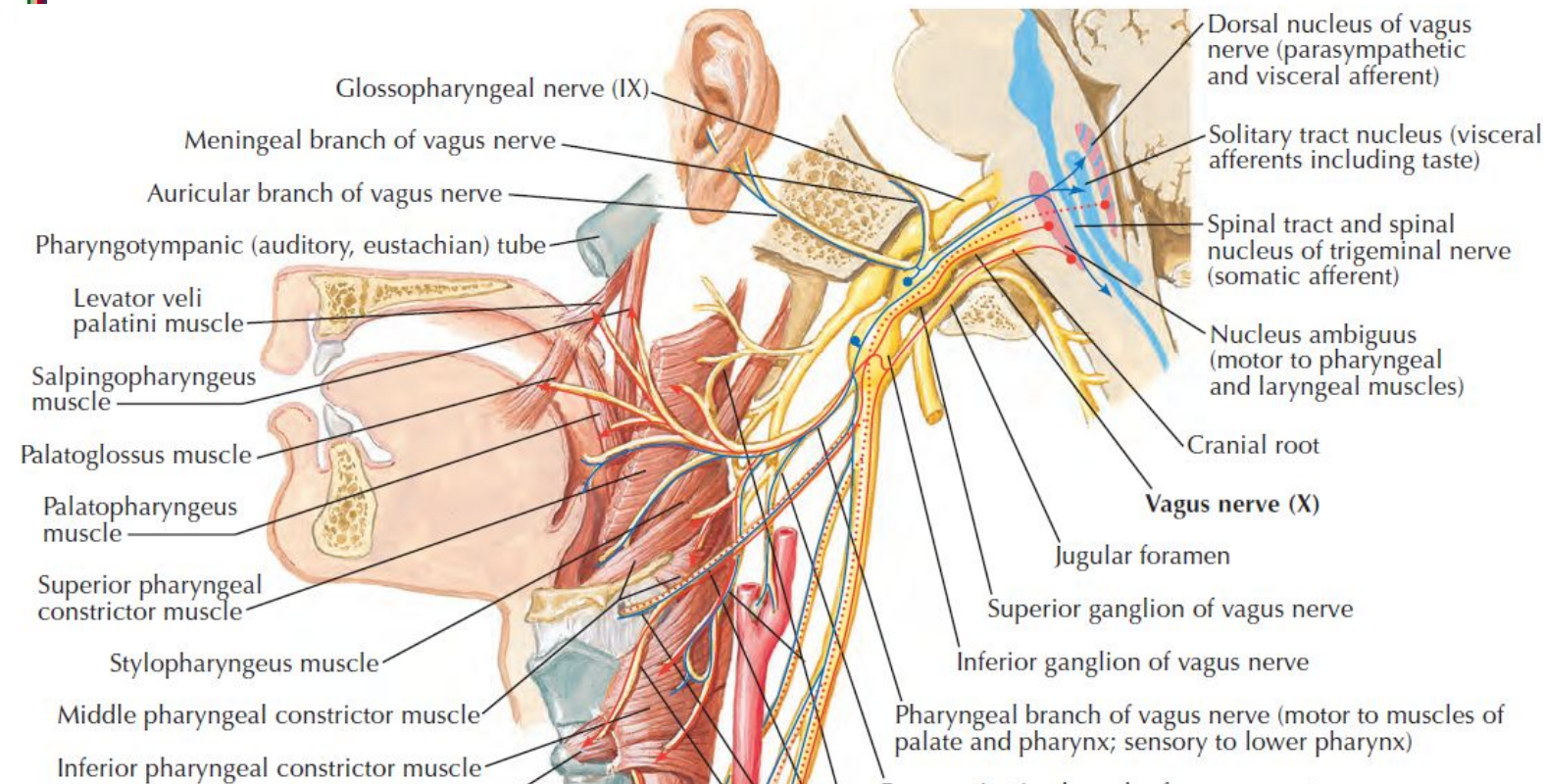
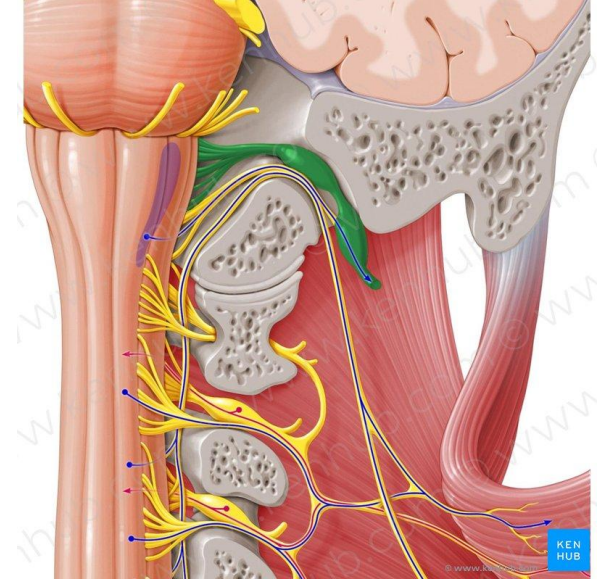
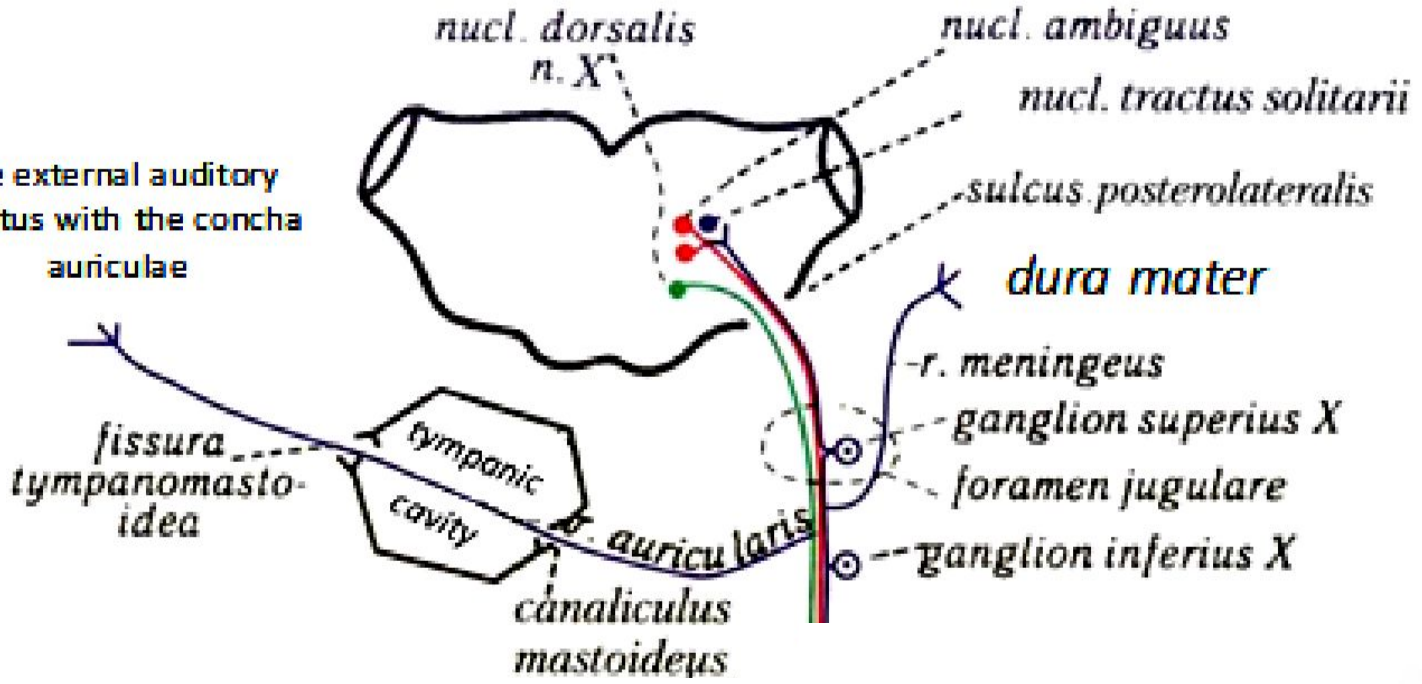






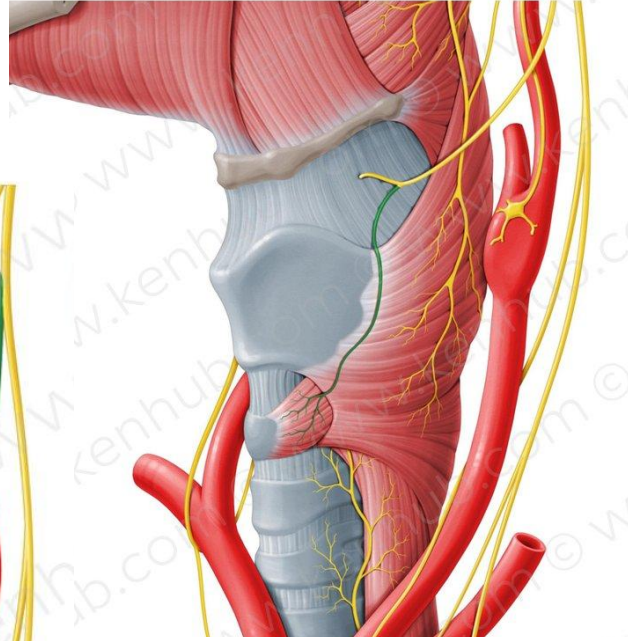
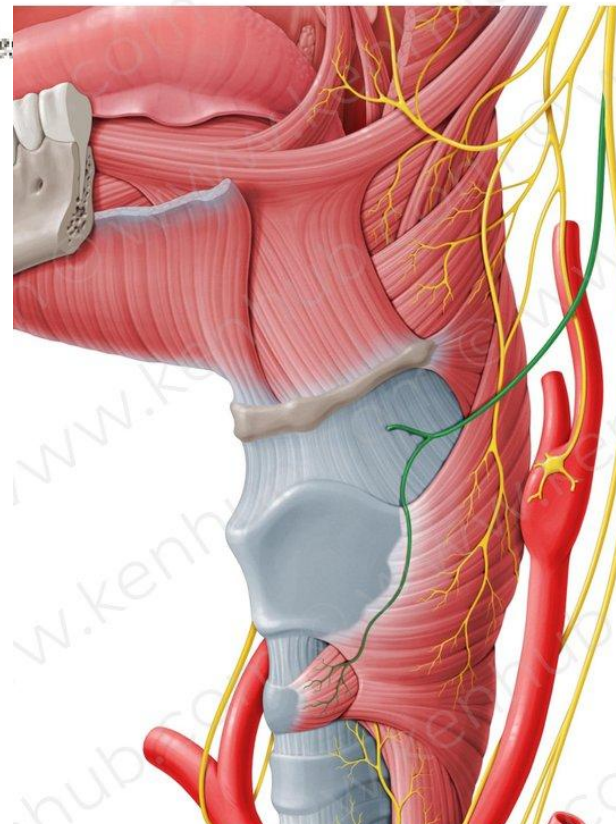
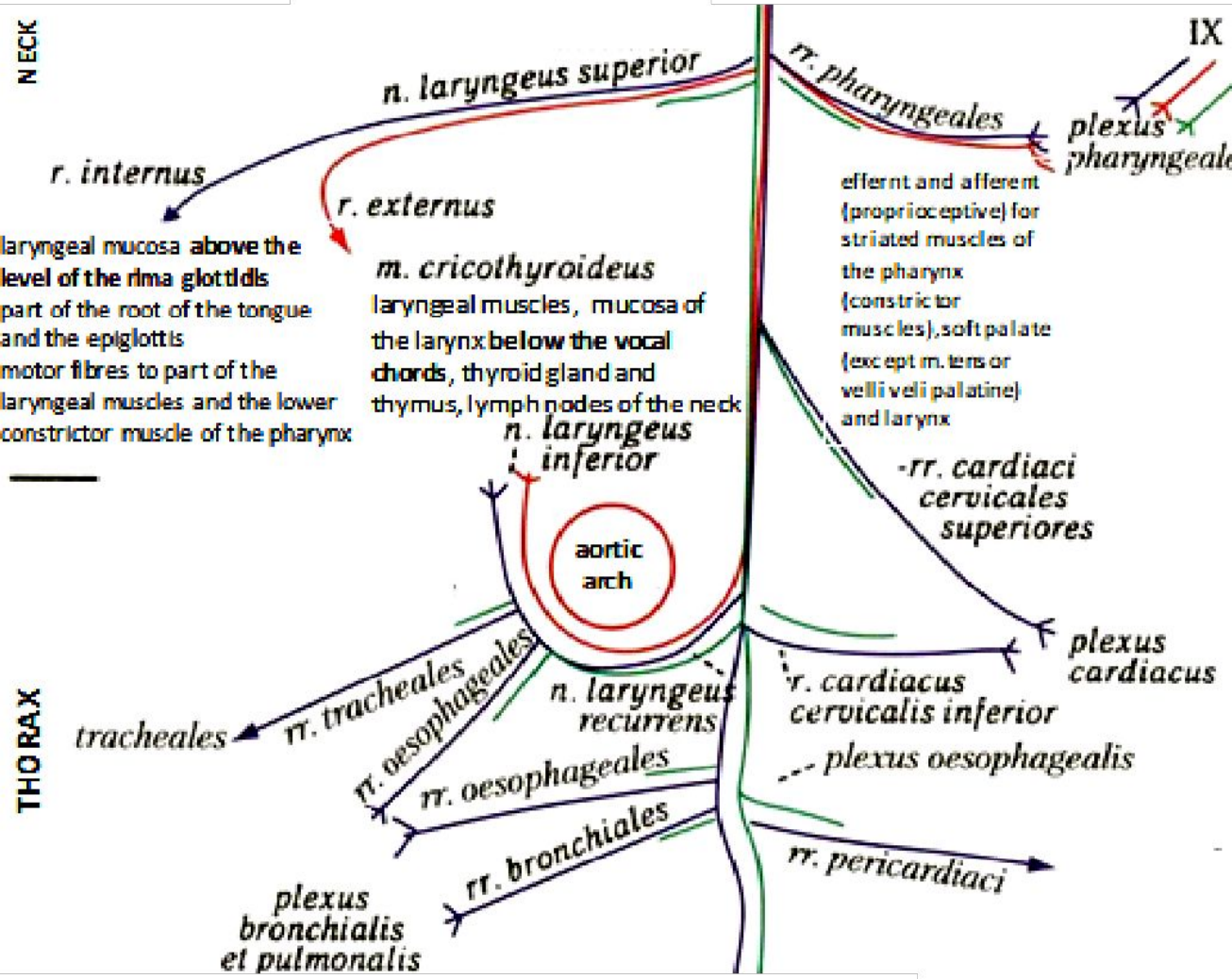
HEAD

the external auditory meatus with the concha auriculæ



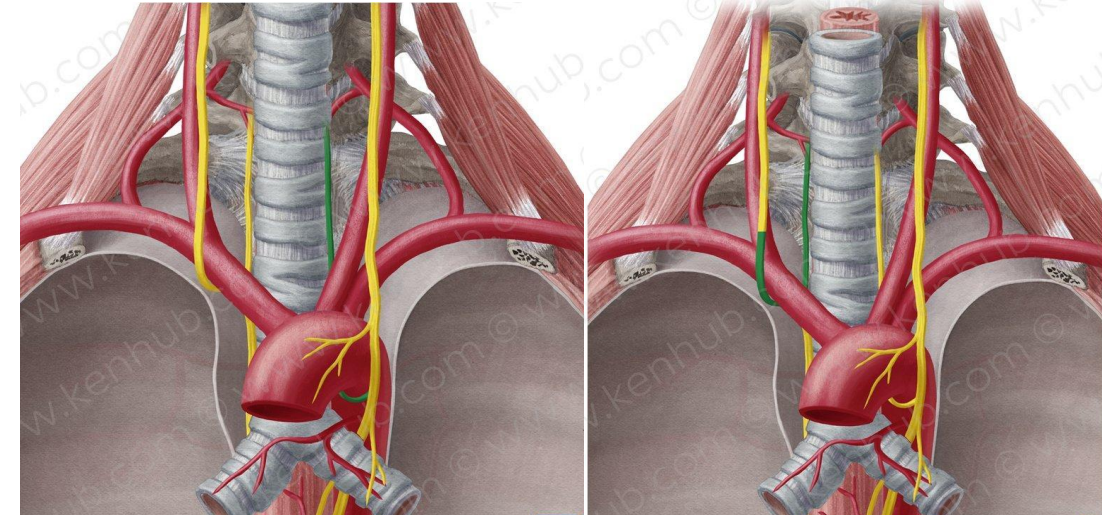
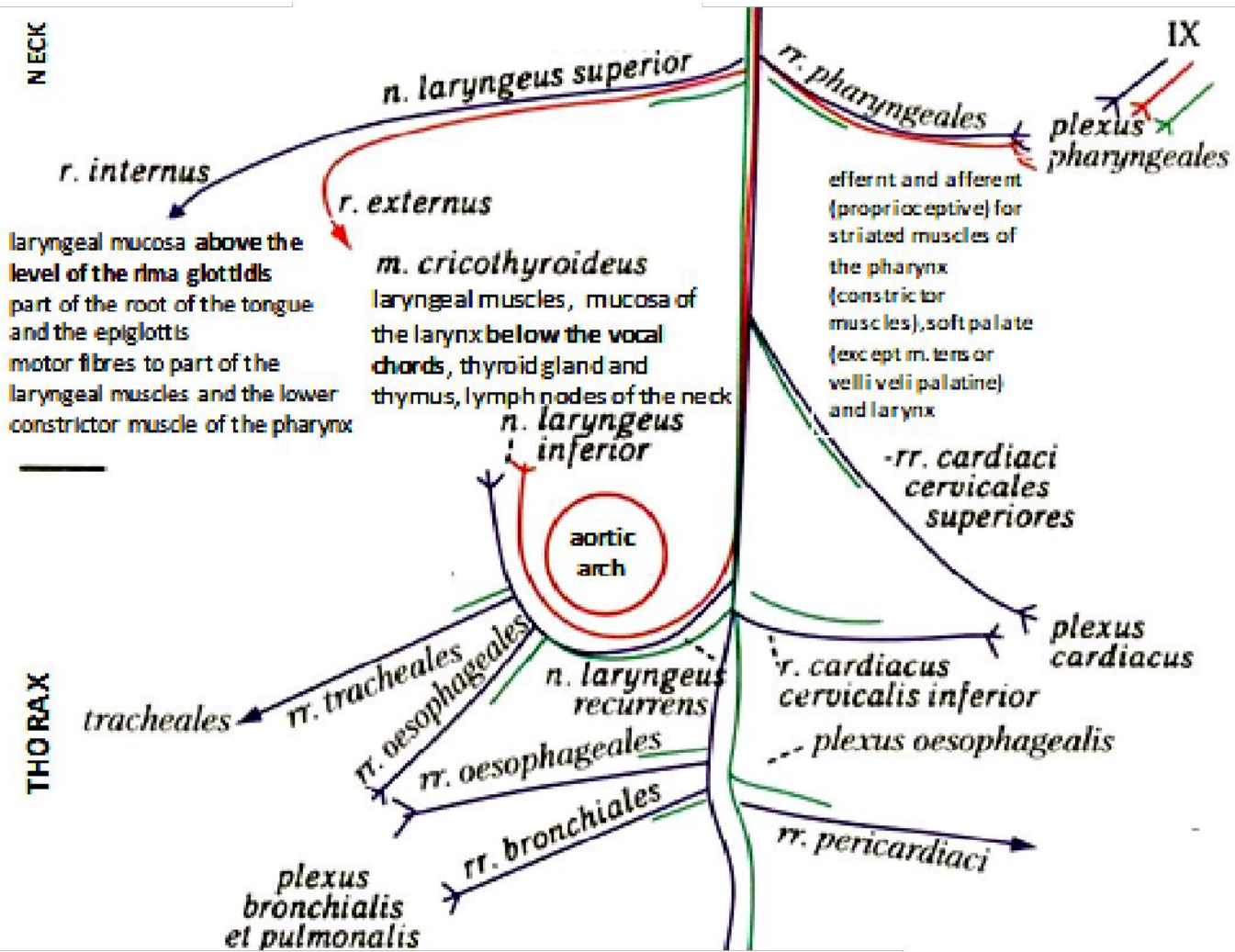
NECK

THORAX



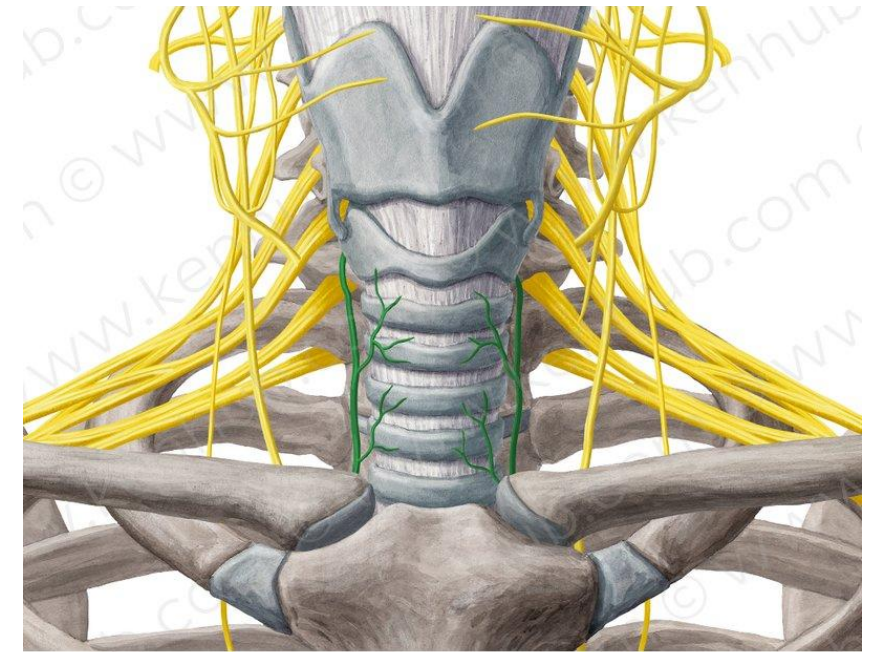
External branch of superior laryngeal nerve (Ramus externus nervi laryngei superioris)

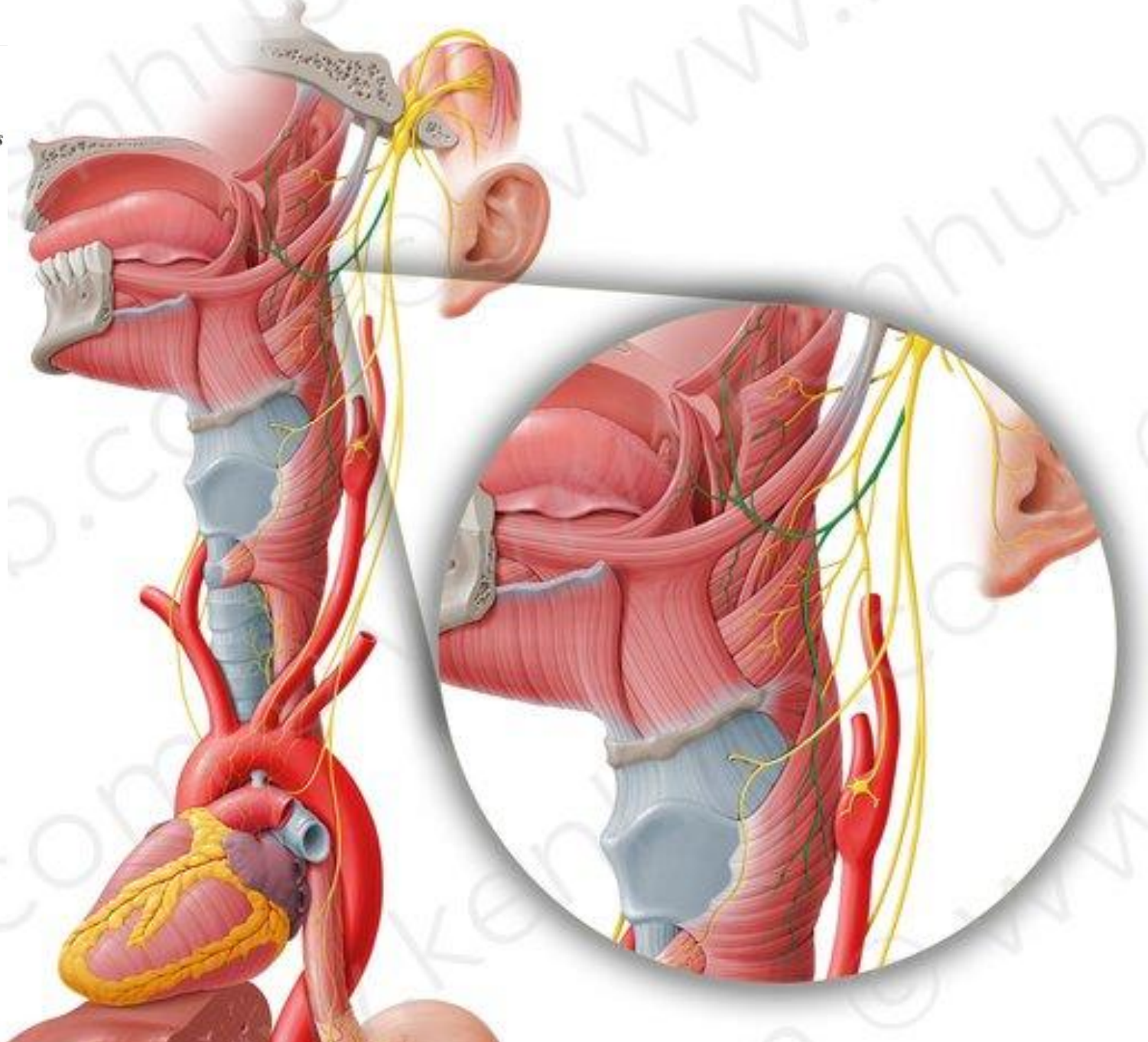
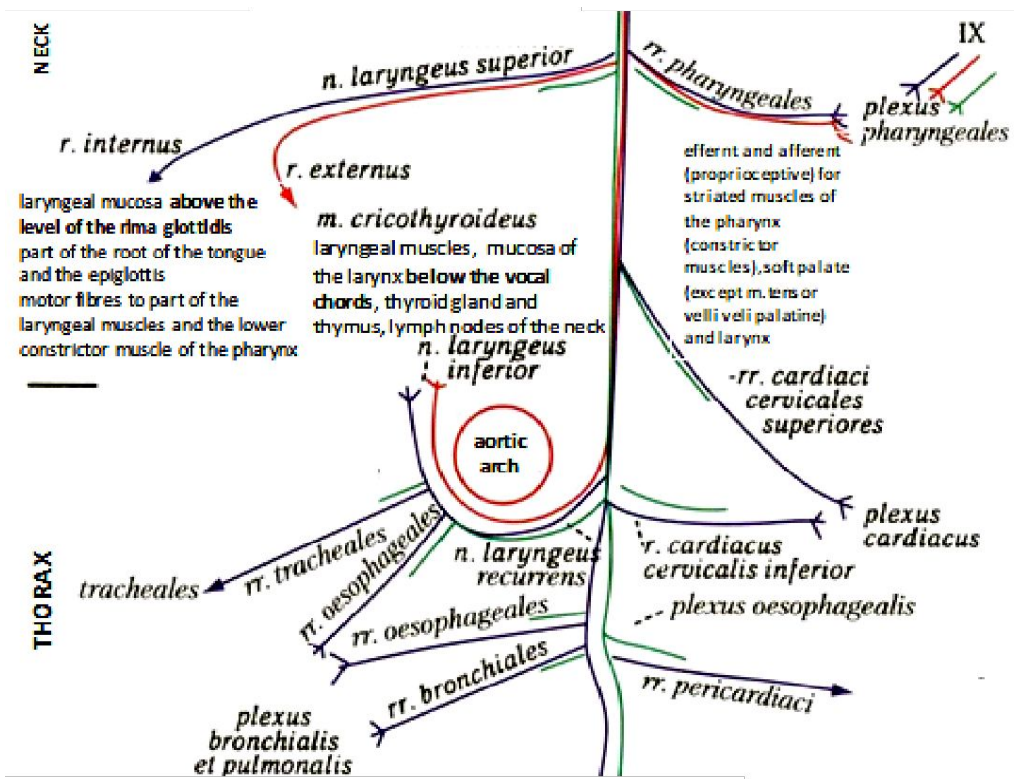
Superior laryngeal nerve

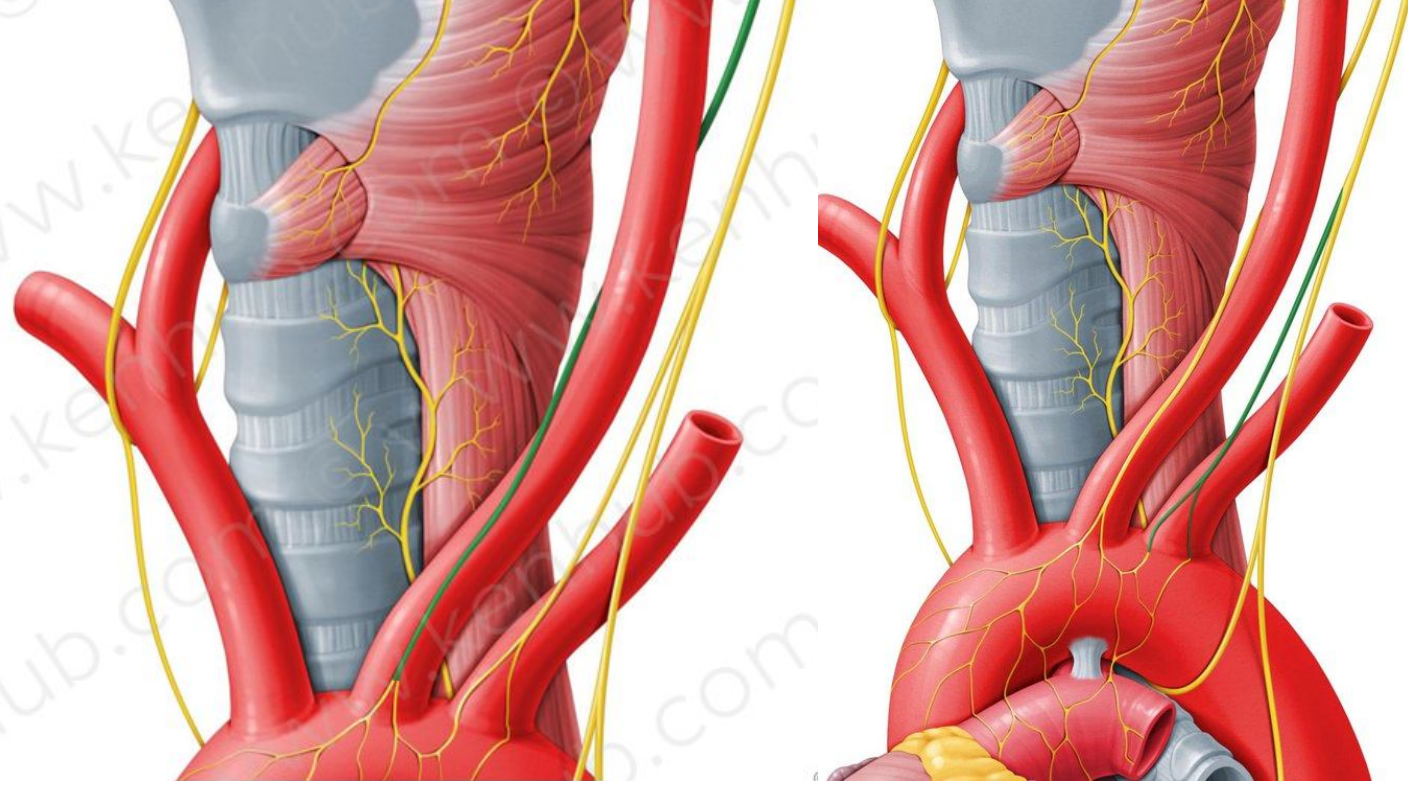
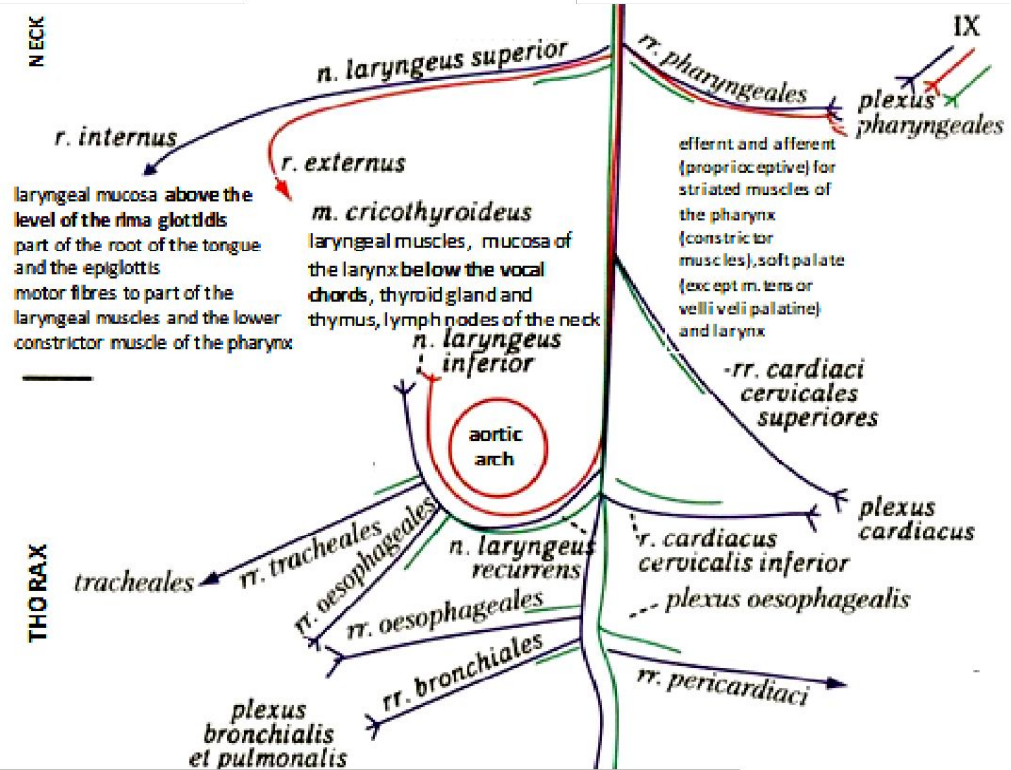


Left recurrent laryngeal nerve (Nervus laryngeus recurrens sinister)

Right recurrent laryngeal nerve (Nervus laryngeus recurrens dexter)

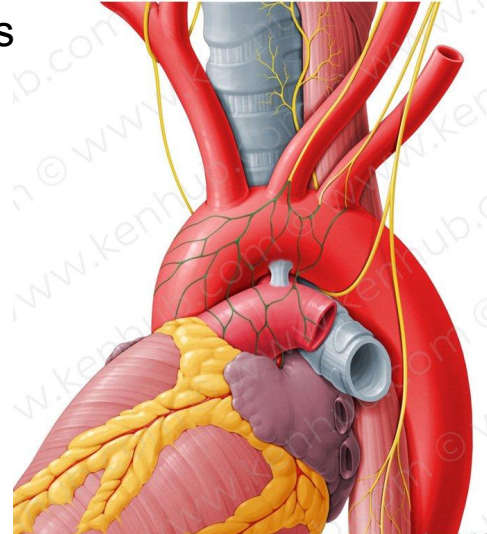




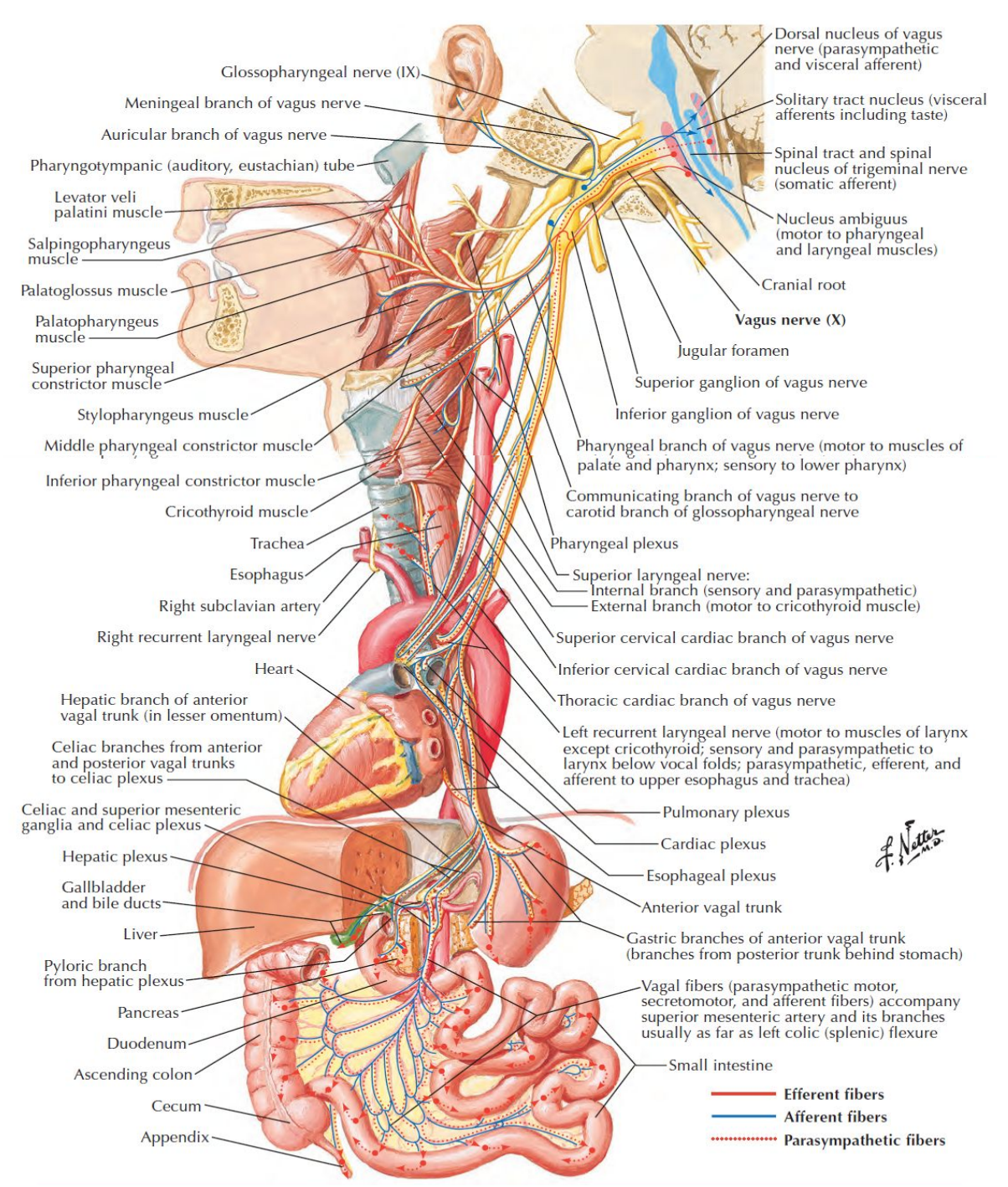
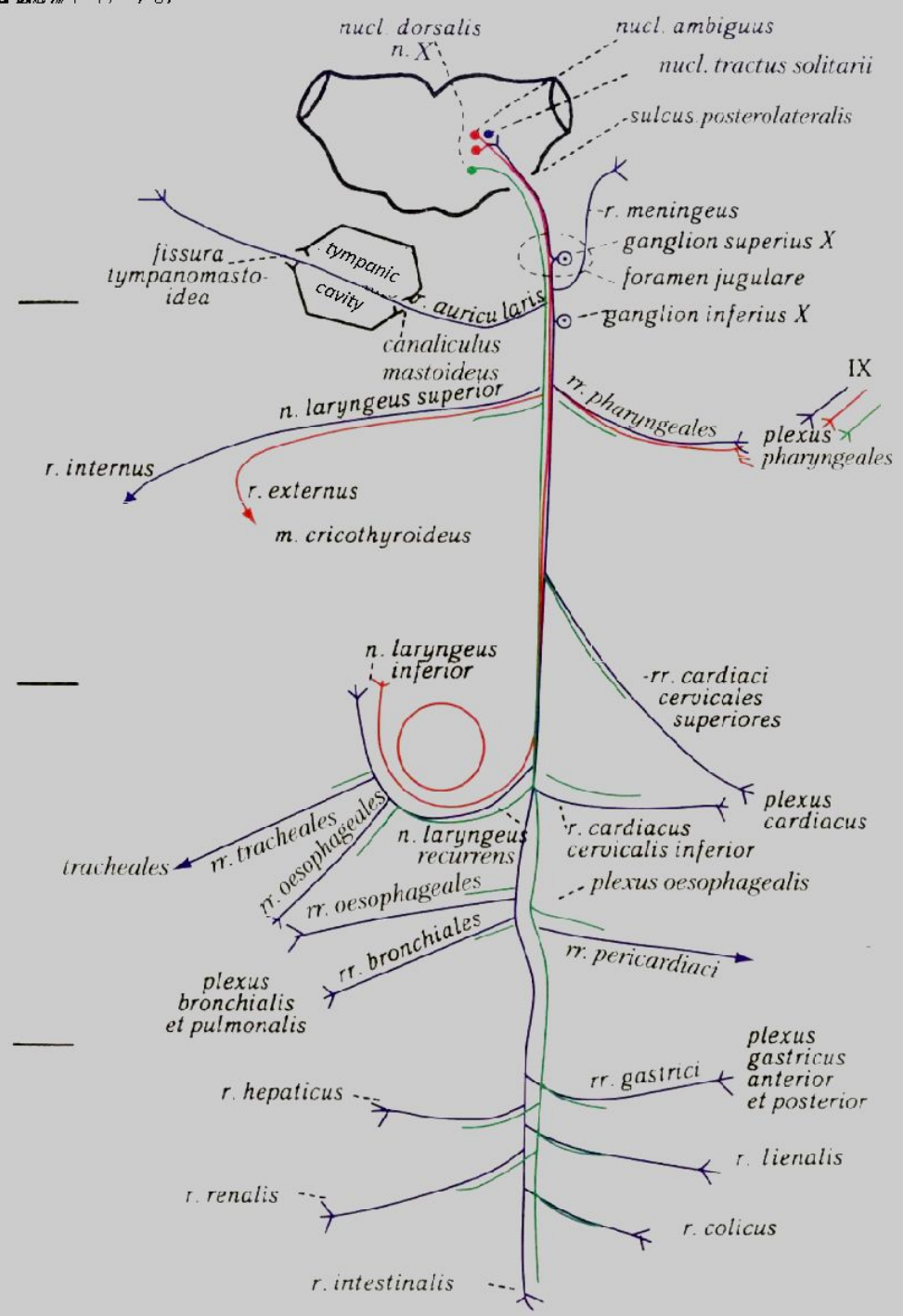


Superior cervical cardiac branch of vagus nerve (Ramus cardiacus cervicalis superior nervi vagi)

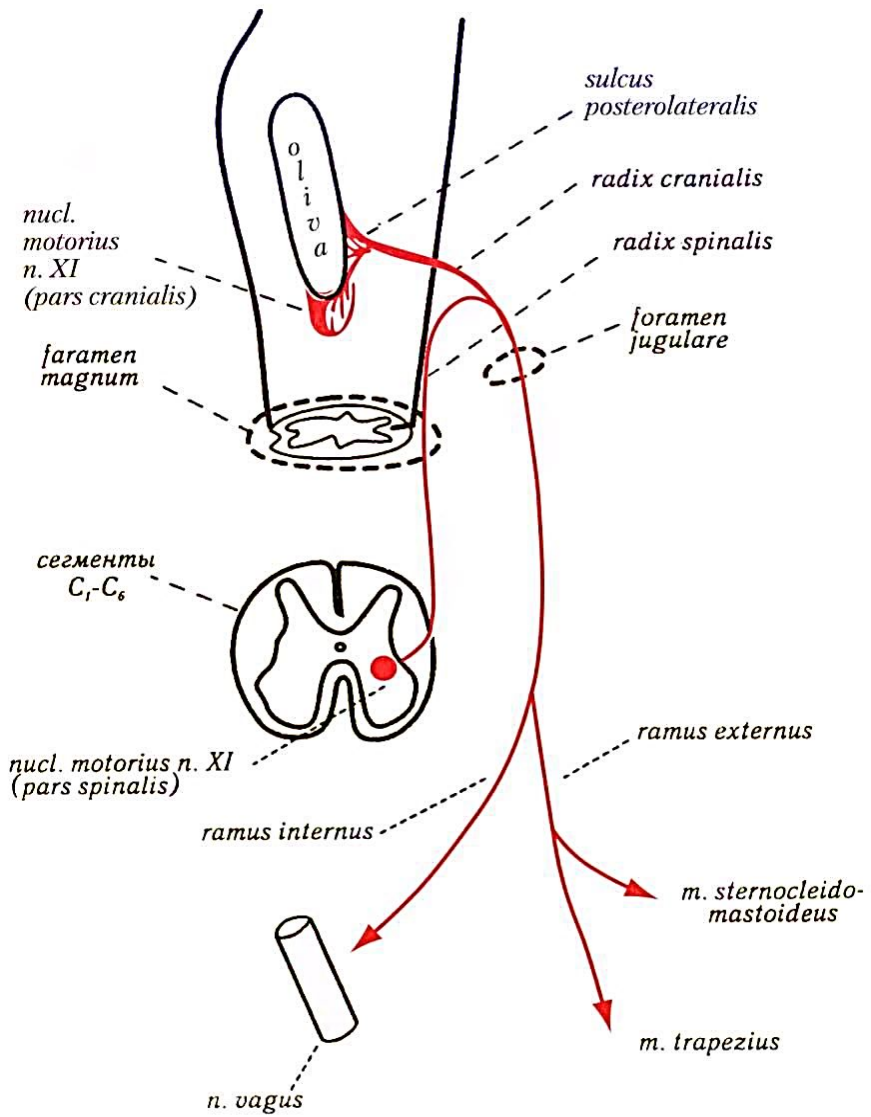
Inferior Cardiac nerve (lateral-left view)



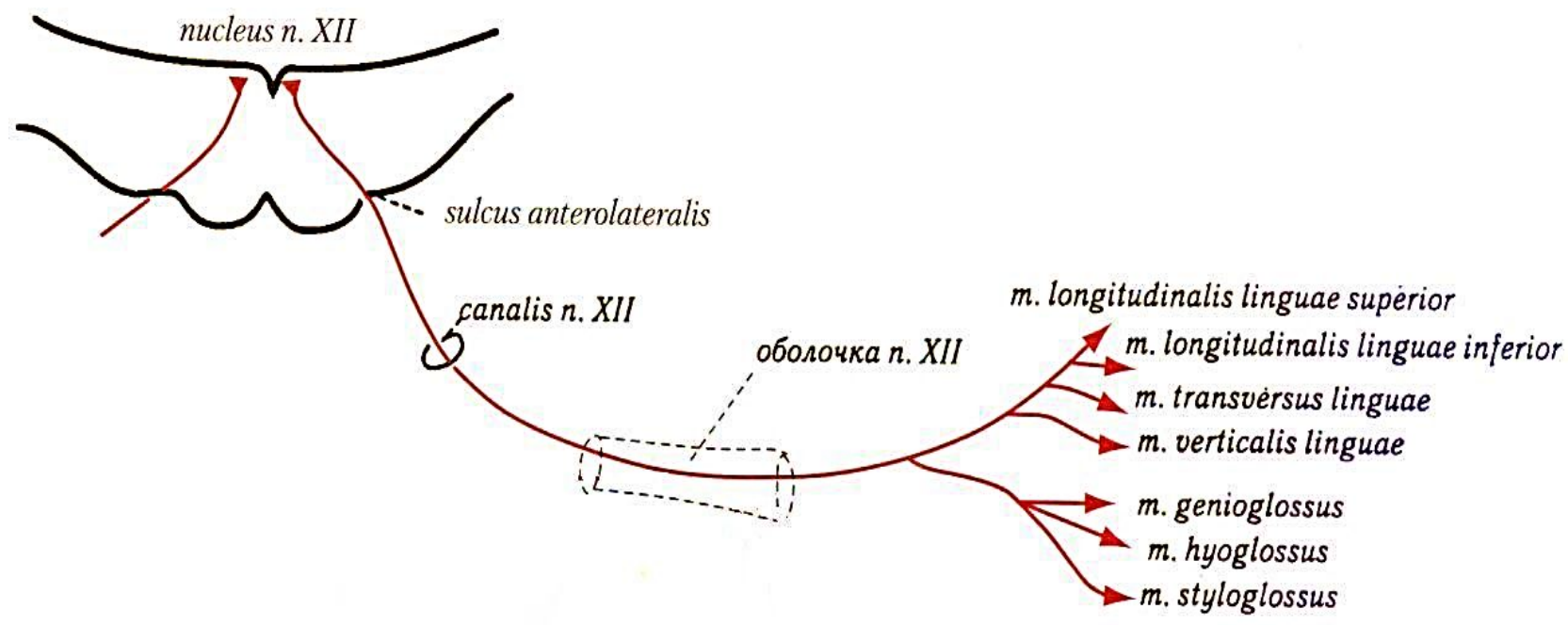
Cardiac plexus (Plexus cardiacus)



accessory nerve

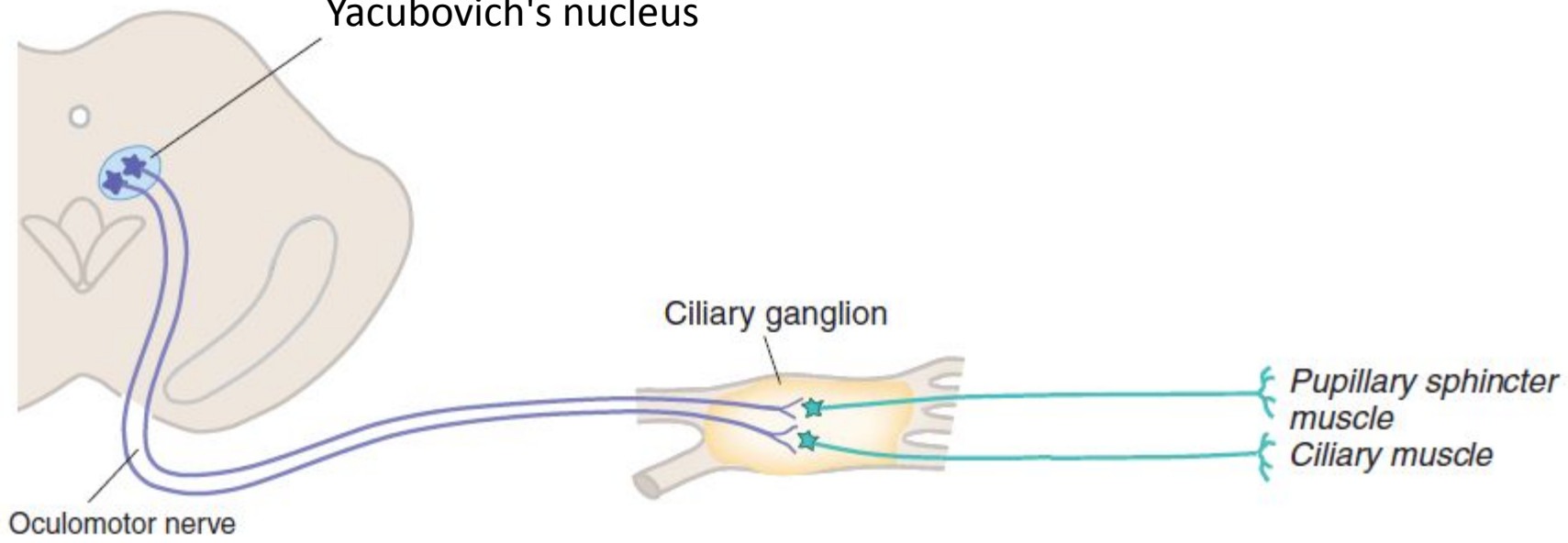


hypoglossal nerve



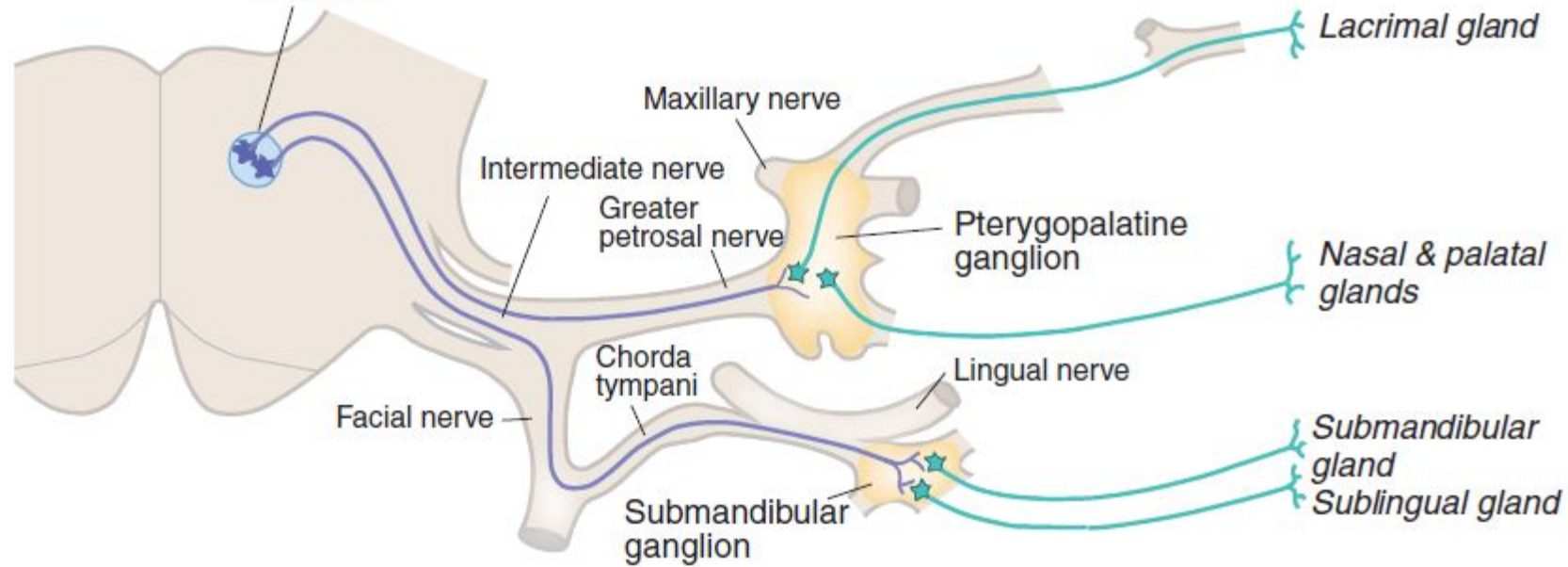
Yacubovich's nucleus

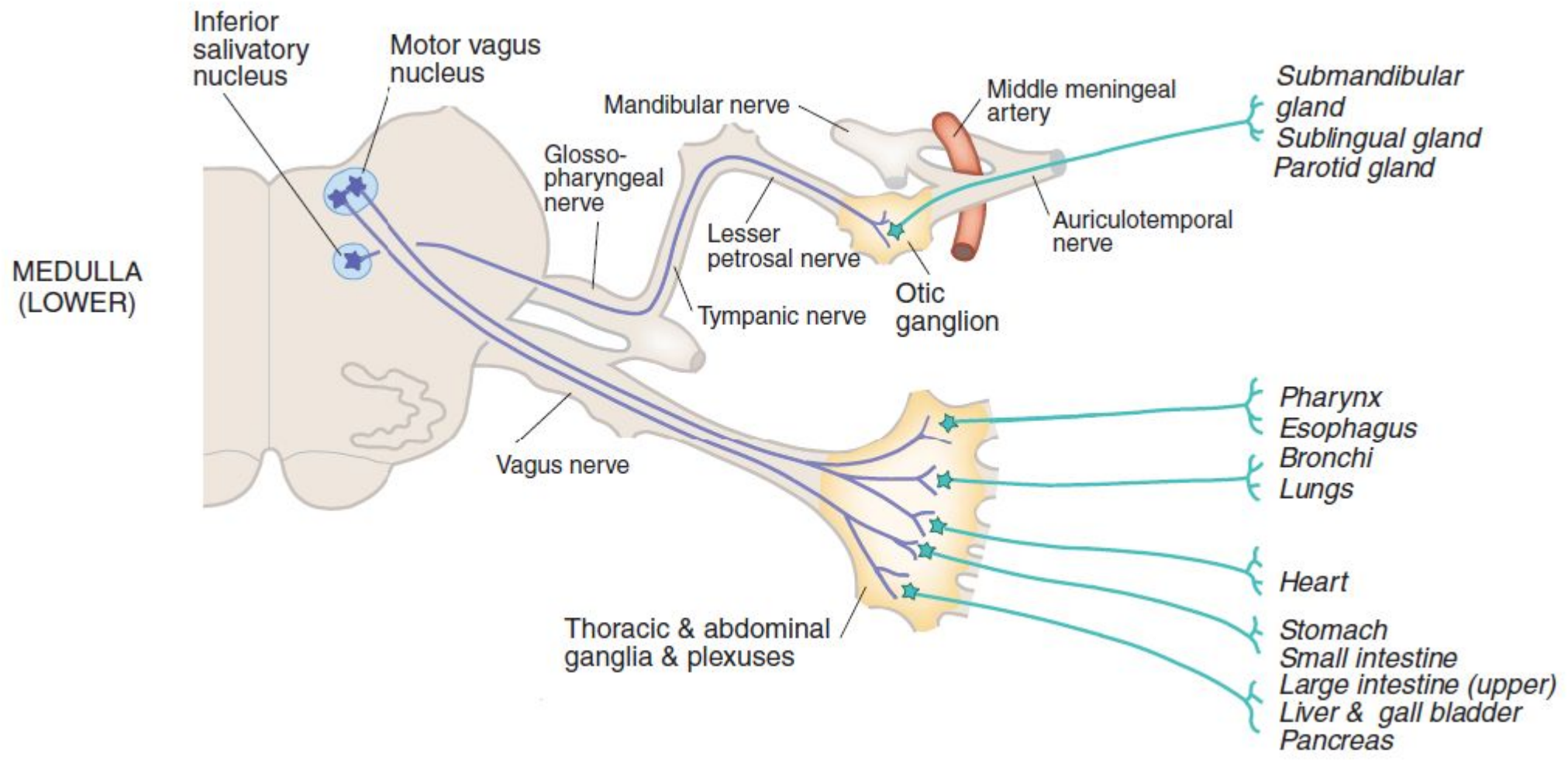
MESENCEPHALON

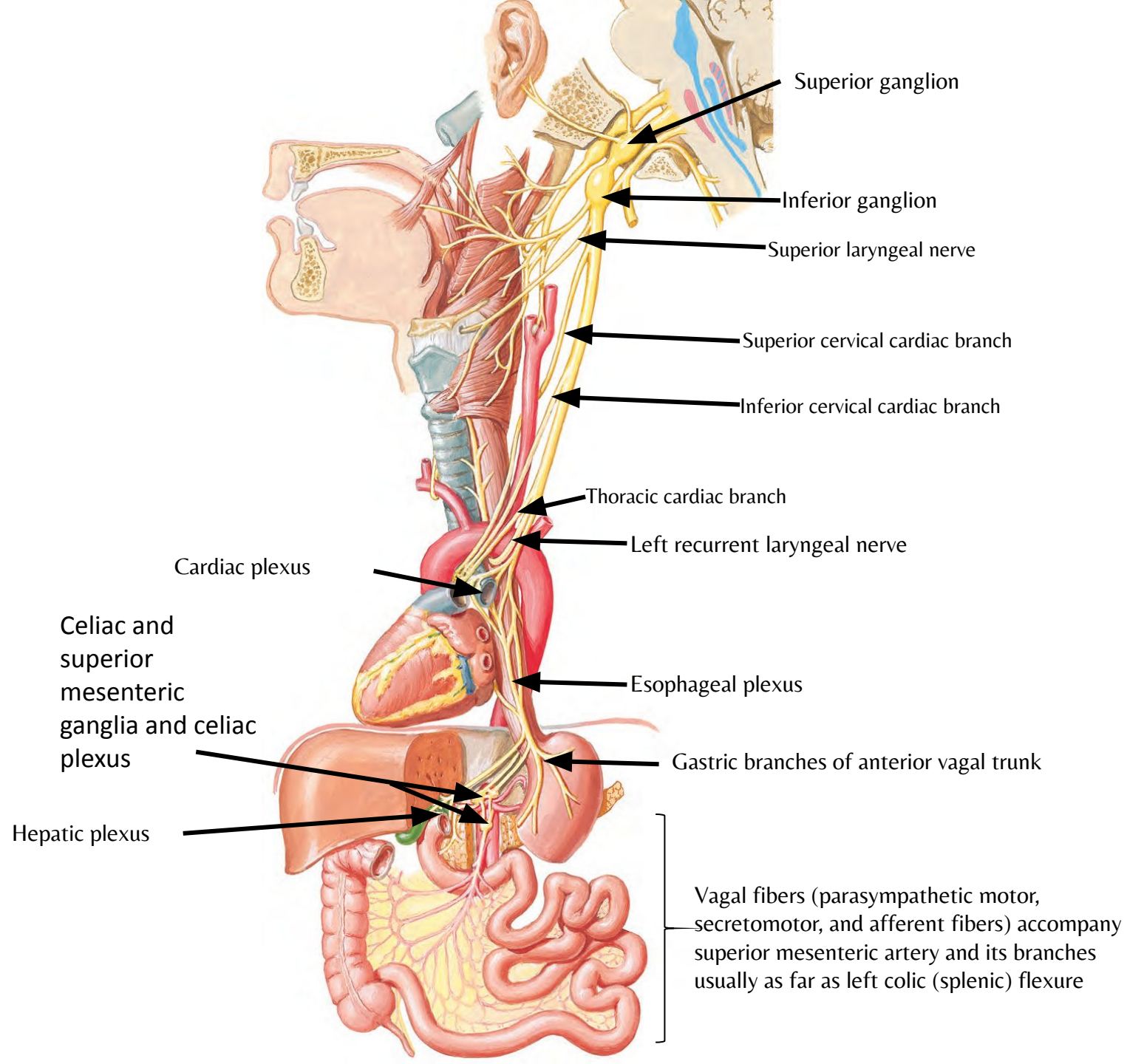


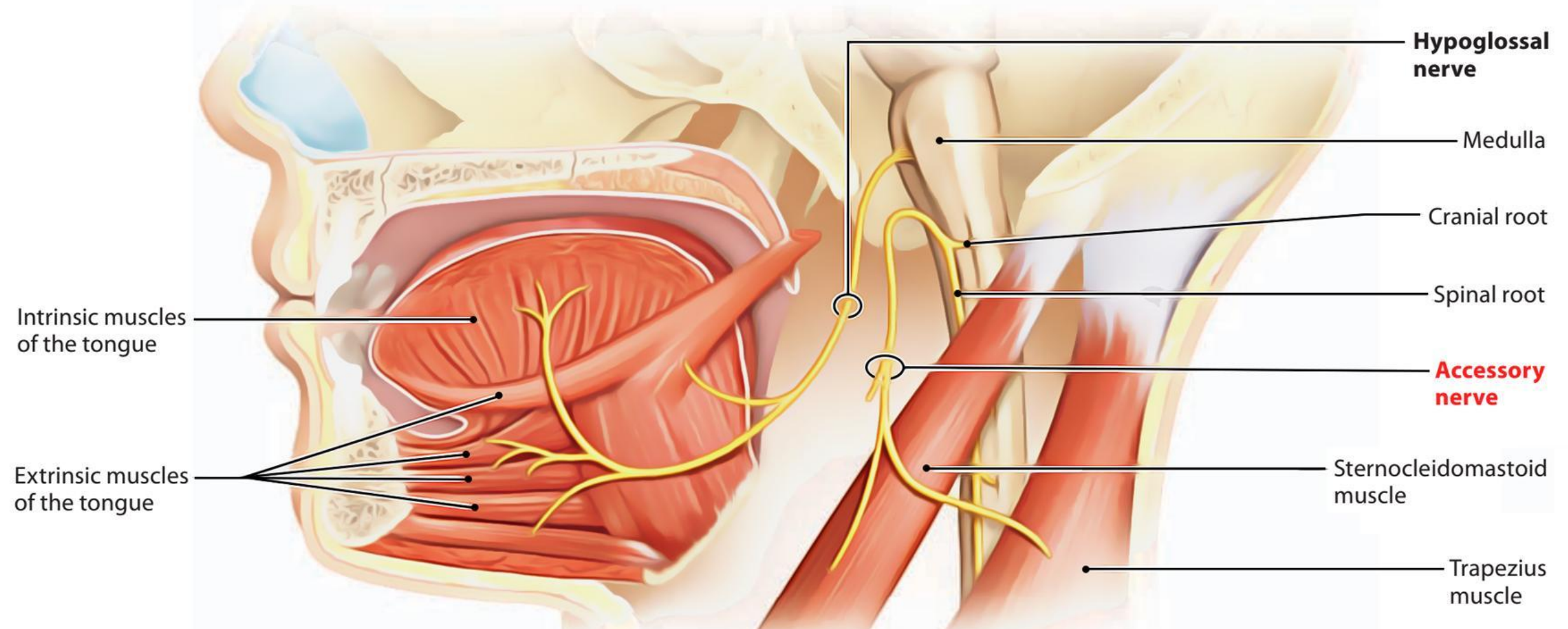
Superior salivatory nucleus

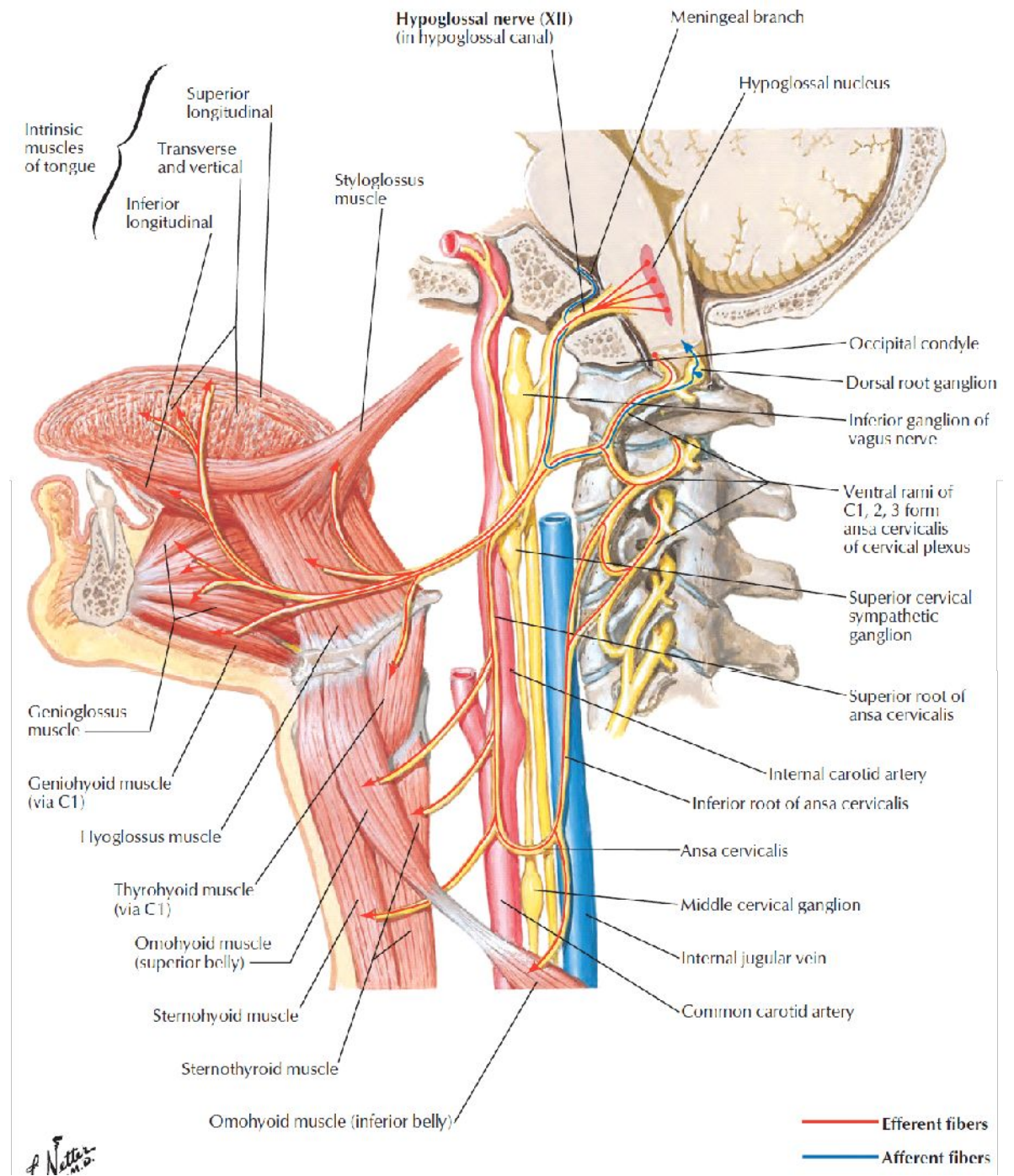
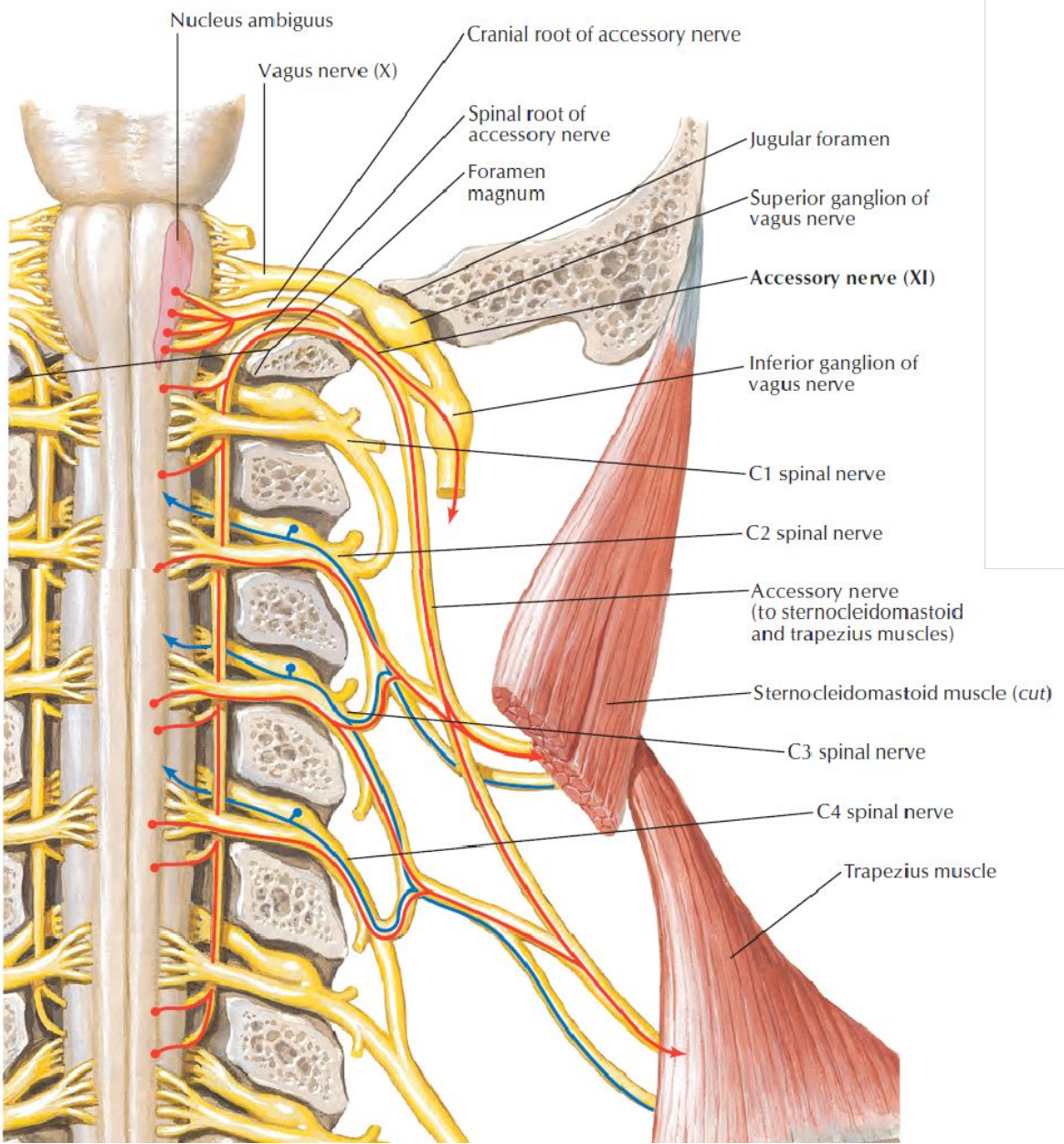
MEDULLA (UPPER)

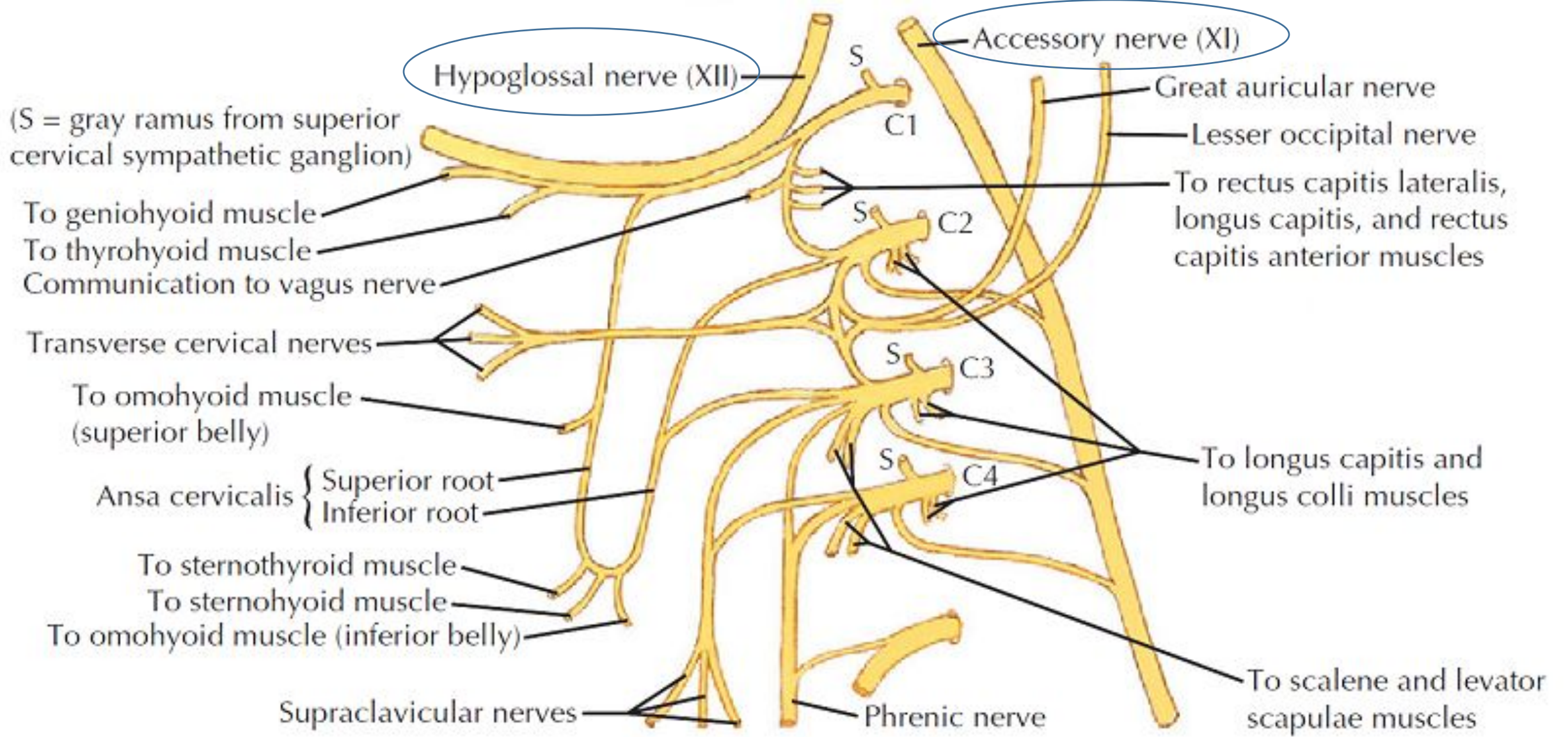












Cervical plexus