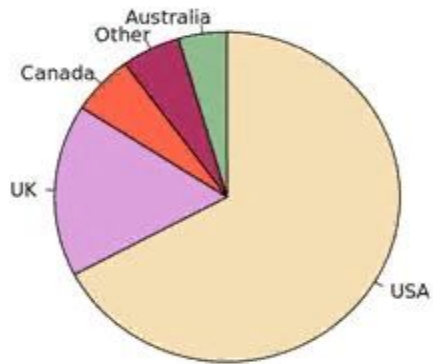
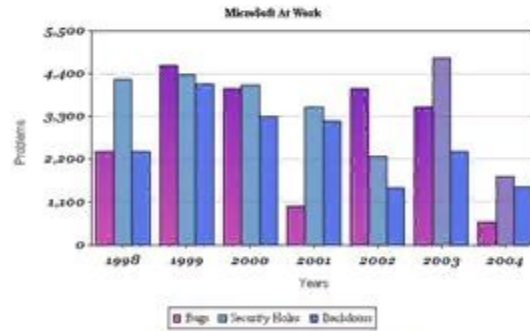


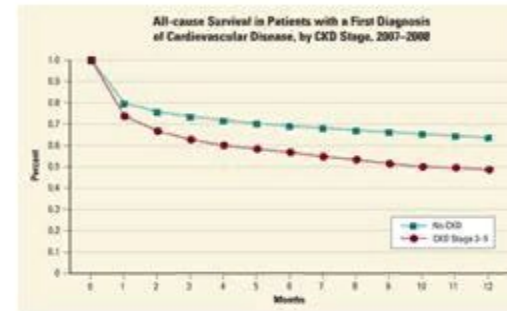
Let's identify the types of charts



Pie chart



Bar chart



Line graph

Example table
This is an example of a data table.

Disability Category	Participants	Bullets Completed	Bullets Incomplete/Terminated	Results	
				Accuracy	Time to complete
Blind	5	3	4	34.5%, n=2	1295 sec, n=1
Low Vision	5	2	3	80.7%, n=2 (97.7%, n=3)	1755 sec, n=3 (1974 sec, n=2)
Deafness	5	4	1	80.3%, n=4	1672.3 sec, n=4
Mobility	3	3	0	95.4%, n=2	1406 sec, n=3

Table

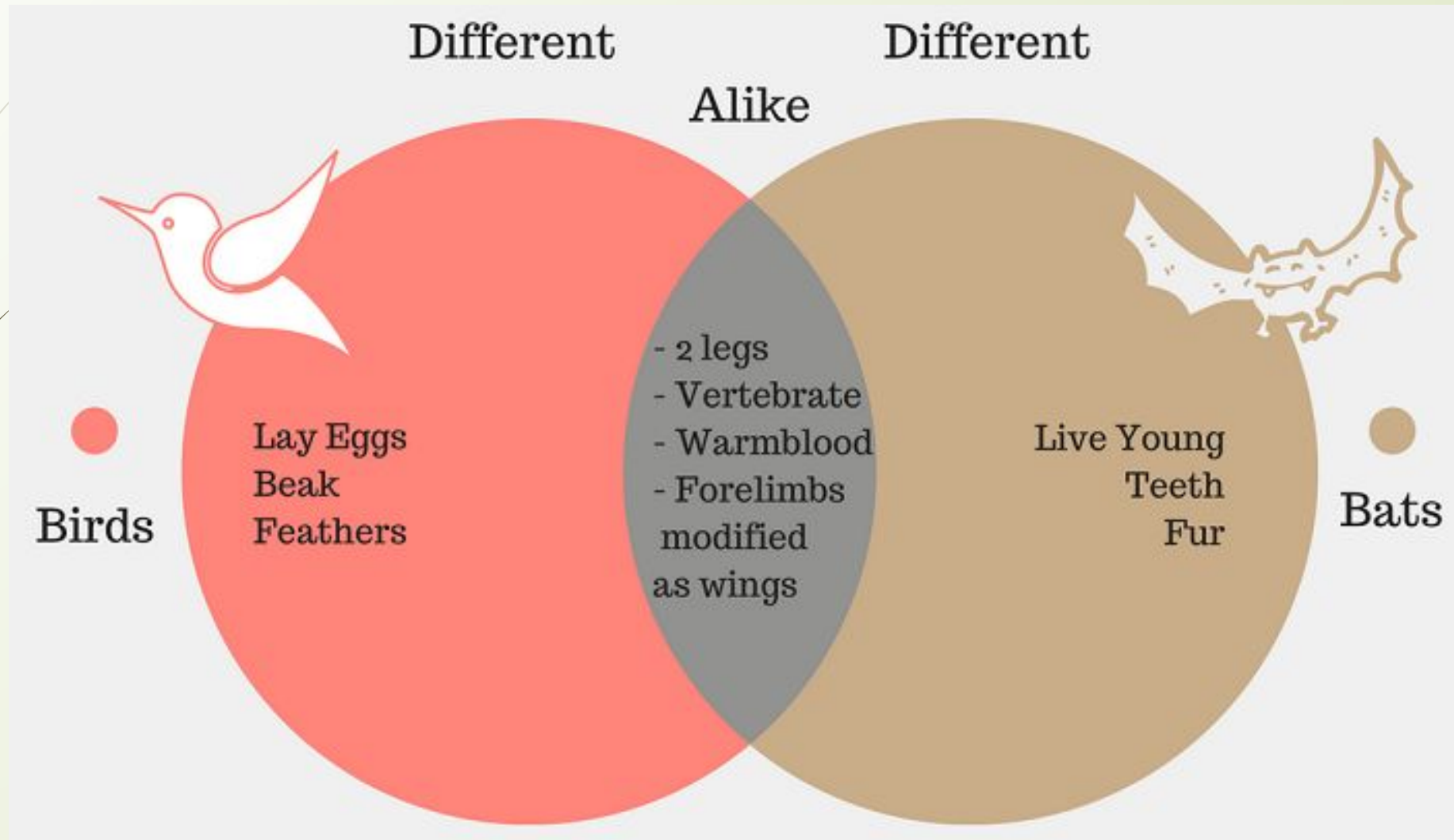


Flow chart



Map

Venn diagram





ЕГЭ-2022

Раздел 4. Письменная речь

Задание 40

Imagine that you are doing a project on **what people do to make their neighbourhoods clean and green places**. You have found some data on the subject- the results of the opinion polls (see the table below).


Comment on the data in the table and give your opinion on the subject of the project.

What people do	Number of respondents (%)
Bin litter	71.1
Recycle	44.4
Compost in the backyards	41.2
Plant trees and flowers	37.2
Organize clean-ups in nearby parks	13.3

Write 200-250 words.



Use the following plan:

- make an opening statement on the subject of the project;**
 - select and report 2–3 facts;**
 - make 1–2 comparisons where relevant;**
 - outline a problem that can arise with going green and suggest a way of solving it;**
 - conclude by giving your opinion on the importance of making neighbourhoods clean, green places for people.**
- 

1 paragraph

□ **make an opening statement on the subject of the project**

- People living on the Earth have caused environmental problems and only man can solve them.
- **I am doing a project on** what people do to make their neighbourhoods clean and green. I have found some data on the subject and would like to analyze the results of my research.


48 words

2 paragraph

- select and report 2–3 facts

- **According to the information presented in the table, all respondents try to reduce their impact on the environment. They sort their rubbish out and use dustbins wherever they are. The figures are 44.4% and 71% respectively.**
- **People also put their vegetable peels, coffee grounds on a compost heap in the backyards which comprises 41.2%.**

54 words

- 
- make 1–2 comparisons where relevant:

3 paragraph

- **The thorough analysis of the data shows that** quite a number of people are aware of the environmental problems and understand how time-consuming it is for local councils to remove litter from the streets. The number of people who usually use dustbins is **26.7% more than** those ones who recycle their rubbish by taking it to a local recycling point.
- **By contrast, only 13.3%** of the respondents organize a litter collection day in their neighbourhoods.


74 words

4 paragraph

- outline a problem that can arise with people going green and suggest a way of solving it:

- **Overall, the results of the opinion polls reveal** that people are not active enough in making their neighbourhoods more welcoming places to live in.
- **The problem should be solved** by getting people more informed how crucial it is to live in clean and blooming areas, breathing fresh air due to trees, bushes, flowers which filter out pollutants and create places for small animals and insects to live in.

68 words

- 
- draw a conclusion giving your personal opinion on the importance of making neighbourhoods clean and green

5 paragraph

- **In conclusion, I believe that** it is our responsibility to care for the environment and reduce our impact on it.
- **My project shows that** it is necessary to combine our efforts, set ourselves a few achievable targets and remember that every little bit helps.

44 words

Volume-288 words



1 paragraph



- **make an opening statement on the subject of the project**

- Opening statement.

- **I am doing a project on...**

2 paragraph

- select and report 2–3 facts

- **According to the information presented in the table, The figures ...% and ...% respectively.**
- **...which comprises ...%.**

54 words

3 paragraph

- make 1–2 comparisons where relevant:

- **The thorough analysis of the data shows that The number of people who ... is ...% more than those ones who...**
- **By contrast, only...% of respondents...**

4 paragraph

- outline a problem that can arise with people going green and suggest a way of solving it:
- Overall, the results of the opinion polls reveal that ...
- The problem should be solved by...

68 words

5 paragraph

- draw a conclusion giving your personal opinion on the importance of making neighbourhoods clean and green

□ **In conclusion, I believe that...**

□ **My project shows that...**

44 words

Volume-288 words

What is being tested? It is your ability to:

- objectively describe the information presented in a table/diagram/chart;
- compare and contrast some data;
- outline a problem;
- suggest solutions to solve the problem;
- give your personal opinion on the issue;
- use a language appropriate to the description of tables/diagrams/charts.



Essay activator

Comparing and contrasting

- 1.compared to/with
- 2.by comparison /in comparison
- 3.In contrast/ by contrast
- 4. to make/draw a comparison

It is possible to draw a comparison between...

Concluding

- In conclusion,
- To summarize/To sum up,

How to compare

We can compare...terms of the number/percentage of...

...is by far the most...

The figures for/ the percentage of/the number of....tend/tends to be fairly similar.

The number of ... who... is slightly higher than...

...is the only...with a noticeably higher proportion/percentage of...

....as.....as....

...far more/less...than....

...twice as much/many....as....

It is clear from the table/diagram that the proportion of people who....is higher/lower than of those who...

The same/similar pattern can be seen for people who...



How to conclude

1. It can be assumed/concluded from the given data/information that there is/are not enough...

2. Even though I believe these figures/numbers may fluctuate depending on who the respondents are, there is still a problem of...

3. From the figures, it can be inferred that...

4. It is noticeable that...

5. Overall, the results of the opinion polls reveal that...

Homework

Выберите только ОДНО из двух предложенных заданий (40.1 или 40.2), укажите его номер в БЛАНКЕ ОТВЕТОВ № 2 и выполните согласно данному плану. В ответе на задание 40 числительные пишите цифрами.

- 40.1** Imagine that you are doing a project on **what book genres are popular among teenagers in Zetland**. You have found some data on the subject – the results of the opinion polls (see the table below). **Comment on the data in the table and give your opinion on the subject of the project.**

Book genre	Number of readers (%)
Adventure	55.4
Detective/war/spy stories	55.3
Sports stories	49.2
Animal stories	27.2
Romance	17.6

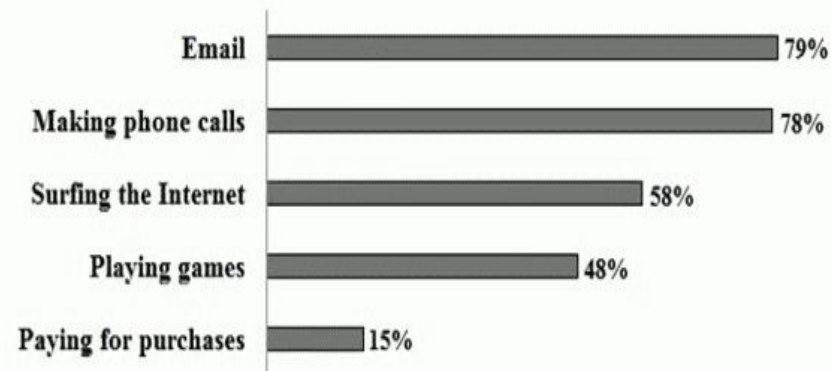
Write 200–250 words.

Use the following plan:

- make an opening statement on the subject of the project;
- select and report 2–3 facts;
- make 1–2 comparisons where relevant;
- outline a problem that can arise with reading and suggest a way of solving it;
- conclude by giving your opinion on the importance of reading for teenagers.

- 40.2** Imagine that you are doing a project on **what people use their smartphones for in Zetland**. You have found some data on the subject – the results of the opinion polls (see the diagram below). **Comment on the data in the diagram and give your opinion on the subject of the project.**

What people use their smartphones for



Write 200–250 words.

Use the following plan:

- make an opening statement on the subject of the project;
- select and report 2–3 facts;
- make 1–2 comparisons where relevant;
- outline a problem that can arise with using smartphones and suggest a way of solving it;
- conclude by giving your opinion on the role of smartphones in our life.



**Be industrious and remember: it takes
time to grow trees.**

Thank you for your time!