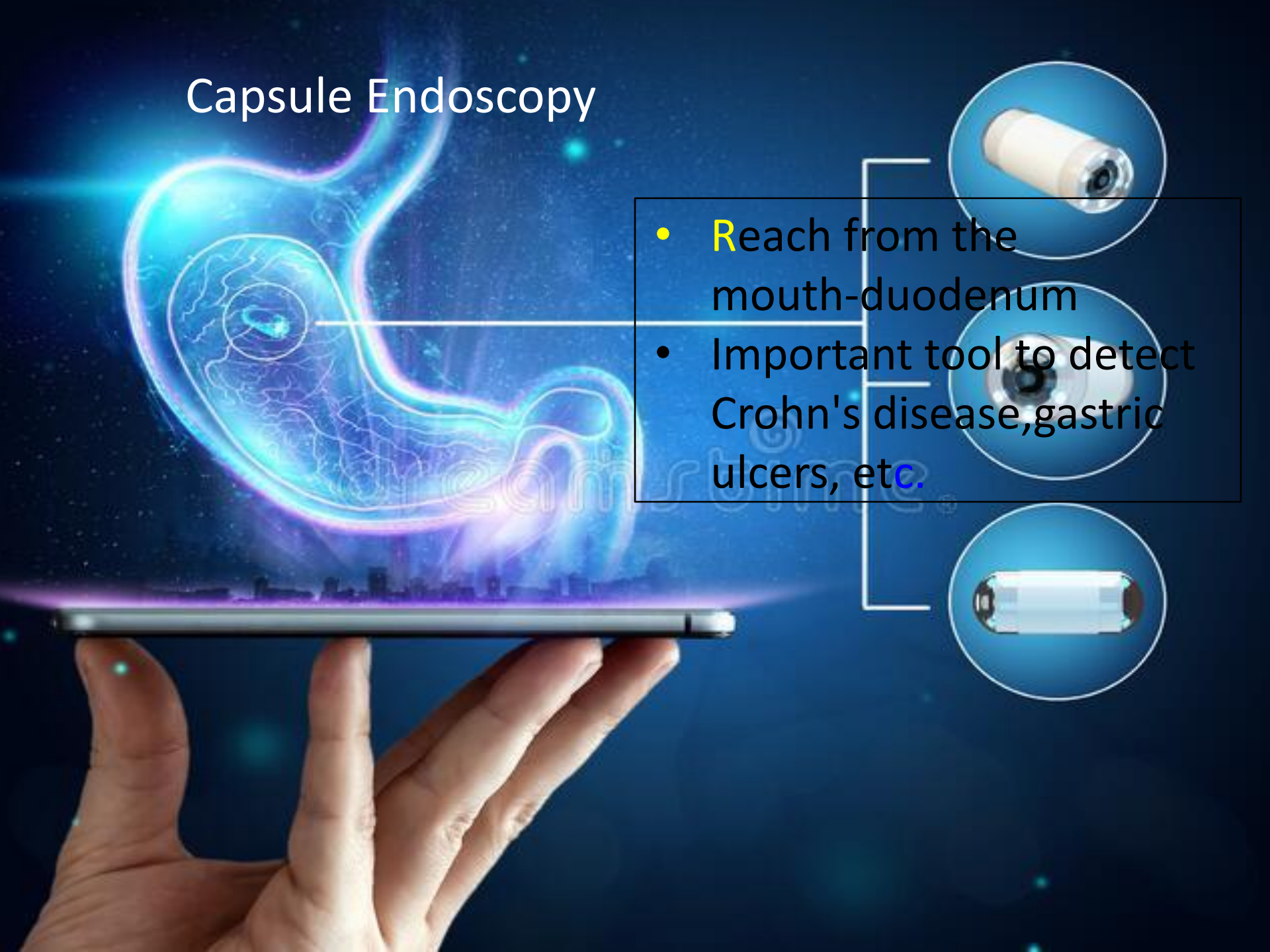


A medical-themed background featuring a blue document with the text 'CAPSULE ENDOSCOPY' in white. A stethoscope is draped over the top right, and a tablet displaying a heart rate monitor and a human silhouette is in the bottom right. The document also has a faint ECG line at the bottom.

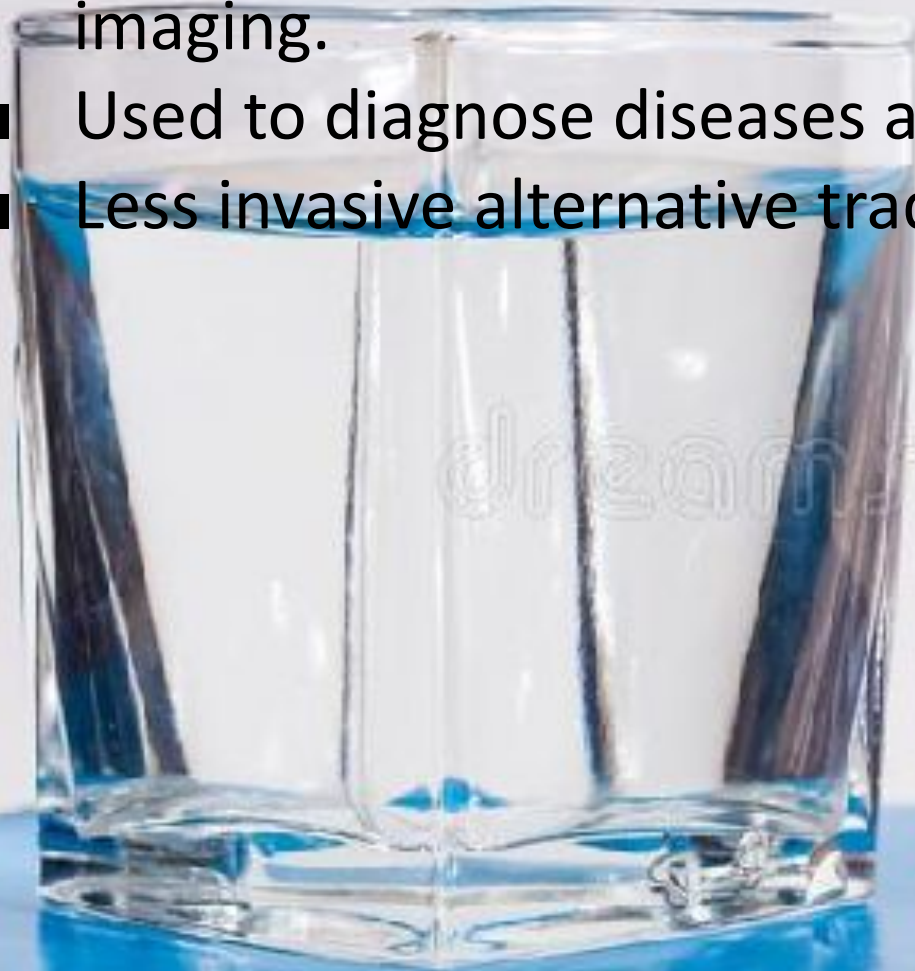
CAPSULE ENDOSCOPY

Capsule Endoscopy

- Reach from the mouth-duodenum
- Important tool to detect Crohn's disease, gastric ulcers, etc.

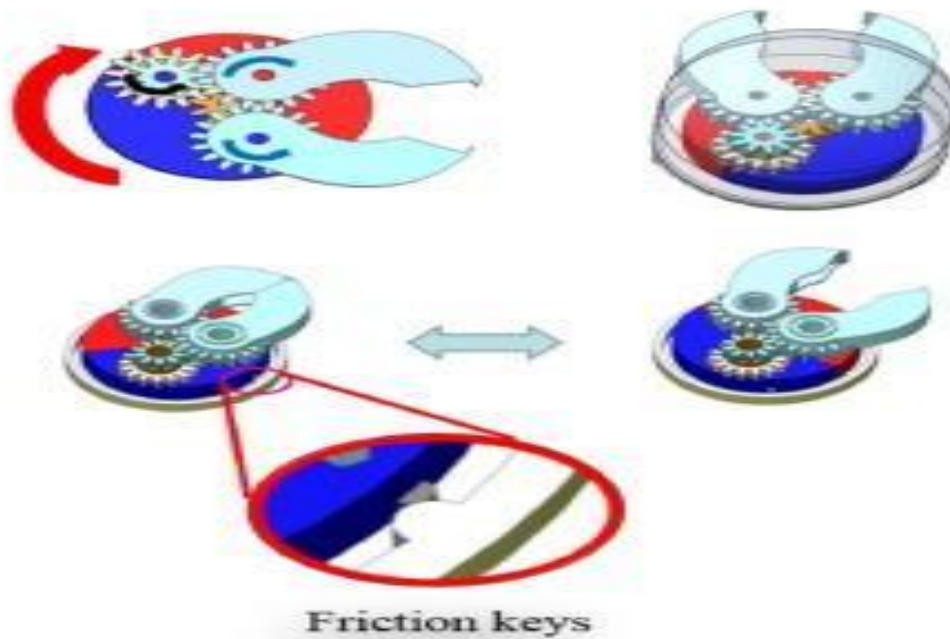


- "pill sized" camera that is swallow and transmits imaging.
- Used to diagnose diseases and disorders of GIT.
- Less invasive alternative traditional endoscopy

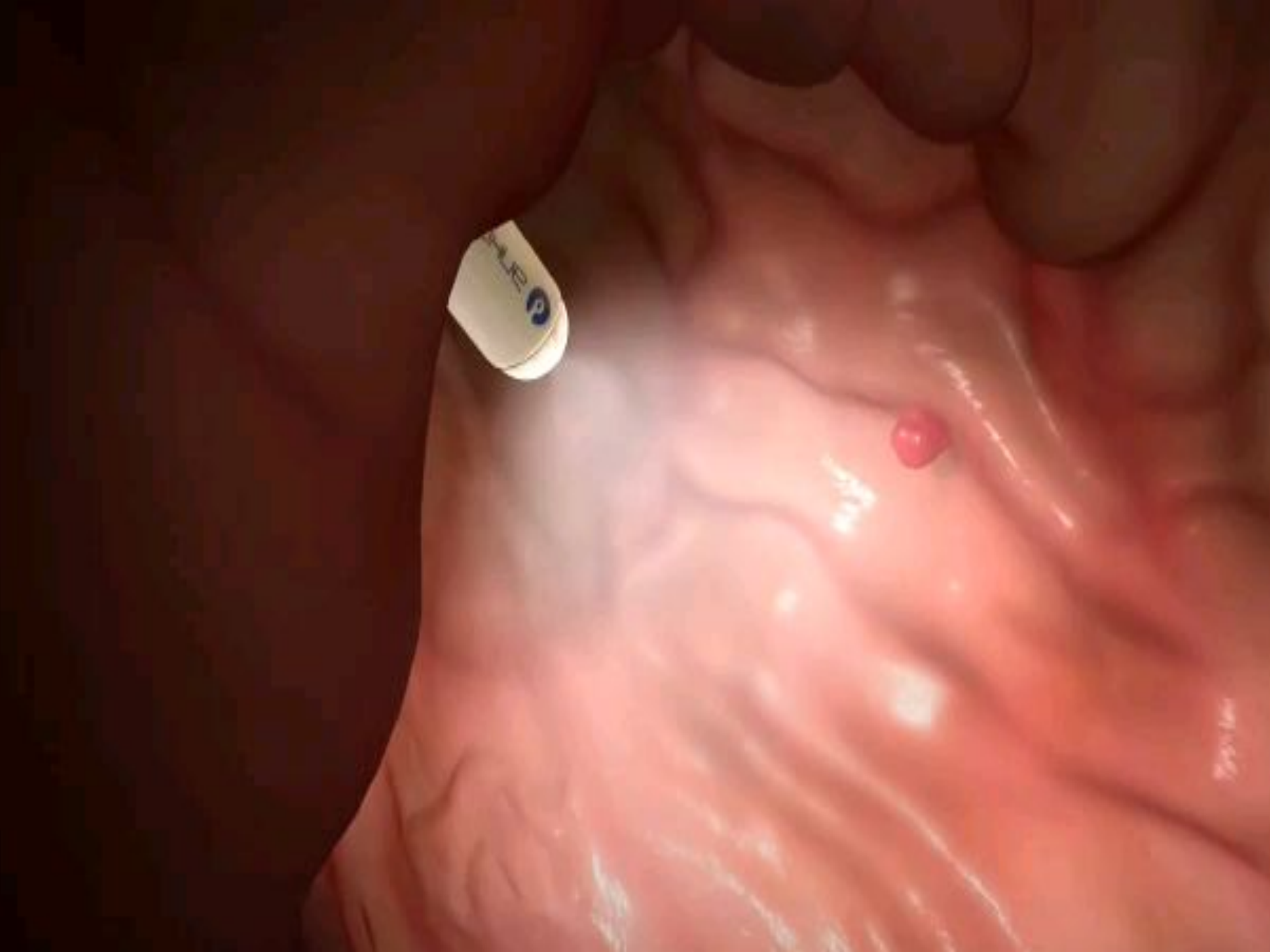




(a)



(b)



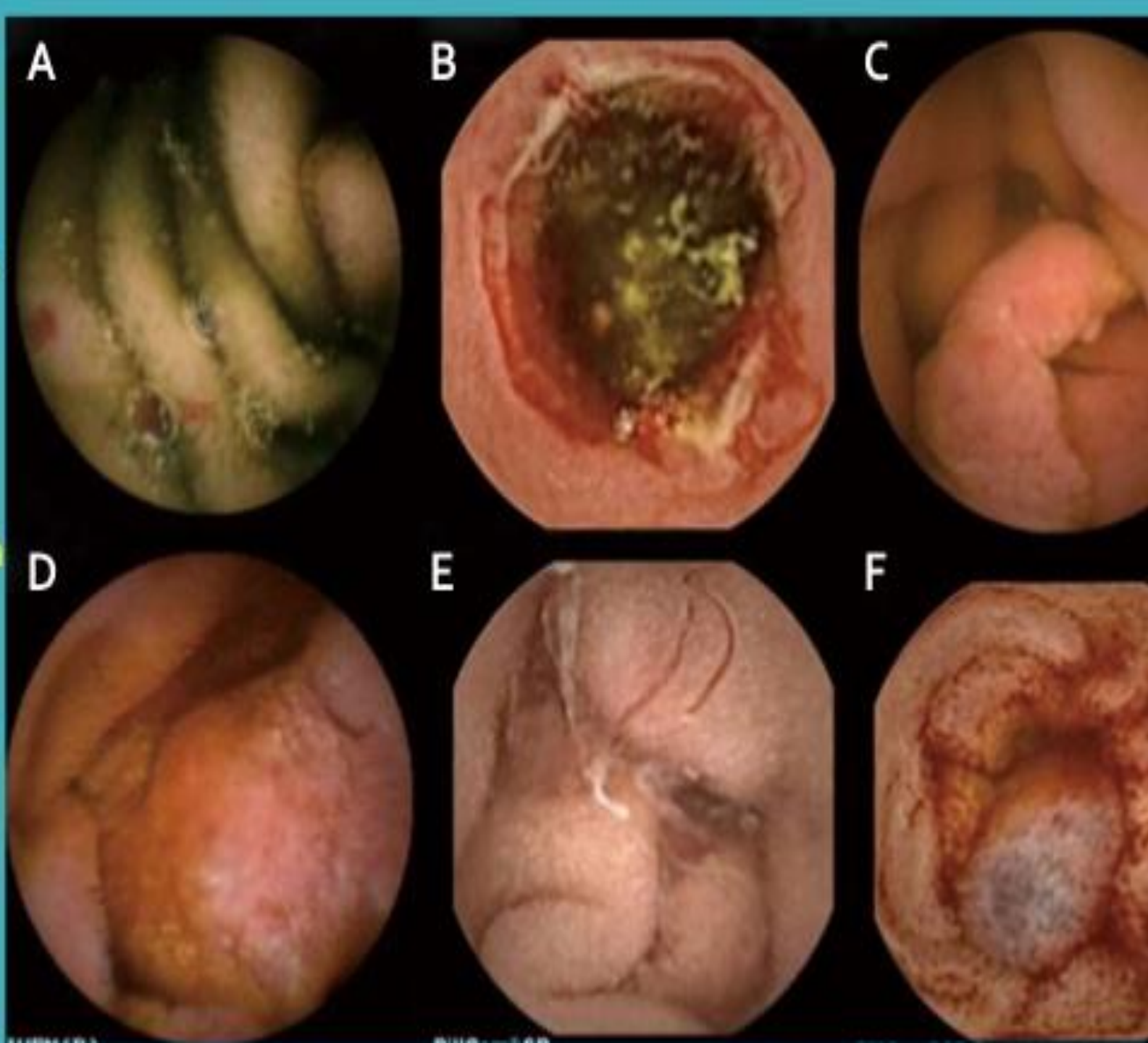
Indications:

- Find the cause of gastrointestinal bleeding. ...
- Diagnose inflammatory bowel diseases, such as Crohn's disease. ...
- Diagnose cancer. ...
- Diagnose celiac disease. ...
- Examine your esophagus. ...
- Screen for polyps. ...
- Do follow-up testing after X-rays or other imaging tests.



Lesions at CE
seen in patients
with obscure
GIT bleed

- : Arteriovenous malformation
- : NSAID ulcer
- : Polyp
- : Adenocarcinoma
- : Hook worm
- : Small intestinal varix



Fissuring



Multiple aphthous ulcers



Serpiginous ulcer



Cobble stoning



Stricture

**Crohn's disease
by capsule
endoscopy**

Endoscopy images.

A: Multiple angioectasia.

B: Metastatic malignant melanoma of the small bowel.

C: Ulceration due to Crohn's disease-deep ulcer indicated by arrow.

D: Circumferential ulceration and stenosis due to NSAID use.

E: Typical mucosal changes associated with coeliac disease.

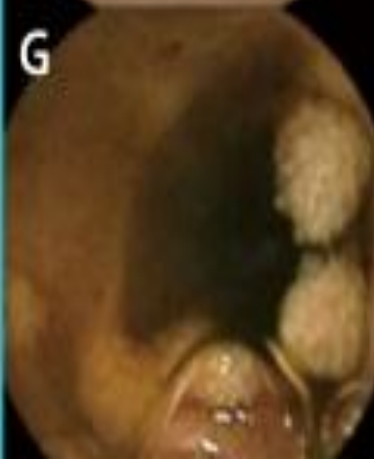
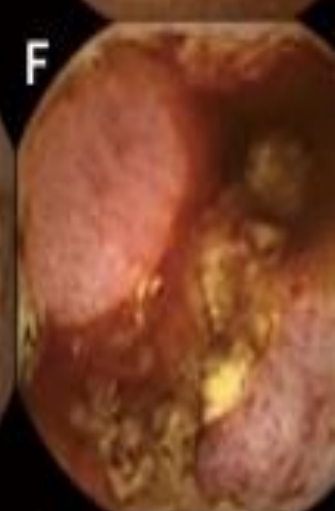
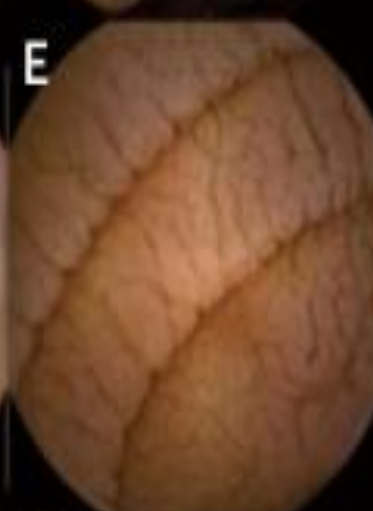
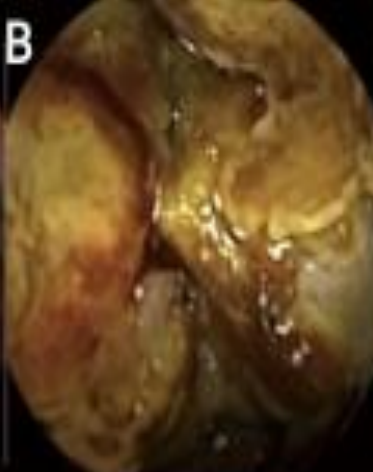
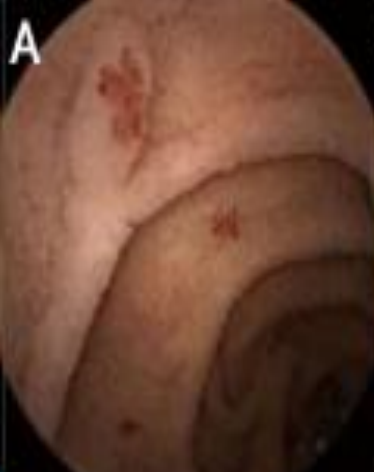
F: Enteropathy associated T-cell lymphoma.

G: Peutz Jeghers syndrome.

H: Oesophageal varix with associated regenerative nodule.

I: Colonic polyp.

J: Colorectal adenocarcinoma.



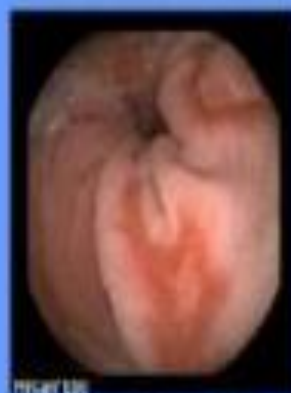
Esophageal Disease



Normal Z-line



Suspected
Barrett's



Esophagitis



Varices



Varices



Suspected
Barrett's



Thank you..!

Done by;
Somashekar Tejaswini
From group 183(1)-La-1