

Module 6b
Listening & Speaking

Map Symbols & Road Features



Objectives:

- to practise asking and giving directions
- to develop our listening skills

Contents:

prepositions of place, places, verbs and expressions related to the topic



Module 6b

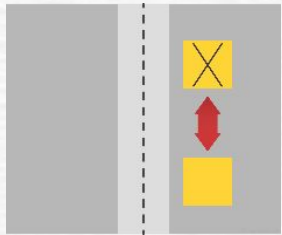
1 Match the labels on the diagram (1-8) with the words (A-H) below. Then use the words A-H to complete the sentences 1-8.

- A traffic lights
- B zebra crossing
- C roundabout
- D pavement
- E car park
- F bus lane
- G hospital
- H junction

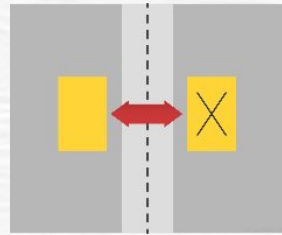


- 1 Go round the **roundabout** and take the third exit.
- 2 Walk on the **pavement**, not on the road.
- 3 Stop! The **traffic lights** are red.
- 4 Let's cross the road at the **zebra crossing** it's safer.
- 5 Is there any room in the **parking**?
- 6 Two roads meet at a **junction**.
- 7 You mustn't drive in the **bus lane**; it is for buses only.
- 8 He must go to **hospital** to have an operation.

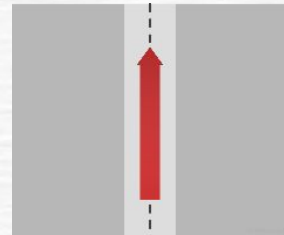
Prepositions of place and movement



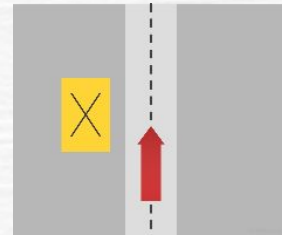
It's next to



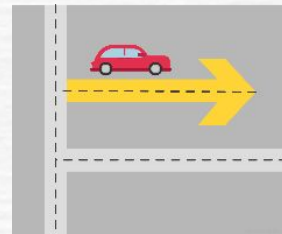
It's opposite



Go along the street



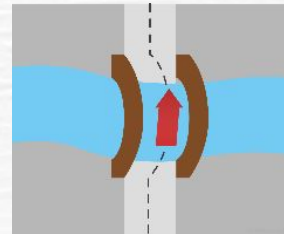
It's on the left



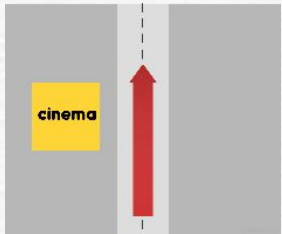
Take the second right



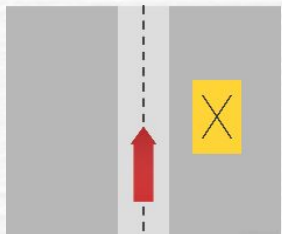
Go down West Street until the end



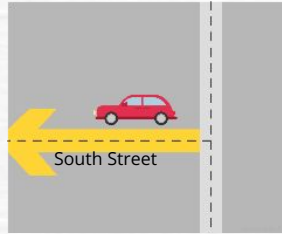
Go over the bridge



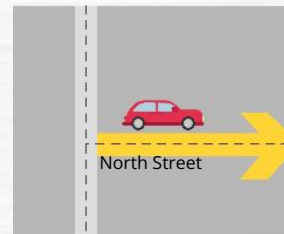
Go past the cinema



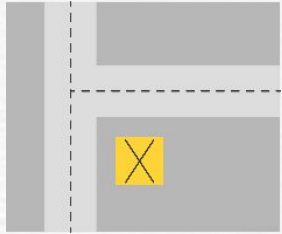
It's on the right



Turn left into South Street



Turn right into North Street



It's on the corner

Match the phrases to the pictures.

- 1) Turn right into North Street
- 2) Turn left into South Street
- 3) Go down West Street until the end
- 4) Go over the bridge
- 5) Go past the cinema
- 6) Go along the street
- 7) Take the second right
- 8) It's on the left
- 9) It's on the right
- 10) It's opposite
- 11) It's next to
- 12) It's on the corner



Dear Mister Smith

Thank you for booking one of our holiday homes.

Here are your directions.

When you come into the town you're on Abbot Street. Go along this street, past the bus station

on the right, then go over the bridge and turn right. This is East Street. Go along East Street (the

river is on your right now) and turn left at the end of the street.

Then go along South Road for about 100 metres and turn right. Hill Top House is the first house on

the left, next to a small car park.

I hope you and your family have a wonderful holiday.

Best wishes

Let's read it, look at the map and draw the route from **YOU ARE HERE** to our holiday home.

Which number is the holiday home on the map?



Asking for directions:

- Excuse me. Is there an Internet café near here?
- How can I get there?
- Could you tell me the way to the Internet café?
- Where is this Internet café?


Giving directions:

- Go along King Road.
- Go past the Fishing Museum.
- Turn left/right to Duke Street.
- Take the first/second on the left/right.
- The café is on the left/right.
- It's opposite the chemist's.
- It's next to the bookshop.

You can't give directions:

- Sorry, I don't know.
- Sorry, I don't live around here.



4 Read the dialogue and complete gaps 1-5 with the questions. There are two questions that you do not need to use.  Listen and check.

A: Excuse me, 1) **E**

B: Erm... perhaps from the bus station, but I'm not sure. You could ask at the tourist information office.

A: 2) **B**

B: Yes, just go to the end of the street and turn right at the traffic lights. It's just two streets down on the corner.

A: Oh, thanks a lot. 3) **A**

B: Sure, go ahead.

A: 4) **F**

B: Yes, I've heard the Sea View Hotel is very nice.

A: 5) **D**

B: I think you can book that at the tourist information office, too.

A: Oh, that would be great. Thanks.

B: You're welcome and enjoy your stay in Blackpool.

A Do you mind if I ask something else?

B Is it nearby?

C Sorry, could you repeat that, please?

D How can I book a room?

E Do you know where I can get a bus to Blackpool Tower?

F Can you recommend a good hotel?

G Is it a long way from here?



Listening

6



Read statements 1-7. Listen and say whether the statements are *True*, *False* or *Not stated*. Listen again and check.

1 Sam and George have enjoyed their holiday.

True B False C Not stated

2 The weather hasn't been very good that week.

True B False C Not stated

3 Sam enjoyed her donkey ride.

A True False C Not stated

4 George still has to buy some gifts.

A True False C Not stated

5 The entrance fee to the Sea Life Centre is expensive.

A True B False Not stated

6 The Sea Life Centre is too far to walk to.

A True False C Not stated

7 Fish and chips are Sam's favourite food.

A True B False Not stated



Module 6b

Choose the places from the box.

Write directions to them from **YOU ARE HERE**:

- **Tesco's supermarket**
- **Chemist's**
- **The Seaton Jurassic visitor Centre**

