

Technical writing



Line Graph

*The **graph** below shows the number of books read by men and women at Burnaby Public Library from 2011 to 2014.*

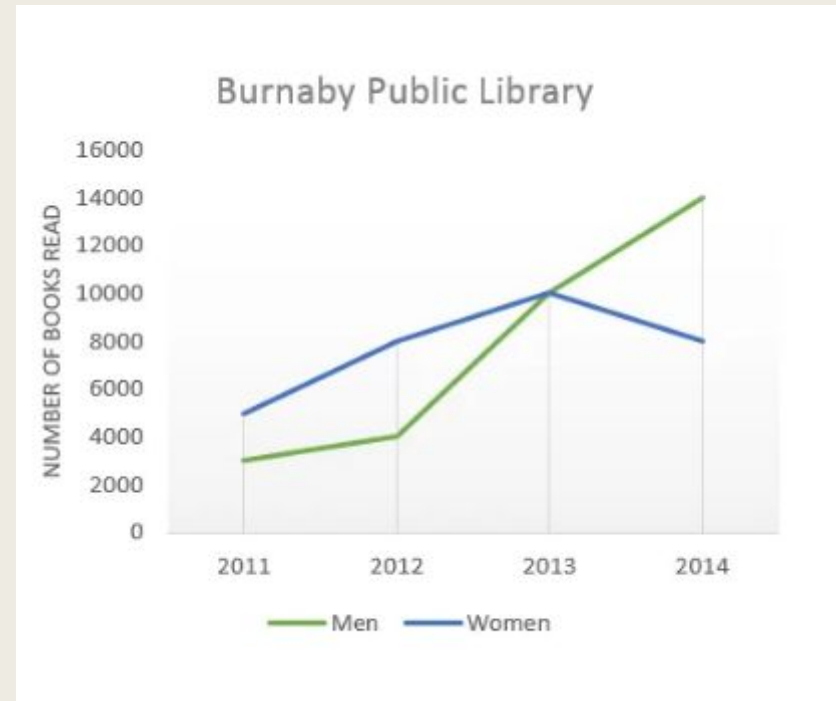


Table chart

The **table** shows data about underground railway systems in six major cities with date opened, kilometres of route and passenger numbers per year in millions.

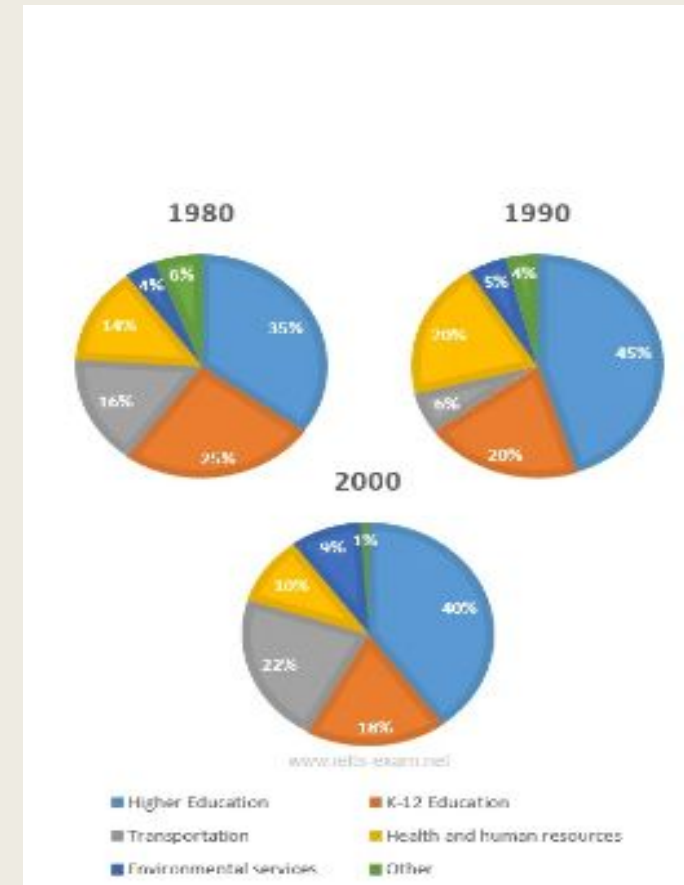
The table shows data about underground railway systems in six major cities with date opened, kilometres of route and passenger numbers per year in millions.

Summarise the information by selecting and reporting the main features, making comparisons where relevant

| City | Date opened | Kilometres of route | Passengers per year (in millions) |
|---------------|-------------|---------------------|--------------------------------------|
| London | 1863 | 394 | 775 |
| Paris | 1900 | 199 | 1191 |
| Tokyo | 1927 | 155 | 1928 |
| Washington DC | 1976 | 126 | 144 |
| Kyoto | 1981 | 11 | 45 |
| Los Angeles | 2001 | 28 | 50 |

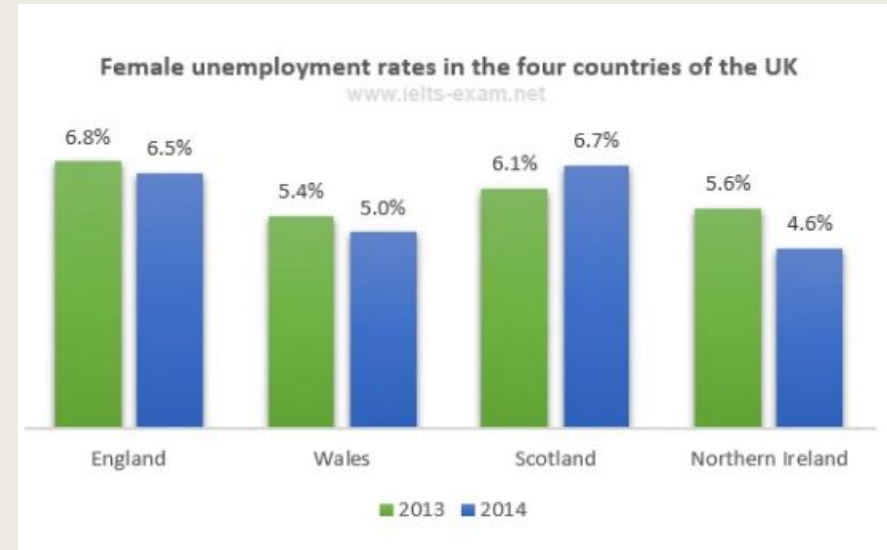
Pie Chart

*The three **pie charts** below show the changes in annual spending by local authorities in Someland in 1980, 1990 and 2000.*



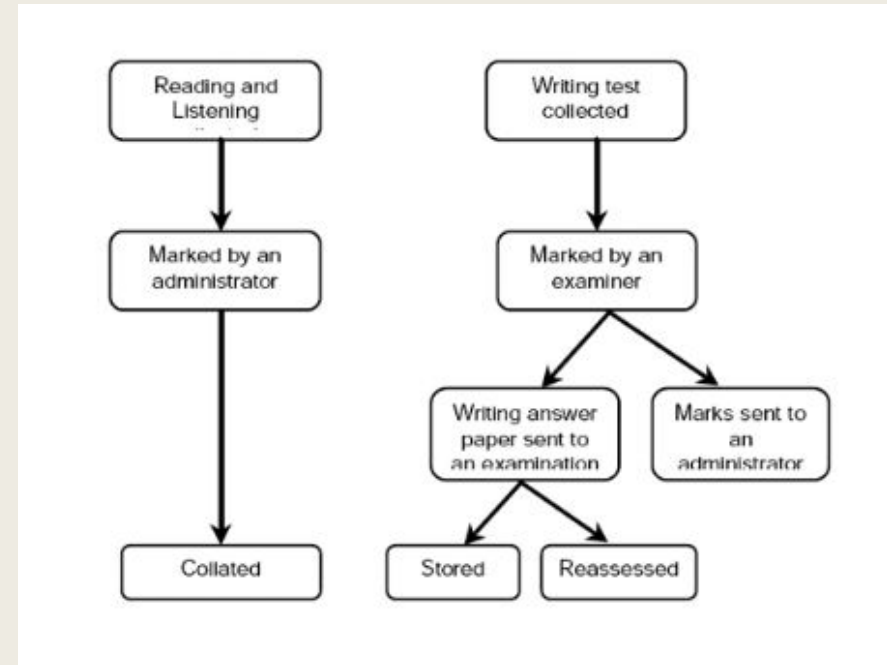
Bar Chart

The **bar chart** below shows female unemployment rates in each country of the United Kingdom in 2013 and 2014.



Process Diagram (A Flow Chart)

The **diagrams** show/ the **flow chart** shows a structure that is used to generate electricity from wave power.



Map

The **map** below is of the town of Canterbury. A new school (S) is planned for the area. The map shows two possible sites for the school.

