

The largest deep-ocean silicic volcanic eruption of the past century

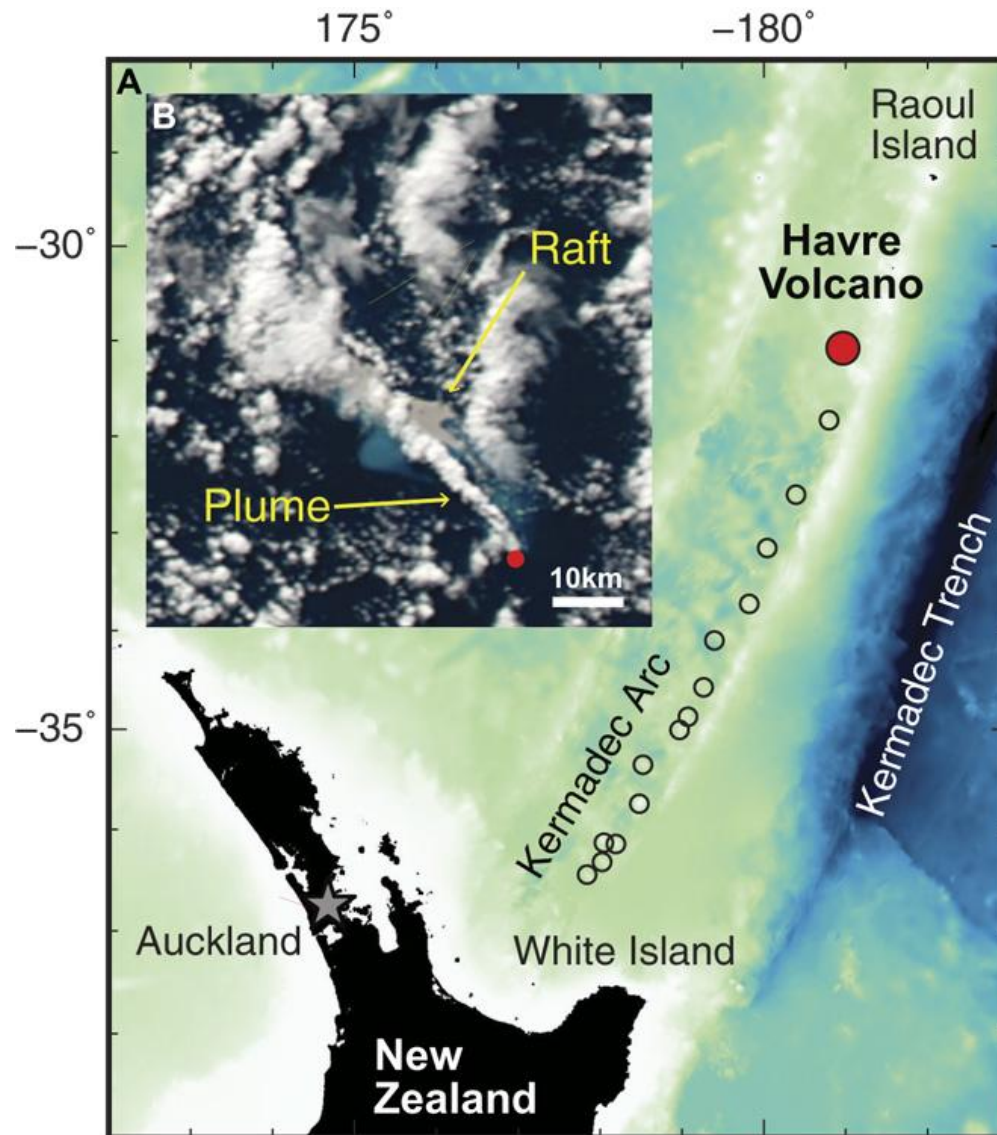
by Rebecca Carey, S. Adam Soule, Michael Manga, James D. L. White, Jocelyn McPhie, Richard Wysoczanski, Martin Jutzeler, Kenichiro Tani, Dana Yoerger, Daniel Fornari, Fabio Caratori-Tontini, Bruce Houghton, Samuel Mitchell, Fumihiko Ikegami, Chris Conway, Arran Murch, Kristen Fauria, Meghan Jones, Ryan Cahalan, and Warren McKenzie

Science
Volume 4(1):e1701121
January 10, 2018

ScienceAdvances

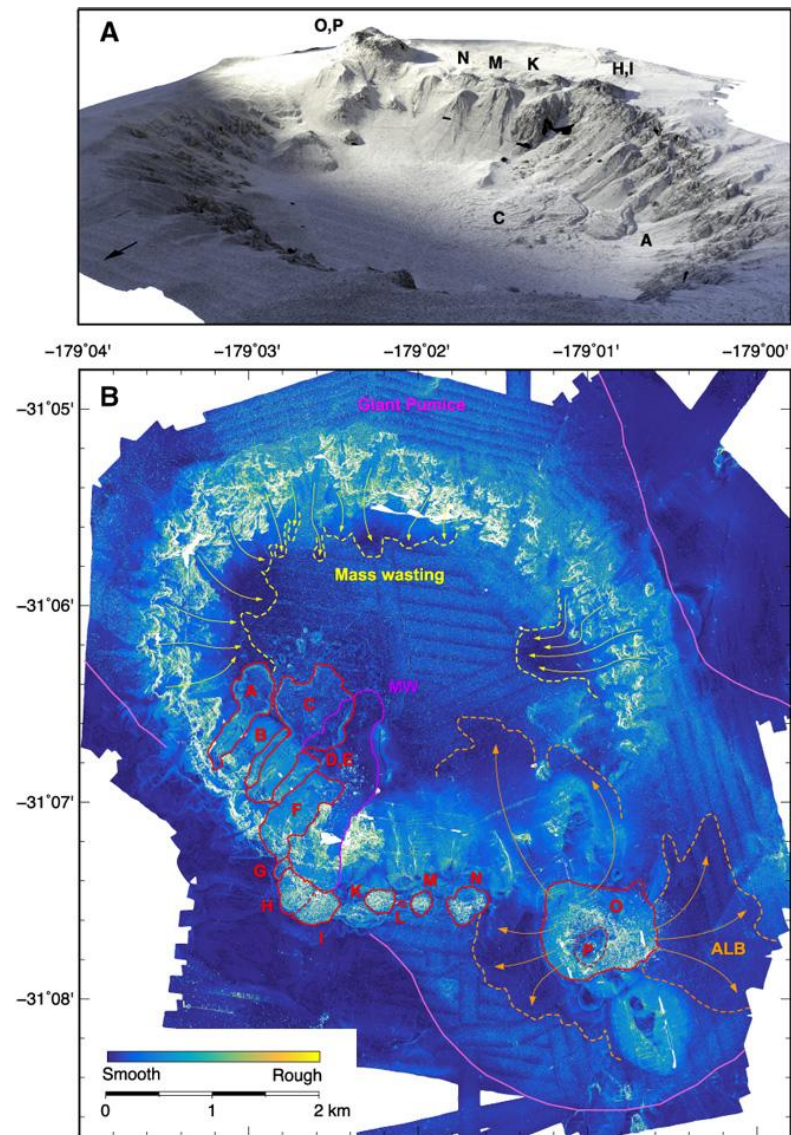
AAAS

Fig. 1 Location map of Havre volcano and NASA MODIS satellite imagery.



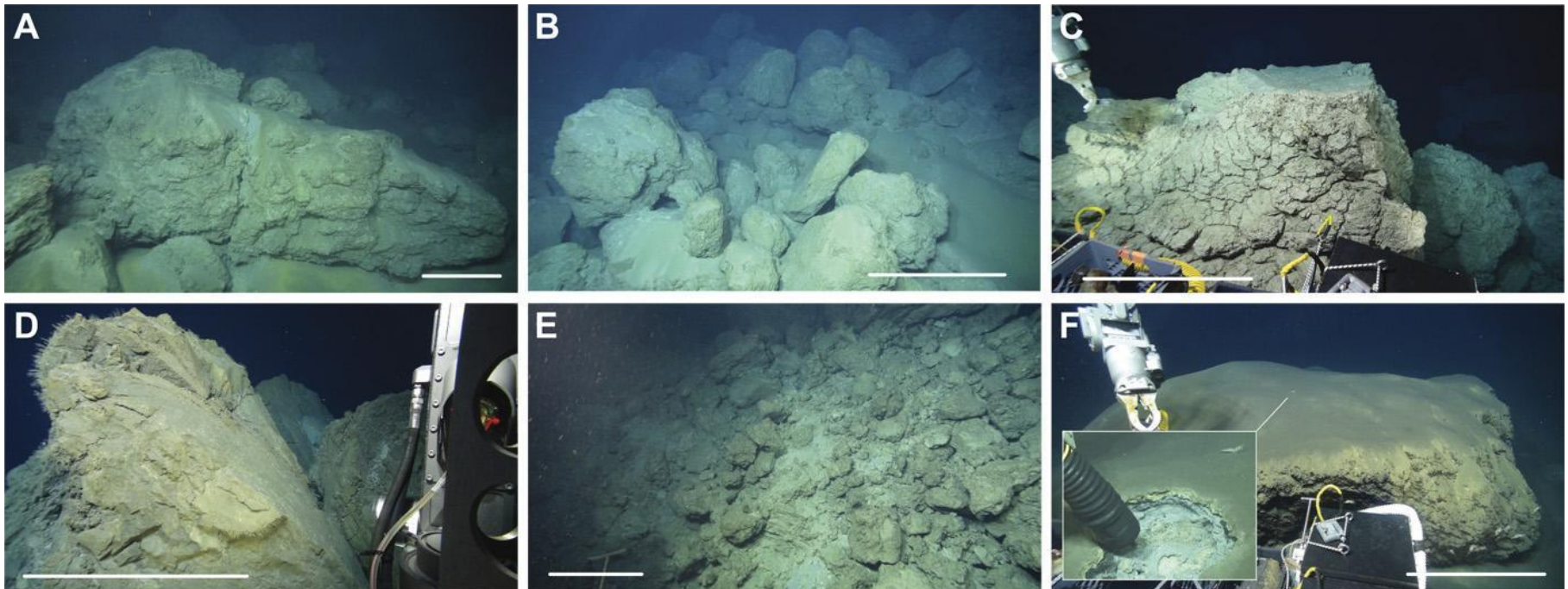
Rebecca Carey et al. *Sci Adv* 2018;4:e1701121

Fig. 2 Two-dimensional surface roughness map and three-dimensional rendering of Havre submarine volcano.



Rebecca Carey et al. *Sci Adv* 2018;4:e1701121

Fig. 3 Seafloor products of the 2012 Havre eruption.



Rebecca Carey et al. *Sci Adv* 2018;4:e1701121