

A decorative frame consisting of thick black lines forming an L-shape. One vertical line is on the left side, and one horizontal line is at the top, meeting at the top-left corner. Another vertical line is on the right side, and another horizontal line is at the bottom, meeting at the bottom-right corner.

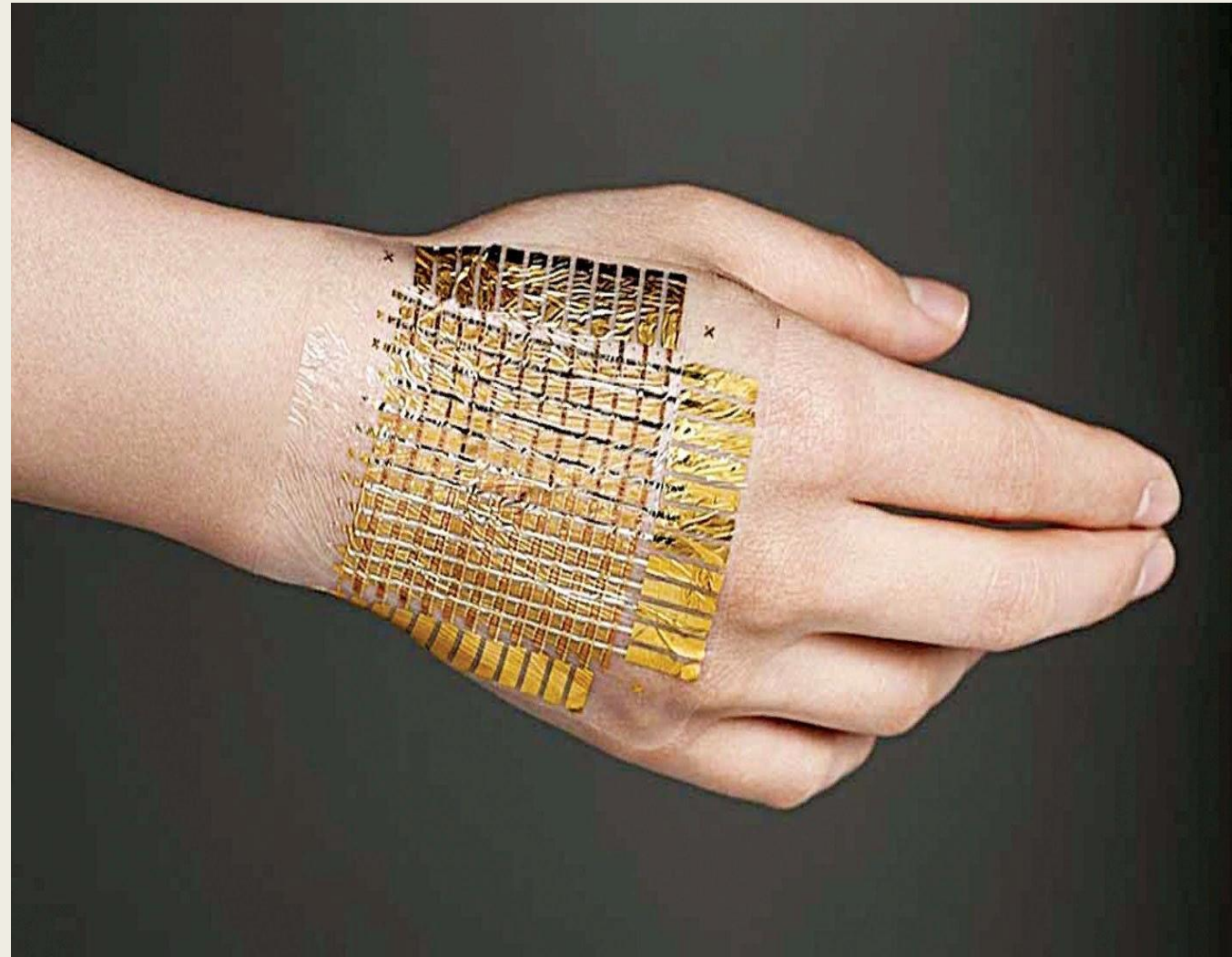
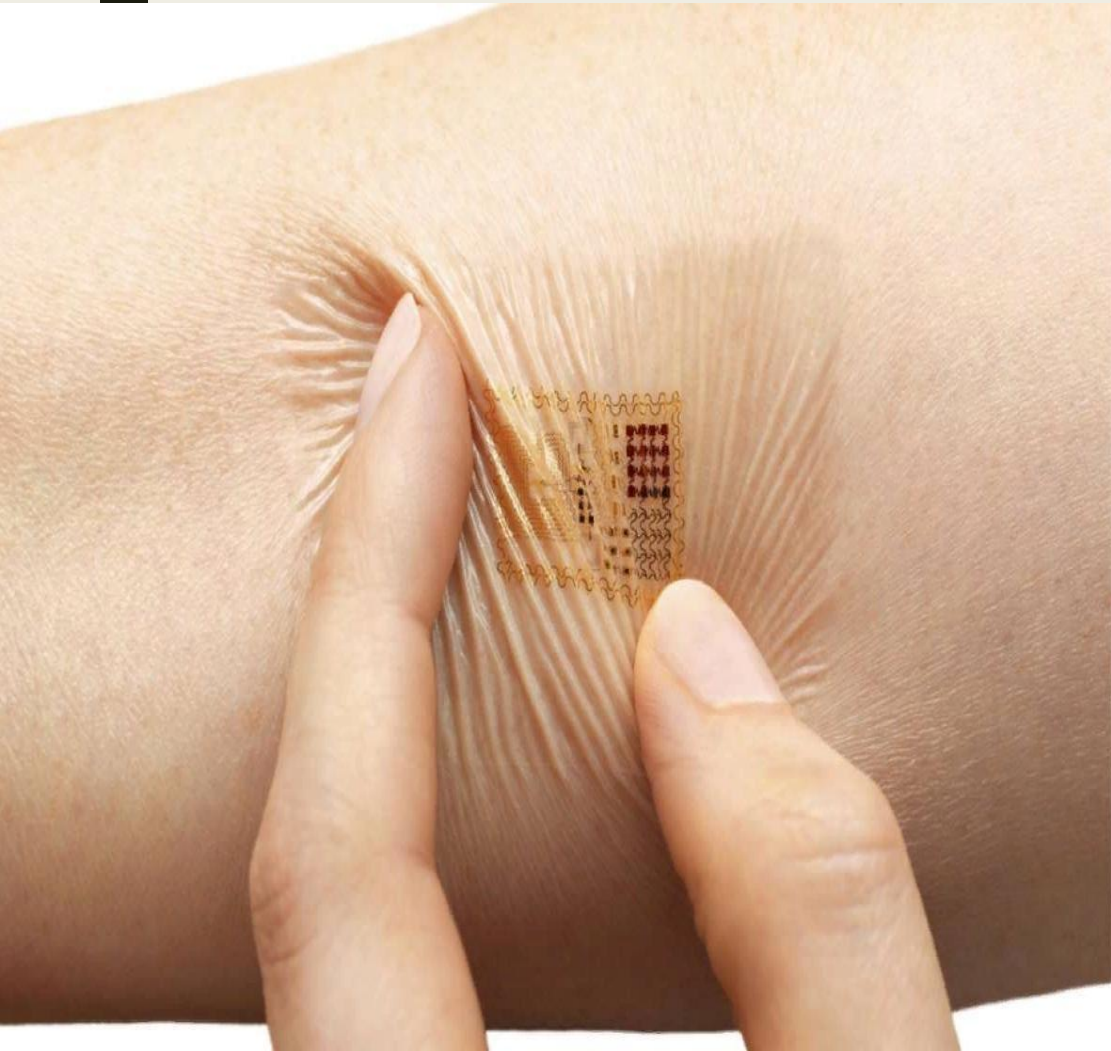
НАНОТЕХНОЛОГ ИИ

Выполнили: Сорокина А., Шишпор В.





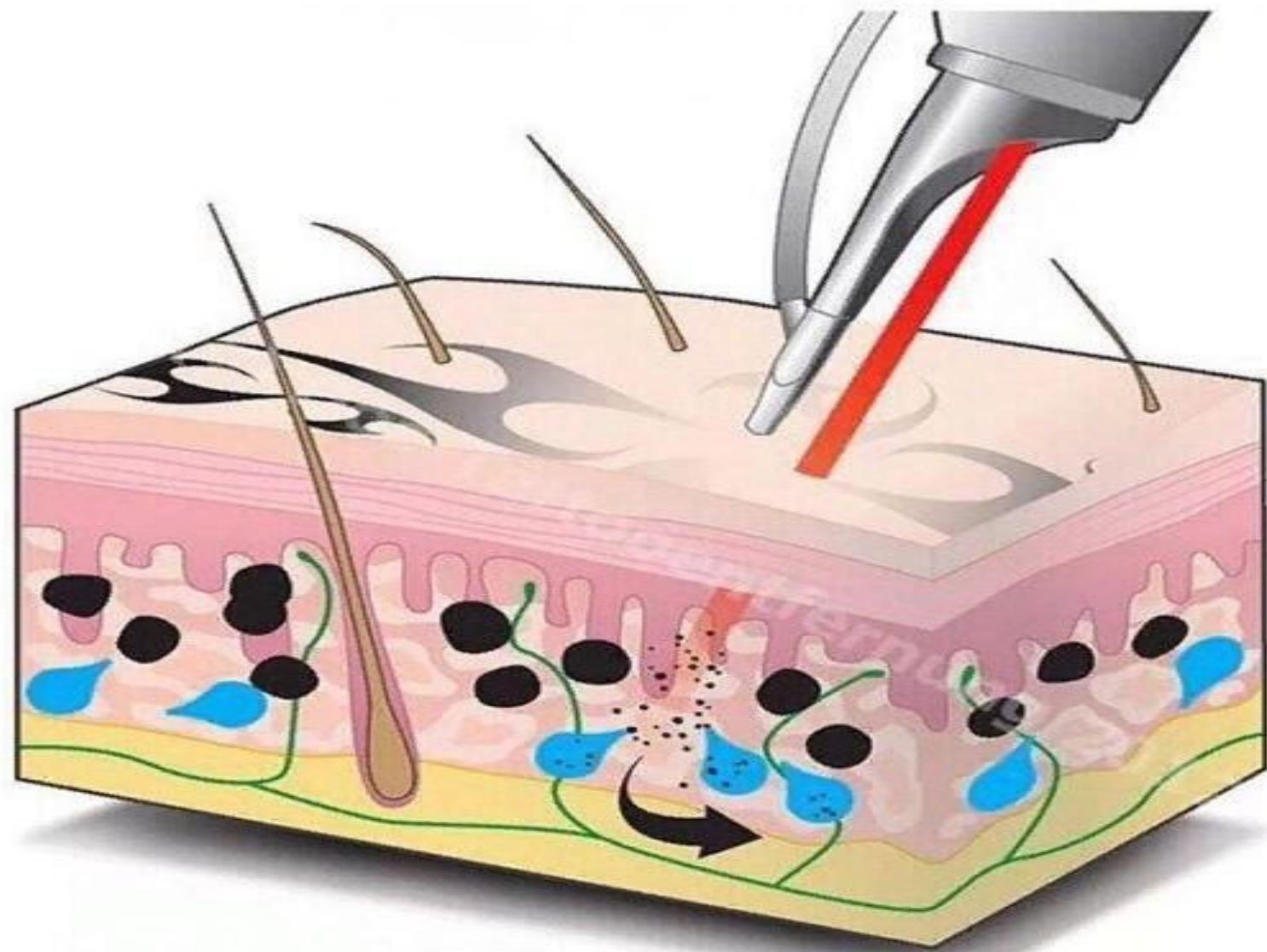




Майнцский университет





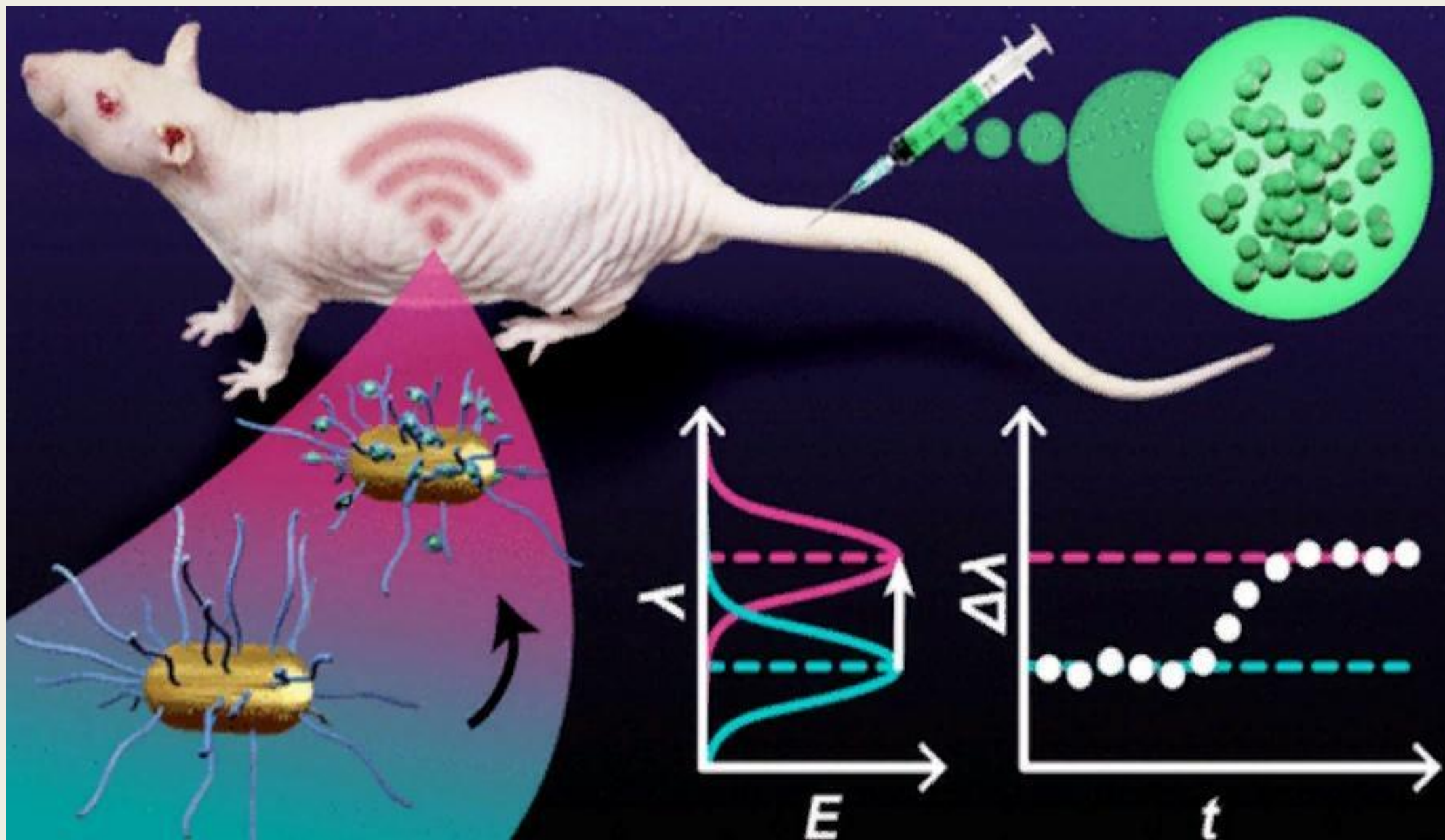


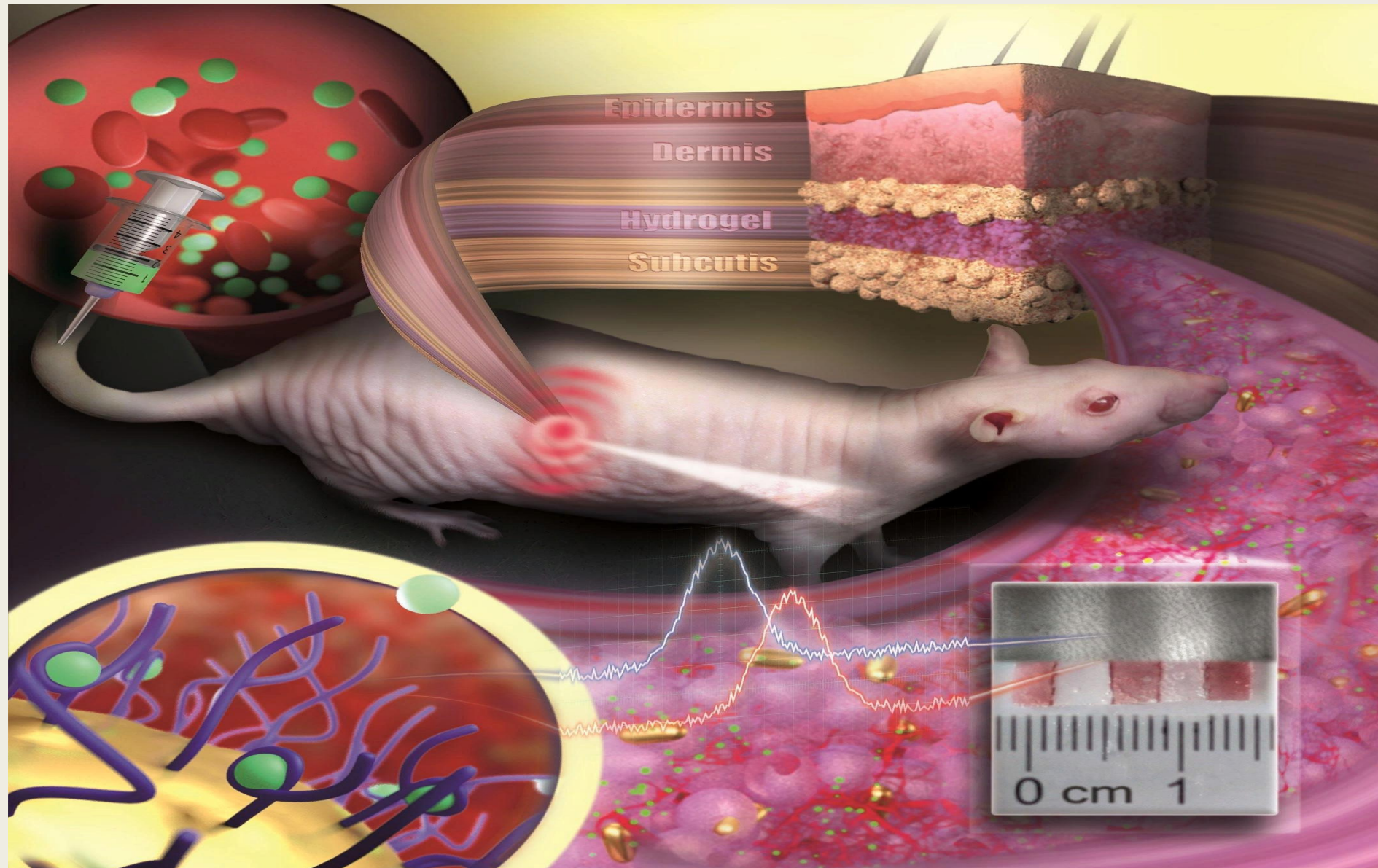
Карстен Зенниксен

Наш сенсор похож на
невидимое тату, он не
больше монеты и тоньше
миллиметра











Спасибо за внимание

