

Локализация поражения нервно-мышечного сегмента.

Основные характеристики М-ответа.

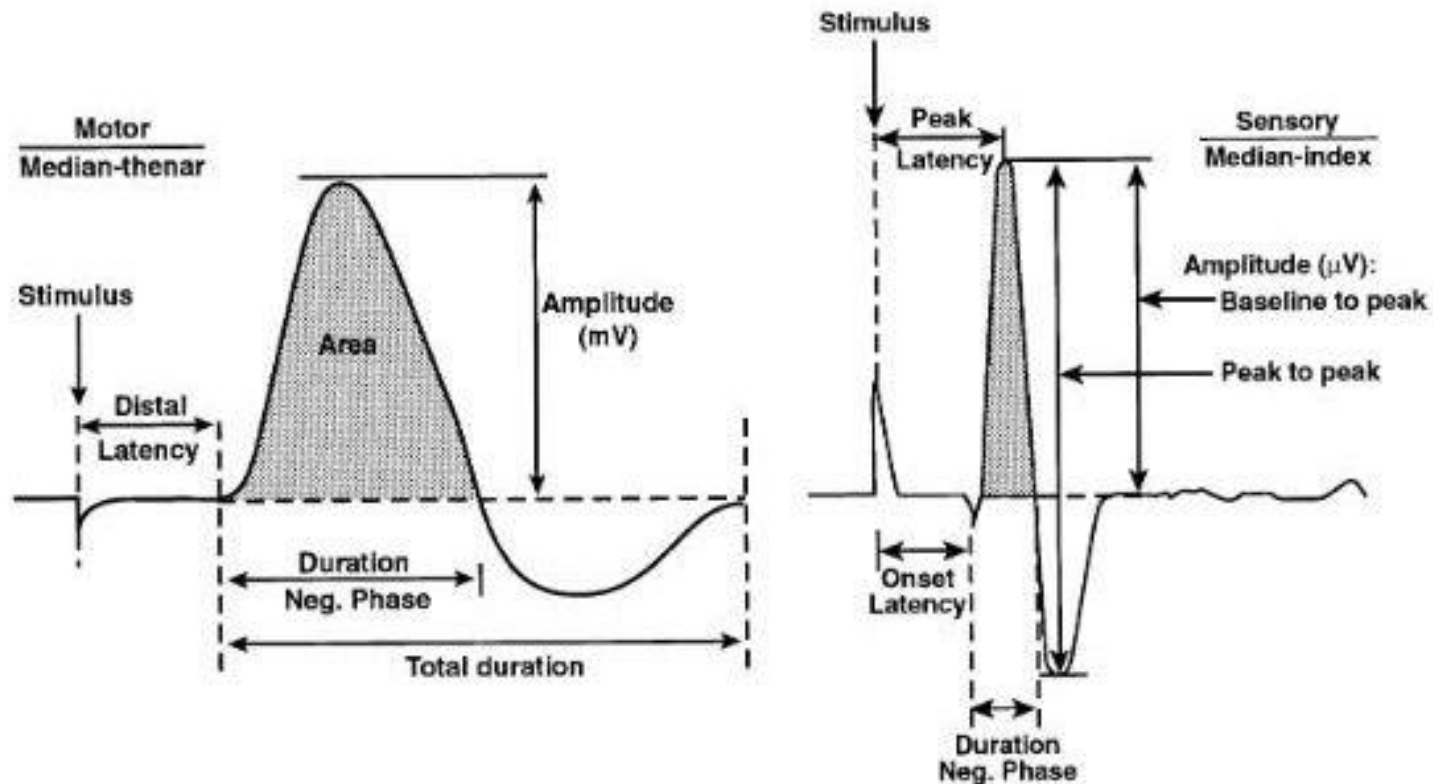


Fig. 2. Median compound muscle action potential and sensory nerve action potential, obtained by stimulating the median nerve at the wrist while recording from the thenar eminence and the second digit, respectively, with surface electrodes. Amplitude, latency, and duration of the responses are illustrated. (Modified from Isley MR, Kranss GL, Levin KH, Litt B, Shields RW, Wilbourn AJ. *Electromyography/Electroencephalography*. Redford, Washington: SpaceLabs Medical; 1993; with permission.)

Виды и локализация поражения.

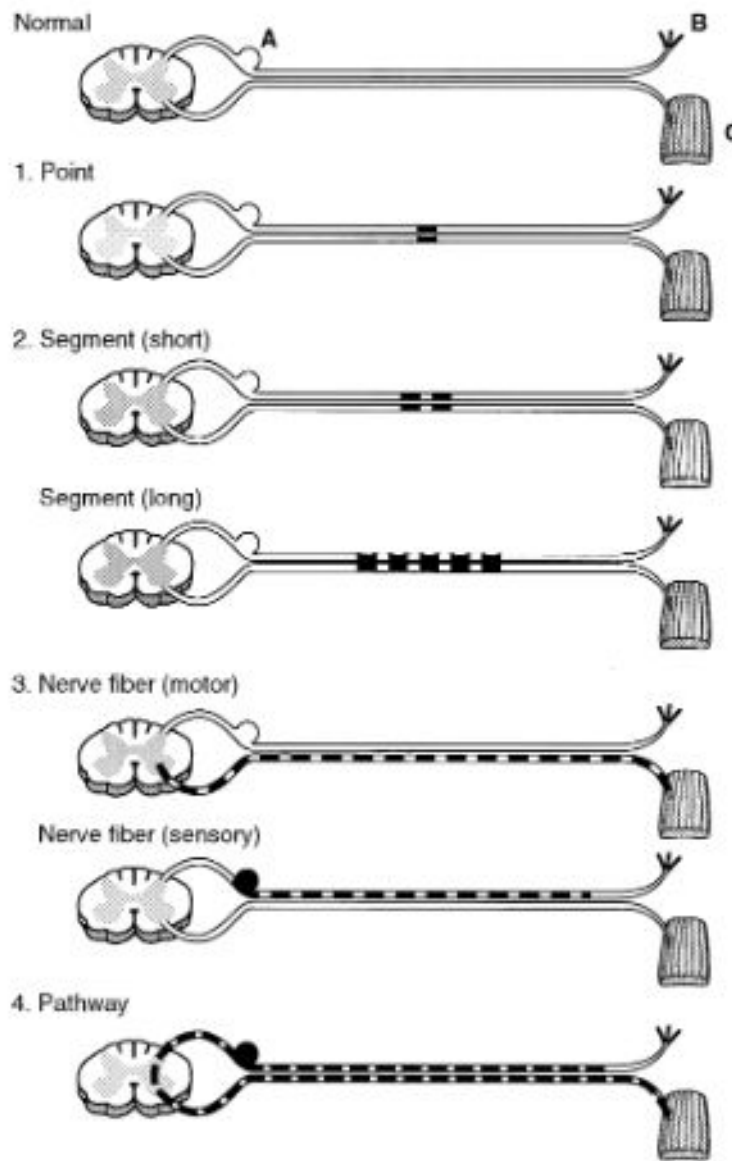


Fig. 10. Four types of localization possible with focal nerve lesions: (1) point, (2) segment, (3) nerve fiber, and (4) pathway. While the entire motor axon is assessed with motor nerve conduction studies and needle electrode examination, the complete sensory axon is not assessed during sensory NCS (Panel 3). Instead, the most peripheral portion is not included in the assessment because the latter ends at the cathode or the active recording electrode, whichever is most distally situated along the nerve.

Уровень поражения.

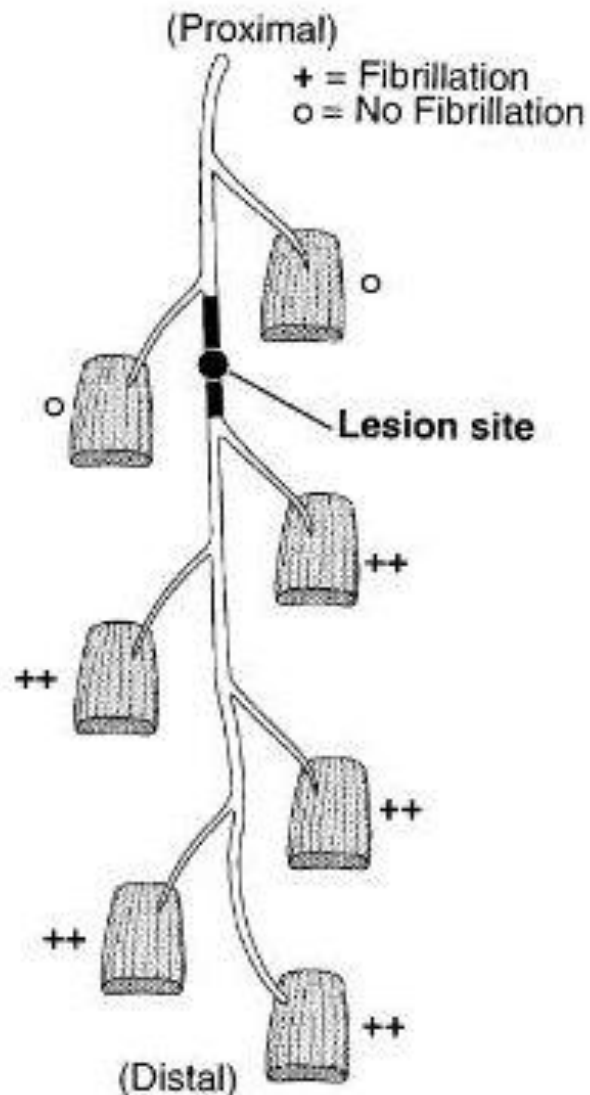


Fig. 11. How axon loss lesions are localized by the needle electrode examination. The lesion is assumed to be situated at some point along the nerve segment between the origin of the motor branches that innervate: the most distal muscle that appears normal, and the most proximal muscle that appears abnormal.

Уровень поражения.

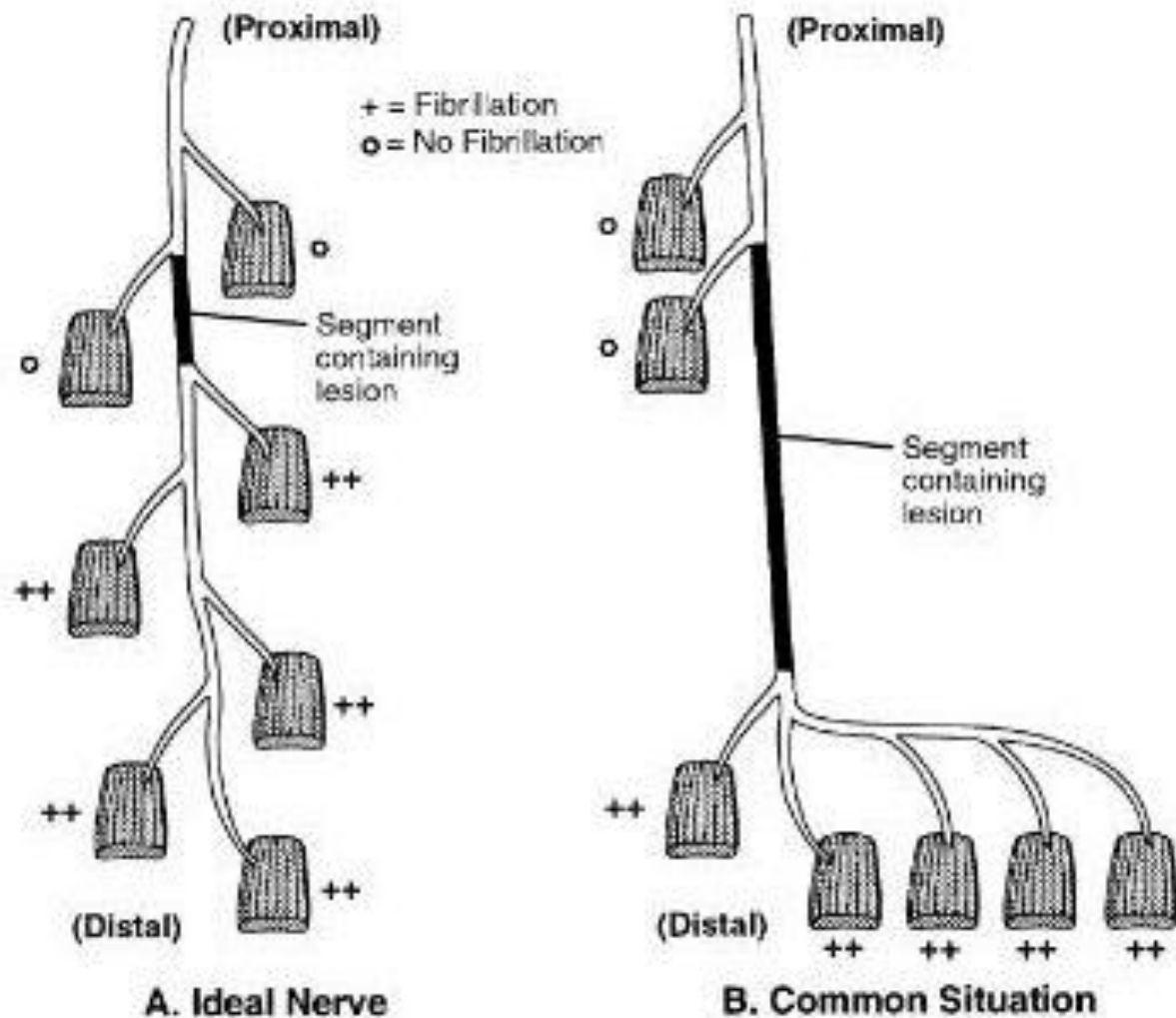


Fig. 12. The anatomy of the injured nerve, specifically, the number of the motor branches that arise from it, in relationship to the lesion site, may have adverse effects on localization by needle electrode examination as shown. Note that the segment of nerve that encompasses the focal nerve lesion can vary substantially (B) from the ideal nerve (A).

Уровень поражения

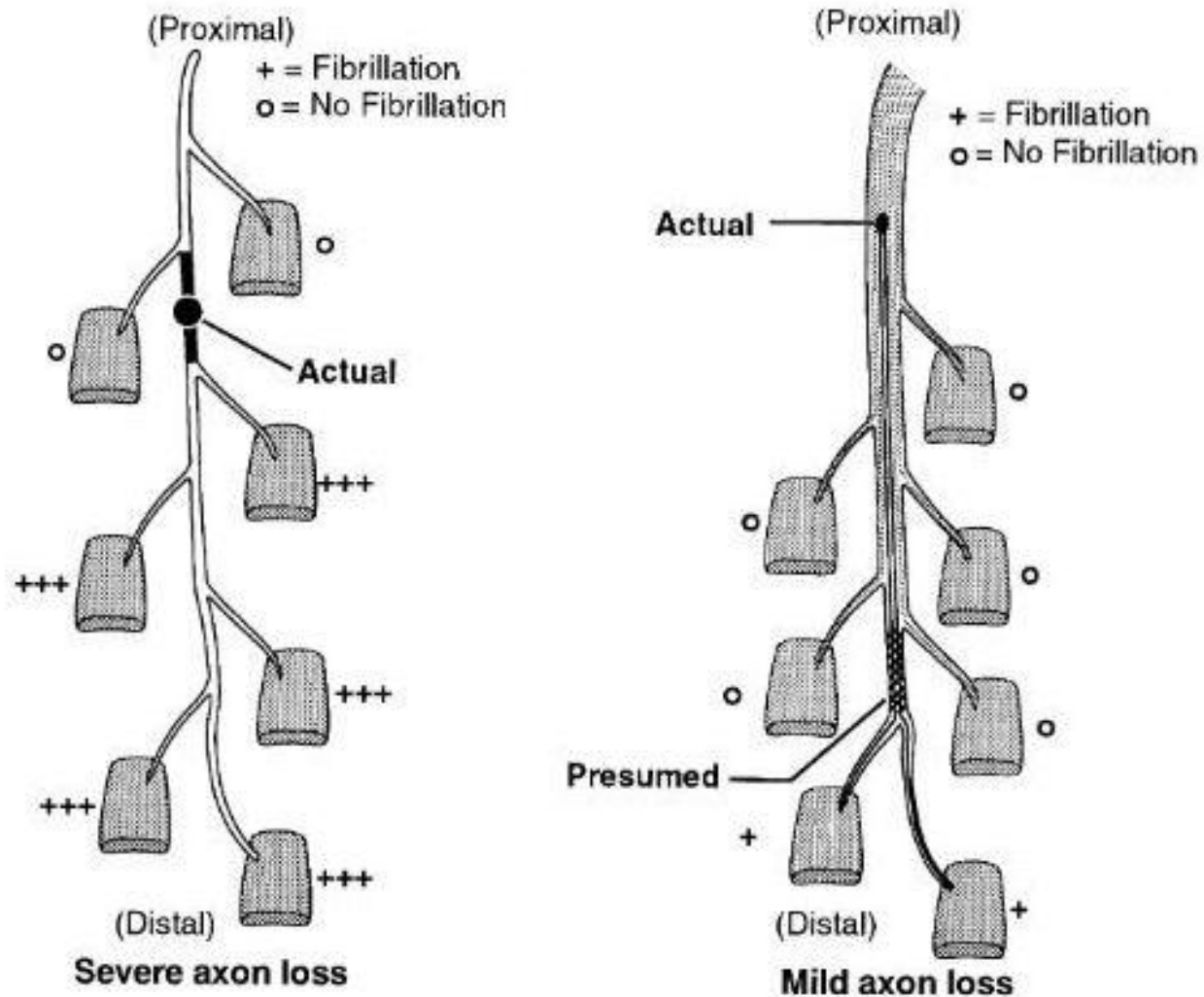


Fig. 13. The effect the severity of a focal axon loss lesion, specifically one killing only a few fascicles, has on localization by needle electrode examination.

Уровень поражения.

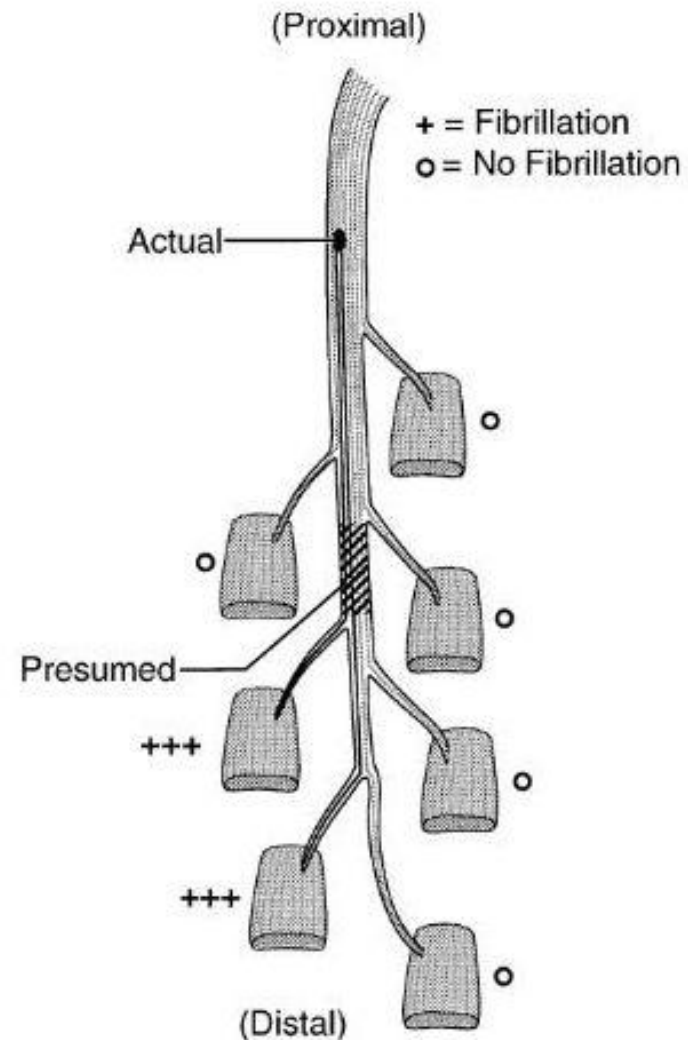


Fig. 14. The effect that involvement of certain nerve fascicles with an incomplete but severe focal axon loss lesion has on localization by needle electrode examination.

Уровень поражения

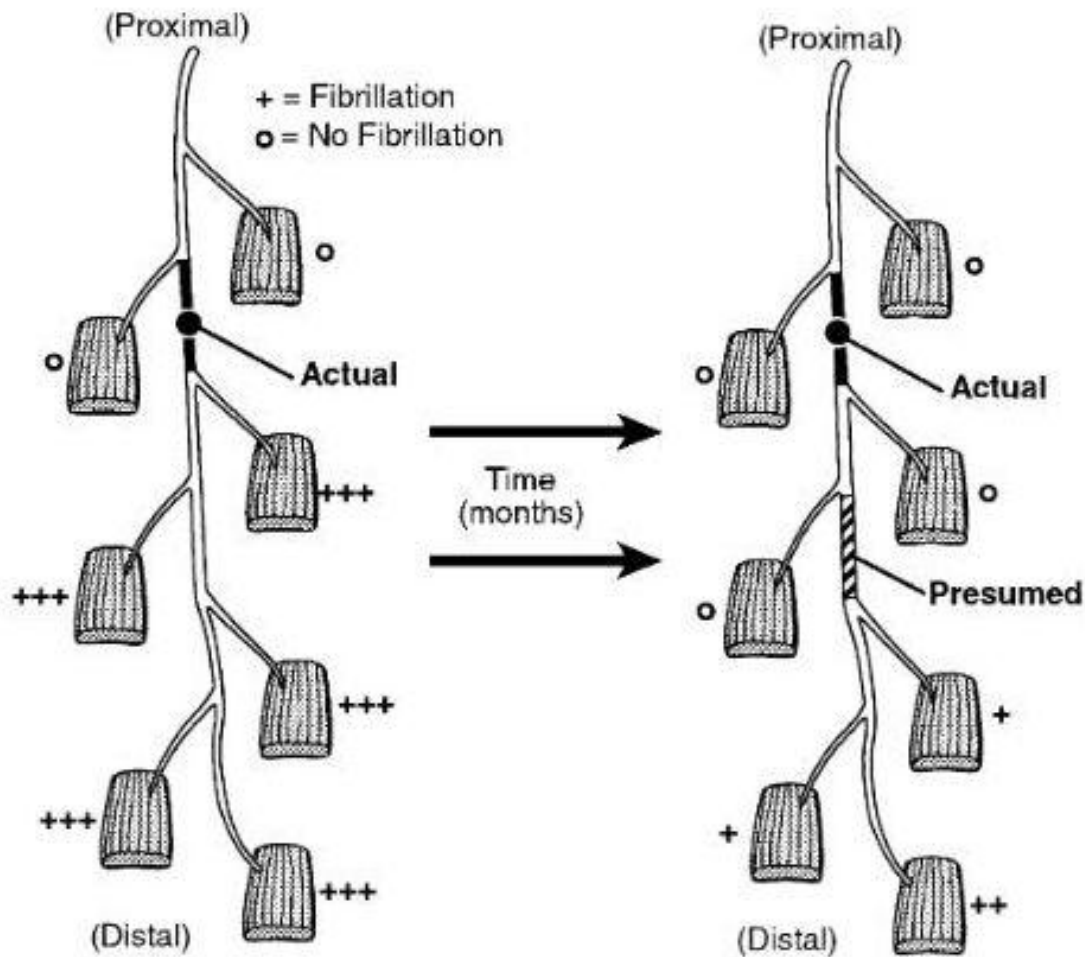


Fig. 15. The effect the duration of a static focal axon loss lesion often has on localization by needle electrode examination.