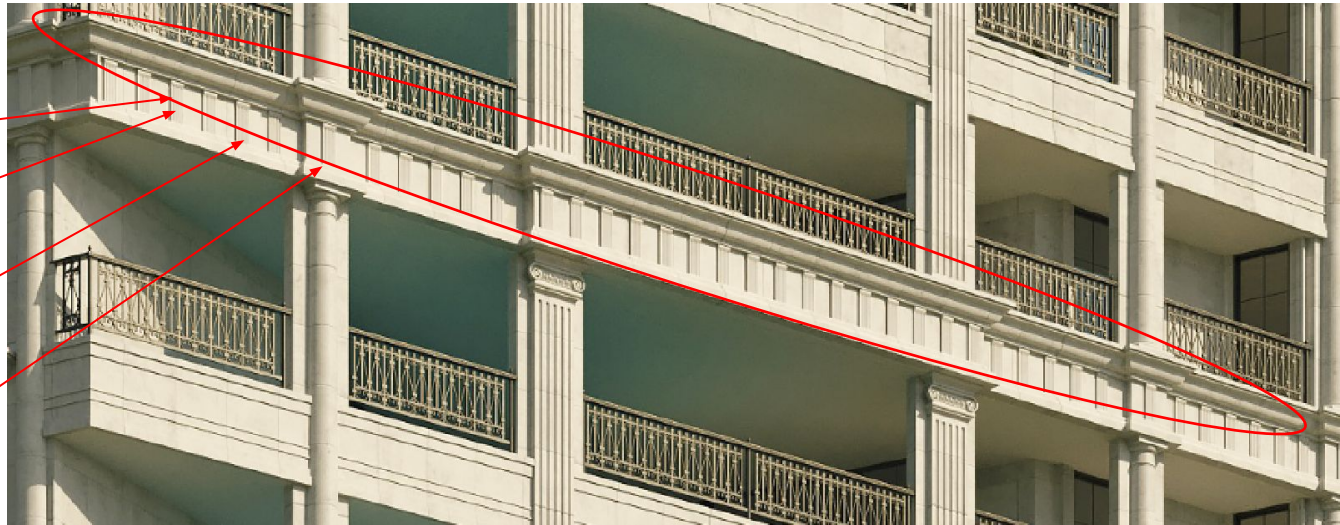
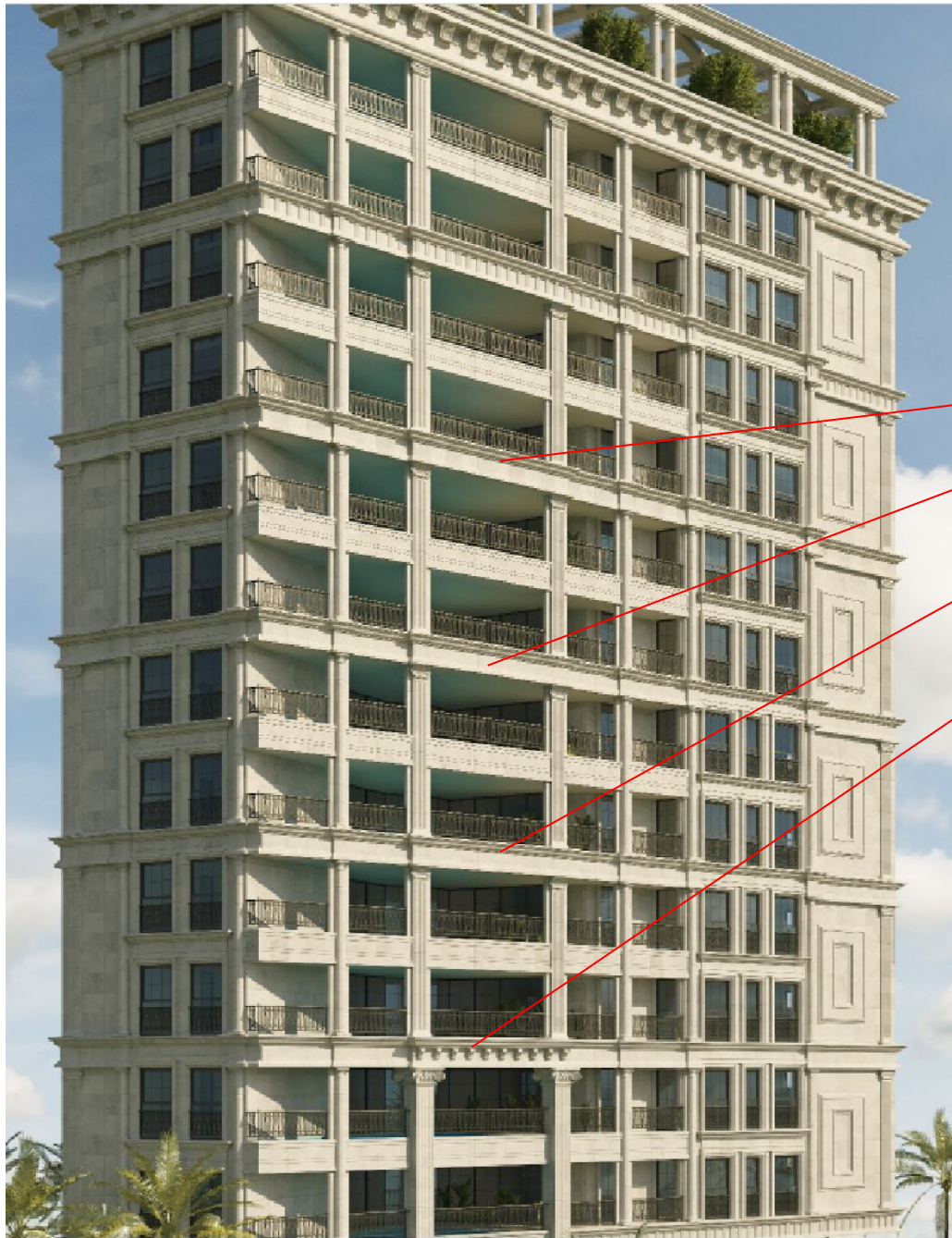
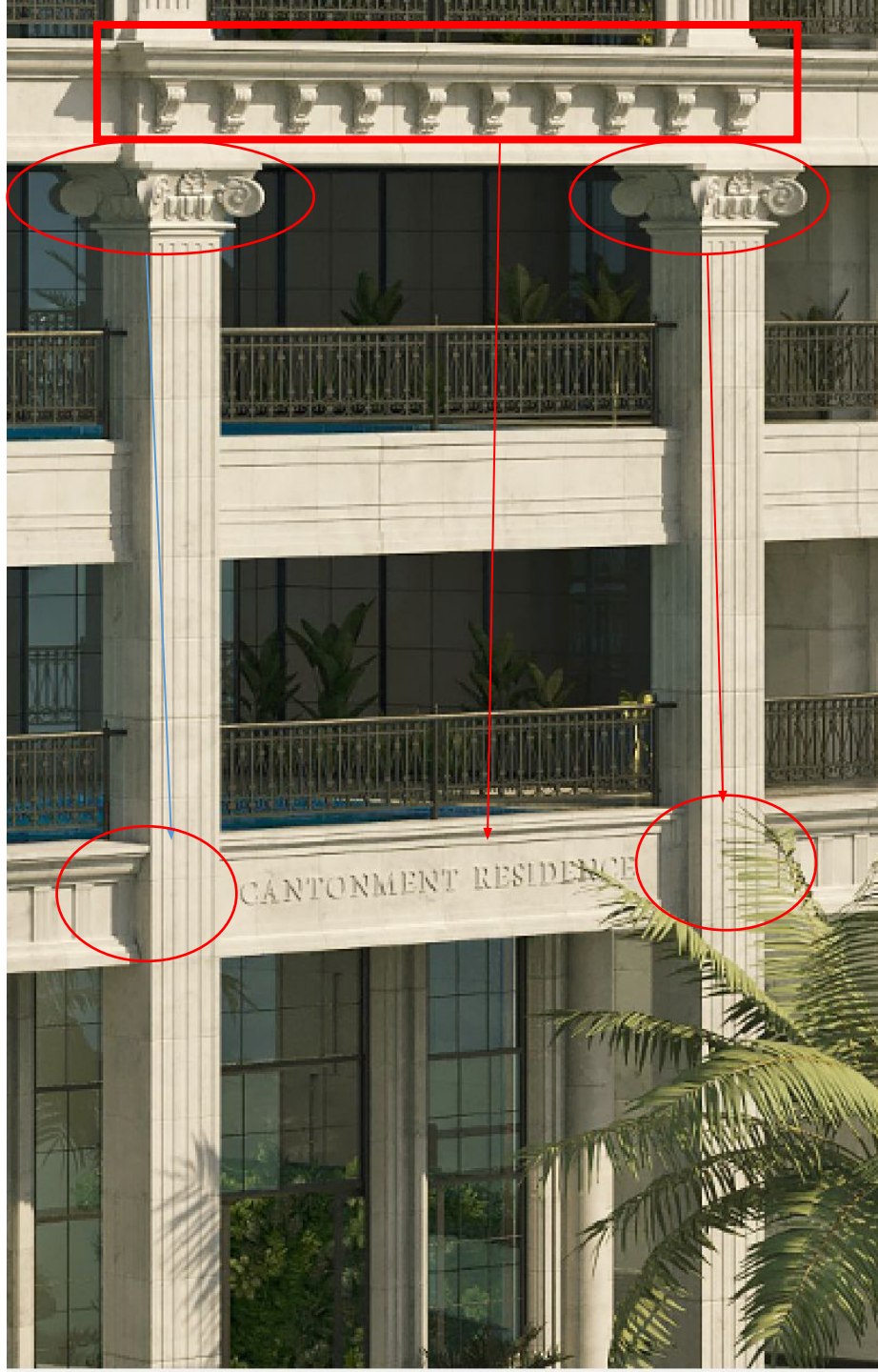




All the the pillars change to this type



Apply the cornice lines on these floors



CANTONMENT RESIDENCE

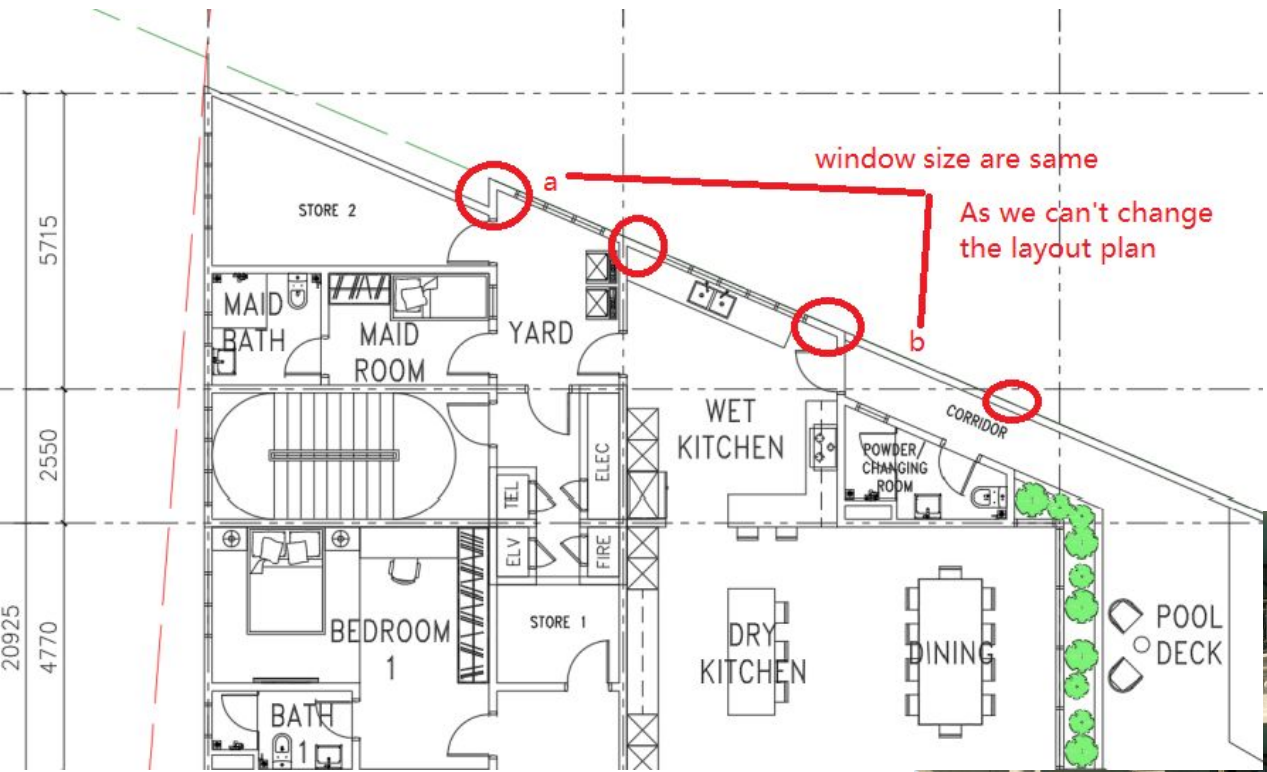


Thicken/wider the lobby ceiling /level





Add the same pillar, to balance it



To extend the window area

So the outcome would be something like this,
But please help to beautify





Could you please also help generate the evening effect (like the sample Photo) , with all the lightings (on pillars, rooftop etc)?

Also, could you provide us the drawings from the back angle, and from other angles?