



Victorian era
1837-1901

Victorian fashion: various fashions and trends in British culture in the United Kingdom and the British Empire from the 1830s through the 1890s.

Victorian women's fashion





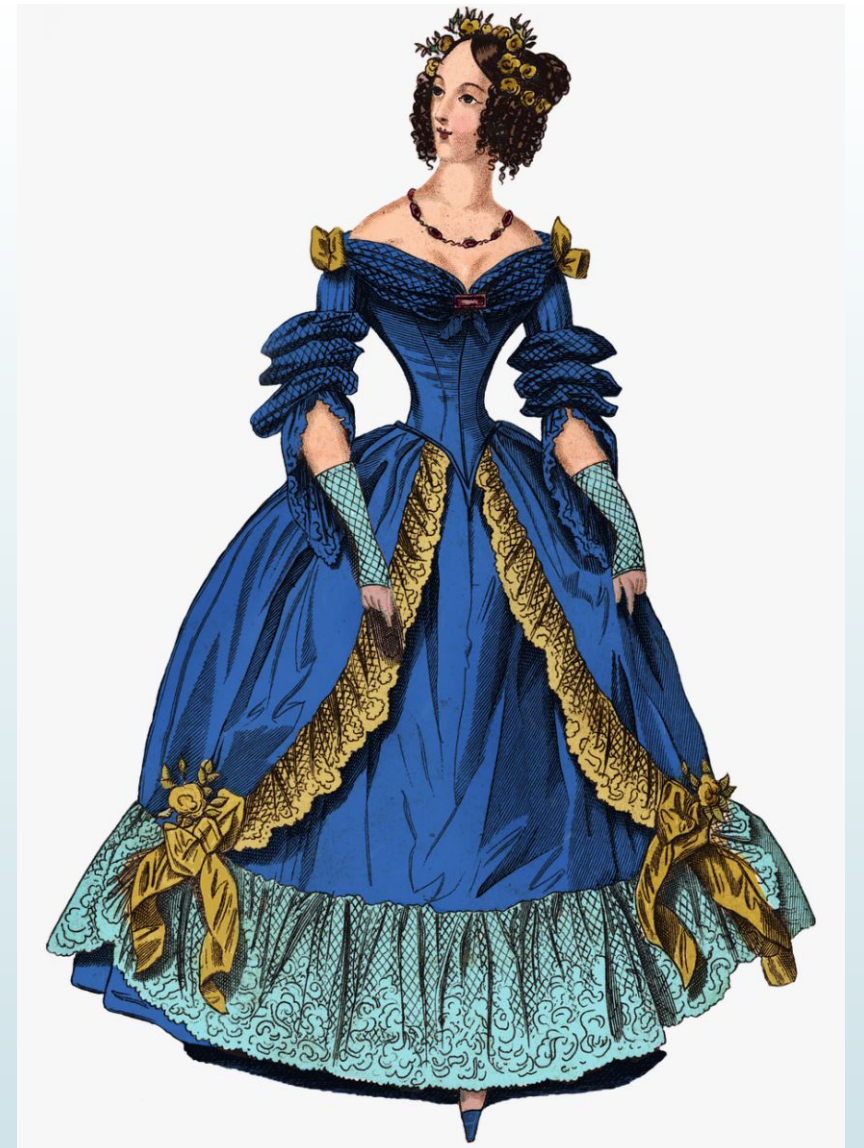
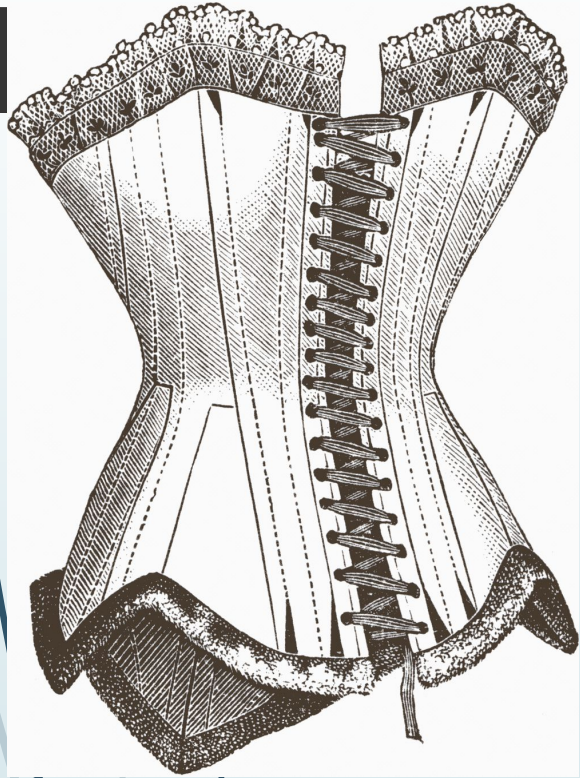
Upper-class women



Middle-class women

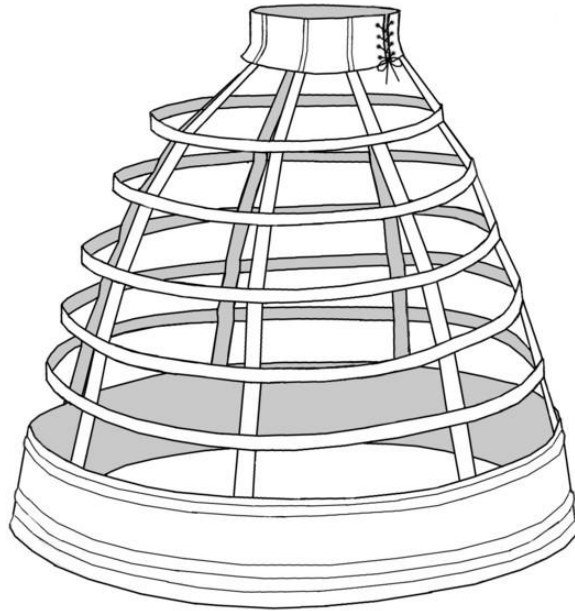
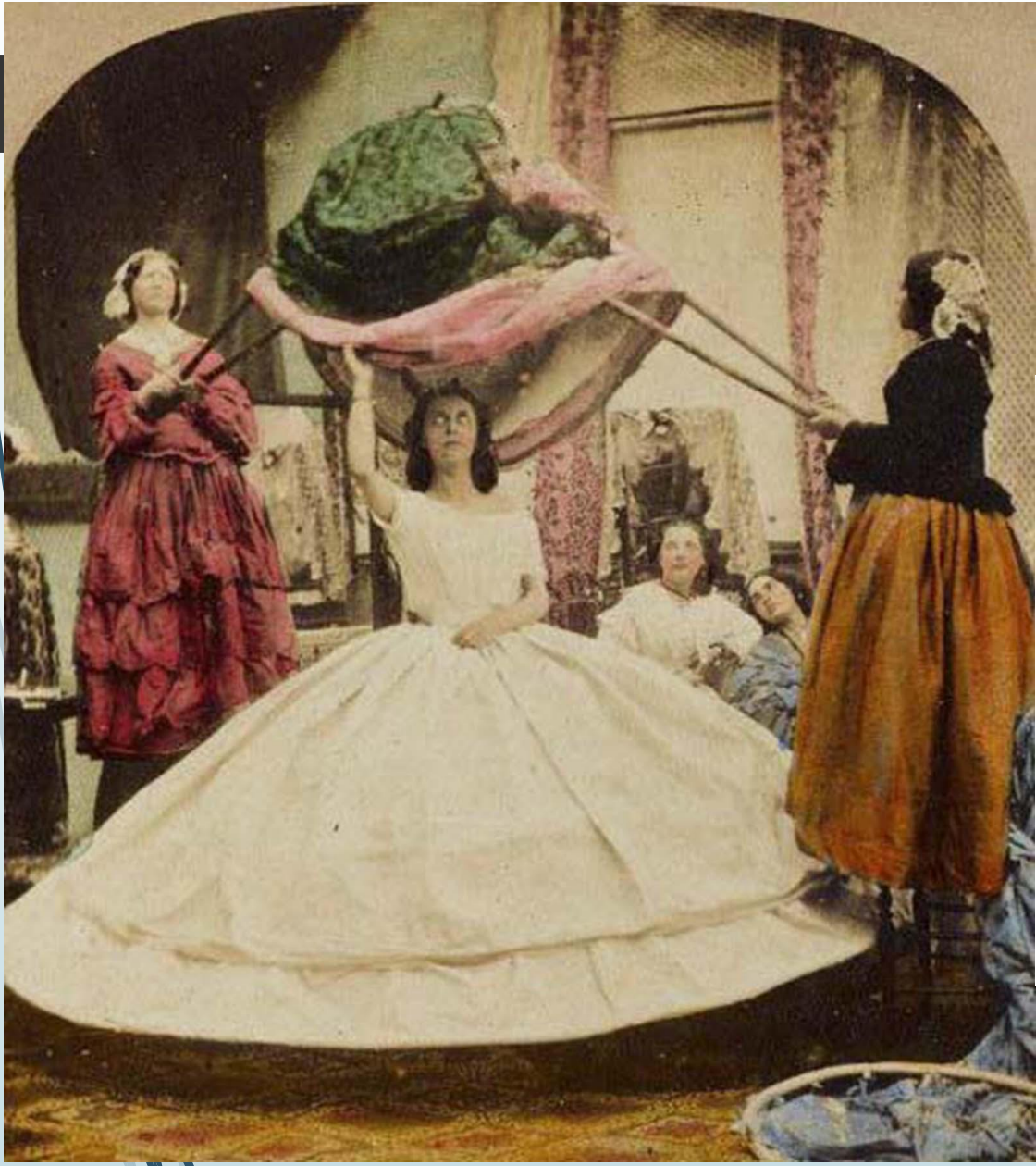


Bertha is the low shoulder neckline worn by women during the Victorian Era.



Corsets were used in women's gowns for emphasizing the small waist of the female body.

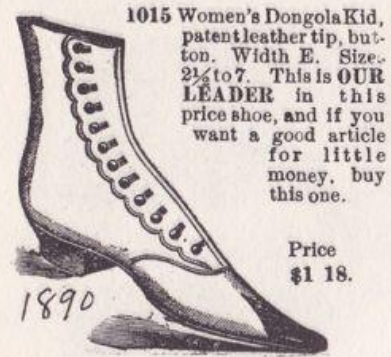




Hats



Shoes

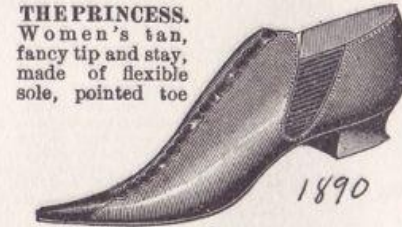


1015 Women's Dongola Kid, patent leather tip, button. Width E. Size 2½ to 7. This is **OUR LEADER** in this price shoe, and if you want a good article for little money, buy this one.

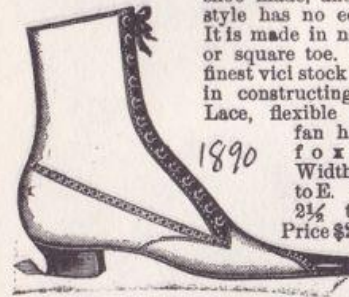
Price \$1 18.



1028 Women's tan Dongola Kid, square or pointed toe, fox heel Oxfords. French stay. Width E. Sizes 2½ to 7, special price \$1 25.



THE PRINCESS. Women's tan, fancy tip and stay, made of flexible sole, pointed toe



1022 This shoe is the best ladies' black and tan shoe made, and for style has no equal. It is made in needle or square toe. The finest vici stock used in constructing it. Lace, flexible sole, fox heel, **foxed.** Widths A to E. Sizes 2½ to 7. Price \$2 65



Ladies' Avon Shoe, \$1.98.

No. 30. Made of the best materials, fine Vici kid, with the California stay in both back and front seams. Six styles of lasts. Piccadilly toe, laced and buttoned; opera toe, buttoned; new common sense toe, laced and buttoned, — all with the patent tips; also common sense toe, plain. Actually equal to any shoe sold for \$2.50 or 3.



Nos. 1038 and 1039. (Order by number.) only. One of this season's novelties. Very dressy. Widths D and E. Sizes 2½ to 6. Price \$1 98.

Misses' and children's Kangaroos, French tip, opera toe, all solid, a fine medium weight school shoe. This is the best that can be made; neat and stylish. If you want the best buy this. Sizes from 8 to 2 comes with heel and spring heel; from 6 to 8 spring heel only. Sizes 6 to 8, \$1 15; 8½ to 12, \$1 50; 12½ to 2, \$1 75.



Ladies' Congress Boots.

Plain toe and heel.
 Sizes 3 to 8. Widths C, D, E. No half sizes.
 No. 194. Common Serge, 89c.
 No. 195. Serge, D and E, \$1.24.
 No. 196. 20-thread Serge, \$1.49.