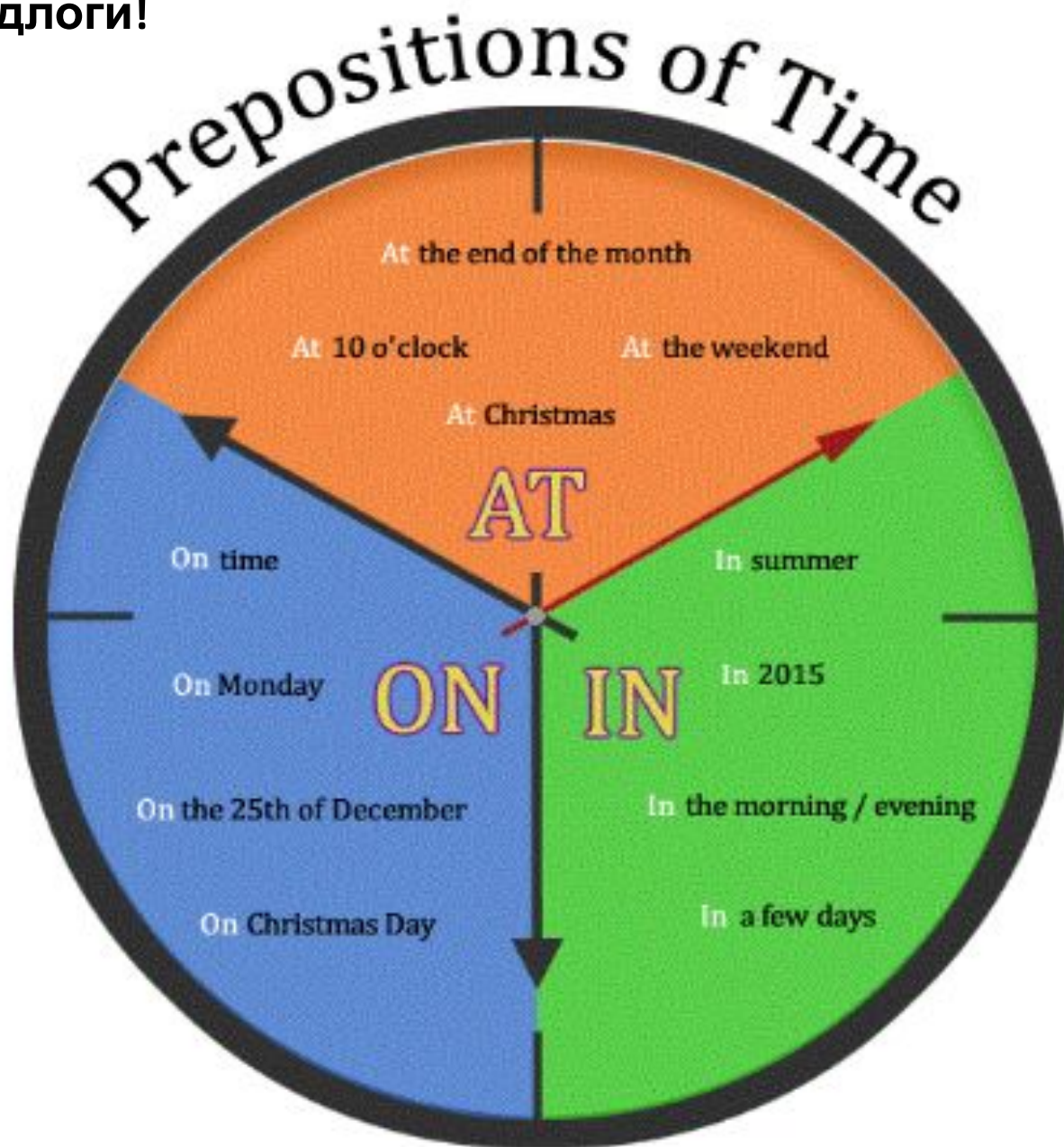


*Friday, the eleventh of February*



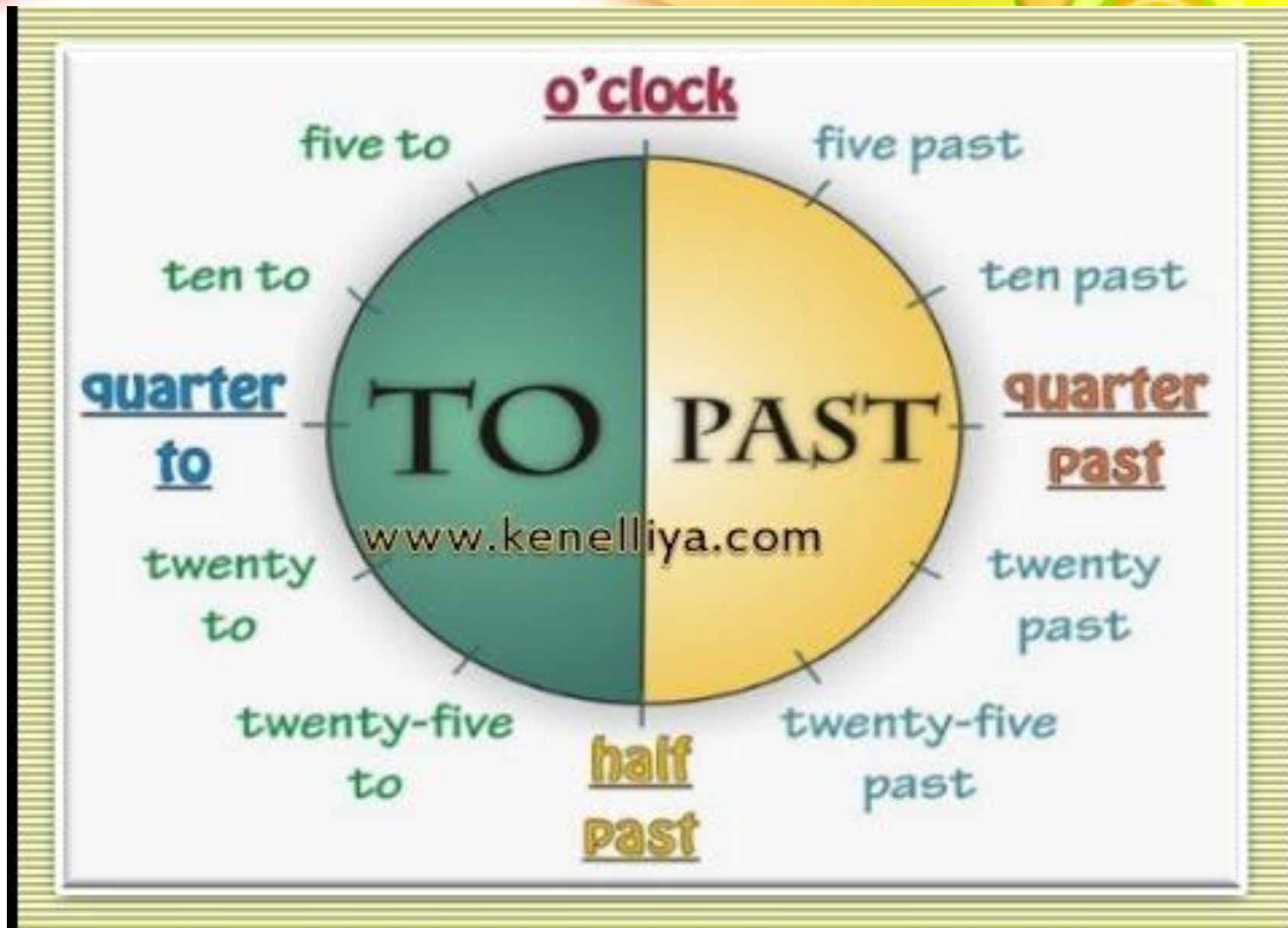
THE TIME

Повтори предлоги!



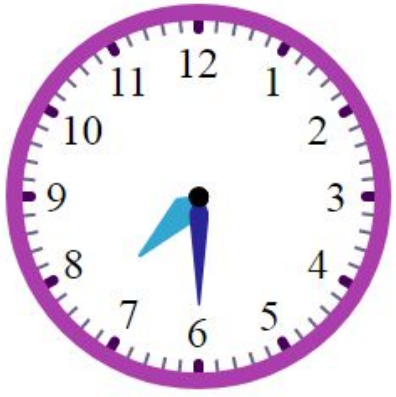
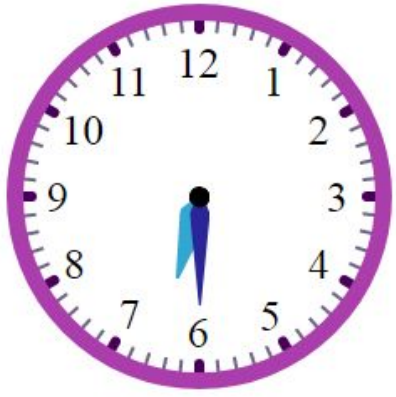
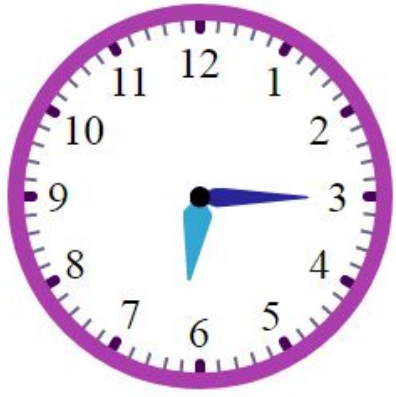
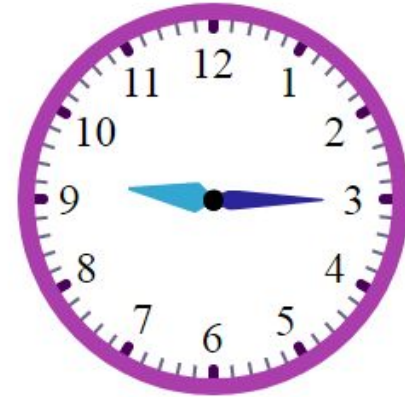
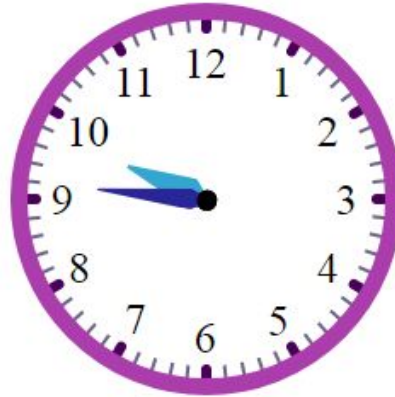
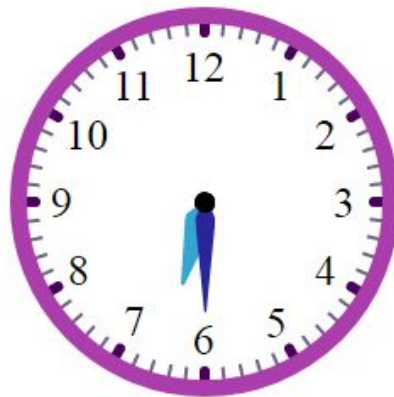
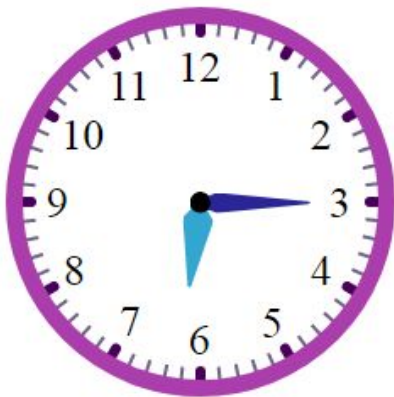
Повтори время по часам!

What time is it? What's the time?





What's the time?





1. [https://uchebnik.mos.ru/app\\_player/394562](https://uchebnik.mos.ru/app_player/394562)
2. [https://uchebnik.mos.ru/app\\_player/92739](https://uchebnik.mos.ru/app_player/92739)
3. [https://uchebnik.mos.ru/app\\_player/11487](https://uchebnik.mos.ru/app_player/11487)
4. [https://uchebnik.mos.ru/exam/test/training\\_spec/63367/task/1](https://uchebnik.mos.ru/exam/test/training_spec/63367/task/1)

5. Вставь предлог времени в предложение ( письменно/фото работы)

(по желанию)

**Insert the correct preposition of time (in/on/at).**

- ❖ \_\_\_\_ summer I play football \_\_\_\_ Sundays.
- ❖ The train leaves Moscow \_\_\_\_ 4 p.m.
- ❖ He likes playing tennis \_\_\_\_ weekends.
- ❖ My sister's birthday is \_\_\_\_ March.
- ❖ We often eat in a restaurant \_\_\_\_ Fridays.
- ❖ Noviy Urengoy is very cold \_\_\_\_ winter.