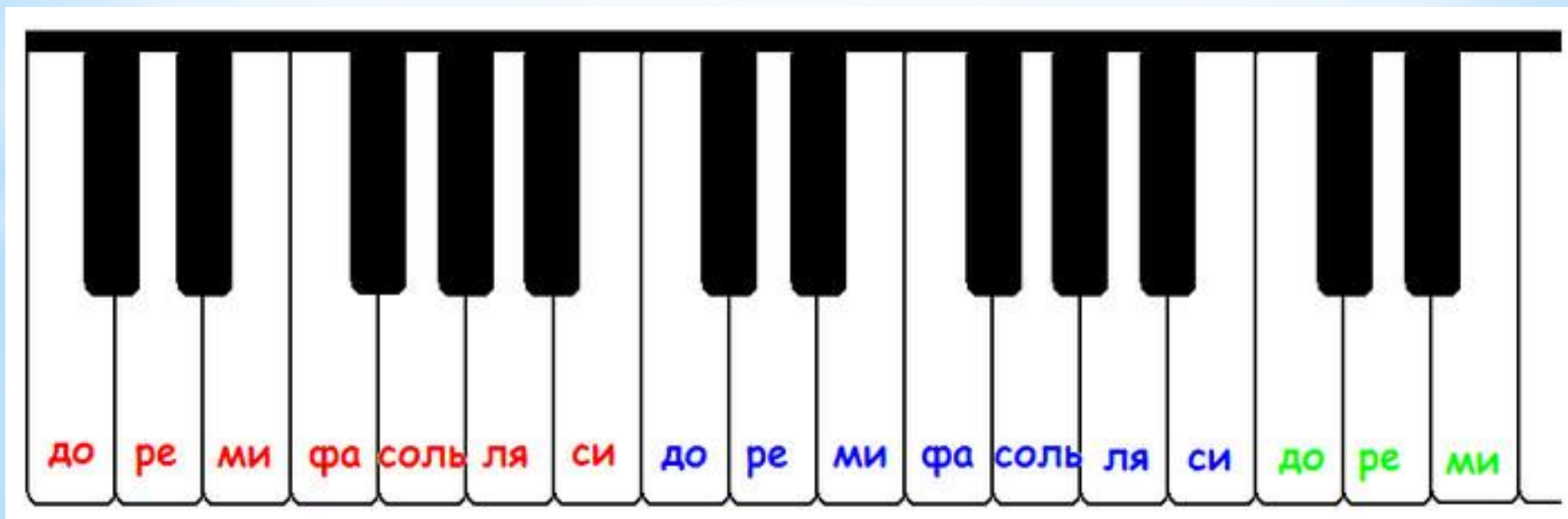


→ *диезы*

*фа до соль ре ля ми си*

*бемоли* ←



# Определите знаки в тональности:

A - dur

C - dur

D - dur

E - dur

F - dur

B - dur

Es - dur

Des - dur

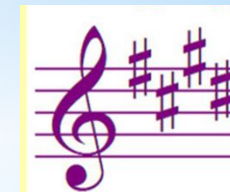
G - dur

H - dur

As - dur



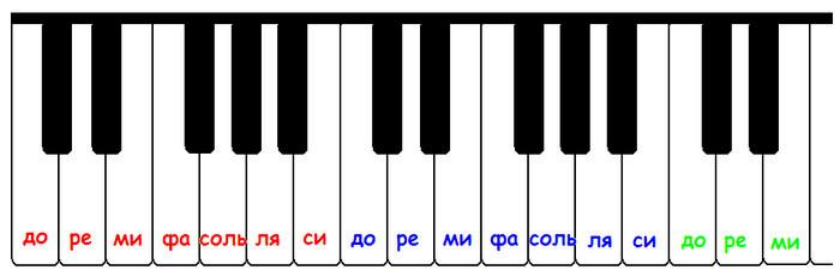
Нет  
знаков





**T53    T6    T64    S53    S6    S64    D6**

**$B^5_3 = 6.3 + m.3$**   
 **$B_6 = m.3 + 4.4$**   
 **$B^6_4 = 4.4 + 6.3$**



	<b>T</b>	<b>S</b>	<b>D</b>
<b>I</b>	<b>T<sub>53</sub></b>	<b>S<sub>64</sub></b>	
<b>II</b>			<b>D<sub>64</sub></b>
<b>III</b>	<b>T<sub>6</sub></b>		
<b>IV</b>		<b>S<sub>53</sub></b>	
<b>V</b>	<b>T<sub>64</sub></b>		<b>D<sub>53</sub></b>
<b>VI</b>		<b>S<sub>6</sub></b>	
<b>VII</b>			<b>D<sub>6</sub></b>

B-dur

The image shows a treble clef staff with a key signature of two flats (B-flat and E-flat). The title 'B-dur' is written above the staff. Below the staff, seven chords are represented by groups of three notes, each with a label underneath:

- T53: Notes B2, D3, F#3
- T6: Notes B2, D3, F#3
- T64: Notes B2, D3, F#3
- S53: Notes B2, D3, F#3
- S6: Notes B2, D3, F#3
- S64: Notes B2, D3, F#3
- D6: Notes B2, D3, F#3